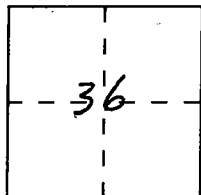


Document Number CR-97-45

City of _____

County of San Joaquin, California

Brief Legal Description State highway reference monument in Sec. 36, T.5N, R.8E, M.D.M.



CORNER TYPE

Government Corner ☐ Control ☒
Meander ☐ Property ☐
Rancho ☐ Other ☐
Date of Survey 10/23/97

Coordinates (Optional)

N. _____
E. _____
Zone 3 NAD: '27 X '83
NAD-83 Epoch _____
Elevation _____

Corner — Left as found ☒ Found and tagged ☐ Established ☐ Reestablished ☐ Rebuilt ☐

Identification and type of corner found: Evidence used to identify or procedure used to establish or reestablish the corner:

Found "DIVISION OF HIGHWAYS" Brass disk in concrete, flush, in the
shoulder of State Highway Route 88, according to the "As-built"
construction plan on file at the District 10 office of Caltrans
in Stockton. "As-built" #GE-2843

A description of the physical condition of the monument as found and as set or reset: Found in good
condition as described. Monument is in jeopardy of demolition,
when the intersection of Highway 88 with Liberty Road is
rebuilt.

SURVEYOR'S STATEMENT

This Corner Record was prepared by me or under my direction in conformance with
the Land Surveyors' Act on November 12, 19 97.

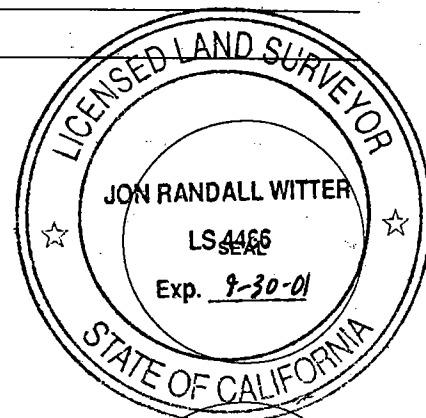
Signed [Signature] L.S. or ~~Reg.~~ Number 4466
For the State of California
Department of Transportation

COUNTY SURVEYOR'S STATEMENT

This Corner Record was received February 6, 19 98 and examined
and filed February 11, 19 98.

Signed Henry M. Hirata Title County Surveyor

County Surveyor's Comment _____



Section 36, T.5N., R.8E., M.D.M.,

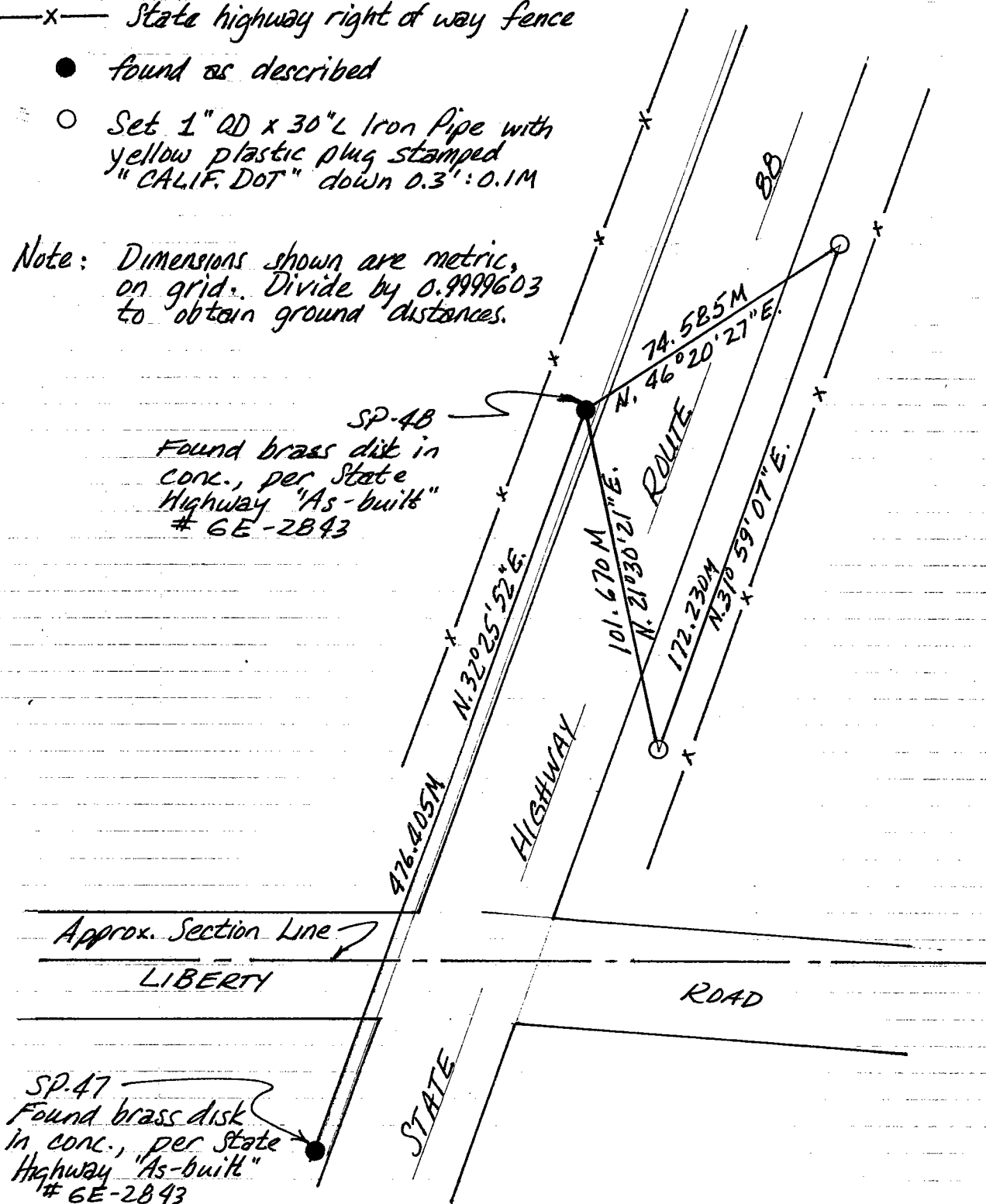
LEGEND

—x— State highway right of way fence

● found as described

○ Set 1" OD x 30" L Iron Pipe with yellow plastic plug stamped "CALIF. DOT" down 0.3' : 0.1M

Note: Dimensions shown are metric, on grid. Divide by 0.9999603 to obtain ground distances.



Sec. 1, T.4N., R.8E., M.D.M.