

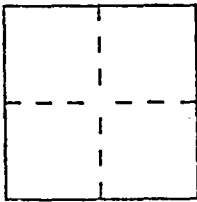
CORNER RECORD

Document Number CR-97-39

City of \_\_\_\_\_

County of SAN JOAQUIN, California

Brief Legal Description South Line lot 4, E. Line Lots 2 & 4 - JOHNSONS GARDEN FARMS, M & P 9-72, SEC. 59, C.M. WEBER GRANT



CORNER TYPE

COORDINATES (Optional)

Government Corner  Control   
Meander  Property   
Rancho  Other   
Date of Survey 6-13-97

N. \_\_\_\_\_  
E. \_\_\_\_\_  
Zone \_\_\_\_\_ Datum \_\_\_\_\_  
Elev. \_\_\_\_\_

Corner -- Left as found  Found and tagged  Established  Reestablished  Rebuilt

Identification and type of corner found: Evidence used to identify or procedure used to establish or reestablish the corner: see sketch on back

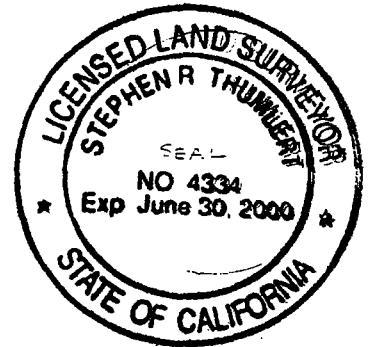
A description of the physical condition of the monument as found and as set or reset: \_\_\_\_\_

See sketch on back

SURVEYOR'S STATEMENT

This Corner Record was prepared by me or under my direction in conformance with the Land Surveyors' Act on July 2, 19 97.

Signed Stephen R. Drumlet L.S. or ~~P.C.E.~~ Number 4334



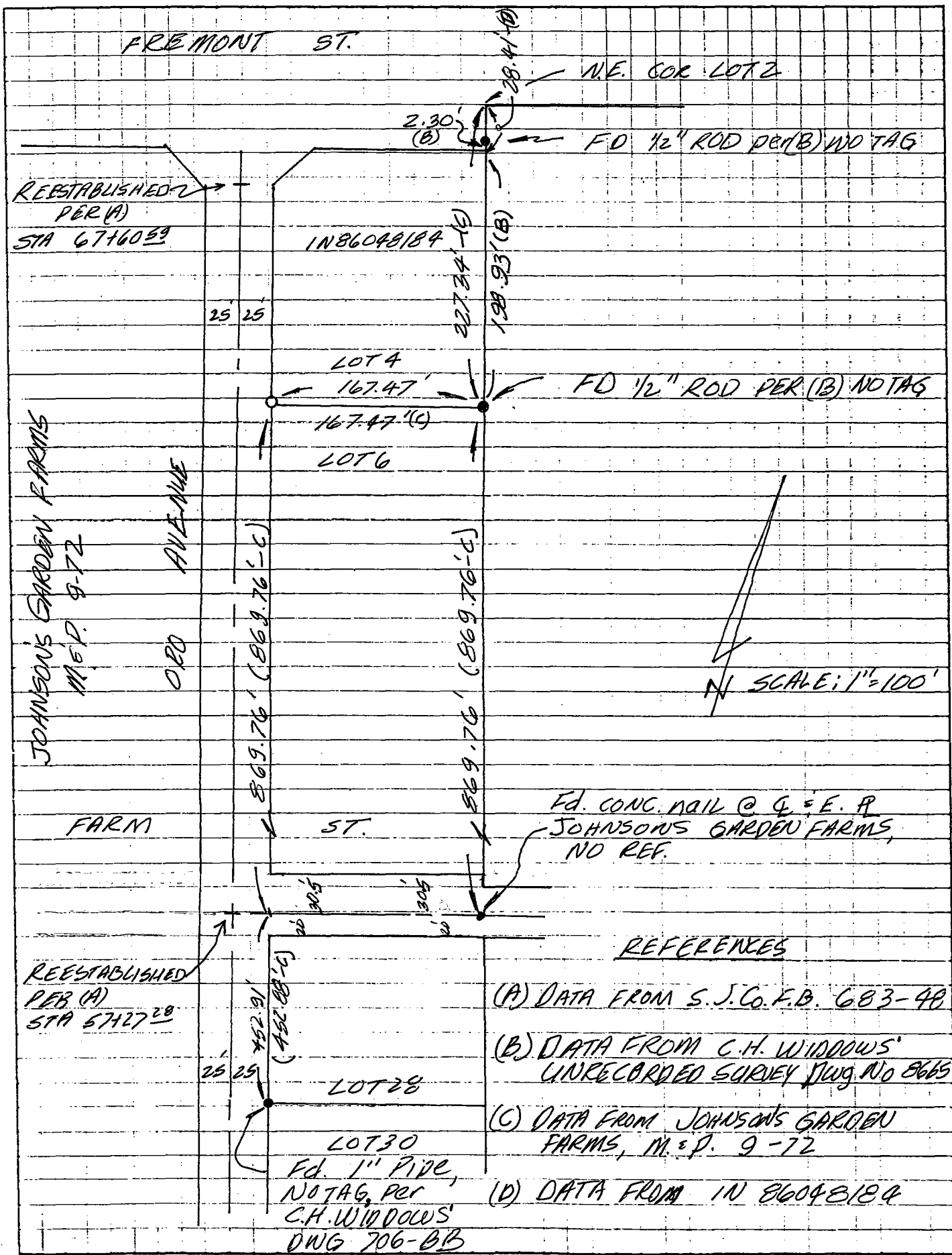
COUNTY SURVEYOR'S STATEMENT

This Corner Record was received January 8, 19 98 and examined and filed January 13, 19 98.

Signed Henry M. Hirata Title County Surveyor



County Surveyor's Comment \_\_\_\_\_



**REFERENCES**

- (A) DATA FROM S. J. CO. F.B. 683-48
- (B) DATA FROM C.H. WINDOWS' UNRECORDED SURVEY DWG. NO 8665
- (C) DATA FROM JOHNSON'S GARDEN FARMS, M.E.P. 9-72
- (D) DATA FROM IN 86048184