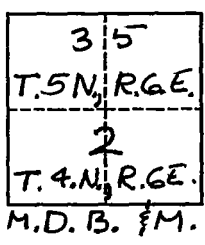


CORNER RECORD

Document Number CR-97-32
County of San Joaquin, California

City of _____
Brief Legal Description N.E. Corner of N.W. 1/4 of Sec. 2, T.4.N., R.G.E., M.D.B. & M.



CORNER TYPE

COORDINATES
(Optional)

Government Corner Control
Meander Property
Rancho Other
Date of Survey 12-19-96

N. _____
E. _____
Zone _____ Datum _____
Elev. _____

Corner - Left as found Found and tagged Established Reestablished Rebuilt

Identification and type of corner found: Evidence used to identify or procedure used to establish or reestablish the corner: Reestablished Corner from swing ties per Corner Record 95-005 (2-14-95.)

A description of the physical condition of the monument as found and as set or reset: Set P.K. & Shiner In New Road Surface.

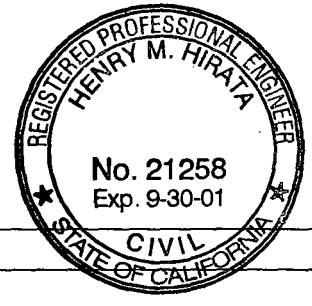
SURVEYOR'S STATEMENT

This Corner Record was prepared by me or under my direction in conformance with the Land Surveyors Act on 18 Dec, 19 97.
Signed [Signature] L.S. or R.C.E. Number 25341

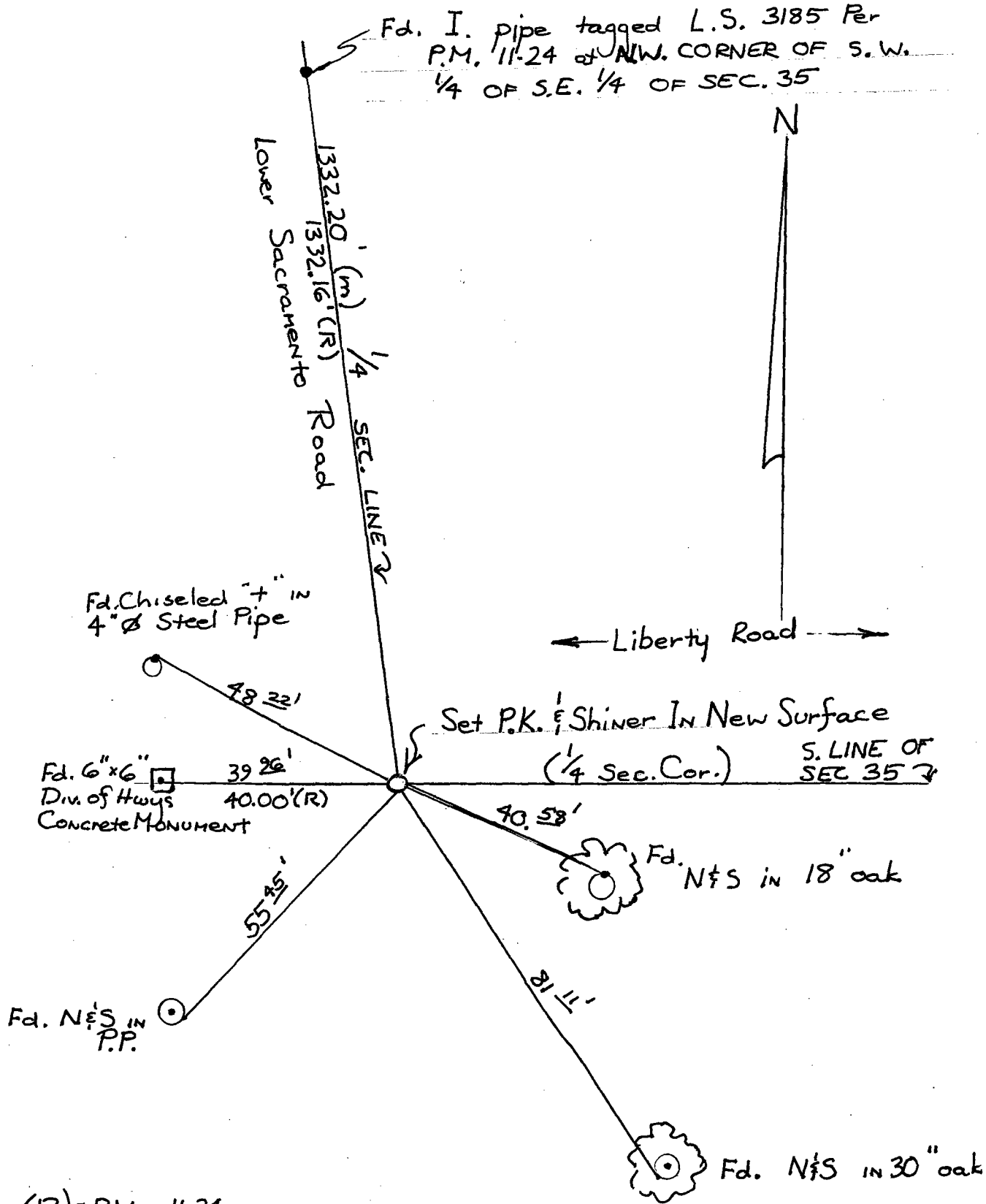


COUNTY SURVEYOR'S STATEMENT

This Corner Record was received December 18, 19 97 and examined and filed January 2, 19 98.
Signed Henry M. Hirata COUNTY SURVEYOR



County Surveyor's Comment _____



(R) = P.M. 11-24