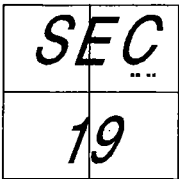


CITY OF RIPON

COUNTY OF SAN JOAQUIN

CALIFORNIA

BRIEF LEGAL DESCRIPTION: LOTS 51 - 57 OF "BOESCH-KINGERY ESTATES", M & P 32' - 78, BEING A PORTION OF SECTION 19, T.2 S., R.8 E., M.D.B. & M.



CORNER TYPE

GOV'T CORNER CONTROL
MEANDER PROPERTY
RANCHO OTHER
DATE OF SURVEY: SEPTEMBER 20, 1997.

COORDINATES

(OPTIONAL)

N. _____
E. _____
ZONE _____ DATUM _____
ELEVATION _____

CORNER - LEFT AS FOUND FOUND AND TAGGED ESTABLISHED REESTABLISHED REBUILT

IDENTIFICATION AND TYPE OF CORNER FOUND: EVIDENCE USED TO IDENTIFY OR PROCEDURE USED TO ESTABLISH OR REESTABLISH CORNER:

FOUND 1/2" IRON PIPES AT THE FRONT CORNERS OF LOTS 51 THROUGH 57 AND THE REAR CORNERS OF LOTS 51, 55, AND 56 (SEE SKETCH ON SHEET 2) ALL OF "BOESCH - KINGERY ESTATES" AS FILED IN BOOK 32 OF MAPS AND PLATS, PAGE 78, SAN JOAQUIN COUNTY RECORDS.

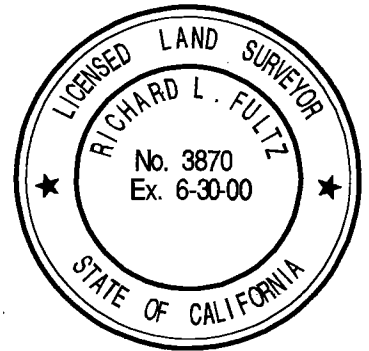
A DESCRIPTION OF THE PHYSICAL CONDITION OF THE MONUMENT AS FOUND AND AS SET OR RESET:

MONUMENTS FOUND IN GOOD CONDITION. SET 1/2" IRON PIPE, 30" LONG TAGGED "LS 3870" AS WITNESS CORNERS LOCATED 5.00' FROM TRUE LOCATION, MEASURED ALONG LOT LINE, TO REPLACE MONUMENTS DESTROYED DURING CONSTRUCTION OF UTILITY BOXES.

SURVEYOR'S STATEMENT

THIS CORNER RECORD WAS PREPARED BY ME OR UNDER MY DIRECTION IN CONFORMANCE WITH THE LAND SURVEYORS' ACT ON Dec. 16, 1997.

SIGNED Richard L. Fultz RICHARD L. FULTZ L.S. NUMBER 3870 (EXPIRES 6-30-00)



COUNTY SURVEYOR'S STATEMENT

THIS CORNER RECORD WAS RECEIVED December 17, 1997 AND EXAMINED AND FILED DECEMBER 29, 1997.

SIGNED Henry M. Hirata TITLE COUNTY SURVEYOR

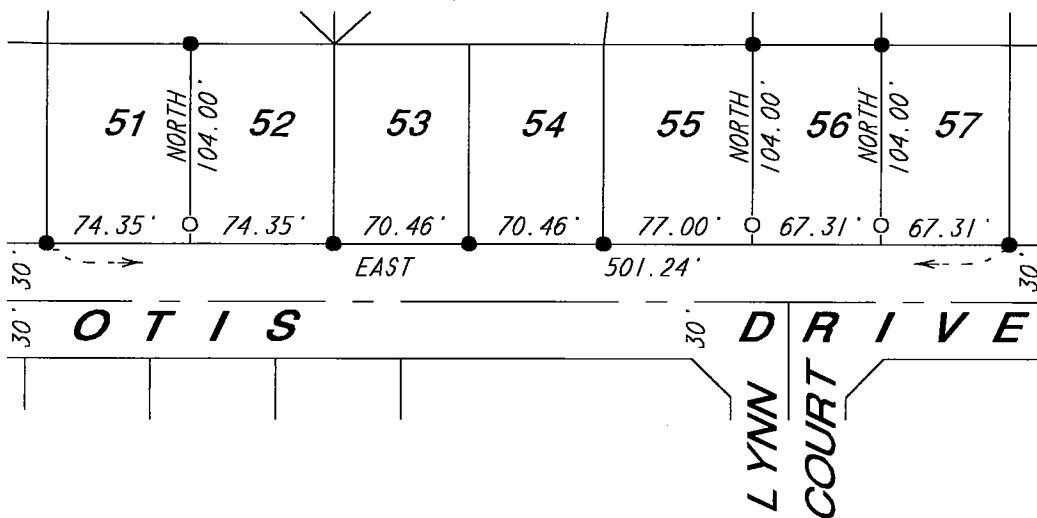


COUNTY SURVEYOR'S COMMENTS

LOTS 51 - 57 OF "BOESCH - KINGERY ESTATES"

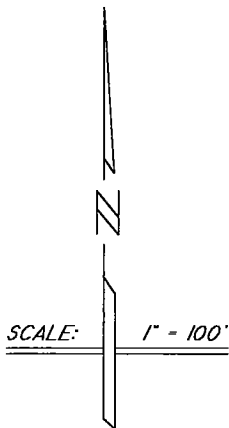
LOCATED IN SECTION 19, T.2 S., R.8 E., M.D.B. & M.
CITY OF RIPON, COUNTY OF SAN JOAQUIN, CALIFORNIA.

NOTE: ALL BEARINGS AND DISTANCES OF PERTINENT LINES SHOWN ON THE SURVEY
ARE THE SAME AS "BOESCH - KINGERY ESTATES" AS FILED IN BOOK 32 OF MAPS AND
PLATS, PAGE 78, SAN JOAQUIN COUNTY RECORDS.



LEGEND:

- FOUND 1/2" IRON PIPE TAGGED "LS 3870"
- SET 1/2" IRON PIPE 30" LONG, TAGGED "LS 3870" AS A WITNESS CORNER, 5.00' FROM TRUE POSITION, MEASURED ALONG LOT LINE.



9232GR.VGD

DOC. NO. **CR-97-31**

SHEET 2 OF 2