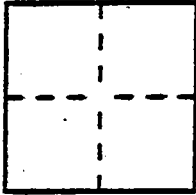


CORNER RECORD

Document No. CR-97-26
County of SAN JOAQUIN, California

City of STOCKTON

Brief Legal Description BLOCK 111 OF "SOUTH OF MORNON CHANNEL" IN THE CITY OF STOCKTON ACCORDING TO THE MAP OR PLAT THEREOF



CORNER TYPE

Government Corner Control
Meander Property
Rancho Other
Date of Survey 8-14-97

COORDINATES (Optional)

N. _____
E. _____
Zone _____ Datum _____
Elev. _____

Corner — Left as found Found and tagged Established Reestablished Rebuilt

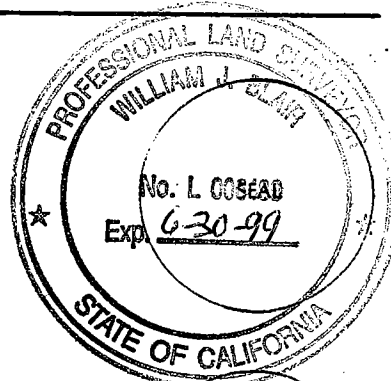
Identification and type of corner found: Evidence used to identify or procedure used to establish or reestablish the corner:
FOUND AS DESCRIBED ON REVERSE OF THIS SHEET. POINTS TIED OUT 8-14-97 PRIOR TO CONSTRUCTION EFFORT BY STATE OF CALIFORNIA.

A description of the physical condition of the monument as found and as set or reset: THESE TIES ARE FOR THE PURPOSE OF PERPETUATING THE FOUND MONUMENTATION. NO CLAIM IS MADE AS TO THE RELATIONSHIP OF THE POINTS OR LINES SHOWN HEREON TO TRUE BOUNDARY LOCATIONS.

SURVEYOR'S STATEMENT

This Corner Record was prepared by me or under my direction in conformance with the Land Surveyors' Act on 8-14-1997.

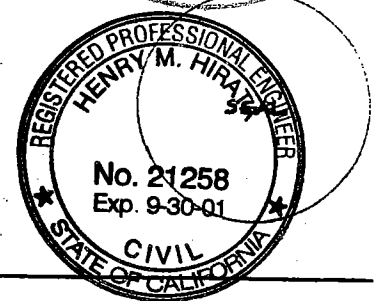
Signed W. J. Blaw L.S. or R.E. Number 6487



COUNTY SURVEYOR'S STATEMENT

This Corner Record was received November 14, 19 97 and examined and filed DECEMBER 17, 19 97.

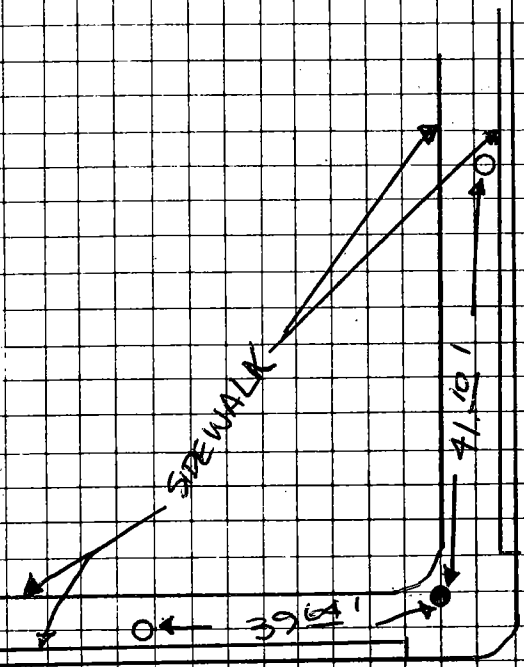
Signed Henry M. Hirata, Title County Surveyor



County Surveyor's Comment _____

● = FOUND CHISELED "T" IN SIDEWALK

○ = SET PK NAIL TAGGED WITH BRASS "CALTRANS" WASHER



↖ CHARTER WAY