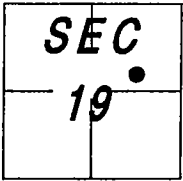


CORNER RECORD

DOCUMENT NUMBER CR-97-23

CITY OF RIPON COUNTY OF SAN JOAQUIN, CALIFORNIA
BRIEF LEGAL DESCRIPTION: LOTS IN "BOESCH-KINGERY ESTATES", M & P 32 - 78, BEING A PORTION OF THE N.E. 1/4 OF SECTION 19, T.2 S., R.8 E., M.D.B. & M.



CORNER TYPE

GOV'T CORNER CONTROL
MEANDER PROPERTY
RANCHO OTHER
DATE OF SURVEY: JULY 8, 1996

COORDINATES (OPTIONAL)

N. _____
E. _____
ZONE _____ DATUM _____
ELEVATION _____

CORNER - LEFT AS FOUND FOUND AND TAGGED ESTABLISHED REESTABLISHED REBUILT

IDENTIFICATION AND TYPE OF CORNER FOUND: EVIDENCE USED TO IDENTIFY OR PROCEDURE USED TO ESTABLISH OR REESTABLISH CORNER:

FOUND 1/2" IRON PIPES TAGGED LS 3870, AT THE FRONT AND REAR CORNERS OF LOTS 37 THROUGH 45 AND LOTS 32 THROUGH 35 (SEE SKETCH ON SHEET 2) ALL OF BOESCH-KINGERY ESTATES AS FILED IN BOOK 32 OF MAPS AND PLATS, PAGE 78, SAN JOAQUIN COUNTY RECORDS.

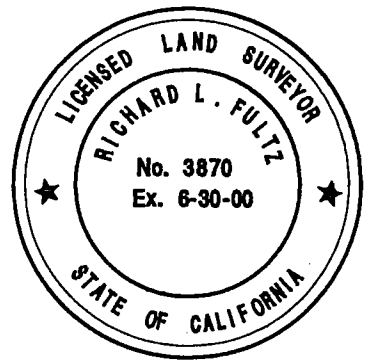
A DESCRIPTION OF THE PHYSICAL CONDITION OF THE MONUMENT AS FOUND AND AS SET OR RESET:

MONUMENTS FOUND IN GOOD CONDITION. SET 1/2" IRON PIPES, 30" LONG, TAGGED LS 3870, AS A WITNESS CORNER, 5.00' FROM TRUE CORNER LOCATION MEASURED ALONG LOT LINE. SET NAIL AND TAG (LS 3870) IN FOUNDATION OF MASONRY WALL FOR THE SOUTHWEST CORNER OF LOT 45. (SEE SKETCH ON SHEET 2)

SURVEYOR'S STATEMENT

THIS CORNER RECORD WAS PREPARED BY ME OR UNDER MY DIRECTION IN CONFORMANCE WITH THE LAND SURVEYORS' ACT ON Dec. 1, 19 97.

SIGNED Richard L. Fultz L.S. NUMBER 3870
RICHARD L. FULTZ (EXPIRES 6-30-00)



COUNTY SURVEYOR'S STATEMENT

THIS CORNER RECORD WAS RECEIVED December 2, 19 97 AND EXAMINED AND FILED DECEMBER 17, 19 97

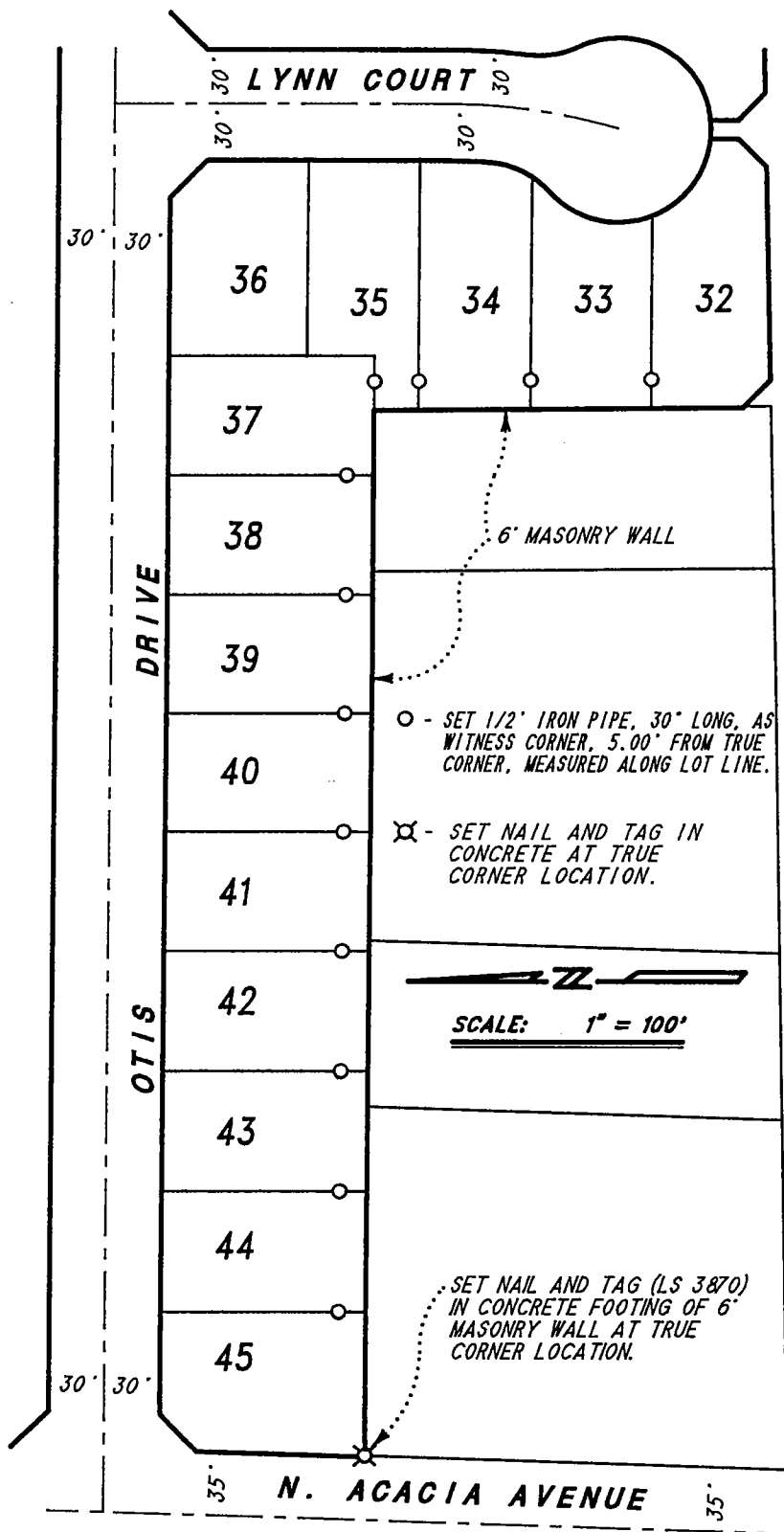
SIGNED Henry M. Hirata TITLE COUNTY SURVEYOR



COUNTY SURVEYOR'S COMMENTS

CORNER RECORD

A PORTION OF
 THE NORTHEAST QUARTER OF SECTION 19,
 T. 2 S., R. 8 E., M.D.B. & M.
 CITY OF RIPON, SAN JOAQUIN COUNTY.



NOTE:
 ALL BEARINGS AND DISTANCES
 OF PERTINENT LINES SHOWN
 ON THIS SURVEY ARE THE
 SAME AS "BOESCH-KINGERY
 ESTATES" AS FILED IN
 BOOK 32 OF MAPS AND PLATS,
 PAGE 78, SAN JOAQUIN
 COUNTY RECORDS.

- - SET 1/2" IRON PIPE, 30" LONG, AS WITNESS CORNER, 5.00' FROM TRUE CORNER, MEASURED ALONG LOT LINE.
- ⊗ - SET NAIL AND TAG IN CONCRETE AT TRUE CORNER LOCATION.

SCALE: 1" = 100'

SET NAIL AND TAG (LS 3870) IN CONCRETE FOOTING OF 6" MASONRY WALL AT TRUE CORNER LOCATION.