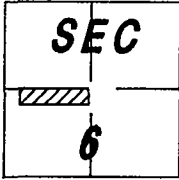


CORNER RECORD

DOCUMENT NUMBER CR-97-22

CITY OF MANTECA COUNTY OF SAN JOAQUIN, CALIFORNIA
BRIEF LEGAL DESCRIPTION: LOTS IN "ROBERTS ESTATES", M & P 32 - 49, SAN JOAQUIN COUNTY RECORDS, BEING A PORTION OF THE SOUTHWEST QUARTER OF SECTION 6, T.2 S., R.7 E., M.D.B. & M.



CORNER TYPE

GOV'T CORNER CONTROL
MEANDER PROPERTY
RANCHO OTHER
DATE OF SURVEY: FEBRUARY 22, 1996

COORDINATES (OPTIONAL)

N. _____
E. _____
ZONE _____ DATUM _____
ELEVATION _____

CORNER - LEFT AS FOUND FOUND AND TAGGED ESTABLISHED REESTABLISHED REBUILT

IDENTIFICATION AND TYPE OF CORNER FOUND: EVIDENCE USED TO IDENTIFY OR PROCEDURE USED TO ESTABLISH OR REESTABLISH CORNER:
FOUND 1/2" IRON PIPES, TAGGED LS 3870, AT THE FRONT AND REAR LOT CORNERS OF LOTS 14 THROUGH 24, 88 THROUGH 95 AND 97, UNLESS OTHERWISE NOTED.

A DESCRIPTION OF THE PHYSICAL CONDITION OF THE MONUMENT AS FOUND AND AS SET OR RESET:
MONUMENTS WERE FOUND IN GOOD CONDITION.

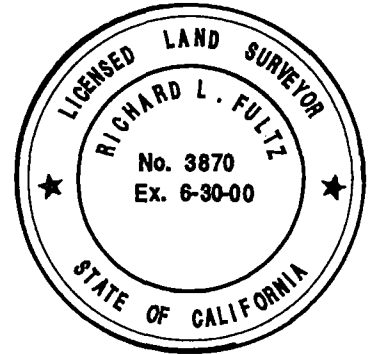
SET 1/2" IRON PIPES, 30" LONG, TAGGED LS 3870, AS A WITNESS CORNER 5', MEASURED ALONG LOT LINE, FROM TRUE CORNER FOR THE ABOVE NOTED LOTS, SEE SKETCH ON SHEET 2.

SET NAIL AND TAG (LS 3870) IN RETAINING WALL FOUNDATION AT TRUE CORNER LOCATIONS FOR LOTS 1, 50 THROUGH 55, 62 THROUGH 65, AND 72 THROUGH 77. SET NAIL AND TAG (LS 3870) IN RETAINING WALL FOUNDATION AS A WITNESS CORNER 5', MEASURED ALONG LOT LINE, FROM TRUE CORNER COMMON TO LOTS 1 AND 2, SEE SKETCH ON SHEET 2.

SURVEYOR'S STATEMENT

THIS CORNER RECORD WAS PREPARED BY ME OR UNDER MY DIRECTION IN CONFORMANCE WITH THE LAND SURVEYORS' ACT ON Dec. 1, 1997.

SIGNED Richard L. Fultz L.S. NUMBER 3870
RICHARD L. FULTZ (EXPIRES 6-30-00)



COUNTY SURVEYOR'S STATEMENT

THIS CORNER RECORD WAS RECEIVED December 2, 1997 AND EXAMINED AND FILED DECEMBER 17, 1997.

SIGNED Henry M. Hirata TITLE COUNTY SURVEYOR



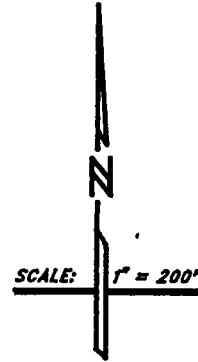
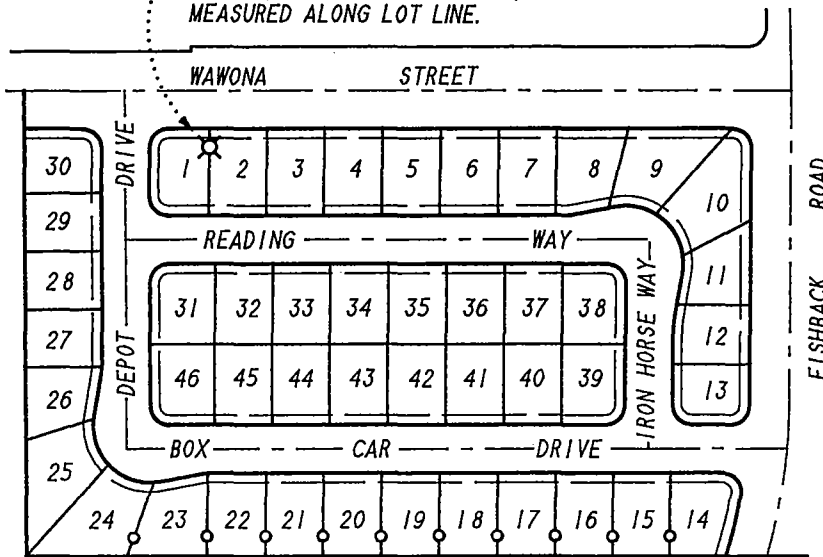
COUNTY SURVEYOR'S COMMENTS

CORNER RECORD

**A PORTION OF
"ROBERTS ESTATES"**

- - SET 1/2" IRON PIPE, 30" LONG, TAGGED LS 3870 AS A WITNESS CORNER
5', MEASURED ALONG LOT LINE, FROM TRUE CORNER UNLESS OTHERWISE NOTED.
- ⊗ - SET NAIL AND TAG (LS 3870) AT TRUE CORNER LOCATION
UNLESS NOTED OTHERWISE.

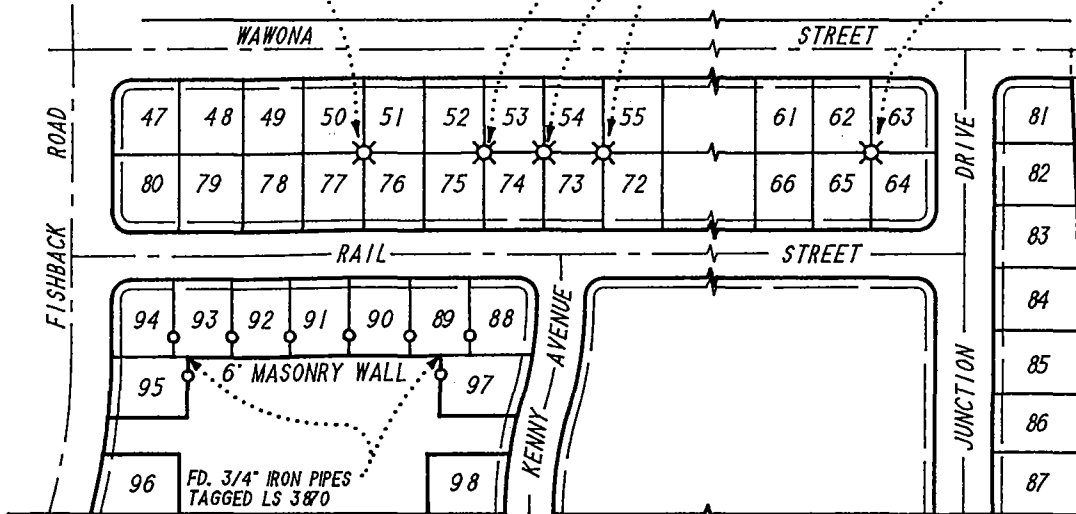
SET NAIL AND TAG (LS 3870) IN RETAINING
WALL FOUNDATION AS A WITNESS
CORNER, 5' FROM TRUE CORNER,
MEASURED ALONG LOT LINE.



NOTE:
MONUMENTS FOUND, AND BEARINGS
AND DISTANCES OF PERTINENT LINES
MEASURED ON THIS SURVEY
ARE THE SAME AS SHOWN ON
MAP OF "ROBERTS ESTATES"
FILED IN M & P 32 - 49.

SET NAIL AND TAG (LS 3870)
IN TOP OF RETAINING WALL
AT TRUE CORNER LOCATION.

SET NAIL AND TAG (LS 3870)
IN RETAINING WALL FOUNDATION
AT TRUE CORNER LOCATION.



9318CREC.OCD