

CORNER RECORD

Document Number

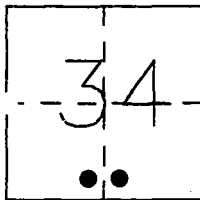
CR-97-17

City of _____

County of SAN JOAQUIN

, California

Brief Legal Description SOUTHEAST & SOUTHWEST CORNER OF PARCEL "A" AS SHOWN ON THE PARCEL MAP
FILED IN BOOK 11 OF PARCEL MAPS, AT PAGE 77, SOUTH 1/2 OF SECTION 34, T.1 S., R.9 E., M.D.B. & M.



CORNER TYPE

Government Corner ☐Control ☐Meander ☐Property ☒Rancho ☐Other ☐Date of Survey 3-26-97

COORDINATES

(Optional)

N. _____

E. _____

Zone _____ Datum _____

Elev. _____

Corner - Left as found ☐ Found and tagged ☐ Established ☐ Reestablished ☒ Rebuilt ☐

Identification and type of corner found: Evidence used to identify or procedure used to establish or reestablish the corner: 3/4" IRON PIPE NOT TAGGED AT SOUTHEAST CORNER OF PARCEL "A"

AND 3/4" IRON PIPE TAGGED L.S. 3580 AT THE SOUTHWEST CORNER OF PARCEL "A"

DESTROYED DURING CONSTRUCTION OF S.S.J.I.D. IRRIGATION LINE LATERAL "B".

FOUND WITNESS CORNERS AS SHOWN ON CORNER RECORD CR-97-10

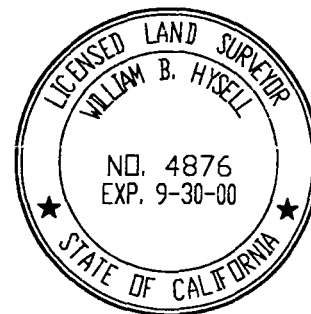
A description of the physical condition of the monument as shown and as set or reset: SET 3/4" X 30"
IRON PIPES WITH PLASTIC PLUG STAMPED LS 4876 USING TIES SHOWN ON

CORNER RECORD CR-97-10

SURVEYOR'S STATEMENT

THIS CORNER RECORD WAS PREPARED BY ME OR UNDER MY DIRECTION IN CONFORMANCE WITH
THE LAND SURVEYORS' ACT ON APRIL 10, 1997.

SIGNED William B. Hyell L.S. NUMBER 4876



COUNTY SURVEYOR'S STATEMENT

THIS CORNER RECORD WAS RECEIVED JULY 15, 1997 AND EXAMINED
AND FILED JULY 21, 1997.

SIGNED Henry M. Hirata TITLE County Surveyor

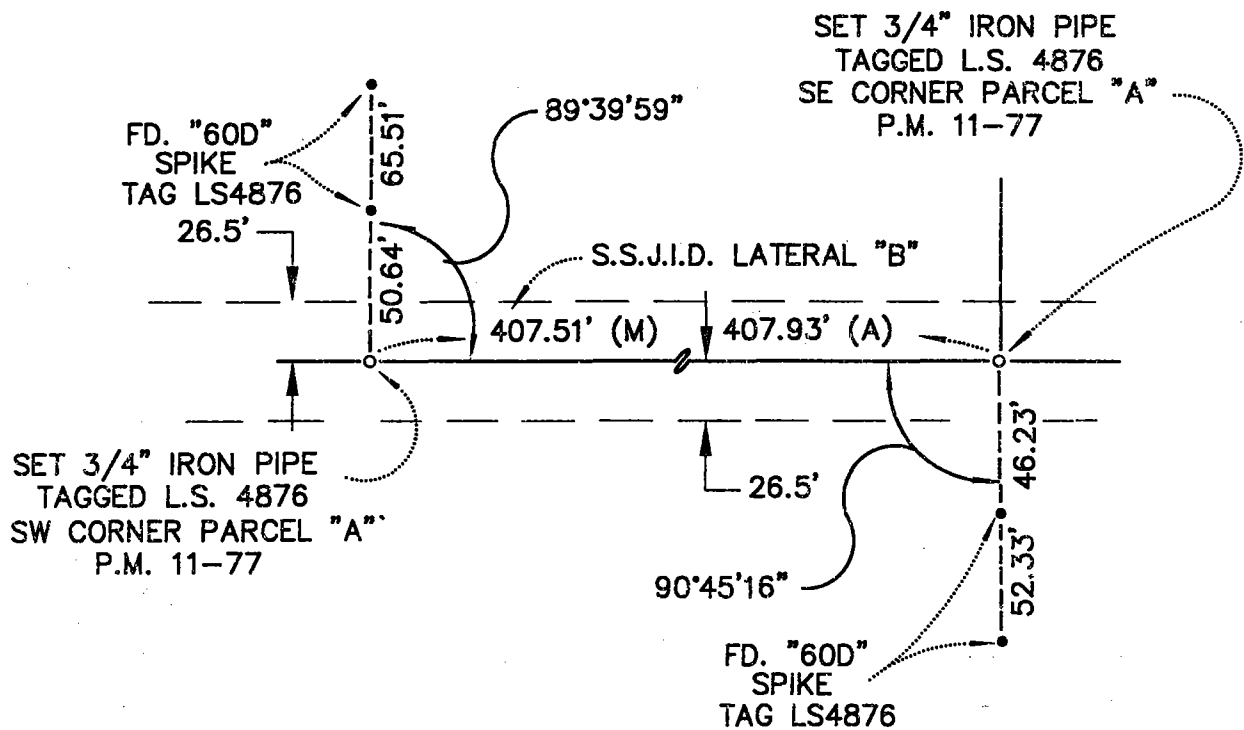


COUNTY SURVEYOR'S COMMENT _____



NOT TO SCALE

PARCEL "A"



LEGEND:

(A) PARCEL MAP BK. 11, PG. 77
S.J.C.R.