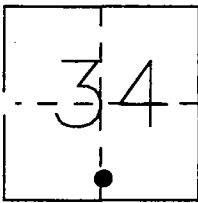


# CORNER RECORD

Document Number CR-97-16

City of \_\_\_\_\_ County of SAN JOAQUIN, California

Brief Legal Description NORTHEAST CORNER OF LOT 2 AS SHOWN ON THE PLAT OF THE WILLIAM CAMPBELL TRACT, M.& P. 10-47, BEING IN THE SOUTH HALF OF SECTION 34, T.1 S., R.9 E., M.D.B.& M.



### CORNER TYPE

- Government Corner
- Meander
- Rancho
- Date of Survey 3-26-97
- Control
- Property
- Other

### COORDINATES

(Optional)  
 N. \_\_\_\_\_  
 E. \_\_\_\_\_  
 Zone \_\_\_\_\_ Datum \_\_\_\_\_  
 Elev. \_\_\_\_\_

Corner - Left as found  Found and tagged  Established  Reestablished  Rebuilt

Identification and type of corner found: Evidence used to identify or procedure used to establish or reestablish the corner: 3/4" IRON PIPE TAGGED R.C.E. 6152 SET FOR THE NORTHEAST CORNER OF LOT 2 OF THE WILLIAM CAMPBELL TRACT AS SHOWN IN BOOK 10 OF MAPS AND PLATS AT PAGE 47, S.J.C.R., AS SHOWN ON AN UNFILED SURVEY BY R. B. WELTY DATED APRIL 1964. DESTROYED DURING CONSTRUCTION OF S.S.J.I.D. IRRIGATION LINE LATERAL "B".

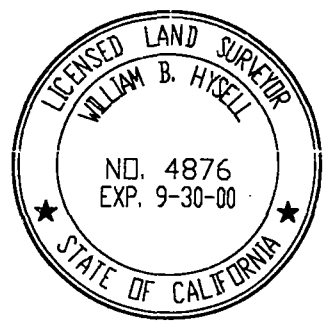
FOUND WITNESS CORNERS AS SHOWN ON CORNER RECORD CR-97-15

A description of the physical condition of the monument as shown and as set or reset: SET 3/4" X 30" IRON PIPE WITH PLASTIC PLUG STAMPED LS 4876 USING TIES SHOWN ON CORNER RECORD CR-97-15

### SURVEYOR'S STATEMENT

THIS CORNER RECORD WAS PREPARED BY ME OR UNDER MY DIRECTION IN CONFORMANCE WITH THE LAND SURVEYORS' ACT ON April 10, 1997.

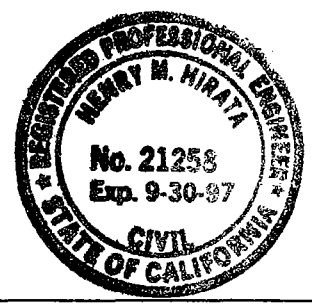
SIGNED William B. Hyzell L.S. NUMBER 4876



### COUNTY SURVEYOR'S STATEMENT

THIS CORNER RECORD WAS RECEIVED JULY 15, 1997 AND EXAMINED AND FILED JULY 21, 1997.

SIGNED Henry M. Hirata TITLE County Surveyor

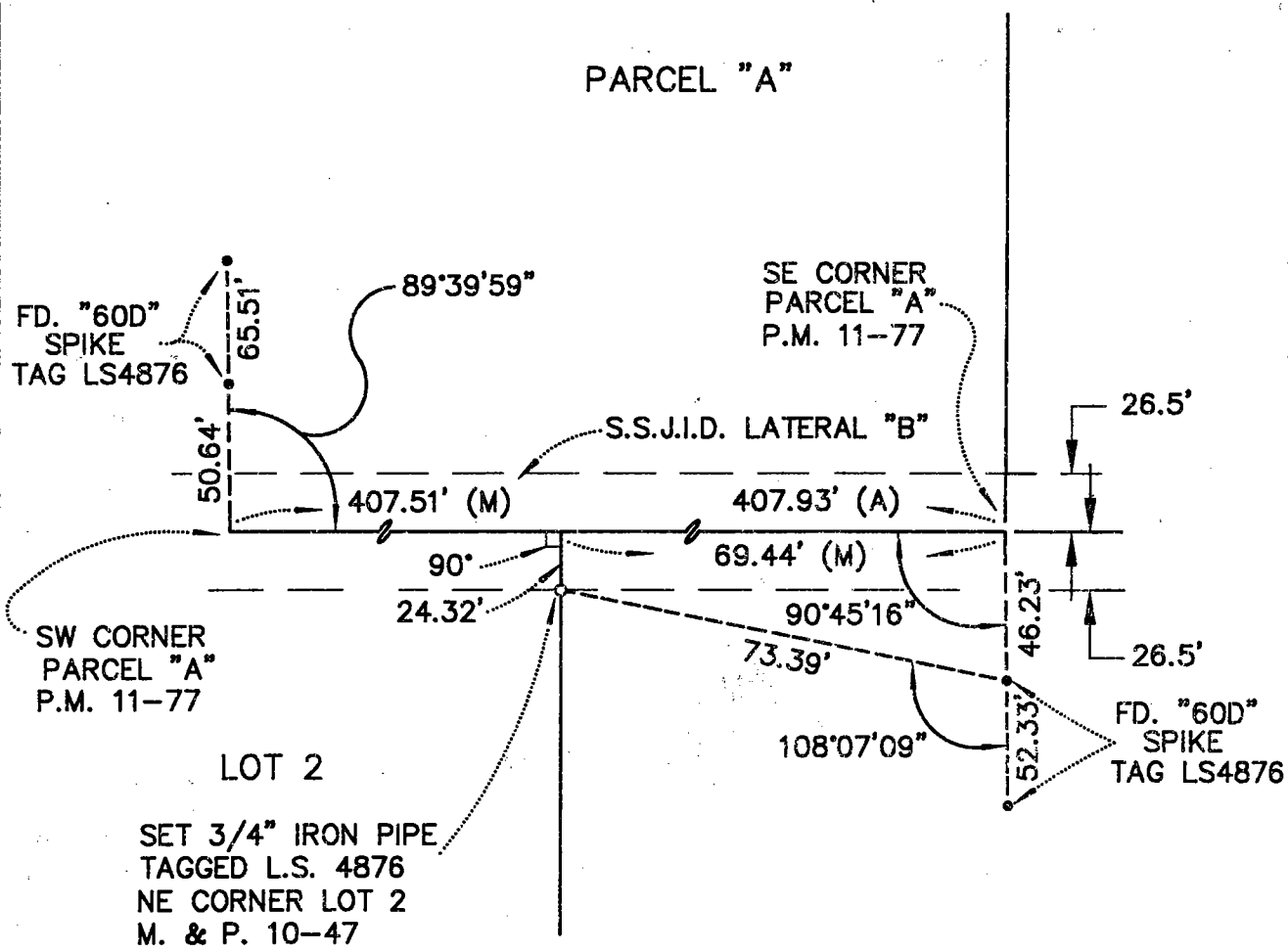


### COUNTY SURVEYOR'S COMMENT

\_\_\_\_\_  
\_\_\_\_\_  
\_\_\_\_\_



NOT TO SCALE



LEGEND:  
(A) PARCEL MAP BK. 11, PG. 77  
S.J.C.R.