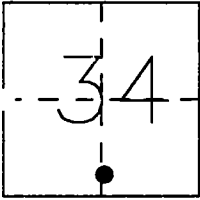


CORNER RECORD

Document Number CR-97-15

City of _____ County of SAN JOAQUIN, California

Brief Legal Description NORTHEAST CORNER OF LOT 2 AS SHOWN ON THE PLAT OF THE WILLIAM CAMPBELL TRACT, M.& P. 10-47, BEING IN THE SOUTH HALF OF SECTION 34, T.1 S., R.9 E., M.D.B.& M.



CORNER TYPE

Government Corner Control
Meander Property
Rancho Other
Date of Survey 11-11-96

COORDINATES (Optional)

N. _____
E. _____
Zone _____ Datum _____
Elev: _____

Corner - Left as found Found and tagged Established Reestablished Rebuilt

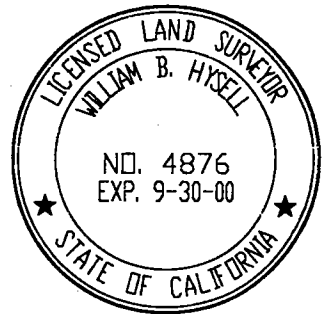
Identification and type of corner found: Evidence used to identify or procedure used to establish or reestablish the corner: FOUND 3/4" IRON PIPE TAGGED R.C.E. 6152 SET FOR THE NORTHEAST CORNER OF LOT 2 OF THE WILLIAM CAMPBELL TRACT AS SHOWN IN BOOK 10 OF MAPS AND PLATS AT PAGE 47, S.J.C.R., AS SHOWN ON AN UNFILED SURVEY BY R. B. WELTY DATED APRIL 1964. SET WITNESS CORNERS AS SHOWN ON DIAGRAM.

A description of the physical condition of the monument as shown and as set or reset: _____

SURVEYOR'S STATEMENT

THIS CORNER RECORD WAS PREPARED BY ME OR UNDER MY DIRECTION IN CONFORMANCE WITH THE LAND SURVEYORS' ACT ON APRIL 10, 1997.

SIGNED William B. Hysell L.S. NUMBER 4876



COUNTY SURVEYOR'S STATEMENT

THIS CORNER RECORD WAS RECEIVED JULY 15, 1997 AND EXAMINED AND FILED JULY 21, 1997.

SIGNED Henry M. Hirata TITLE County Surveyor

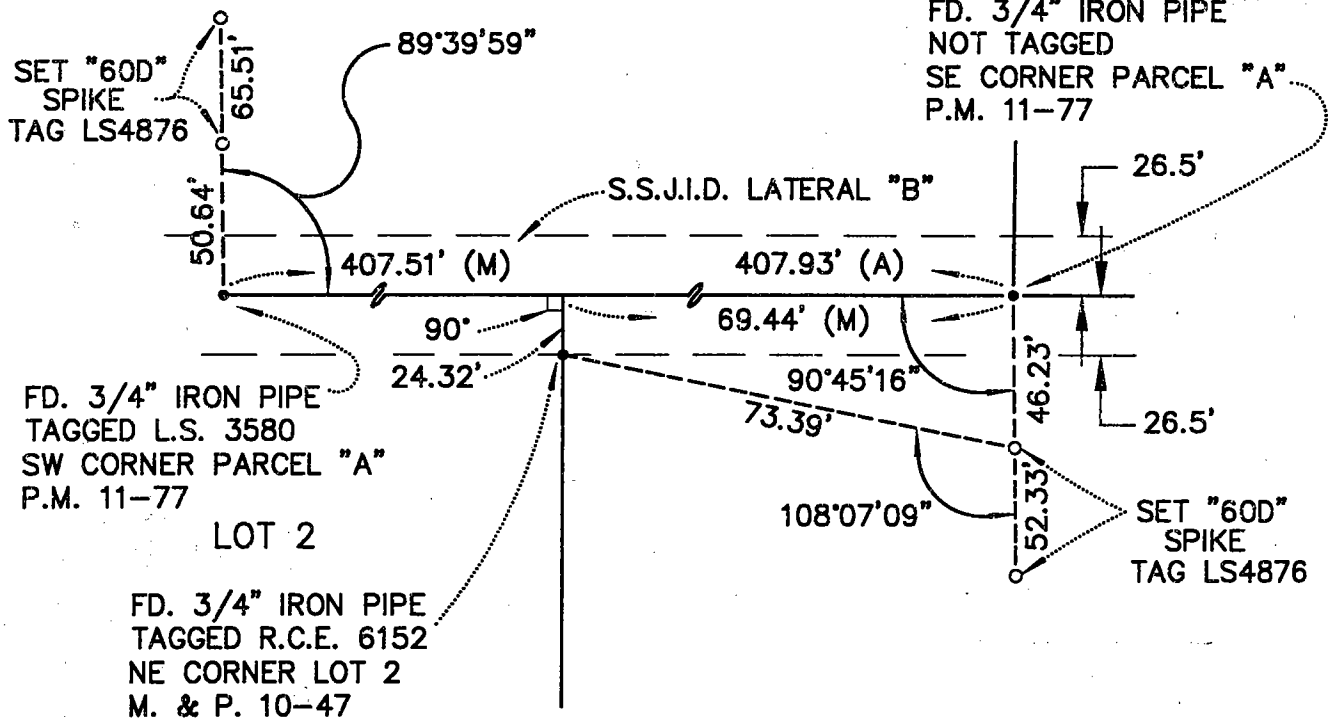


COUNTY SURVEYOR'S COMMENT



NOT TO SCALE

PARCEL "A"



LEGEND:
(A) PARCEL MAP BK. 11, PG. 77
S.J.C.R.