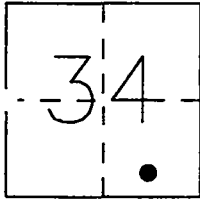


# CORNER RECORD

Document Number CR-97-14

City of \_\_\_\_\_ County of SAN JOAQUIN, California

Brief Legal Description SOUTHWEST CORNER OF PARCEL 1 AS SHOWN ON THE PARCEL MAP FILED IN BOOK 17 OF PARCEL MAPS, AT PAGE 45, SOUTHEAST 1/4 OF SECTION 34, T.1 S., R.9 E., M.D.B. & M.



### CORNER TYPE

Government Corner  Control   
 Meander  Property   
 Rancho  Other   
 Date of Survey 3-26-97

### COORDINATES

(Optional)  
 N. \_\_\_\_\_  
 E. \_\_\_\_\_  
 Zone \_\_\_\_\_ Datum \_\_\_\_\_  
 Elev. \_\_\_\_\_

Corner - Left as found  Found and tagged  Established  Reestablished  Rebuilt

Identification and type of corner found: Evidence used to identify or procedure used to establish or reestablish the corner: 3/4" IRON PIPE TAGGED R.C.E. 33038 DESTROYED

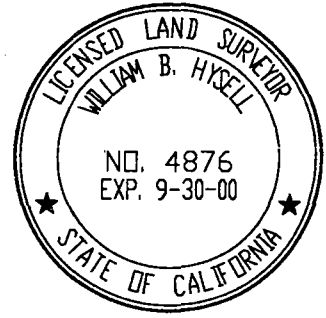
DURING CONSTRUCTION OF SSSJID IRRIGATION LINE LATERAL "B".  
FOUND WITNESS CORNERS AS SHOWN ON CORNER RECORD CR-97-13

A description of the physical condition of the monument as shown and as set or reset: SET 3/4" X 30" IRON PIPE WITH PLASTIC PLUG STAMPED LS 4876 USING TIES SHOWN ON CORNER RECORD CR-97-13

### SURVEYOR'S STATEMENT

THIS CORNER RECORD WAS PREPARED BY ME OR UNDER MY DIRECTION IN CONFORMANCE WITH THE LAND SURVEYORS' ACT ON April 10, 1997.

SIGNED William B. Hysell L.S. NUMBER 4876



### COUNTY SURVEYOR'S STATEMENT

THIS CORNER RECORD WAS RECEIVED JULY 15, 1997 AND EXAMINED AND FILED July 21, 1997.

SIGNED Henry M. Hirata TITLE County Surveyor

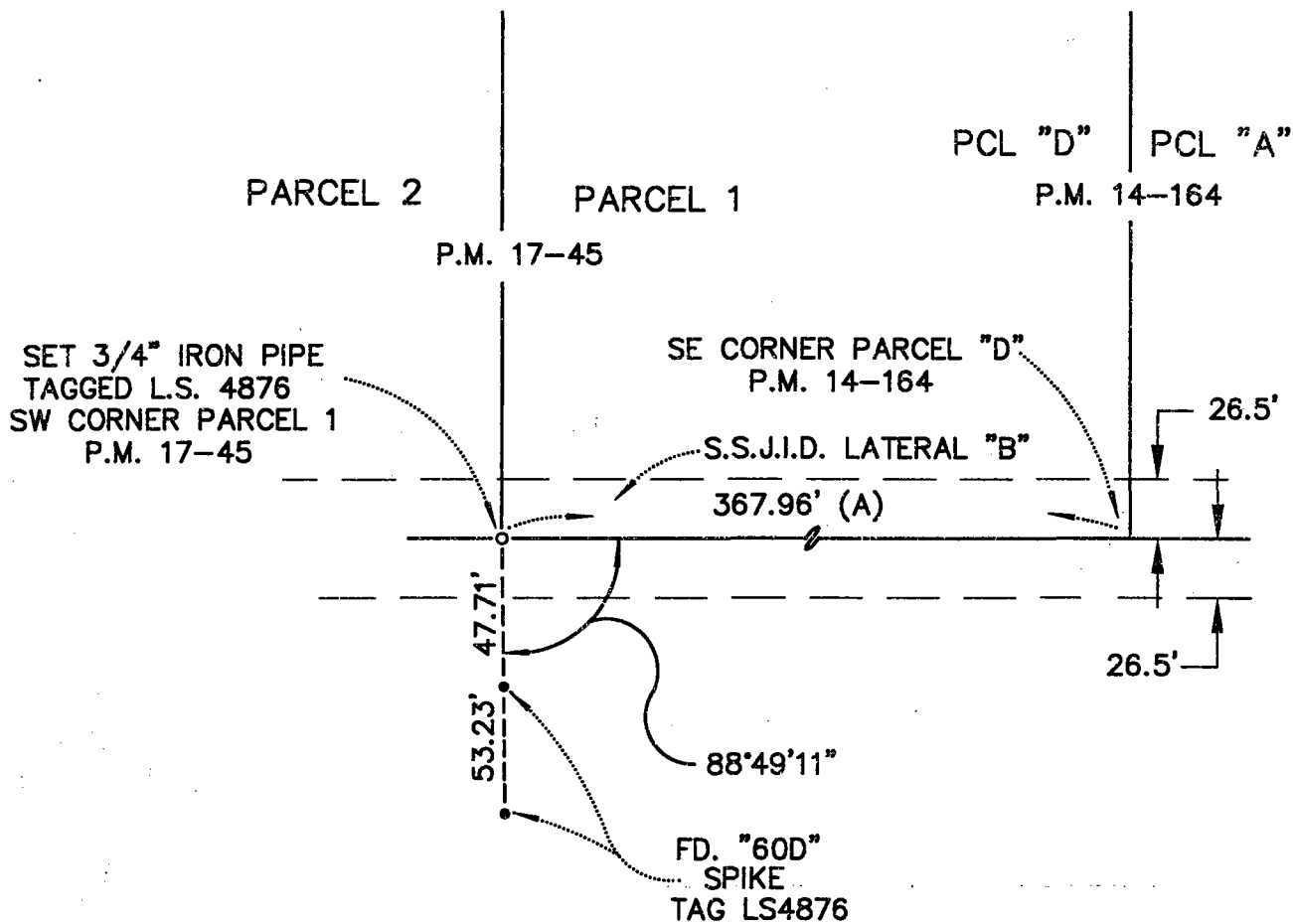


### COUNTY SURVEYOR'S COMMENT

\_\_\_\_\_  
 \_\_\_\_\_  
 \_\_\_\_\_



NOT TO SCALE



LEGEND:  
(A) PARCEL MAP BK. 17, PG. 45  
S.J.C.R.