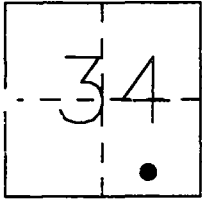


CORNER RECORD

Document Number CR-97-13

City of _____ County of SAN JOAQUIN, California

Brief Legal Description SOUTHWEST CORNER OF PARCEL 1 AS SHOWN ON THE PARCEL MAP FILED IN BOOK 17 OF PARCEL MAPS, AT PAGE 45, SOUTHEAST 1/4 OF SECTION 34, T.1 S., R.9 E., M.D.B. & M.



CORNER TYPE

Government Corner Control
 Meander Property
 Rancho Other
 Date of Survey 11-11-96

COORDINATES

(Optional)

N. _____
 E. _____
 Zone _____ Datum _____
 Elev. _____

Corner - Left as found Found and tagged Established Reestablished Rebuilt

Identification and type of corner found: Evidence used to identify or procedure used to establish or reestablish the corner: FOUND 3/4" IRON PIPE TAGGED R.C.E. 33038

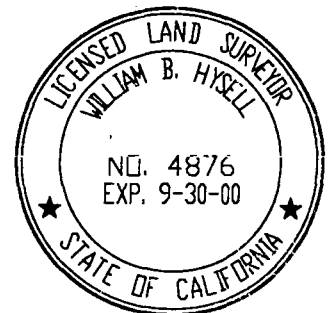
SET WITNESS CORNERS AS SHOWN ON DIAGRAM.

A description of the physical condition of the monument as shown and as set or reset: _____

SURVEYOR'S STATEMENT

THIS CORNER RECORD WAS PREPARED BY ME OR UNDER MY DIRECTION IN CONFORMANCE WITH THE LAND SURVEYORS' ACT ON April 10, 19 97.

SIGNED William B. Hysell L.S. NUMBER 4876



COUNTY SURVEYOR'S STATEMENT

THIS CORNER RECORD WAS RECEIVED JULY 15, 19 97 AND EXAMINED AND FILED JULY 21, 19 97.

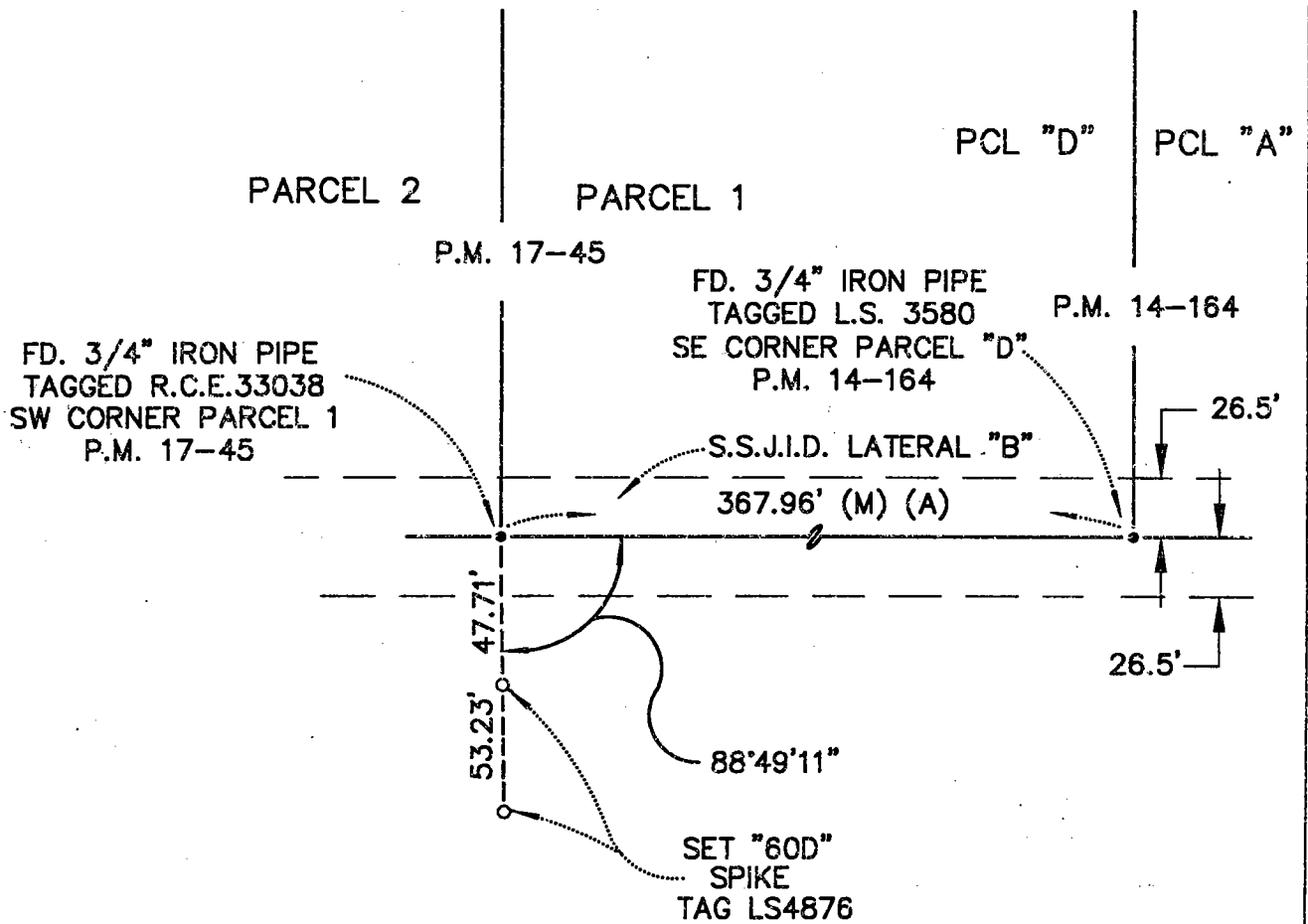
SIGNED Henry M. Hirata TITLE County Surveyor



COUNTY SURVEYOR'S COMMENT



NOT TO SCALE



LEGEND:
(A) PARCEL MAP BK. 17, PG. 45
S.J.C.R.