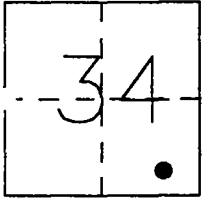


CORNER RECORD

Document Number CR-97-12

City of _____ County of SAN JOAQUIN, California

Brief Legal Description SOUTHEAST CORNER OF PARCEL "D" AS SHOWN ON THE PARCEL MAP FILED IN BOOK 14 OF PARCEL MAPS, AT PAGE 164, SOUTHEAST 1/4 OF SECTION 34, T.1 S., R.9 E., M.D.B. & M.



CORNER TYPE

Government Corner Control
Meander Property
Rancho Other
Date of Survey 3-26-97

COORDINATES

(Optional)

N. _____
E. _____
Zone _____ Datum _____
Elev. _____

Corner - Left as found Found and tagged Established Reestablished Rebuilt

Identification and type of corner found: Evidence used to identify or procedure used to establish or reestablish the corner: 3/4" IRON PIPE TAGGED L.S. 3580 DESTROYED

DURING CONSTRUCTION OF S.S.J.I.D. IRRIGATION LINE LATERAL "B".

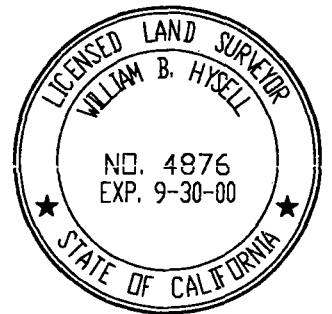
FOUND WITNESS CORNERS AS SHOWN ON CORNER RECORD CR-97-11

A description of the physical condition of the monument as shown and as set or reset: SET 3/4" X 30" IRON PIPE WITH PLASTIC PLUG STAMPED LS 4876 USING TIES SHOWN ON CORNER RECORD CR-97-11

SURVEYOR'S STATEMENT

THIS CORNER RECORD WAS PREPARED BY ME OR UNDER MY DIRECTION IN CONFORMANCE WITH THE LAND SURVEYORS' ACT ON April 10, 1997.

SIGNED William B. Hyzell L.S. NUMBER 4876



COUNTY SURVEYOR'S STATEMENT

THIS CORNER RECORD WAS RECEIVED JULY 15, 1997 AND EXAMINED AND FILED JULY 21, 1997.

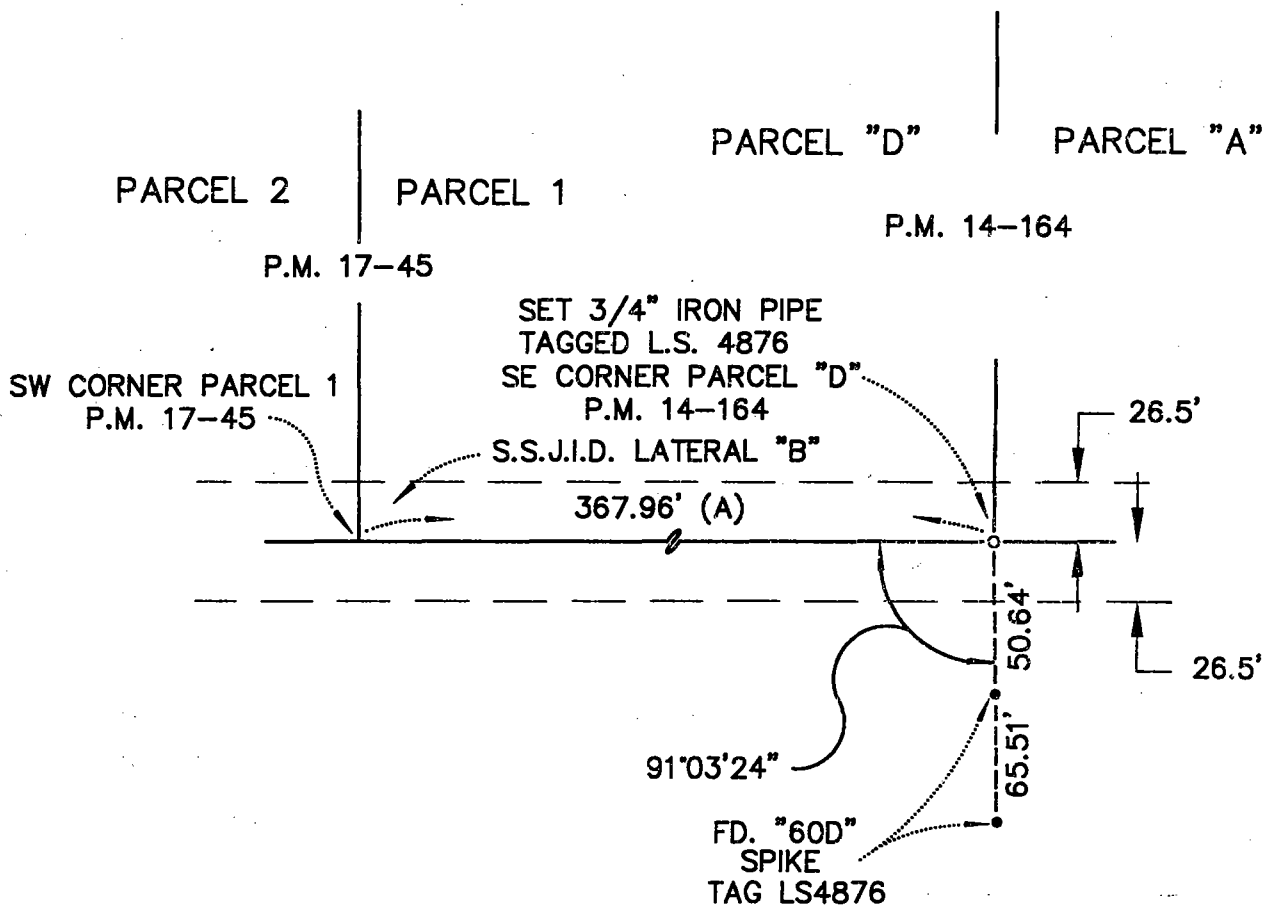
SIGNED Henry M. Hirata TITLE County Surveyor



COUNTY SURVEYOR'S COMMENT



NOT TO SCALE



LEGEND:
(A) PARCEL MAP BK. 17, PG. 45
S.J.C.R.