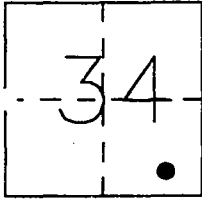


# CORNER RECORD

Document Number

CR-97-11

City of \_\_\_\_\_ County of SAN JOAQUIN, California  
Brief Legal Description SOUTHEAST CORNER OF PARCEL "D" AS SHOWN ON THE PARCEL MAP FILED  
IN BOOK 14 OF PARCEL MAPS, AT PAGE 164, SOUTHEAST 1/4 OF SECTION 34, T.1 S., R.9 E., M.D.B. & M.



## CORNER TYPE

Government Corner ☐ Control ☐  
Meander ☐ Property ☒  
Rancho ☐ Other ☐  
Date of Survey 11-11-96

## COORDINATES

(Optional)

N. \_\_\_\_\_  
E. \_\_\_\_\_  
Zone \_\_\_\_\_ Datum \_\_\_\_\_  
Elev. \_\_\_\_\_

Corner — Left as found ☒ Found and tagged ☐ Established ☐ Reestablished ☐ Rebuilt ☐

Identification and type of corner found: Evidence used to identify or procedure used to establish or reestablish the corner: FOUND 3/4" IRON PIPE TAGGED L.S. 3580

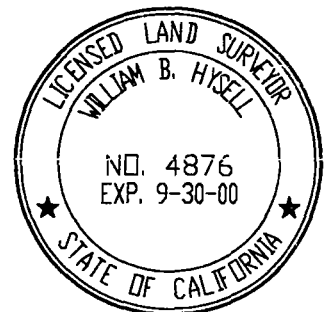
SET WITNESS CORNERS AS SHOWN ON DIAGRAM.

A description of the physical condition of the monument as shown and as set or reset: \_\_\_\_\_

## SURVEYOR'S STATEMENT

THIS CORNER RECORD WAS PREPARED BY ME OR UNDER MY DIRECTION IN CONFORMANCE WITH THE LAND SURVEYORS' ACT ON April 10, 1997.

SIGNED William B. Hysell L.S. NUMBER 4876



## COUNTY SURVEYOR'S STATEMENT

THIS CORNER RECORD WAS RECEIVED JULY 15, 1997 AND EXAMINED AND FILED JULY 21, 1997.

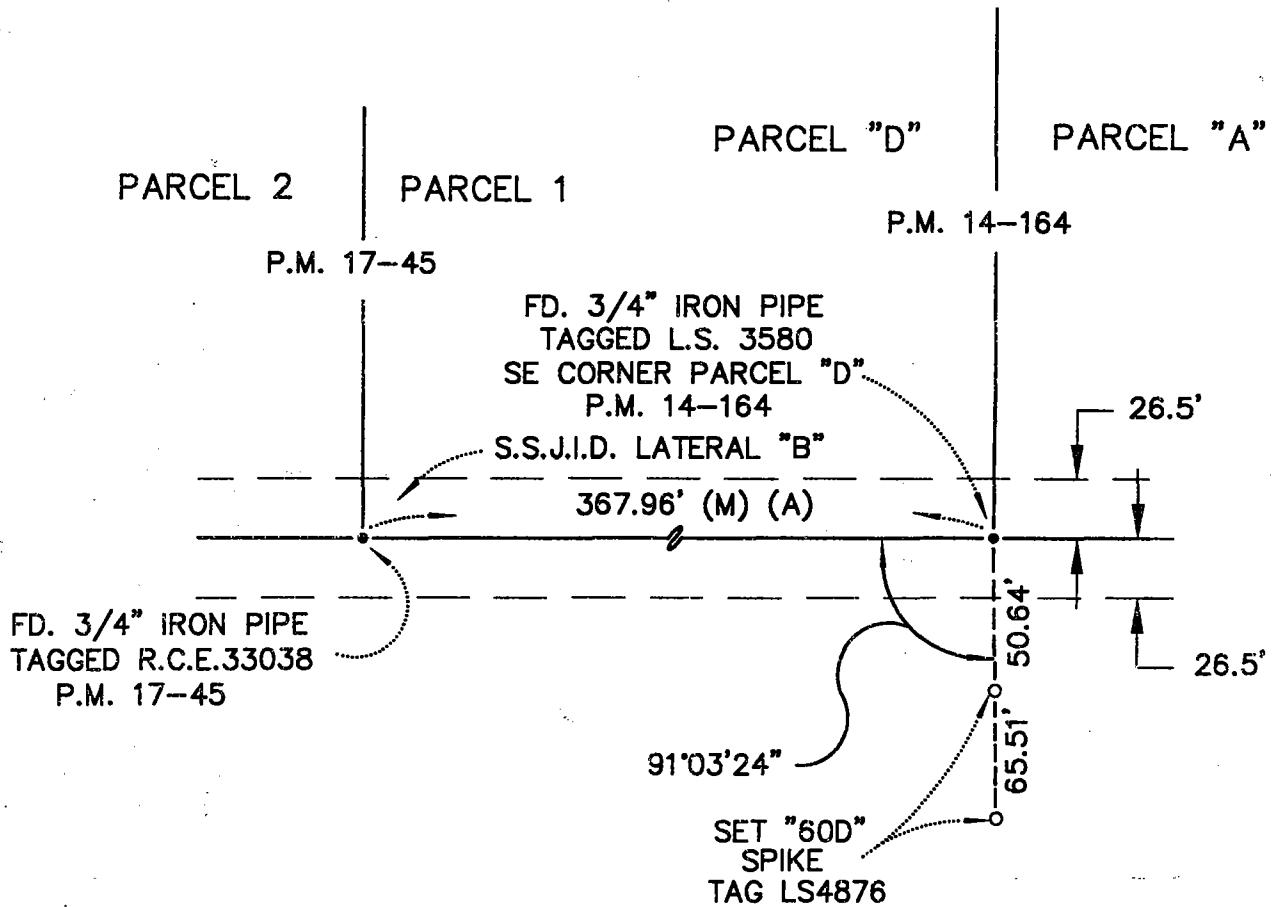
SIGNED Henry M. Hirata TITLE County Surveyor



COUNTY SURVEYOR'S COMMENT \_\_\_\_\_



NOT TO SCALE



LEGEND:  
(A) PARCEL MAP BK. 17, PG. 45  
S.J.C.R.