

# CORNER RECORD

Document Number

CR-97-10

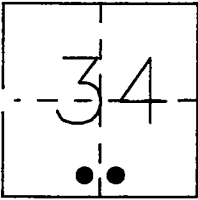
City of \_\_\_\_\_

County of

SAN JOAQUIN

, California

Brief Legal Description SOUTHEAST & SOUTHWEST CORNER OF PARCEL "A" AS SHOWN ON THE PARCEL MAP FILED IN BOOK 11 OF PARCEL MAPS, AT PAGE 77, SOUTH HALF OF SECTION 34, T.1 S., R.9 E., M.D.B. & M.



### CORNER TYPE

Government Corner  Control   
 Meander  Property   
 Rancho  Other   
 Date of Survey 11-11-96

### COORDINATES

(Optional)

N. \_\_\_\_\_  
 E. \_\_\_\_\_  
 Zone \_\_\_\_\_ Datum \_\_\_\_\_  
 Elev. \_\_\_\_\_

Corner - Left as found  Found and tagged  Established  Reestablished  Rebuilt

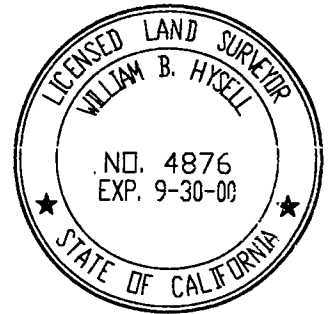
Identification and type of corner found: Evidence used to identify or procedure used to establish or reestablish the corner: FOUND 3/4" IRON PIPE NOT TAGGED AT THE SOUTHEAST CORNER OF PARCEL "A".  
FOUND 3/4" IRON PIPE TAGGED L.S. 3580 AT THE SOUTHWEST CORNER OF PARCEL "A".  
SET WITNESS CORNERS AS SHOWN ON DIAGRAM.

A description of the physical condition of the monument as shown and as set or reset: \_\_\_\_\_

### SURVEYOR'S STATEMENT

THIS CORNER RECORD WAS PREPARED BY ME OR UNDER MY DIRECTION IN CONFORMANCE WITH THE LAND SURVEYORS' ACT ON April 10, 1997.

SIGNED William B. Hyse L.S. NUMBER 4876



### COUNTY SURVEYOR'S STATEMENT

THIS CORNER RECORD WAS RECEIVED JULY 15, 1997 AND EXAMINED AND FILED JULY 21, 1997.

SIGNED Henry M. Hirata TITLE County Surveyor

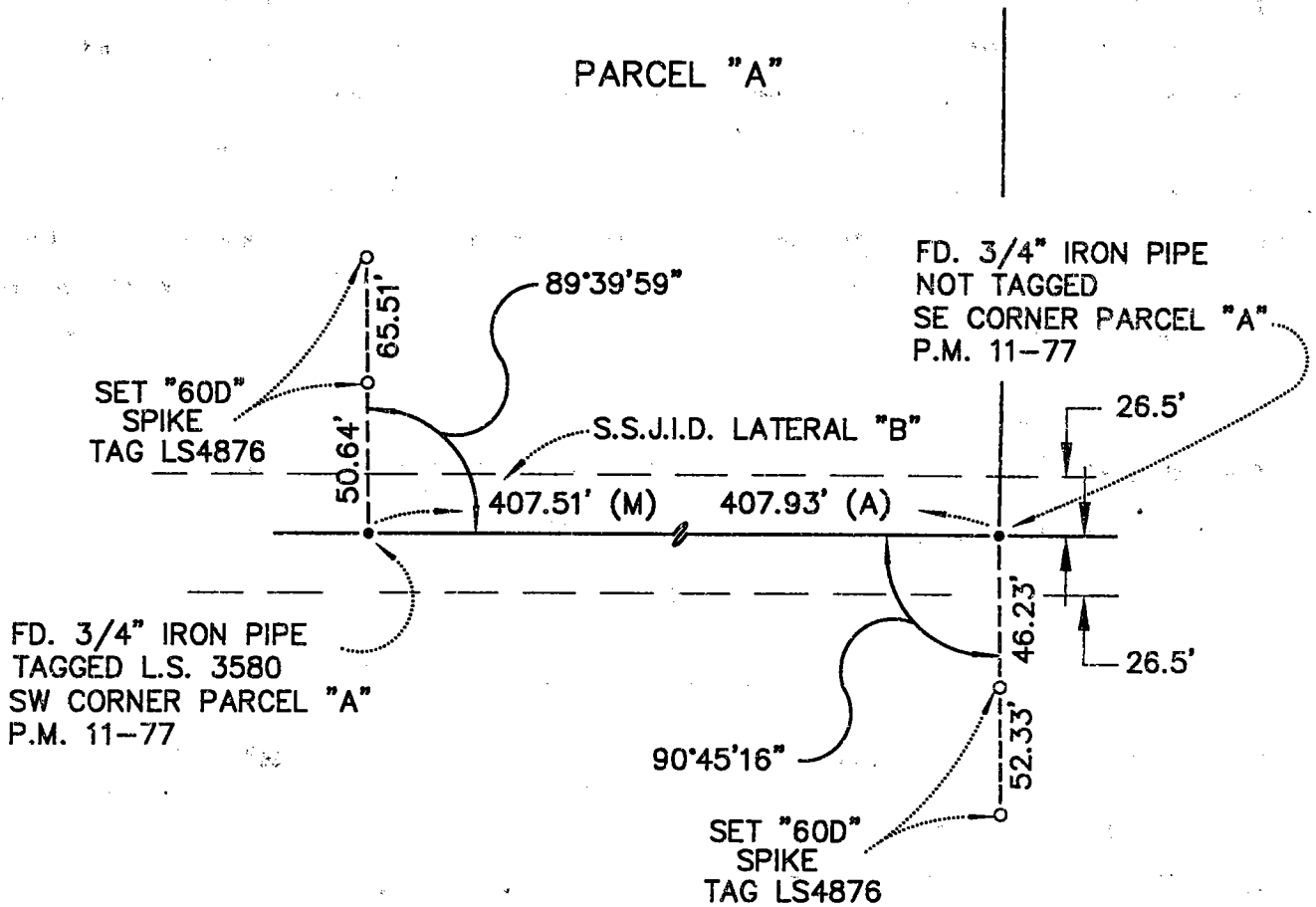


### COUNTY SURVEYOR'S COMMENT



NOT TO SCALE

PARCEL "A"



LEGEND:  
(A) PARCEL MAP BK. 11, PG. 77  
S.J.C.R.