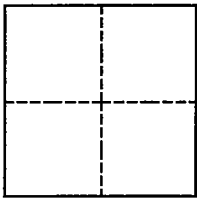


CORNER RECORD

Document Number CR-97-05
City of Stockton County of San Joaquin, California

Brief Legal Description SE 1/4 OF SE 1/4 OF SECTION 11 OF THE C.M. WEBER GRANT, Lots 304 and 305 of Mosswood Park Map 'C', Maps and Plats, Book 11, Page 4.



CORNER TYPE

Government Corner Control
Meander Property
Rancho Other
Date of Survey 11/96

COORDINATES

(Optional)

N. _____
E. _____
Zone _____ Datum _____
Elev. _____

Corner - Left as found Found and tagged Established Reestablished Rebuilt

Identification and type of corner found: Evidence used to identify or procedure used to establish or reestablish the corner : Found possible centerline monument 18" below pavement surface at the approximate centerline of Wait Ave. and property corners for lots 304 and 305(see sketch), as shown on Maps and Plats, Book 11 at Page 4.

A description of the physical condition of the monument as found and as set or reset: Found monument is a 2" iron pipe, not tagged. Found property corners are 1" iron pipes, not tagged. Set 20 penny nail above 2" iron pipe and concrete nails and shiners in pavement and chiseled crows foot on concrete abutment for reference ties(see sketch).

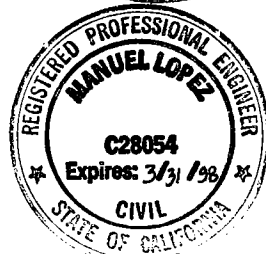
SURVEYOR'S STATEMENT

This Corner Record was prepared by me or under my direction in conformance with the Land Surveyors' Act on DECEMBER 31, 19 96.
Signed Robert E. Chesner (L.S.) or R.C.E. Number 6670
Title SURVEYING SUPERVISOR City of Stockton Public Works Department



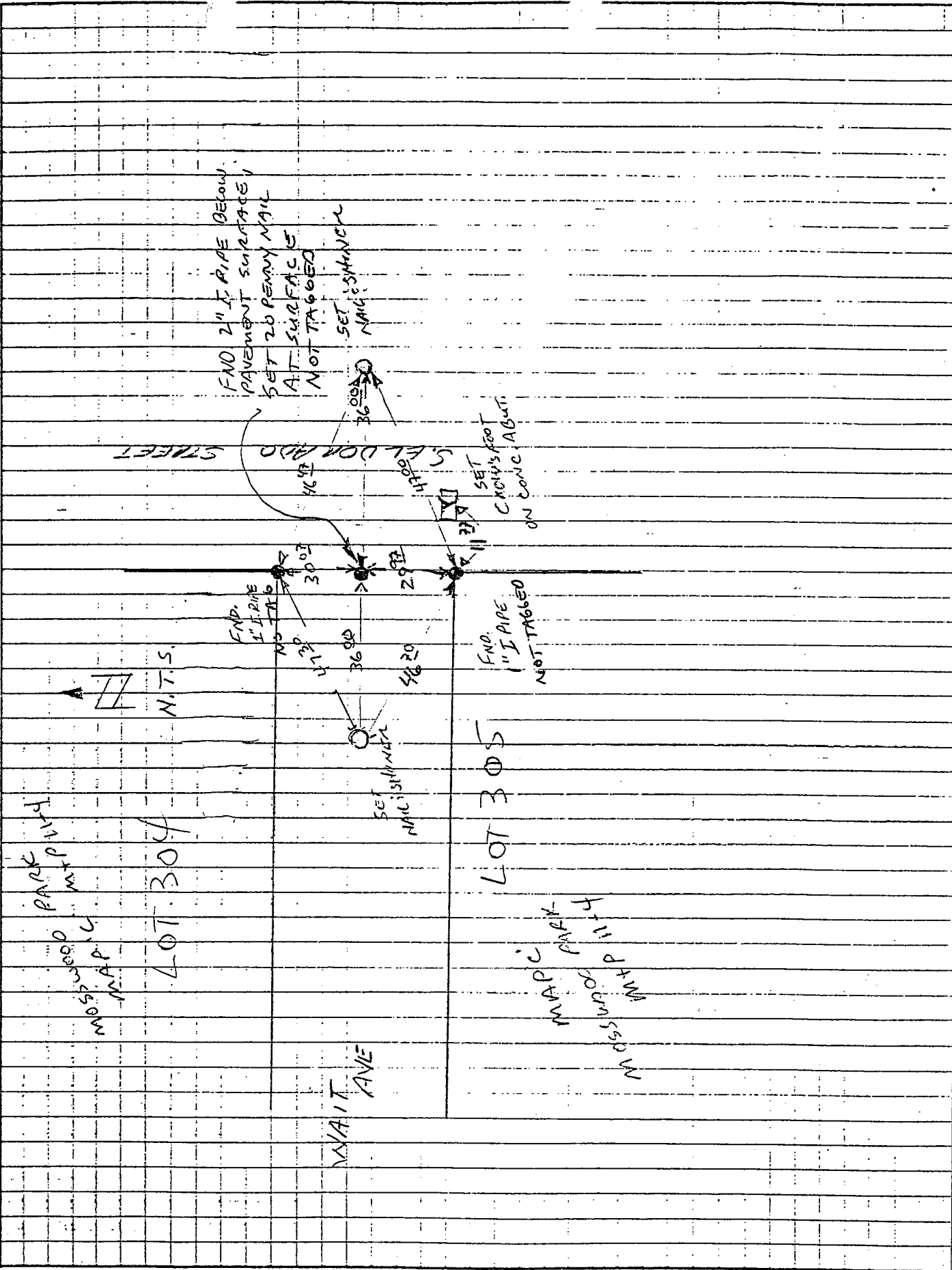
COUNTY SURVEYOR'S STATEMENT

This Corner Record was received February 27, 19 97 and examined and filed March 25, 19 97.
Signed Manuel Lopez Title for County Surveyor



County Surveyor's Comment _____

(D.D. SHEET NO. 34)



NO. 55 WARD MAP '10
 PARK WITH
 MAP '10

LOT 304

N.T.S.

W. WAIT AVE

LOT 305

NO. 55 WARD MAP '10
 PARK WITH
 MAP '10

FND 2" I. PIPE BELOW
 PAVEMENT SURFACE
 SET 20 PENNY NAIL
 AT SURFACE
 NOT TAGGED

SET
 NAIL SHANK

W. ELDON AVE STREET

SET
 CROW'S FOOT
 ON CONC. ABUT.

FND. 1" I. PIPE
 NOT TAGGED

SET
 NAIL SHANK