

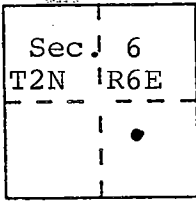
CORNER RECORD

Document Number CR-97-02

City of Stockton

County of San Joaquin, California

Brief Legal Description Centerline Monument #36 as shown on the map of "Spanish Bay" filed for Record in Book 32 of Maps & Plats, at Page 90, SJCR.



CORNER TYPE

- Government Corner
- Meander
- Rancho
- Date of Survey Jan. 15, 1997
- Control
- Property
- Other

COORDINATES (Optional)

N. _____
 E. _____
 Zone _____ Datum _____
 Elev. _____

Corner — Left as found Found and tagged Established Reestablished Rebuilt

Identification and type of corner found: Evidence used to identify or procedure used to establish or reestablish the corner: Found centerline monument #36 in landscape island, set witness corners on radial line of Point of Reverse Curves at Right-of-Way.

A description of the physical condition of the monument as found and as set or reset: centerline monument is 3/4" iron pin, tagged RCE 15831 set in cast iron monument box. Set chiseled "V" on top of concrete curb, 11.65 feet along radial lines of point of reverse curves. (see detail drawing on reverse side)

SURVEYOR'S STATEMENT

This Corner Record was prepared by me or under my direction in conformance with the Land Surveyors' Act on Jan. 15, 1997.

Signed Albert R. Sanguineti R.C.E. Number 15831



COUNTY SURVEYOR'S STATEMENT

This Corner Record was received January 16, 1997 and examined and filed January 31, 1997.

Signed Henry M. Hirata Title County Surveyor



County Surveyor's Comment _____

SPANISH BAY

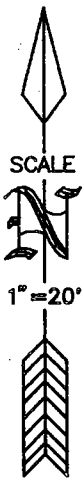
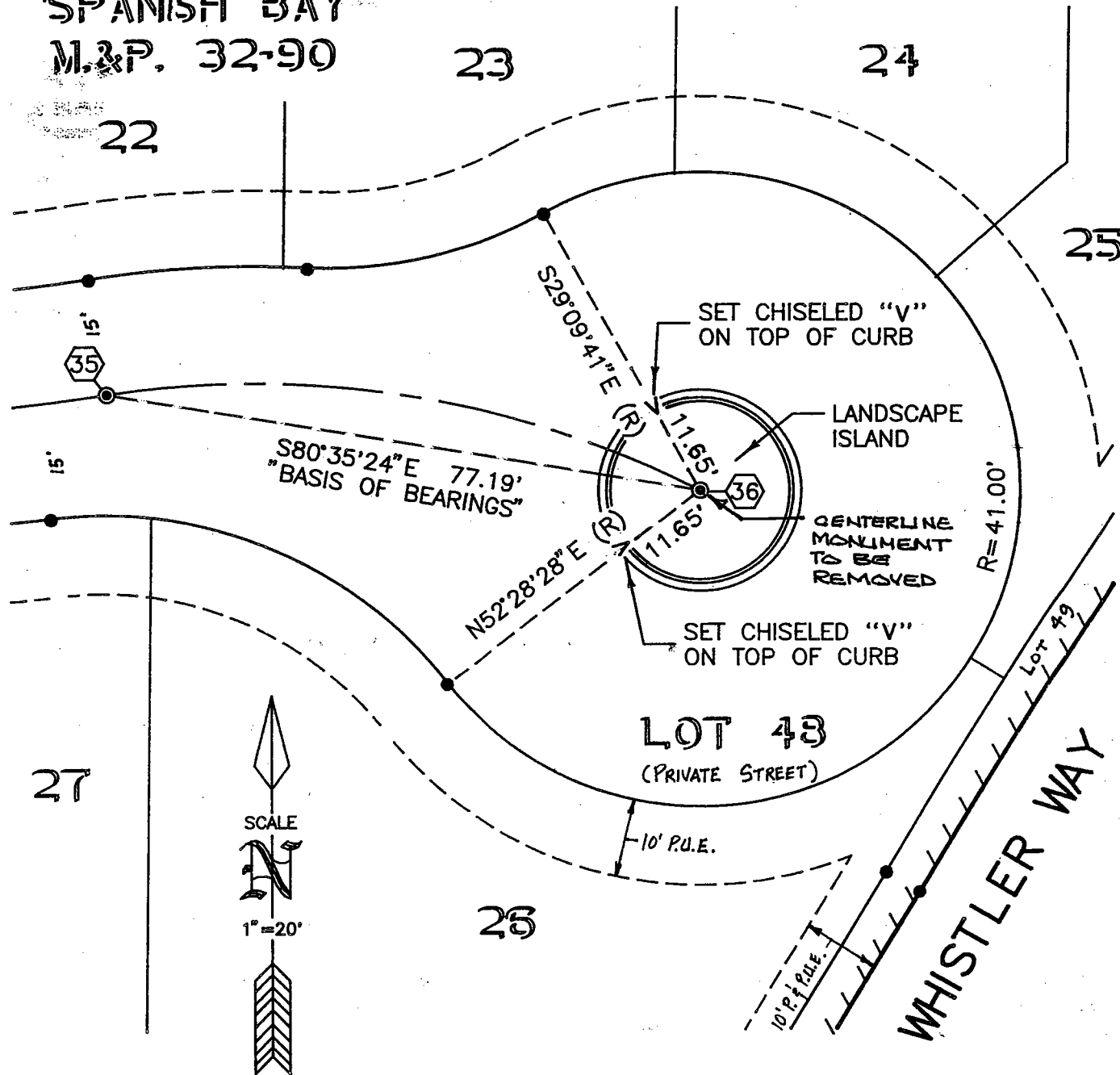
M.&P. 32-90

23

24

22

25



LEGEND

- FOUND 3/4" IRON PIN WITH CAP STAMPED "R.C.E. 15831" PER M.&P. 32-90
- ⊙ FOUND 3/4" IRON PIN WITH CAP STAMPED "R.C.E. 15831" IN MONUMENT WELL PER M.&P. 32-90

M.&P. MAPS AND PLATS, BOOK-PAGE

(R) RADIAL BEARING
P.U.E. PUBLIC UTILITY EASEMENT

BASIS OF BEARINGS

THE BASIS OF BEARINGS FOR THIS SURVEY IS THE LINE BETWEEN FOUND CENTERLINE MONUMENTS 35 AND 36 AS SHOWN ON THE MAP OF "SPANISH BAY", FILED FOR RECORD IN BOOK 32 OF MAPS AND PLATS, AT PAGE 90, SAN JOAQUIN COUNTY RECORDS, AS S80°35'24"E.