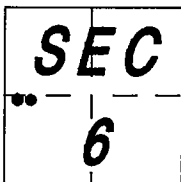


CORNER RECORD

DOCUMENT NUMBER CR-96-10

CITY OF RIPON COUNTY OF SAN JOAQUIN, CALIFORNIA
BRIEF LEGAL DESCRIPTION: THE NE AND NW CORNERS OF PARCEL 'A', BK 8 OF PARCEL MAPS, PG 124.



CORNER TYPE

GOV'T CORNER CONTROL
MEANDER PROPERTY
RANCHO OTHER
DATE OF SURVEY: JANUARY 5, 1996

COORDINATES (OPTIONAL)

N. _____
E. _____
ZONE _____ DATUM _____
ELEVATION _____

CORNER - LEFT AS FOUND FOUND AND TAGGED ESTABLISHED REESTABLISHED REBUILT

IDENTIFICATION AND TYPE OF CORNER FOUND: EVIDENCE USED TO IDENTIFY OR PROCEDURE USED TO ESTABLISH OR REESTABLISH CORNER:

*MONUMENTS AS SHOWN ON MAP FILED IN BOOK 8 OF PARCEL MAPS, PAGE 124, SAN JOAQUIN COUNTY RECORDS.
SEE SKETCH ON SHEET 2 FOR METHOD USED TO REESTABLISH CORNERS.*

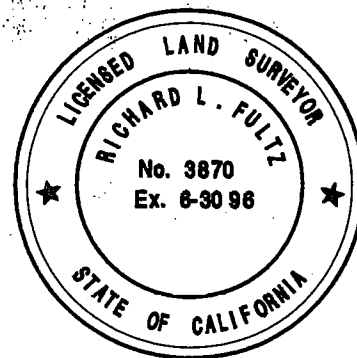
A DESCRIPTION OF THE PHYSICAL CONDITION OF THE MONUMENT AS FOUND AND AS SET OR RESET:

SET 3/4" IRON PIPES TAGGED L.S. 3870.

SURVEYOR'S STATEMENT

THIS CORNER RECORD WAS PREPARED BY ME OR UNDER MY DIRECTION IN CONFORMANCE WITH THE LAND SURVEYORS' ACT ON FEBRUARY 21, 1996.

SIGNED Richard L. Fultz L.S. NUMBER 3870
RICHARD L. FULTZ (EXPIRES 6-30-96)



COUNTY SURVEYOR'S STATEMENT

THIS CORNER RECORD WAS RECEIVED APRIL 3, 1996 AND EXAMINED AND FILED APRIL 15, 1996.

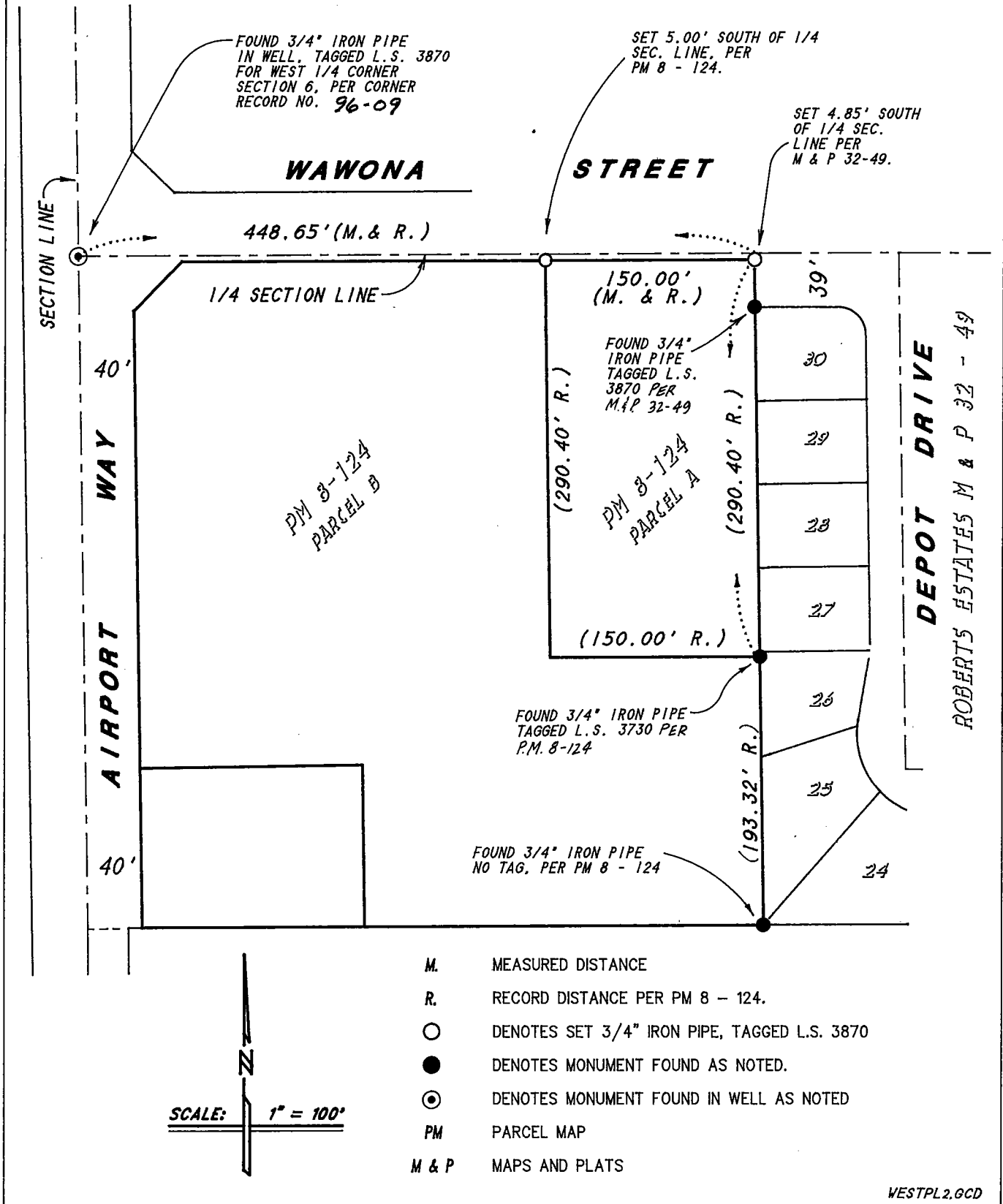
SIGNED Henry M. Hirata TITLE COUNTY SURVEYOR



COUNTY SURVEYOR'S COMMENTS

CORNER RECORD

**A PORTION OF THE NORTHWEST QUARTER,
OF THE SOUTHWEST QUARTER
OF SECTION 6, T.2 S., R.7 E.**



- M. MEASURED DISTANCE
- R. RECORD DISTANCE PER PM 8 - 124.
- DENOTES SET 3/4" IRON PIPE, TAGGED L.S. 3870
- DENOTES MONUMENT FOUND AS NOTED.
- ⊙ DENOTES MONUMENT FOUND IN WELL AS NOTED
- PM PARCEL MAP
- M & P MAPS AND PLATS

WESTPL2.GCD