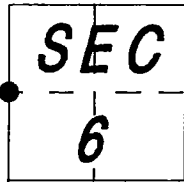


CORNER RECORD

DOCUMENT NUMBER CR-96-08

CITY OF RIPON COUNTY OF SAN JOAQUIN, CALIFORNIA
BRIEF LEGAL DESCRIPTION: THE WEST QUARTER CORNER OF SECTION 6, T.2 S., R.7 E., M.D.B. & M.



CORNER TYPE

GOV'T CORNER CONTROL
MEANDER PROPERTY
RANCHO OTHER
DATE OF SURVEY: JULY 28, 1995

COORDINATES (OPTIONAL)

N. _____
E. _____
ZONE _____ DATUM _____
ELEVATION _____

CORNER - LEFT AS FOUND FOUND AND TAGGED ESTABLISHED REESTABLISHED REBUILT

IDENTIFICATION AND TYPE OF CORNER FOUND: EVIDENCE USED TO IDENTIFY OR PROCEDURE USED TO ESTABLISH OR REESTABLISH CORNER:

FOUND 5/8" IRON ROD W/CAP TAGGED L.S. 2239, IN MONUMENT WELL, FOR THE WEST QUARTER CORNER OF SECTION 6, AS SHOWN ON MAP OF ROBERTS ESTATES, FILED IN BOOK 32 OF MAPS AND PLATS, PAGE 49, SAN JOAQUIN COUNTY RECORDS. SEE SKETCH SHEET 2 FOR MONUMENT TIES.

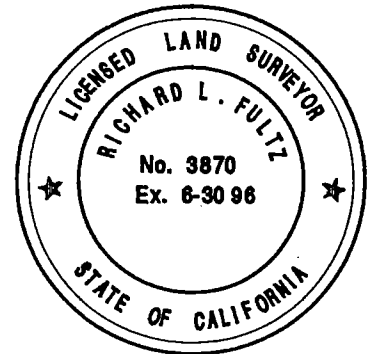
A DESCRIPTION OF THE PHYSICAL CONDITION OF THE MONUMENT AS FOUND AND AS SET OR RESET:

FOUND IN GOOD CONDITION.

SURVEYOR'S STATEMENT

THIS CORNER RECORD WAS PREPARED BY ME OR UNDER MY DIRECTION IN CONFORMANCE WITH THE LAND SURVEYORS' ACT ON FEBRUARY 21, 1996.

SIGNED Richard L. Fultz RICHARD L. FULTZ L.S. NUMBER 3870 (EXPIRES 6-30-96)



COUNTY SURVEYOR'S STATEMENT

THIS CORNER RECORD WAS RECEIVED APRIL 3, 1996 AND EXAMINED AND FILED APRIL 15, 1996.

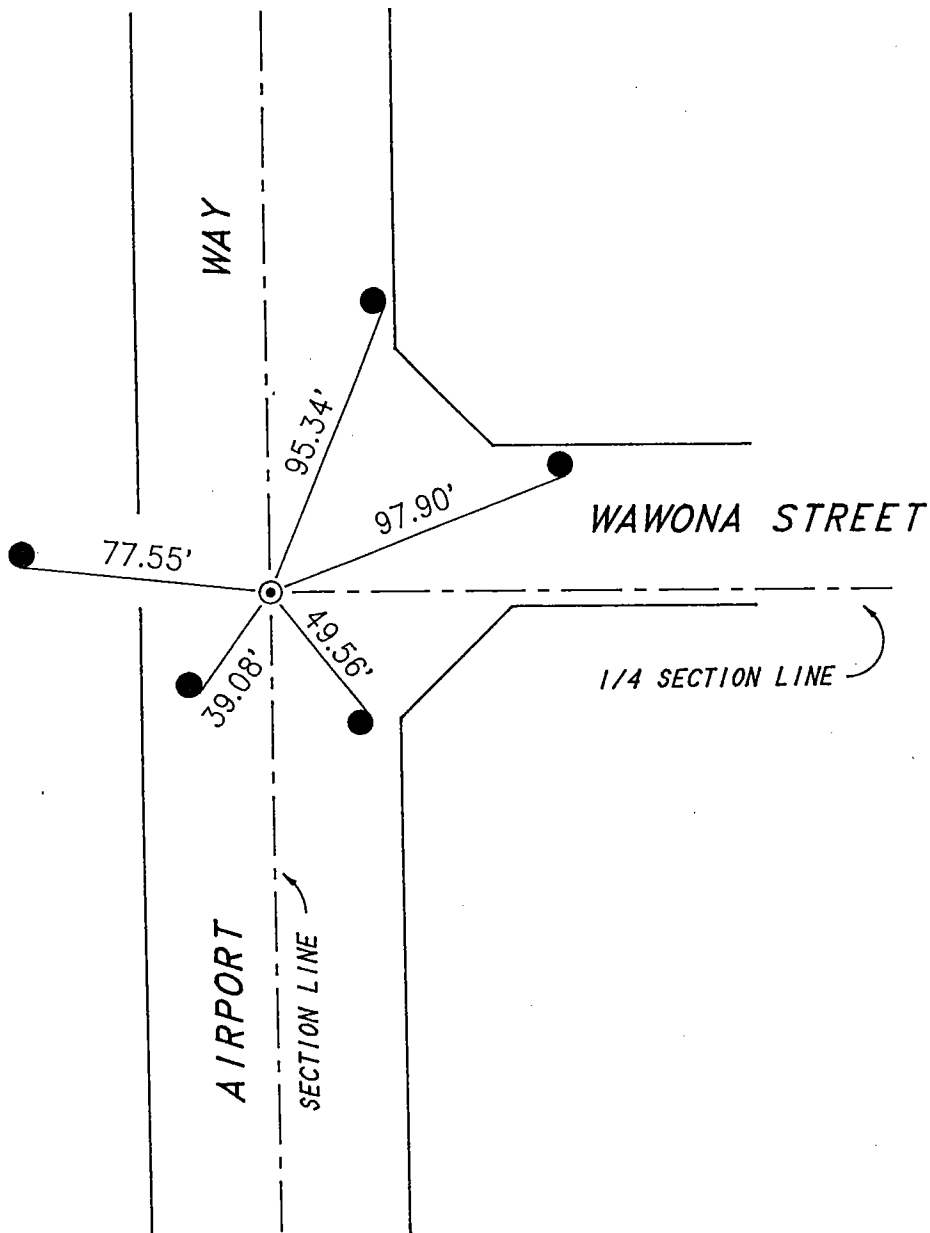
SIGNED Henry M. Hirata TITLE COUNTY SURVEYOR



COUNTY SURVEYOR'S COMMENTS

CORNER RECORD

**THE WEST QUARTER CORNER
OF SECTION 6,
T.2 S., R.7 E.**



SCALE: 1" = 60'

⊙ DENOTES FOUND 5/8" IRON ROD, TAGGED L.S. 2239
IN MONUMENT WELL.

● JOINT POWER AND TELEPHONE POLE,
NAIL AND SHINER IN POLE FOR MONUMENT TIE.

93180CRI.GCD