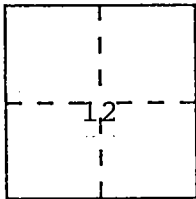


CORNER RECORD

Document Number CE-96-07

City of Lodi County of San Joaquin, California

Brief Legal Description Reset the Southwest corner of RS 5-49 and Northwest corner of RS 4-103 in Section 12, T.3N., R.6E., M.D.B.&M.



CORNER TYPE

COORDINATES (Optional)

Government Corner Control
Meander Property
Rancho Other
Date of Survey 2-22-96

N. _____
E. _____
Zone _____ Datum _____
Elev. _____

Corner — Left as found Found and tagged Established Reestablished Rebuilt

Identification and type of corner found: Evidence used to identify or procedure used to establish or reestablish the corner: Corners destroyed during street improvements.

Reset per sketch on reverse side of this sheet.

A description of the physical condition of the monument as found and as set or reset: _____

Reset corners with chiselled crosses.

SURVEYOR'S STATEMENT

This Corner Record was prepared by me or under my direction in conformance with the Land Surveyors' Act on 2-22, 19 96.

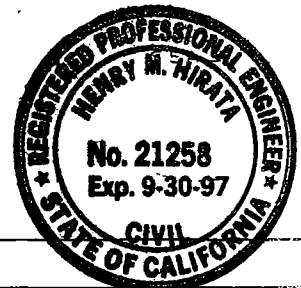
Signed [Signature] R.C.E. Number 19638



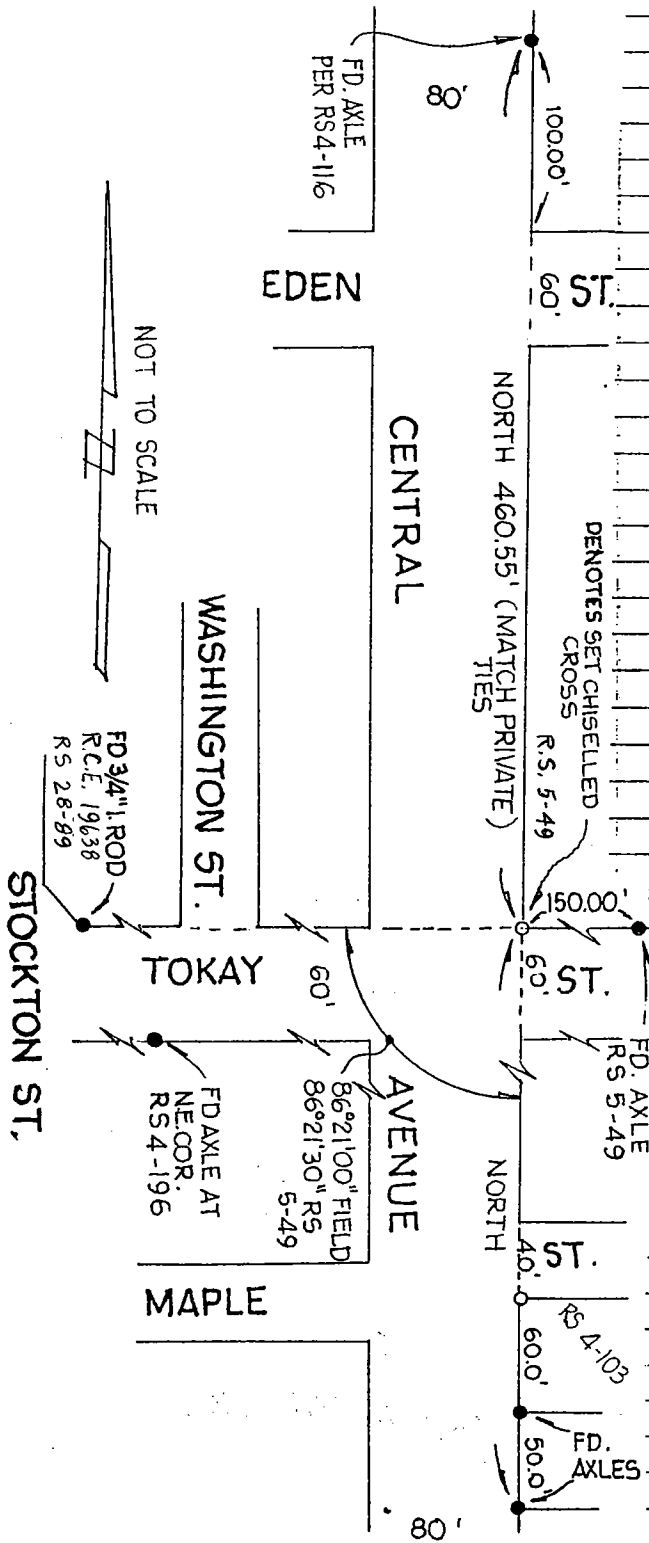
COUNTY SURVEYOR'S STATEMENT

This Corner Record was received MARCH 22, 19 96 and examined and filed APRIL 9, 19 96.

Signed Henry M. Hirata Title COUNTY SURVEYOR



County Surveyor's Comment _____



Reset chiselled cross at Northeast corner of South Central Avenue and East Tokay Street (see Record of Survey Book 5, Page 49) and set chiselled cross at Southeast corner of Central Avenue and Maple Street to replace axle (see Record of Survey Book 4, Page 103) in City of Lodi.