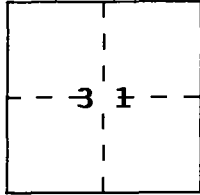


CORNER RECORD

Document Number CR-96-04

City of _____ County of San Joaquin, California
Reset 10 ft. witness corner to N.E. corner of 5.00-acre parcel
Brief Legal Description as shown on R.S. 19-82, S.J. Co. Records being a portion of
Lot 34 Wilhoit-Douglas Tract M.P. 5-40, S.J. Co. Records, Section 31,
T.1N., R.6E., M.D.B.&M.



CORNER TYPE

Government Corner Control
Meander Property
Rancho Other
Date of Survey January 26, 1996

COORDINATES
(Optional)

N. _____
E. _____
Zone _____ Datum _____
Elev. _____

Corner — Left as found Found and tagged Established Reestablished Rebuilt

Identification and type of corner found: Evidence used to identify or procedure used to establish or reestablish the corner:
Found 1" iron pipe per R.S. 19-82, San Joaquin County Records:



A description of the physical condition of the monument as found and as set or reset: _____

Set 3/4" iron pipe, tagged L.S. 4450, 30" long:



SURVEYOR'S STATEMENT

This Corner Record was prepared by me or under my direction in conformance with
the Land Surveyors' Act on Feb. 6, 1996.

Signed Michael L. Quarantoli S. of R.C.E. Number LS. 4450



COUNTY SURVEYOR'S STATEMENT

This Corner Record was received February 14, 1996 and examined
and filed February 20, 1996.

Signed Henry M. Hirata Title COUNTY SURVEYOR



County Surveyor's Comment _____

