

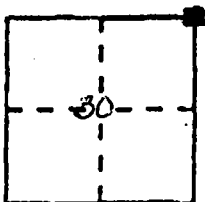
# CORNER RECORD

Document Number CR-95-022

City of Ripon

County of San Joaquin California

Brief Legal Description N.E. Corner of Section 30, T.2.S., R.8.E., M.D. B.&M.



## CORNER TYPE

Government Corner ☒ Control ☐  
 Meander ☐ Property ☐  
 Rancho ☐ Other ☐  
 Date of Survey October 2, 1995

## COORDINATES (Optional)

N. \_\_\_\_\_  
 E. \_\_\_\_\_  
 Zone \_\_\_\_\_ Datum \_\_\_\_\_  
 Elev. \_\_\_\_\_

Corner — Left as found ☐ Found and tagged ☐ Established ☐ Reestablished ☒ Rebuilt ☐

Identification and type of corner found: Evidence used to identify or procedure used to establish or reestablish the corner: Found reference PK nails (as shown on Diagram Sheet 2) at 100 foot intervals North and found 1/2" iron pipe marked "control" 460.27 feet East of the Northeast corner of Section 30, along the North line of Section 30, T.2.S., R.8.E., M.D. B.&M.

A description of the physical condition of the monument as found and as set or reset: \_\_\_\_\_

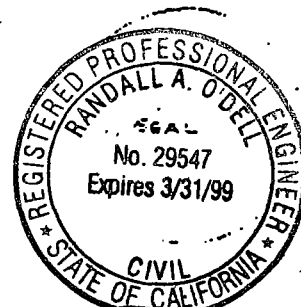
Set brass disk "City of Ripon" in concrete <sup>in</sup> mon. well.

Set punch mark and stamped R.C.E. 29547

## SURVEYOR'S STATEMENT

This Corner Record was prepared by me or under my direction in conformance with the Land Surveyors' Act on October 27, 1995.

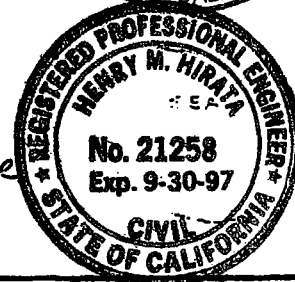
Signed Randall O'Dell L.S. or R.C.E. Number 29547  
 Randall O'Dell



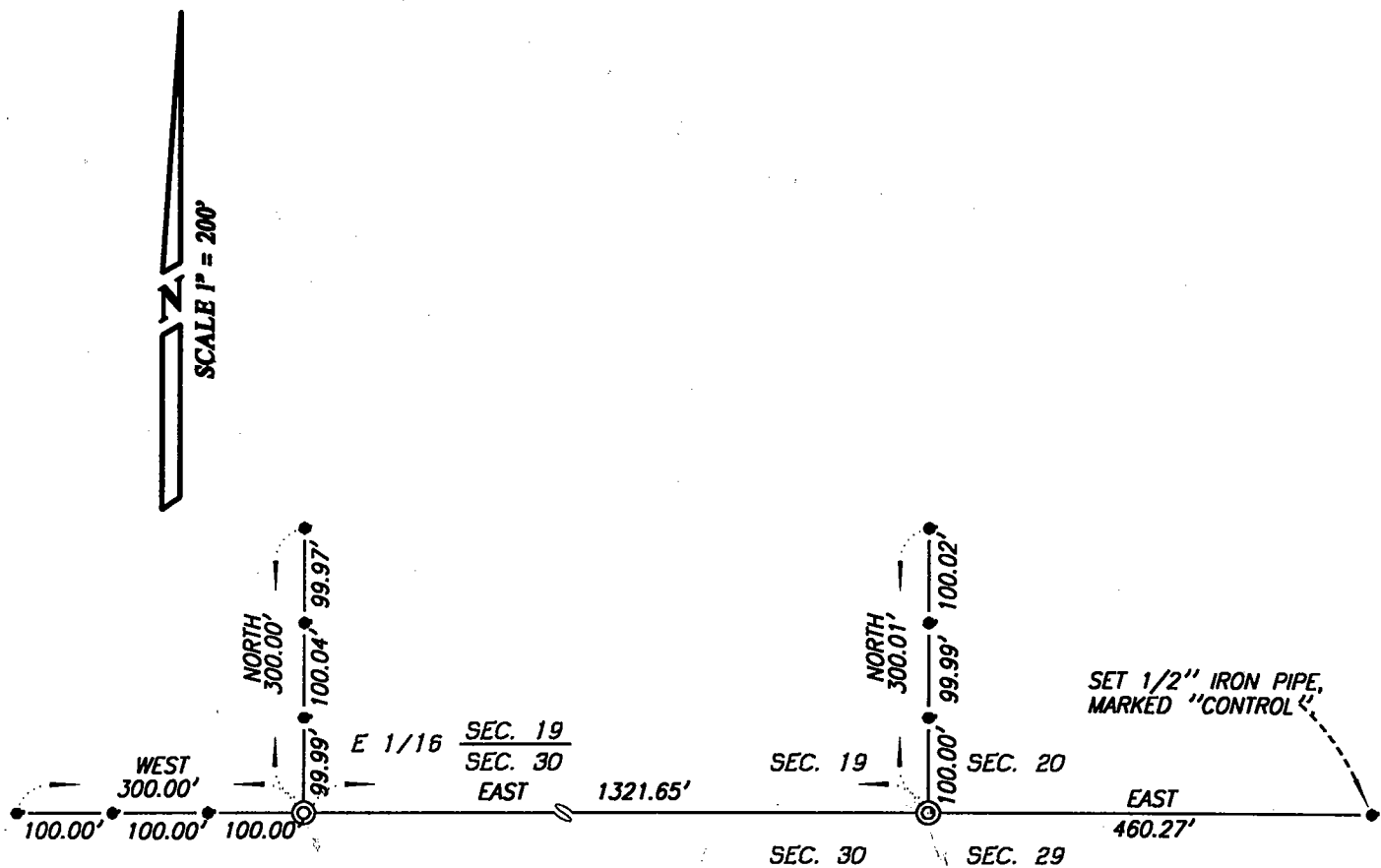
## COUNTY SURVEYOR'S STATEMENT

This Corner Record was received October 28, 1995 and examined and filed November 7, 1995.

Signed Henry M. Hirata Title COUNTY SURVEYOR



County Surveyor's Comment \_\_\_\_\_



### LEGEND:

- FD. P.K. NAIL AS SHOWN
- ⊙ SET BRASS DISK MARKED "CITY OF RIPON" IN CONC., IN MONUMENT WELL, TAGGED R.C.E 29547. ORIGINAL MONUMENT WAS DESTROYED DURING ROAD CONSTRUCTION.

S.J.C.R. DENOTES SAN JOAQUIN COUNTY RECORDS.  
 R.S. DENOTES RECORD OF SURVEY, BOOK-PAGE, S.J.C.R.  
 FD. DENOTES FOUND.

SCALE : 1" = 200'

DRAWN BY : M. JONES

FILE : 2120C.DWG

DATE : OCT. 27, 1995



## O'Dell Engineering

1101 M St. Suite 1 Modesto, CA 95354  
 (209) 571-1765 FAX: (209) 571-2466