

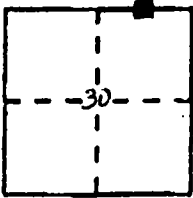
CORNER RECORD

Document Number CR-95-020

City of Ripon

County of San Joaquin, California

Brief Legal Description E 1/16 Sec 19 Sec 30 T.2.S., R.8.E., M.D. B.&M.



CORNER TYPE

Government Corner  Control   
Meander  Property   
Rancho  Other   
Date of Survey October 2, 1995

COORDINATES  
(Optional)

N. \_\_\_\_\_  
E. \_\_\_\_\_  
Zone \_\_\_\_\_ Datum \_\_\_\_\_  
Elev. \_\_\_\_\_

Corner - Left as found  Found and tagged  Established  Reestablished  Rebuilt

Identification and type of corner found: Evidence used to identify or procedure used to establish or reestablish the corner: Found reference P.K nails (as shown on Diagram Sheet 2) at 100 foot intervals West and North, 300 feet in each direction  
Re-establish using these P.K reference nails.  
Bolt and washer was destroyed during road construction.

A description of the physical condition of the monument as found and as set or reset: \_\_\_\_\_  
Set brass disk "City of Ripon" in concrete <sup>in</sup> monument well.  
Set punch mark and stamped R.C.E. 29547

SURVEYOR'S STATEMENT

This Corner Record was prepared by me or under my direction in conformance with the Land Surveyors' Act on October 27, 1995.

Signed Randall O'Dell L.S. or (R.C.E.) Number 29547  
Randall O'Dell



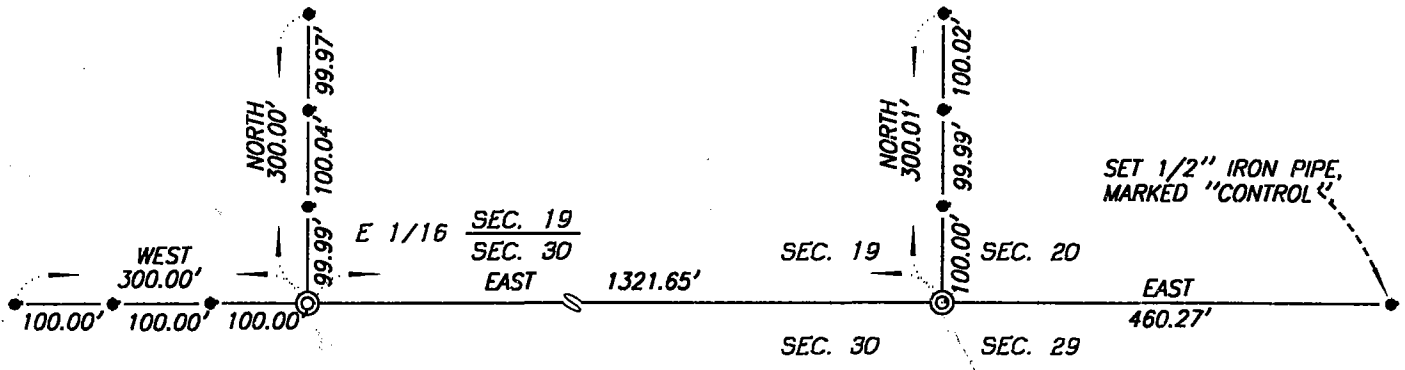
COUNTY SURVEYOR'S STATEMENT

This Corner Record was received October 28, 1995 and examined and filed November 7, 1995.

Signed Henry M. Hirata Title COUNTY SURVEYOR




County Surveyor's Comment \_\_\_\_\_



**LEGEND:**

- FD. P.K. NAIL AS SHOWN
  - ⊙ SET BRASS DISK MARKED "CITY OF RIPON" IN CONC., IN MONUMENT WELL, TAGGED R.C.E 29547. ORIGINAL MONUMENT WAS DESTROYED DURING ROAD CONSTRUCTION.
- S.J.C.R. DENOTES SAN JOAQUIN COUNTY RECORDS.  
 R.S. DENOTES RECORD OF SURVEY, BOOK-PAGE, S.J.C.R.  
 FD. DENOTES FOUND.

SCALE : 1" = 200'		<b>O'Dell Engineering</b>
DRAWN BY : M. JONES		1101 M St. Suite 1 Modesto, CA 95354
FILE : 2120C.DWG		(209) 571-1765 FAX: (209) 571-2466
DATE : OCT. 27, 1995		