

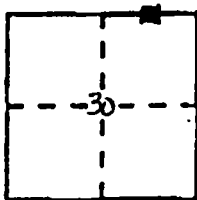
CORNER RECORD

Document Number CR-95-019

City of Ripon

County of San Joaquin, California

Brief Legal Description E 1/16 Sec 19 Sec 30 T.2.S., R.8.E., M.D. B.&M.



CORNER TYPE

Government Corner Control
 Meander Property
 Rancho Other
 Date of Survey July 7, 1995

COORDINATES (Optional)

N. _____
 E. _____
 Zone _____ Datum _____
 Elev. _____

Corner - Left as found Found and tagged Established Reestablished Rebuilt

Identification and type of corner found: Evidence used to identify or procedure used to establish or reestablish the corner: Found bolt and washer identified as 1/4-1/4 section corner of Section 30, T.2.S., R.8.E., M.D. B.&M. in Book 32 of Surveys at page 170, San Joaquin County Records.

A description of the physical condition of the monument as found and as set or reset: Found bolt and washer. Set reference P.K nails at 100 foot intervals (as shown in Diagram Sheet 2) West and North for 300 feet.

SURVEYOR'S STATEMENT

This Corner Record was prepared by me or under my direction in conformance with the Land Surveyors' Act on October 27, 1995.

Signed Randall O'Dell L.S. or (R.C.E.) Number 29547
 Randall O'Dell



COUNTY SURVEYOR'S STATEMENT

This Corner Record was received October 28, 1995 and examined and filed November 7, 1995.

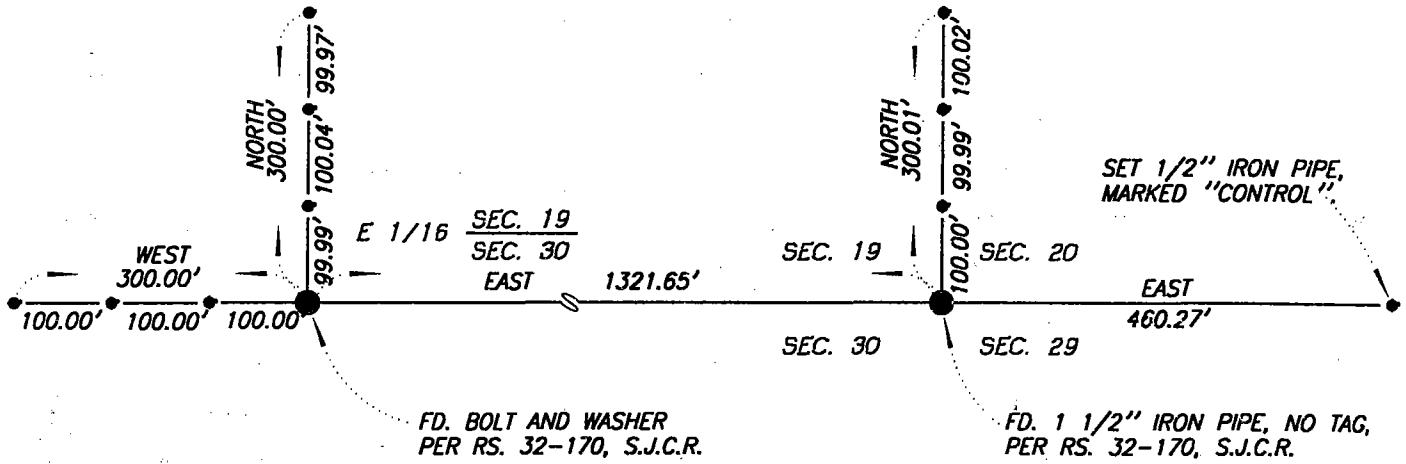
Signed Henry M. Hirtz Title COUNTY SURVEYOR



County Surveyor's Comment _____

SCALE 1" = 200'

T.2 S., R.8 E., M.D.B. & M.



LEGEND:

- SET P.K. NAIL AS SHOWN
- FOUND MONUMENT AS NOTED.
- S.J.C.R. DENOTES SAN JOAQUIN COUNTY RECORDS.
- R.S. DENOTES RECORD OF SURVEY, BOOK-PAGE, S.J.C.R.
- FD. DENOTES FOUND.

SCALE : 1" = 200'

DRAWN BY : M. JONES

FILE : 2120C.DWG

DATE : OCT. 27, 1995



O'Dell Engineering

1101 M St. Suite 1 Modesto, CA 95354
 (209) 571-1765 FAX: (209) 571-2466