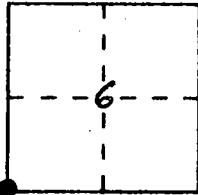


CORNER RECORD

Document Number CR-95-001
City of MANTECA County of SAN JOAQUIN, California

Brief Legal Description S.W. CORNER OF SEC 6, T.2S., R.6E7E, M.D. M.



CORNER TYPE

Government Corner Control
Meander Property
Rancho Other
Date of Survey _____

**COORDINATES
(Optional)**

N. _____
E. _____
Zone _____ Datum _____
Elev. _____

Corner — Left as found Found and tagged Established Reestablished Rebuilt

Identification and type of corner found: Evidence used to identify or procedure used to establish or reestablish the corner: CALIFORNIA DIVISION OF HIGHWAYS BRASS CAP W/PUNCH MARK IN WELL MONUMENT

A description of the physical condition of the monument as found and as set or reset: FOUND MONUMENT IS IN GOOD PHYSICAL CONDITION, BUT MAY BE DESTROYED BY CONSTRUCTION

SURVEYOR'S STATEMENT

This Corner Record was prepared by me or under my direction in conformance with the Land Surveyors' Act on JAN 20th, 1995.

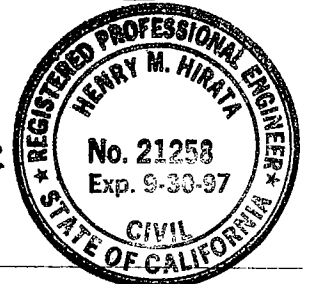
Signed Peter P Hernandez L.S. or R.C.E. Number 6949
Expires 9-30-97



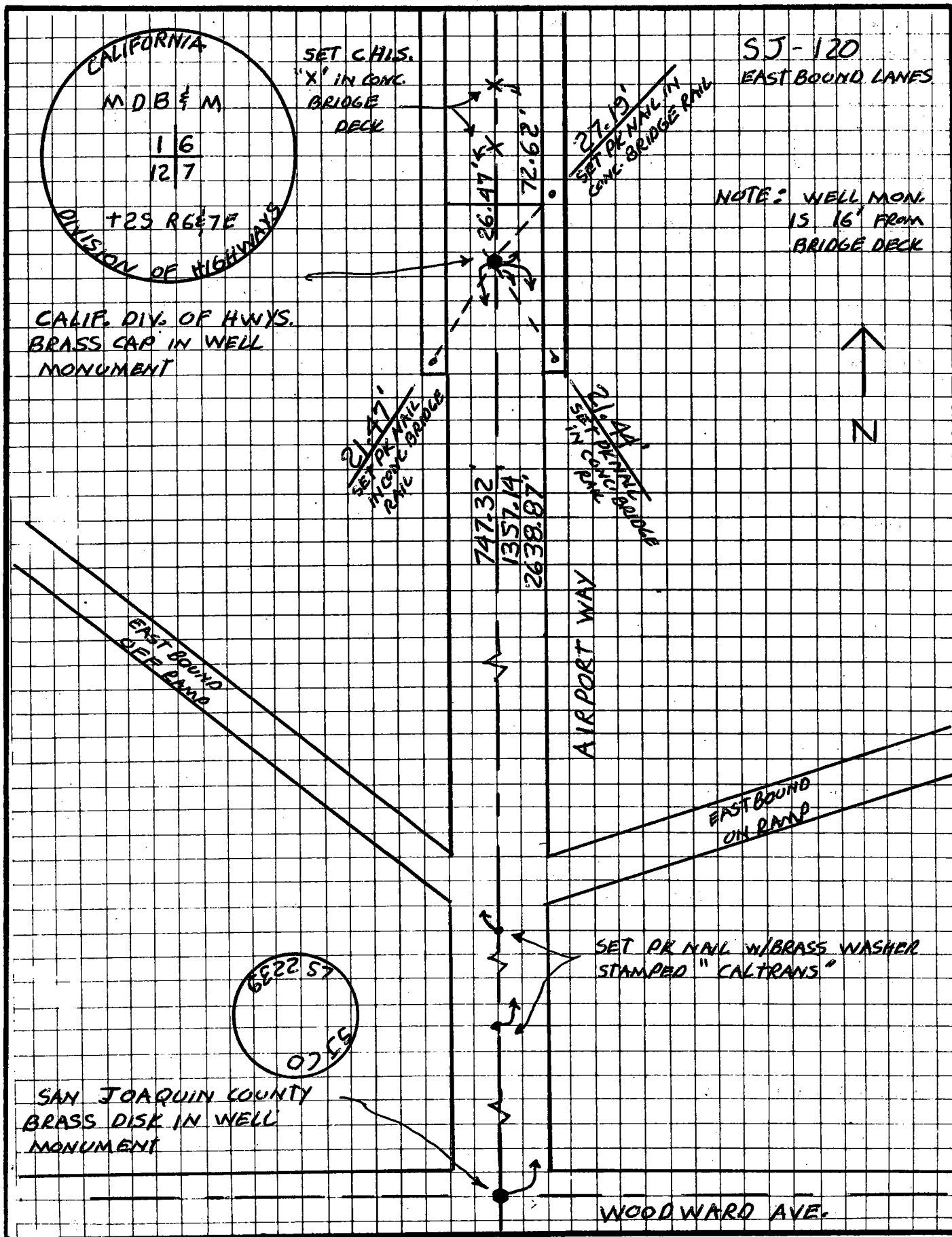
COUNTY SURVEYOR'S STATEMENT

This Corner Record was received JANUARY 30, 1995 and examined and filed FEBRUARY 6, 1995.

Signed Henry M. Hirata Title COUNTY SURVEYOR



County Surveyor's Comment _____



SET CHIS.
"X" IN CONC.
BRIDGE
DECK

SJ-120
EAST BOUND LANES

NOTE: WELL MON.
15 16' FROM
BRIDGE DECK

CALIF. DIV. OF HWYS.
BRASS CAP IN WELL
MONUMENT

27.19'
SET PR NAIL IN
CONC. BRIDGE PNL

27.19'
SET PR NAIL IN
CONC. BRIDGE PNL

747.32'
1357.14'
2638.87'

AIRPORT WAY

EAST BOUND
OFF RAMP

EAST BOUND
ON RAMP

SET PR NAIL W/BRASS WASHER
STAMPED "CALTRANS"

6E22 57
0755

SAN JOAQUIN COUNTY
BRASS DISK IN WELL
MONUMENT

WOODWARD AVE.