

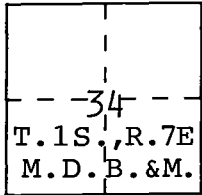
CORNER RECORD

Document Number CR-94-011

City of MANTECA

County of SAN JOAQUIN, California

Brief Legal Description LOT 8, SPRING MEADOWS UNIT NO. 1, MAPS & PLATS VOLUME 28, PAGE 74, SAN JOAQUIN COUNTY RECORDS.



CORNER TYPE

Government Corner Control
 Meander Property
 Rancho Other
 Date of Survey 10/6/94

COORDINATES (Optional)

N. _____
 E. _____
 Zone _____ Datum _____
 Elev. _____

Corner — Left as found Found and tagged Established Reestablished Rebuilt

Identification and type of corner found: Evidence used to identify or procedure used to establish or reestablish the corner:
I FOUND THE SOUTHEAST CORNER OF LOT 9 AND THE REAR CORNER OF LOT 6 & 7.
I PRORATED BETWEEN THEM TO RE-SET THE REAR CORNERS OF LOT 8. I FOUND A
CHISELED CROSS ON A 4.00' OFFSET AT THE FRONT LOT CORNER OF LOTS 6 & 7
AND AT THE POINT OF REVERSE CURVE IN LOT 8. I ESTABLISHED THE ACTUAL
FRONT LOT CORNER BY PRORATION AND SET A WITNESS CORNER ON A 4.00' OFFSET.

A description of the physical condition of the monument as found and as set or reset: _____
I SET A LEAD PLUG & TAG L.S. 4450 WITNESS CORNER IN THE SIDEWALK AND
I SET A 3/4" X 30" IRON PIPE TAGGED L.S. 4450.

SURVEYOR'S STATEMENT

This Corner Record was prepared by me or under my direction in conformance with the Land Surveyors' Act on NOVEMBER 11, 1994

Signed Michael L. Quarantoni L.S. or R.C.E.# Number 4450



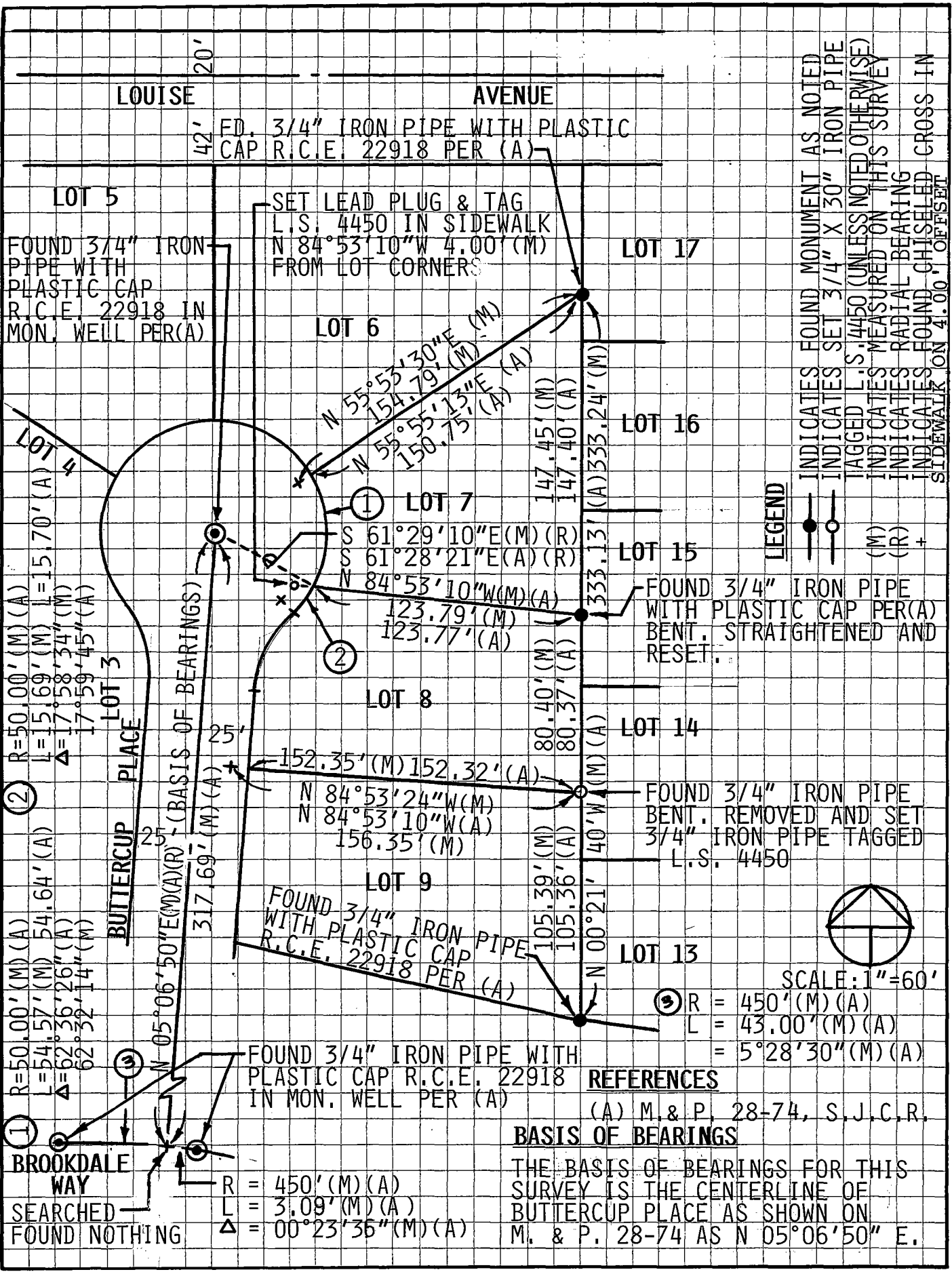
COUNTY SURVEYOR'S STATEMENT

This Corner Record was received DECEMBER 28, 1994 and examined and filed January 3, 1995

Signed Henry M. Hirata Title COUNTY SURVEYOR



County Surveyor's Comment _____



LOUISE AVENUE

42' FD. 3/4" IRON PIPE WITH PLASTIC CAP R.C.E. 22918 PER (A)

LOT 5
FOUND 3/4" IRON PIPE WITH PLASTIC CAP R.C.E. 22918 IN MON. WELL PER(A)

SET LEAD PLUG & TAG L.S. 4450 IN SIDEWALK N 84°53'10"W 4.00'(M) FROM LOT CORNERS

LOT 17

LOT 6

LOT 16

LOT 15

FOUND 3/4" IRON PIPE WITH PLASTIC CAP PER(A) BENT, STRAIGHTENED AND RESET.

LOT 8

LOT 14

FOUND 3/4" IRON PIPE BENT, REMOVED AND SET 3/4" IRON PIPE TAGGED L.S. 4450

LOT 9

LOT 13

FOUND 3/4" IRON PIPE WITH PLASTIC CAP R.C.E. 22918 IN MON. WELL PER (A)

REFERENCES

(A) M. & P. 28-74, S. J. C. R.

BASIS OF BEARINGS

THE BASIS OF BEARINGS FOR THIS SURVEY IS THE CENTERLINE OF BUTTERCUP PLACE AS SHOWN ON M. & P. 28-74 AS N 05°06'50" E.

LEGEND

- INDICATES FOUND MONUMENT AS NOTED
- INDICATES SET 3/4" X 30" IRON PIPE
- TAGGED L.S. 4450 (UNLESS NOTED OTHERWISE)
- INDICATES MEASURED ON THIS SURVEY
- INDICATES RADIAL BEARING
- INDICATES FOUND CHISELED CROSS IN SIDEWALK ON 4.00' OFFSET



SCALE: 1" = 60'

③ R = 450'(M)(A)
L = 43.00'(M)(A)
Δ = 5°28'30"(M)(A)

② R=50.00'(M)(A)
L=15.69'(M) L=15.70'(A)
Δ=17°58'34"(M)
17°59'45"(A)

① R=50.00'(M)(A)
L=54.57'(M) 54.64'(A)
Δ=62°36'26"(A)
62°32'14"(M)

R = 450'(M)(A)
L = 3.09'(M)(A)
Δ = 00°23'35"(M)(A)