

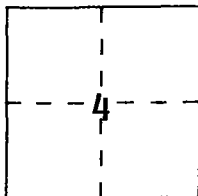
CORNER RECORD

Document Number CR-94-010

City of ESCALON

County of SAN JOAQUIN, California

Brief Legal Description LOT 23 MELROSE PARK MAPS & PLATS 13-49, S.J.C.R.



T. 2S.,
R. 9E.,
M.D.B. & M.

CORNER TYPE

- Government Corner Control
 Meander Property
 Rancho Other
 Date of Survey _____

COORDINATES (Optional)

N. _____
E. _____
Zone _____ Datum _____
Elev. _____

Corner — Left as found Found and tagged Established Reestablished Rebuilt

Identification and type of corner found: Evidence used to identify or procedure used to establish or reestablish the corner:
ALL FOUR BLOCK CORNERS AS SHOWN ON M. & P. 13-59 WERE FOUND. THE FRONT LOT CORNER WAS SET AT A RECORD DISTANCE SINCE NO PRORATION WAS NECESSARY. THE REAR CORNER WAS PRORATED.

A description of the physical condition of the monument as found and as set or reset: _____
SET A 3/4" X 30" IRON PIPE TAGGED L.S. 4450 AT THE FRONT CORNER LOT.
SET A 3/4" X 15" IRON PIPE TAGGED L.S. 4450 AS A WITNESS CORNER FOR THE REAR CORNER OF LOT 22 AND 23.

SURVEYOR'S STATEMENT

This Corner Record was prepared by me or under my direction in conformance with the Land Surveyors' Act on NOVEMBER 10, 19 94.

Signed Michael L. Quarantoli L.S. or R.C.E. Number 4450



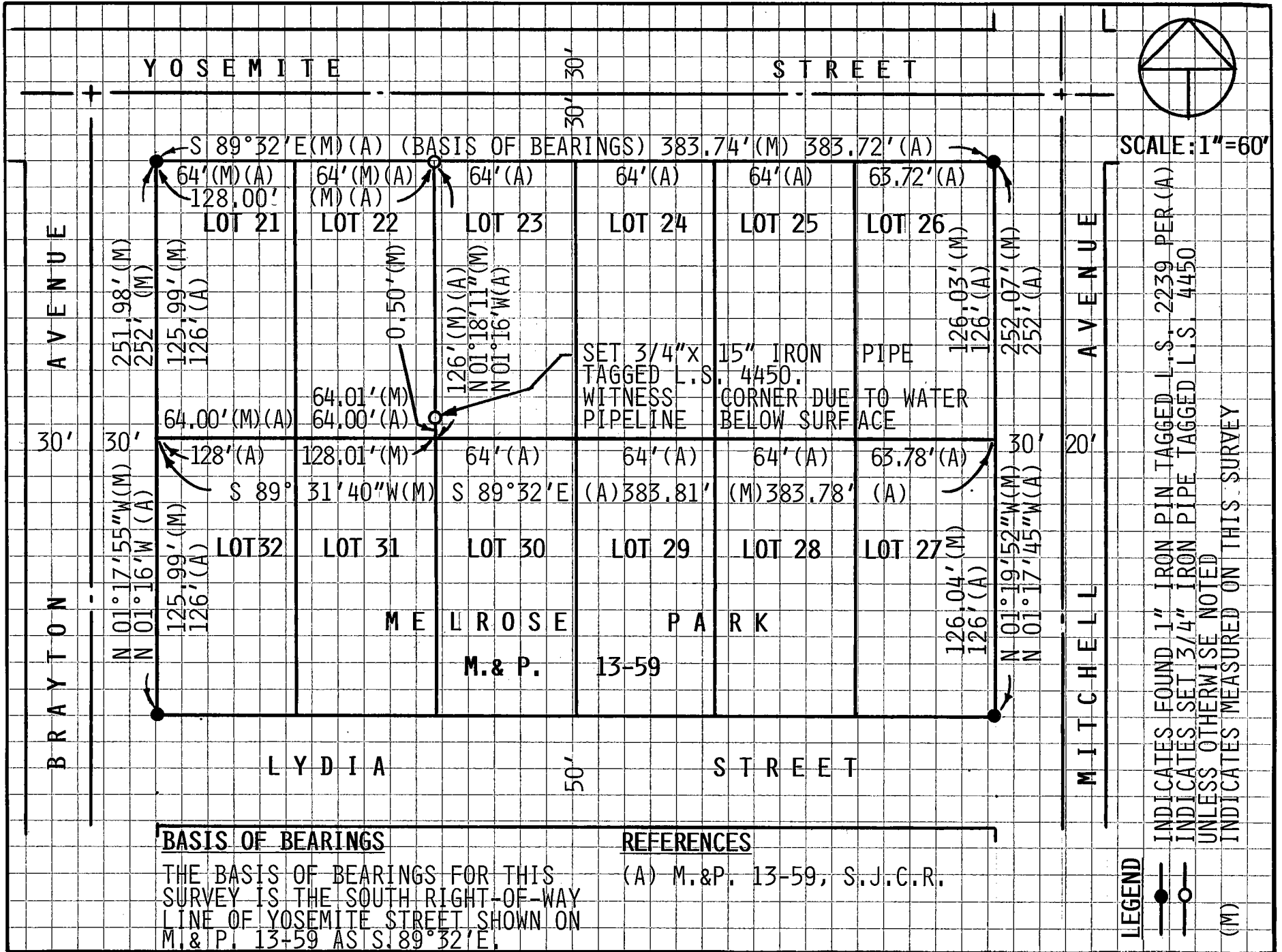
COUNTY SURVEYOR'S STATEMENT

This Corner Record was received December 1, 19 94 and examined and filed December 8, 19 94.

Signed Henry M. Hirata Title COUNTY SURVEYOR



County Surveyor's Comment _____



BASIS OF BEARINGS

THE BASIS OF BEARINGS FOR THIS SURVEY IS THE SOUTH RIGHT-OF-WAY LINE OF YOSEMITE STREET SHOWN ON M. & P. 13-59 AS S. 89° 32' E.

REFERENCES

(A) M. & P. 13-59, S.J.C.R.