

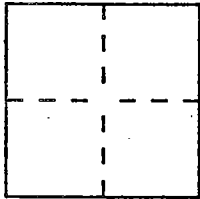
CORNER RECORD

Document Number CR-94-005

City of Stockton

County of San Joaquin, California

Brief Legal Description E. Line Lot 16, Block 1, "LAKEVIEW", MAPS & PLATS Vol. 10, pg. 76



CORNER TYPE

Government Corner Control
Meander Property
Rancho Other
Date of Survey 12-14-90

COORDINATES (Optional)

N. _____
E. _____
Zone _____ Datum _____
Elev. _____

Corner — Left as found Found and tagged Established Reestablished Rebuilt

Identification and type of corner found: Evidence used to identify or procedure used to establish or reestablish the corner: _____

see sketch

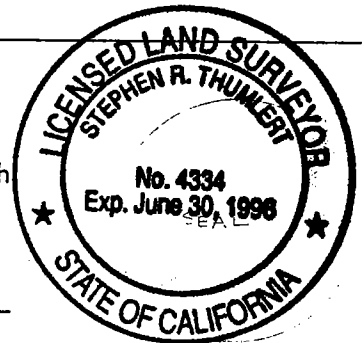
A description of the physical condition of the monument as found and as set or reset: _____

see sketch

SURVEYOR'S STATEMENT

This Corner Record was prepared by me or under my direction in conformance with the Land Surveyors' Act on MAY 18, 1994.

Signed Stephen R. Donald L.S. or R.C.E. Number 4334



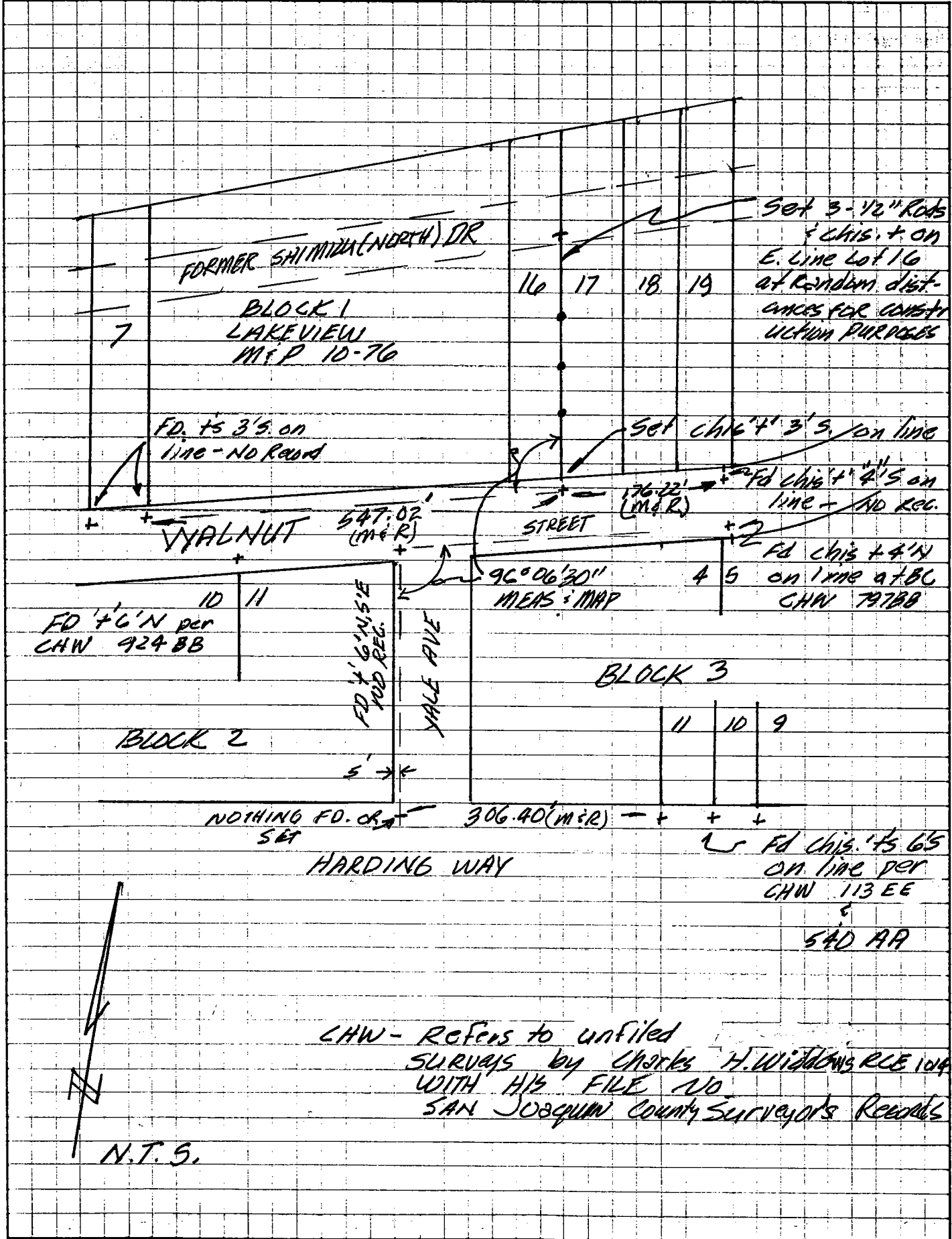
COUNTY SURVEYOR'S STATEMENT

This Corner Record was received JUNE 15 1994 and examined and filed JUNE 21, 1994.

Signed Henry M. Hirata Title COUNTY SURVEYOR



County Surveyor's Comment _____



Set 3-1/2" Rods
 & Chis. + on
 E. Line Lot 16
 at Random Dist.
 ances for Consti-
 ution Purposes

Set Chis + 3' S. on line
 Fd Chis + 4' S on
 line - NO REC.

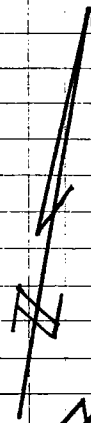
FD + 6' N per
 CHW 924 BB

Fd Chis + 4' N
 on line at BC
 CHW 797 BB

NOTHING FD. OR
 SET

Fd Chis. + 6' S
 on line per
 CHW 113 EE
 SAD AA

CHW - Refers to unfiled
 SURVEYS by Charles H. Withings RLB 104
 WITH HIS FILE NO.
 SAN JOAQUIN County Surveyors Records



N.T.S.