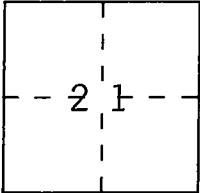


CORNER RECORD

Document Number CR-94-02

City of TRACY County of SAN JOAQUIN California  
Brief Legal Description SOUTHEAST CORNER OF LOT 58 OF "PARKER VILLAS" VOLUME 10 OF MAPS AND PLATS, PAGE 91, SAN JOAQUIN COUNTY RECORDS (SECTION 21, T.2S., R.5E., M.D.B. & M.)



CORNER TYPE

Government Corner  Control   
Meander  Property   
Rancho  Other   
Date of Survey AUGUST 19, 1993

COORDINATES (Optional)

N. \_\_\_\_\_  
E. \_\_\_\_\_  
Zone \_\_\_\_\_ Datum \_\_\_\_\_  
Elev. \_\_\_\_\_

Corner — Left as found  Found and tagged  Established  Reestablished  Rebuilt

Identification and type of corner found: Evidence used to identify or procedure used to establish or reestablish the corner:

—●— FOUND 1" IRON PIN PER M. & P. 10-91, S.J.C.R. (A)

A description of the physical condition of the monument as found and as set or reset:

—○— SET 3/4" X 30" IRON PIPE TAGGED L.S. 4450

SURVEYOR'S STATEMENT

This Corner Record was prepared by me or under my direction in conformance with the Land Surveyors' Act on AUGUST 19 19 93.

Signed Michael L. Quartali L.S. No. 4450



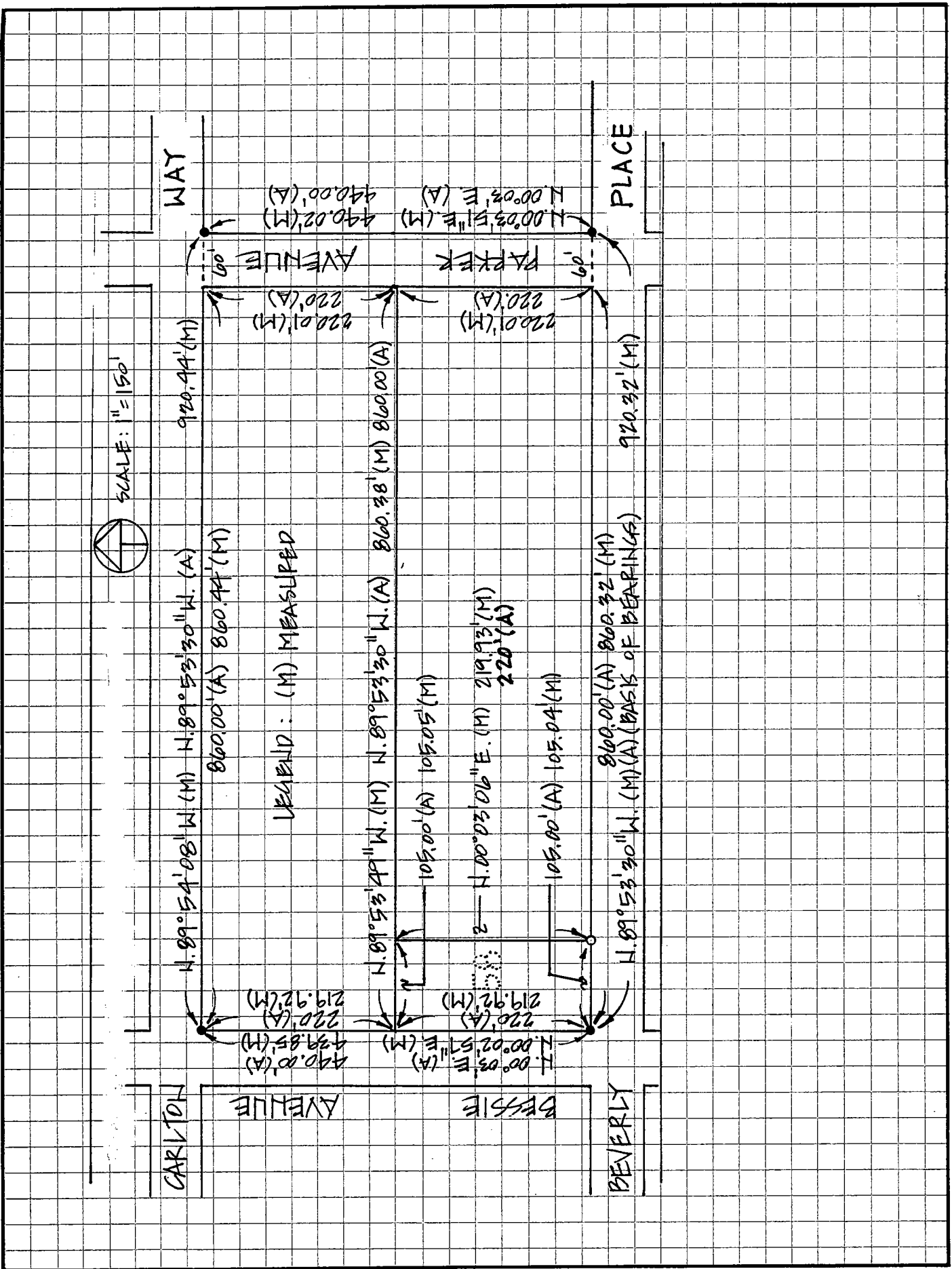
COUNTY SURVEYOR'S STATEMENT

This Corner Record was received JANUARY 4, 19 94 and examined and filed MARCH 15, 19 94.

Signed Henry M. Hirata Title COUNTY SURVEYOR



County Surveyor's Comment \_\_\_\_\_



SCALE: 1" = 150'

