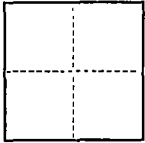


CORNER RECORD

COUNTY OF San Joaquin Section 44, C.M. Weber Grant
-T- -R- -MERIDIAN CALIFORNIA

CORNER TYPE: GOV'T. CORNER MEANDER RANCHO CONTROL OTHER

CORNER IDENTIFICATION — DATE OF VISIT _____ 19____




DATE OF FIELD SURVEY - OCTOBER 20, 1992

CORNER — LEFT AS FOUND FOUND AND TAGGED REESTABLISHED OBLITERATED CORNER REBUILT

PHYSICAL DESCRIPTION OF CORNER FOUND; EVIDENCE AND METHOD USED TO IDENTIFY OR REESTABLISH

SEE SKETCH

PHYSICAL DESCRIPTION OF MONUMENTS REBUILT OR PERPETUATED

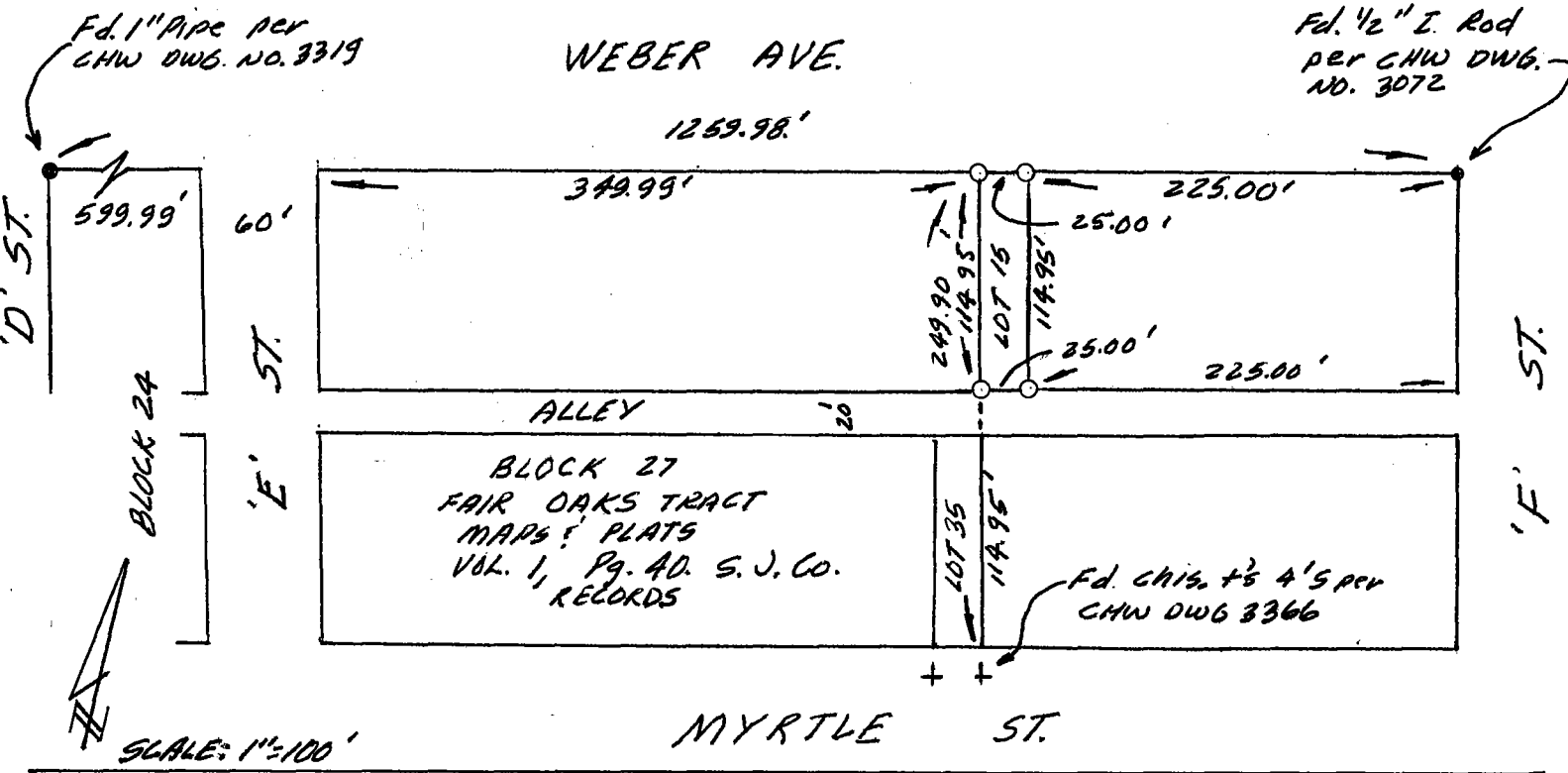
 denotes 3/4" rebar, 30" long with cap stamped L.S. 4334 at each Lot corner

CHW - denotes an unrecorded survey from the files of CHARLES H. WIDDOWS with Drawing No.

CALIFORNIA COORDINATE SYSTEM ORDER: FIRST SECOND THIRD
STATIONS USED: NGS (USC & GS) STATE COUNTY OTHER STATION _____ STATION _____
ZONE _____ ELEVATION _____ NORTHINGS (Y) _____ EASTINGS (X) _____

(Fold)

SKETCH: (Include reference tie or witness points, remarks and topo of area)

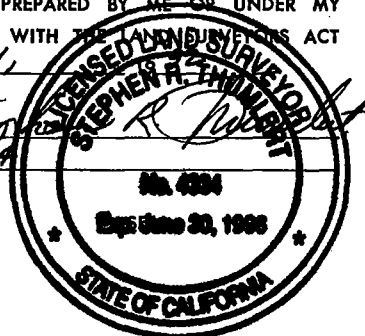


SURVEYOR'S CERTIFICATE

THIS CORNER RECORD WAS PREPARED BY ME OR UNDER MY DIRECTION IN CONFORMANCE WITH THE LAND SURVEYORS ACT ON OCTOBER 21,

SIGNED: Stephen R. Farnsworth

L.S. or R.C.E. No.: 4334



COUNTY SURVEYOR'S CERTIFICATE

THE CORNER RECORD WAS RECEIVED 10-21- 1992

AND FILED 1/13 1993

Henry M. Hirata
COUNTY SURVEYOR

92-011

DOCUMENT NO. 21258

Exp. 9-30-93

STATEMENT ON BACK OF SHEET

YES NO

