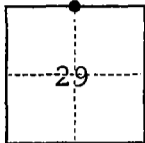


### CORNER RECORD

COUNTY OF San Joaquin T. 1 S. R. 7 E. Mt. Diablo MERIDIAN CALIFORNIA

CORNER TYPE: GOV'T. CORNER  MEANDER  RANCHO  CONTROL  OTHER

CORNER IDENTIFICATION — DATE OF VISIT June 10 19 92



N 1/4, Section 29

CORNER — LEFT AS FOUND  FOUND AND TAGGED  REESTABLISHED OBLITERATED CORNER  REBUILT

**PHYSICAL DESCRIPTION OF CORNER FOUND; EVIDENCE AND METHOD USED TO IDENTIFY OR REESTABLISH**

Found 1/2" diameter square head bolt screwed into 3/4" outside diameter, galvanized iron pipe, 2 feet long, per Book 25 of Maps and Plats, Page 59, San Joaquin County Records. Monument was site referenced with P-K nails as shown below, by City of Manteca Public Works Department, prior to being dug up as part of removal of the Tidewater and Southern Railroad tracks.

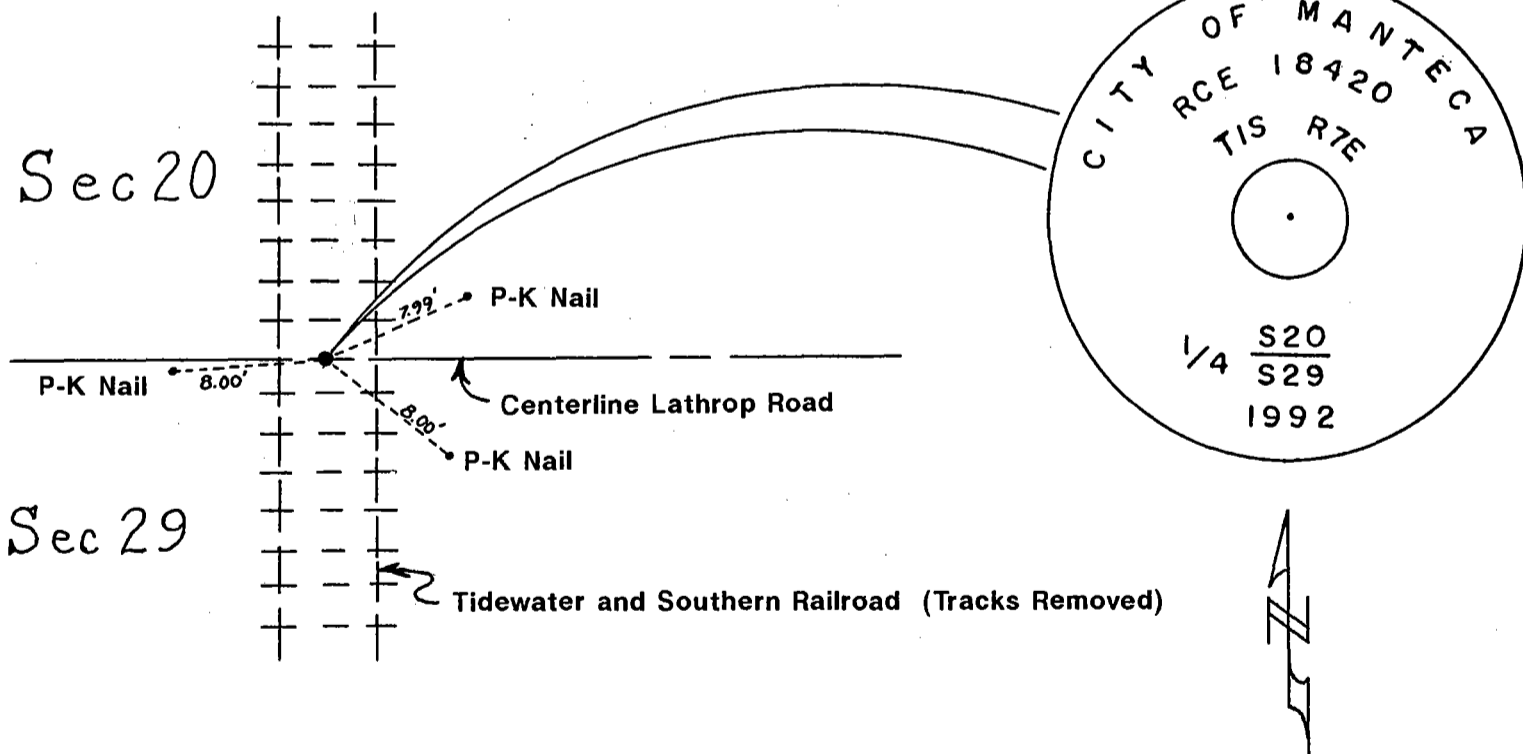
**PHYSICAL DESCRIPTION OF MONUMENTS REBUILT OR PERPETUATED**

Set 2 1/2" diameter brass washer affixed upon 5/8" diameter steel rod, stamped as shown below, in monument well. Center punch marks the corner.

CALIFORNIA COORDINATE SYSTEM ORDER: FIRST  SECOND  THIRD   
STATIONS USED: NGS (USC & GS)  STATE  COUNTY  OTHER  STATION \_\_\_\_\_ STATION \_\_\_\_\_  
ZONE \_\_\_\_\_ ELEVATION \_\_\_\_\_ NORTHINGS (Y) \_\_\_\_\_ EASTINGS (X) \_\_\_\_\_

(Fold)

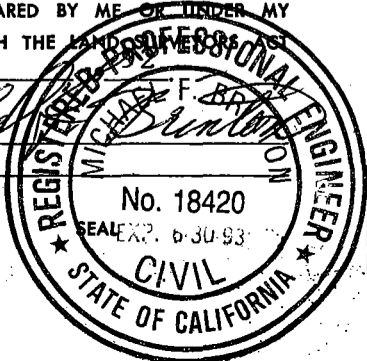
**SKETCH: (Include reference tie or witness points, remarks and topo of area)**



**SURVEYOR'S CERTIFICATE**

THIS CORNER RECORD WAS PREPARED BY ME OR UNDER MY DIRECTION IN CONFORMANCE WITH THE LAND SURVEYING ACT ON June 10

SIGNED: Michael F. Br...  
L.S. or R.C.E. No.: 18420



**COUNTY SURVEYOR'S CERTIFICATE**

THE CORNER RECORD WAS RECEIVED June 11, 19 92  
AND EXAMINED AND FILED June 13, 19 92

BY: Robert DeHamel  
TITLE: Chief Deputy County Surveyor

DOCUMENT No. CR-92-010

STATEMENT ON BACK OF SHEET YES  NO