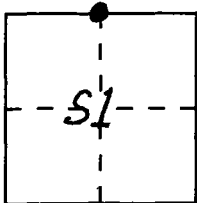


CORNER RECORD

Document Number CR-92-008

City of _____ County of SAN JOAQUIN, California

Brief Legal Description NORTH 1/4 COR. SECTION 1, T.2S., R.7E., M.D.M.



CORNER TYPE

Government Corner Control
Meander Property
Rancho Other
Date of Survey 11-19-82 and 12-13-91

COORDINATES

(Optional)
N. 473136.82
E. 1811821.56
Zone 3 Datum NAD 27
Elev. _____

Corner — Left as found Found and tagged Established Reestablished Rebuilt

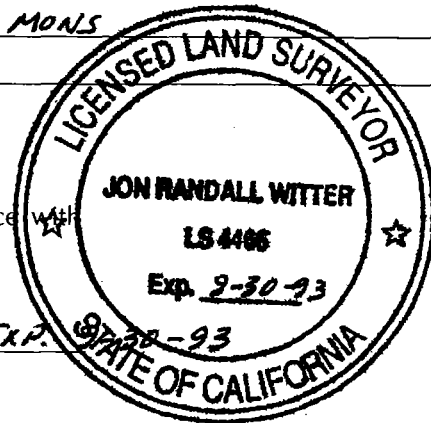
Identification and type of corner found: Evidence used to identify or procedure used to establish or reestablish the corner: 11-19-82: FD BOLT AND WASHER DN 0.5' AT 1/4 CORNER
PER RS 22-162. SET MONUMENT WELL OVER THE FOUND
BOLT

A description of the physical condition of the monument as found and as set or reset: _____
12-13-91: FD BOLT & WASHER DOWN 0.4' IN MONUMENT WELL
WITHOUT LID. BOLT SLIGHTLY BURIED-OVER, COVERED
WITH MUD AND DEBRIS. SET REFERENCE MONS

SURVEYOR'S STATEMENT

This Corner Record was prepared by me or under my direction in conformance with the Land Surveyors Act on 2-21-92 19 _____.

Signed [Signature] L.S. or R.C.E. Number 4466 EXP. 2-30-93



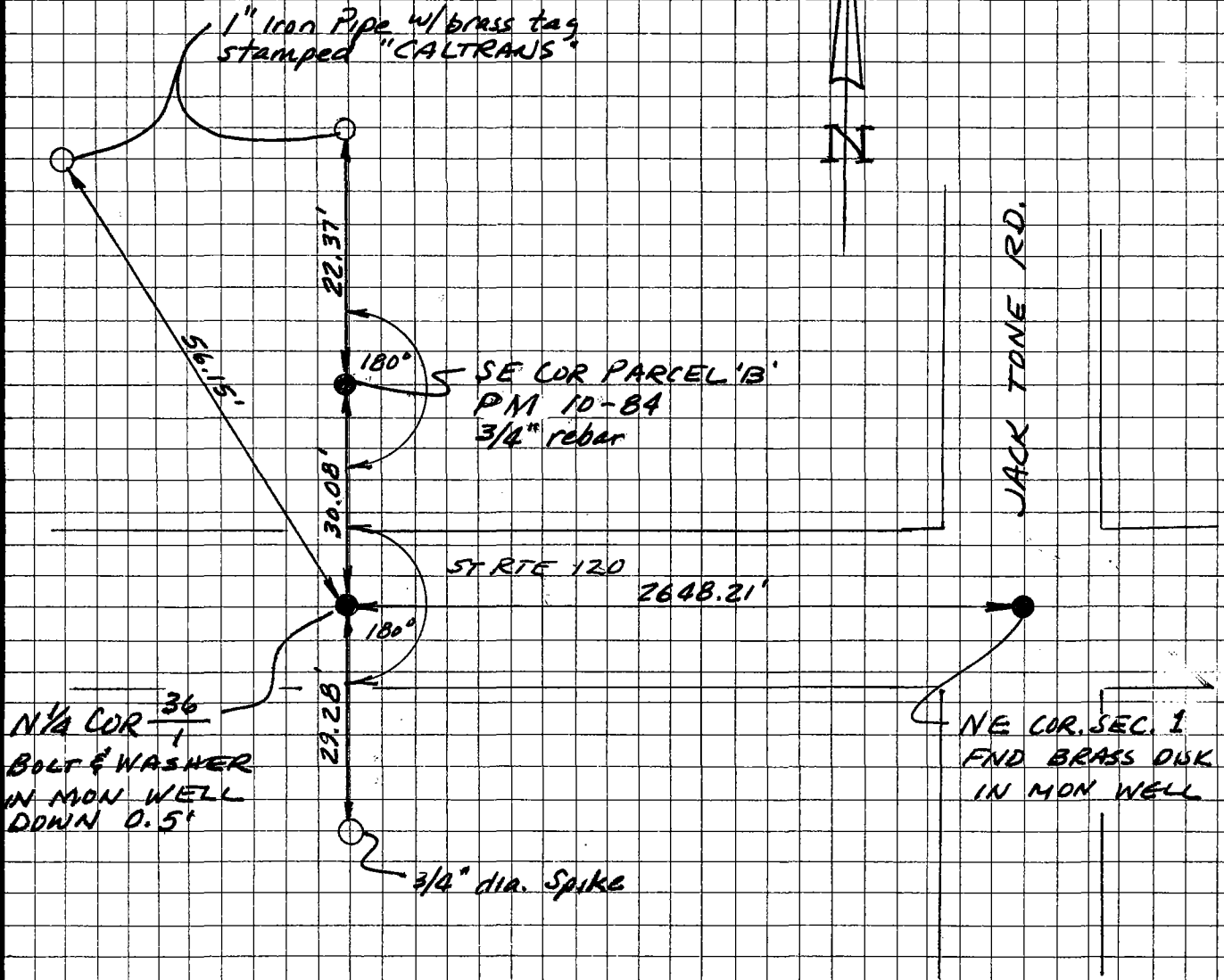
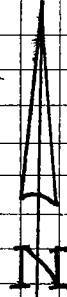
COUNTY SURVEYOR'S STATEMENT

This Corner Record was received February 25, 19 92 and examined and filed March 2, 19 92.

Signed [Signature] Title Chief Deputy County Surveyor

County Surveyor's Comment _____

T1S R7E
 $\frac{1}{4}$ $\frac{36}{1}$
 T2S R7E



LEGEND

- FOUND MON. AS DESCRIBED
- SET MON. AS DESCRIBED