

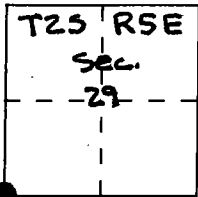
CORNER RECORD

Document Number CR-92-006

City of Tracy, California

County of San Joaquin, California

Brief Legal Description Southwest corner of Section 29, T2S, R5E, M.D.M.



CORNER TYPE

- Government Corner
- Meander
- Rancho
- Date of Survey \_\_\_\_\_
- Control
- Property
- Other

COORDINATES (Optional)

N. \_\_\_\_\_  
 E. \_\_\_\_\_  
 Zone \_\_\_\_\_ Datum \_\_\_\_\_  
 Elev. \_\_\_\_\_

Corner — Left as found  Found and tagged  Established  Reestablished  Rebuilt

Identification and type of corner found: Evidence used to identify or procedure used to establish or reestablish the corner:

The southwest corner of Section 29, T2S, R5E, MDM, was found as referenced on Parcel Map 79-84-MS, filed in Book 13, page 26A, San Joaquin County Records. Reconstruction of the road will destroy this monument. This location was referenced to points outside the work area to facilitate the setting of a new monument in its place. See sketch on back.

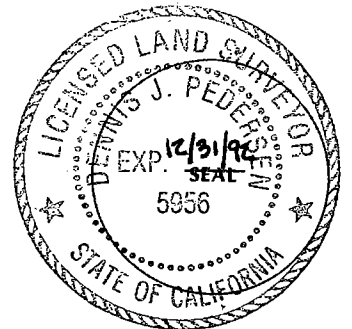
A description of the physical condition of the monument as found and as ~~set~~ reset: \_\_\_\_\_

Found at this corner was a 1" rebar in a standard monument box. Re-set at this location is a 2 1/2" brass disc set in concrete inside a standard monument box, marked as shown on the back of this card.

SURVEYOR'S STATEMENT

This Corner Record was prepared by me or under my direction in conformance with the Land Surveyors' Act on September 17 19 92.

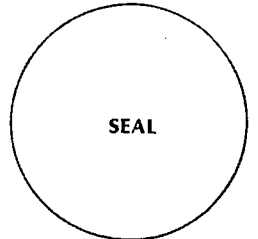
Signed Dennis J. Pedersen L.S. or R.C.E. Number LS 5956



COUNTY SURVEYOR'S STATEMENT

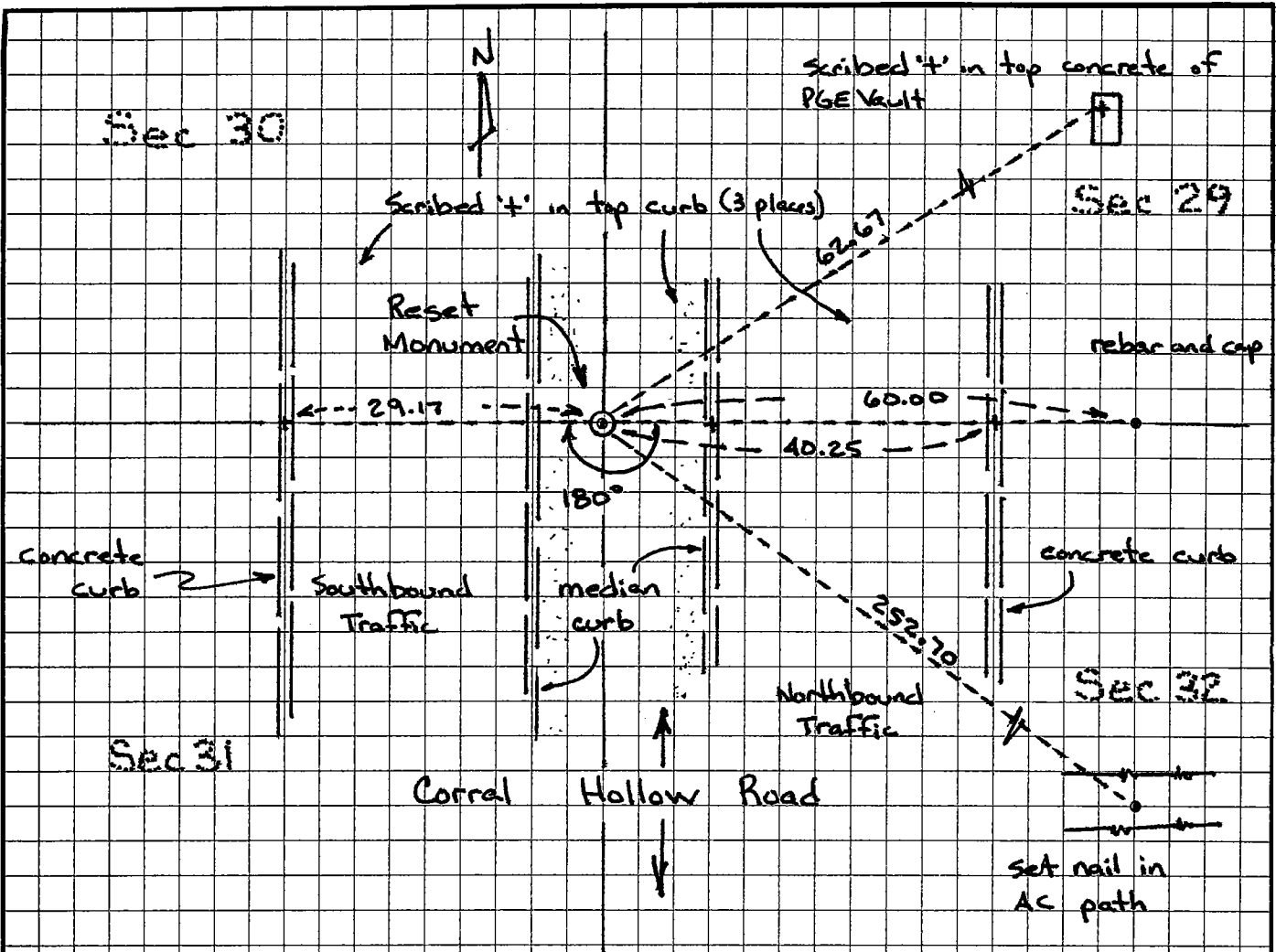
This Corner Record was received September 23, 19 92 and examined and filed September 25, 19 92.

Signed Robert Pachametak Title Chief Deputy County Surveyor

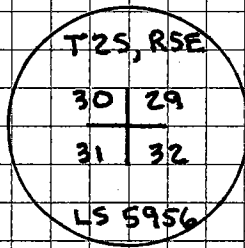


County Surveyor's Comment \_\_\_\_\_

Reference to ties on Page 2 of 2.



Monument References (No scale)



Monument Disc Markings