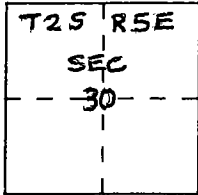


CORNER RECORD

Document Number CR-92-003

City of Tracy, California County of San Joaquin, California

Brief Legal Description GPS-4 on Tracy Modified Grid System Control Map



CORNER TYPE

- Government Corner
- Meander
- Rancho
- Date of Survey _____
- Control
- Property
- Other

COORDINATES (Optional)

N. 452256.46 *
 E. 1724789.62 *
 Zone X Datum —
 Elev. —

* Tracy Modified Grid System

Corner — Left as found Found and tagged Established Reestablished Rebuilt

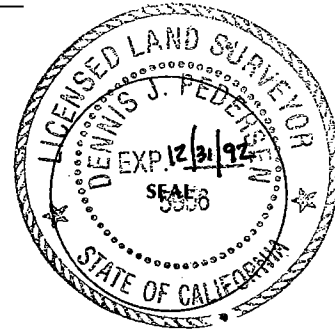
Identification and type of corner found: Evidence used to identify or procedure used to establish or reestablish the corner:
The monument identified as GPS-4 on the Record of Survey of the Global Positioning System Monumentation for the City of Tracy, recorded in Book 30, page 18, in the County of San Joaquin was found as shown on said map. Road construction would destroy this monument. The location was referenced outside the work limits for re-establishment at a later date.

A description of the physical condition of the monument as found and as set or reset:
Found at this position was a steel rod set in a standard monument box. Reset at this location is a 2 1/2" Brass disc with punch mark in a standard monument box

SURVEYOR'S STATEMENT

This Corner Record was prepared by me or under my direction in conformance with the Land Surveyors' Act on September 17 19 92.

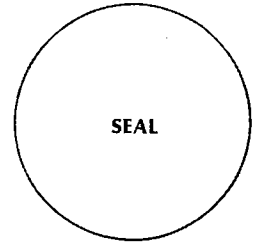
Signed Dennis J. Pedersen L.S. or R.C.E. Number LS 5956



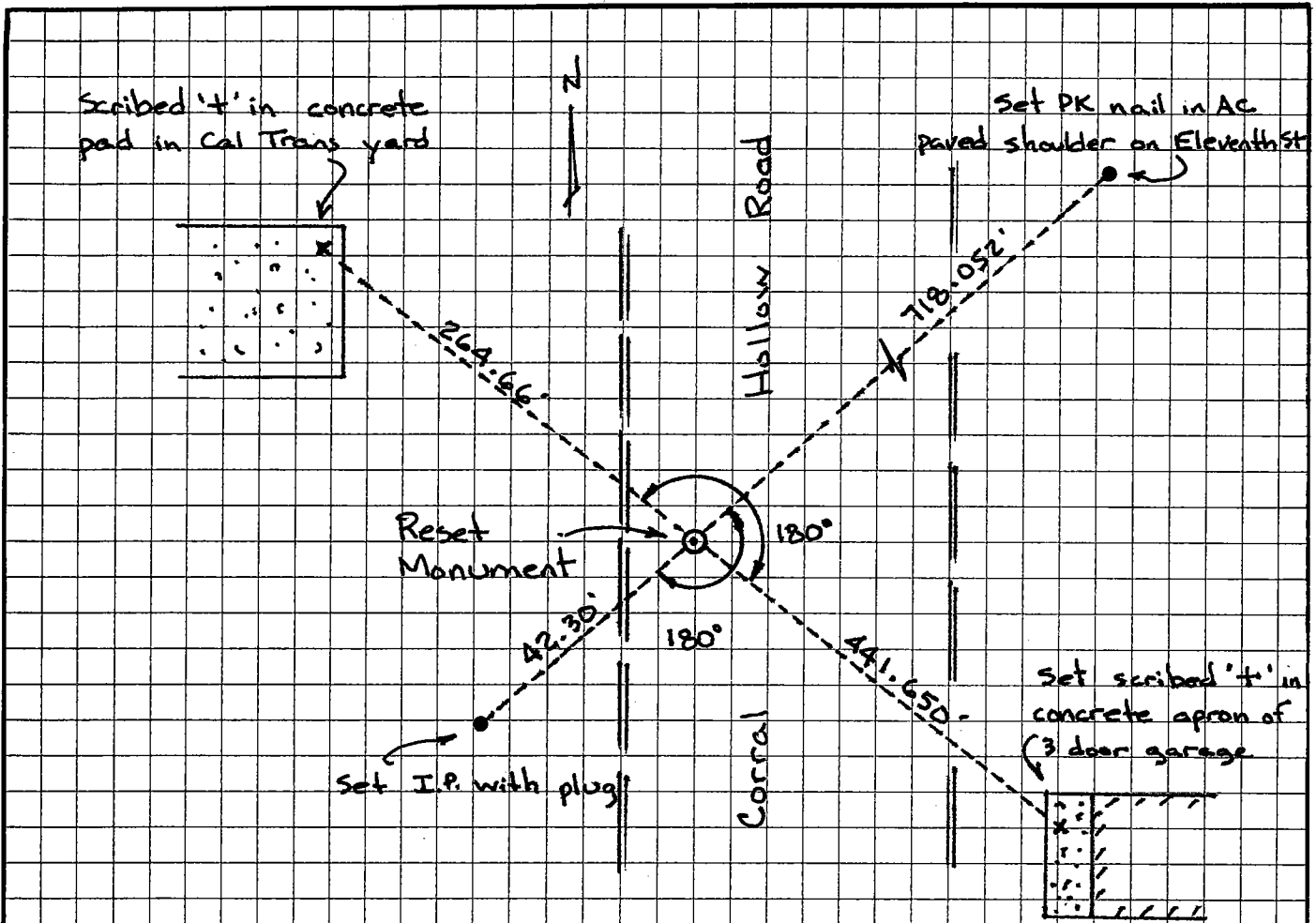
COUNTY SURVEYOR'S STATEMENT

This Corner Record was received September 23, 19 92 and examined and filed September 25, 19 92.

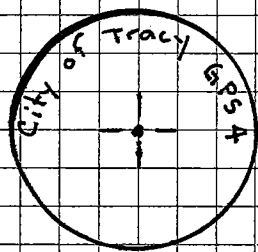
Signed Robert Debrauete Title Chief Deputy County Surveyor



County Surveyor's Comment Reference to Aes on Page 2 of 2.



Monument References (No Scale)



Monument Disc Markings