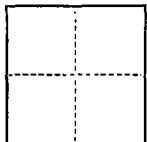


### CORNER RECORD

COUNTY OF SAN JOAQUIN T. 2N R. 7E M.D. B & 1' MERIDIAN CALIFORNIA

CORNER TYPE: GOV'T. CORNER  MEANDER  RANCHO  CONTROL  OTHER

CORNER IDENTIFICATION — DATE OF VISIT \_\_\_\_\_ 19\_\_\_\_



RESET 2 CORNERS OF THE 0.452 ACRE PARCEL SHOWN ON R.S. 13-86, BEING A PORTION OF LOTS 3 & 4, ADAHMOR MANOR, MAPS & PLATS, VOL. 14, PG. 124, SAN JOAQUIN COUNTY RECORDS

CORNER — LEFT AS FOUND  FOUND AND TAGGED  REESTABLISHED OBLITERATED CORNER  REBUILT

PHYSICAL DESCRIPTION OF CORNER FOUND; EVIDENCE AND METHOD USED TO IDENTIFY OR REESTABLISH

SEE SKETCH

PHYSICAL DESCRIPTION OF MONUMENTS REBUILT OR PERPETUATED

SEE SKETCH

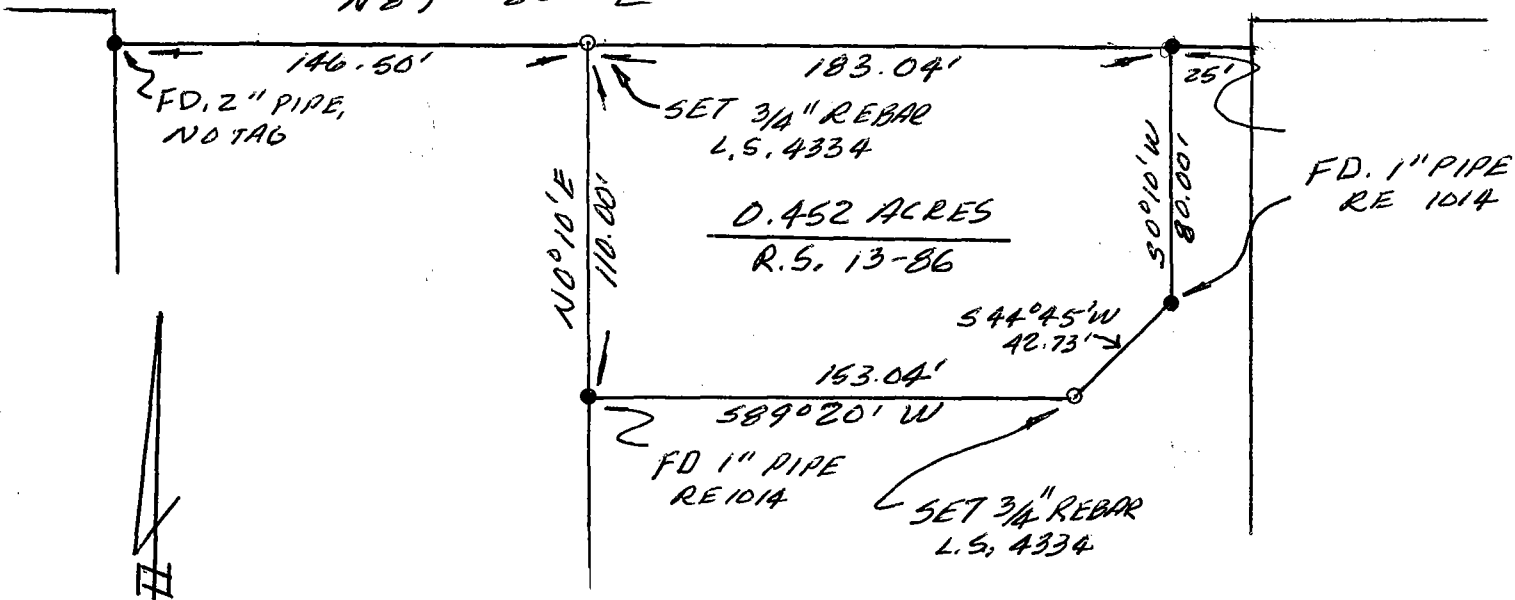
CALIFORNIA COORDINATE SYSTEM ORDER: FIRST  SECOND  THIRD   
STATIONS USED: NGS (USC & GS)  STATE  COUNTY  OTHER  STATION \_\_\_\_\_ STATION \_\_\_\_\_  
ZONE \_\_\_\_\_ ELEVATION \_\_\_\_\_ NORTHINGS (Y) \_\_\_\_\_ EASTINGS (X) \_\_\_\_\_

(Fold)

SKETCH: (Include reference tie or witness points, remarks and topo of area)

HILDRETH LANE

N 89° 20' E



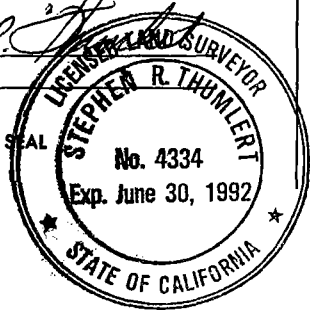
SCALE: 1" = 60'

#### SURVEYOR'S CERTIFICATE

THIS CORNER RECORD WAS PREPARED BY ME OR UNDER MY DIRECTION IN CONFORMANCE WITH THE LAND SURVEYORS ACT ON MARCH 2, 1992

SIGNED: Stephen R. Thumert

L.S. or R.C.E. No.: 4334



#### COUNTY SURVEYOR'S CERTIFICATE

THE CORNER RECORD WAS RECEIVED MARCH 4, 1992 AND EXAMINED AND FILED MARCH 9, 1992

BY: Robert Debrauer

TITLE: Chief Deputy County Surveyor

DOCUMENT No. CR-92-001

STATEMENT ON BACK OF SHEET

YES  NO