

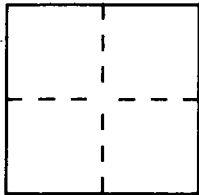
**CORNER RECORD**

Document Number CR-91-013

City of STOCKTON

County of SAN JOAQUIN, California

Brief Legal Description PROPERTY CORNER & REFERENCE AT N.E. CORNER WILSON & WASHINGTON ST



**CORNER TYPE**

**COORDINATES  
(Optional)**

Government Corner  Control   
Meander  Property   
Rancho  Other   
Date of Survey 10-23-91

N. \_\_\_\_\_  
E. \_\_\_\_\_  
Zone \_\_\_\_\_ Datum \_\_\_\_\_  
Elev. \_\_\_\_\_

Corner — Left as found  Found and tagged  Established  Reestablished  Rebuilt

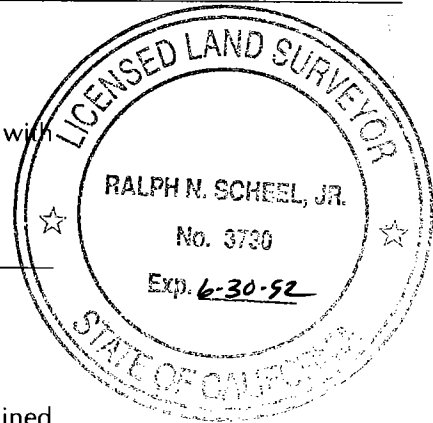
Identification and type of corner found: Evidence used to identify or procedure used to establish or reestablish the corner: FOUND "X" CHIPPED INTO WALK AS NOTED ON PG. 2 - NO REFERENCES FOUND

A description of the physical condition of the monument as found and as set or reset: MONUMENTS IN GOOD CONDITION ON RECENTLY PLACED CONCRETE.

**SURVEYOR'S STATEMENT**

This Corner Record was prepared by me or under my direction in conformance with the Land Surveyors' Act on Oct 23 1991.

Signed Ralph Scheel L.S. or R.C.E. Number L53730  
Exp 6-30-91



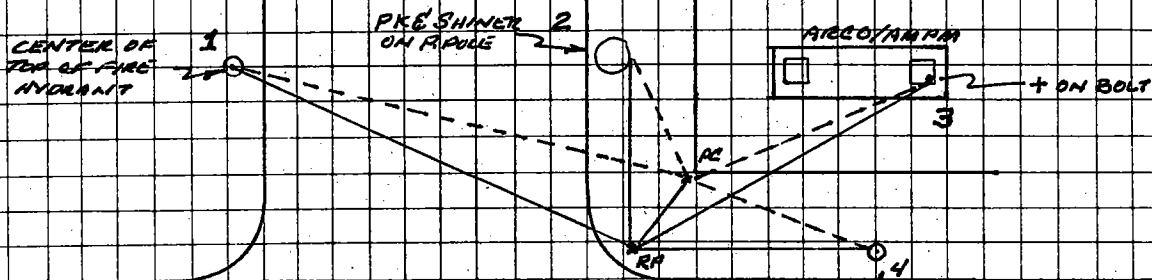
**COUNTY SURVEYOR'S STATEMENT**

This Corner Record was received December 16, 1991 and examined and filed December 23, 1991.

Signed Debra S. Dehramet Title Chief Deputy County Surveyor

County Surveyor's Comment \_\_\_\_\_

WILSON WAY



FROM REF. PT. TO

- 1 266°15'07" 30.58
- 2 351°49'31" 14.53'
- 3 38°52'01" 24.06
- 4 87°49'43" 16.94' (BASIS OF AZIMUTH)
- PIC 28°29'11" 7.53'

FROM PIC TO

- 1 261°25' — 74.84'
- 2 324°05' — 9.56'
- 3 43°35' — 16.72'
- 4 114°07' — 14.65' (BASIS OF AZIMUTH)

BRASS CAP IN WALK  
CAL. D.O.T. CM 10376

WASHINGTON ST.

