

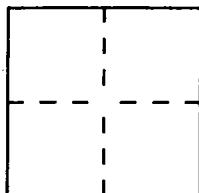
CORNER RECORD

Document Number CR-91-010

City of STOCKTON

County of SAN JOAQUIN, California

Brief Legal Description CITY MONUMENT NEAR CORNER OF LAFAYETTE & DELLA ST.



CORNER TYPE

- Government Corner
- Meander
- Rancho
- Date of Survey 10-23-91
- Control
- Property
- Other

COORDINATES (Optional)

N. not
 E. not
 Zone _____ Datum _____
 Elev. _____

Corner — Left as found Found and tagged Established Reestablished Rebuilt

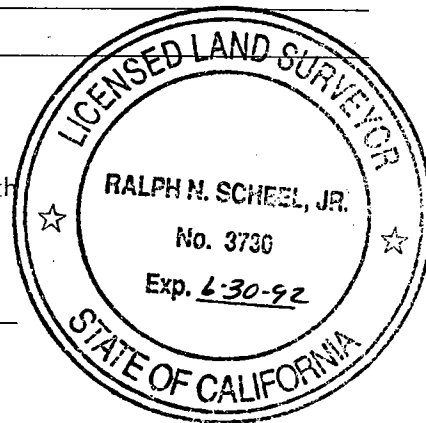
Identification and type of corner found: Evidence used to identify or procedure used to establish or reestablish the corner: FOUND CITY MONUMENT IN MON. WELL - APPEARS TO BE BOLT IN LARGER IRON OBJECT. - CITY MONUMENT

A description of the physical condition of the monument as found and as set or reset: MONUMENT IN GOOD CONDITION - WELL BROKEN & LEANING - NO COVER.

SURVEYOR'S STATEMENT

This Corner Record was prepared by me or under my direction in conformance with the Land Surveyors' Act on Oct. 23 19 91.

Signed Ralph Scheel, Jr. L.S. or R.C.E. Number LS 3730
EXP-6-30-92



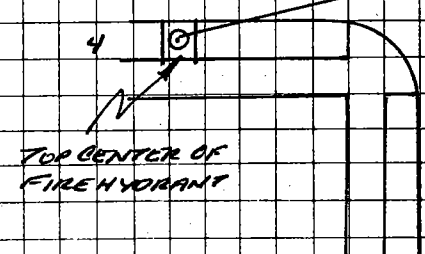
COUNTY SURVEYOR'S STATEMENT

This Corner Record was received December 16, 19 91 and examined and filed December 23, 19 91.

Signed Asst. M. Dehromek Title Chief Deputy County Surveyor

County Surveyor's Comment _____

LAFAYETTE



TOP CENTER OF
FIRE HYDRANT

DELLA

1" IRON PIPE WITH
CAL. DOT. RIW PLUG

RIW COR

5

WALK CM 104512

1

FD MONUMENT IN
WELL - SEE DESCRIPTION
CITY MONUMENT

DRG SHINER
IN T. POLE

2

3

1	20.98'
2	58.55'
3	60.12'
4	101.72'
5	20.15'

MONUMENT FOUND - APPEARS
TO BE BOLT IN TOP OF LARGER
IRON PIECE - UNABLE TO DEFINE
WHAT IN MONUMENT WELL -
DOWN 03
CITY MONUMENT