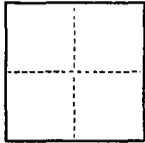


CORNER RECORD

COUNTY OF San Joaquin T. 2 S. R. 9 E. Mount Diablo MERIDIAN CALIFORNIA

CORNER TYPE: GOV'T. CORNER MEANDER RANCHO CONTROL OTHER

CORNER IDENTIFICATION — DATE OF VISIT August 31 19 91



NW 1/4 OF SECTION 4, T 2 S, R 9 E, MDM

CORNER — LEFT AS FOUND FOUND AND TAGGED REESTABLISHED OBLITERATED CORNER REBUILT

PHYSICAL DESCRIPTION OF CORNER FOUND; EVIDENCE AND METHOD USED TO IDENTIFY OR REESTABLISH

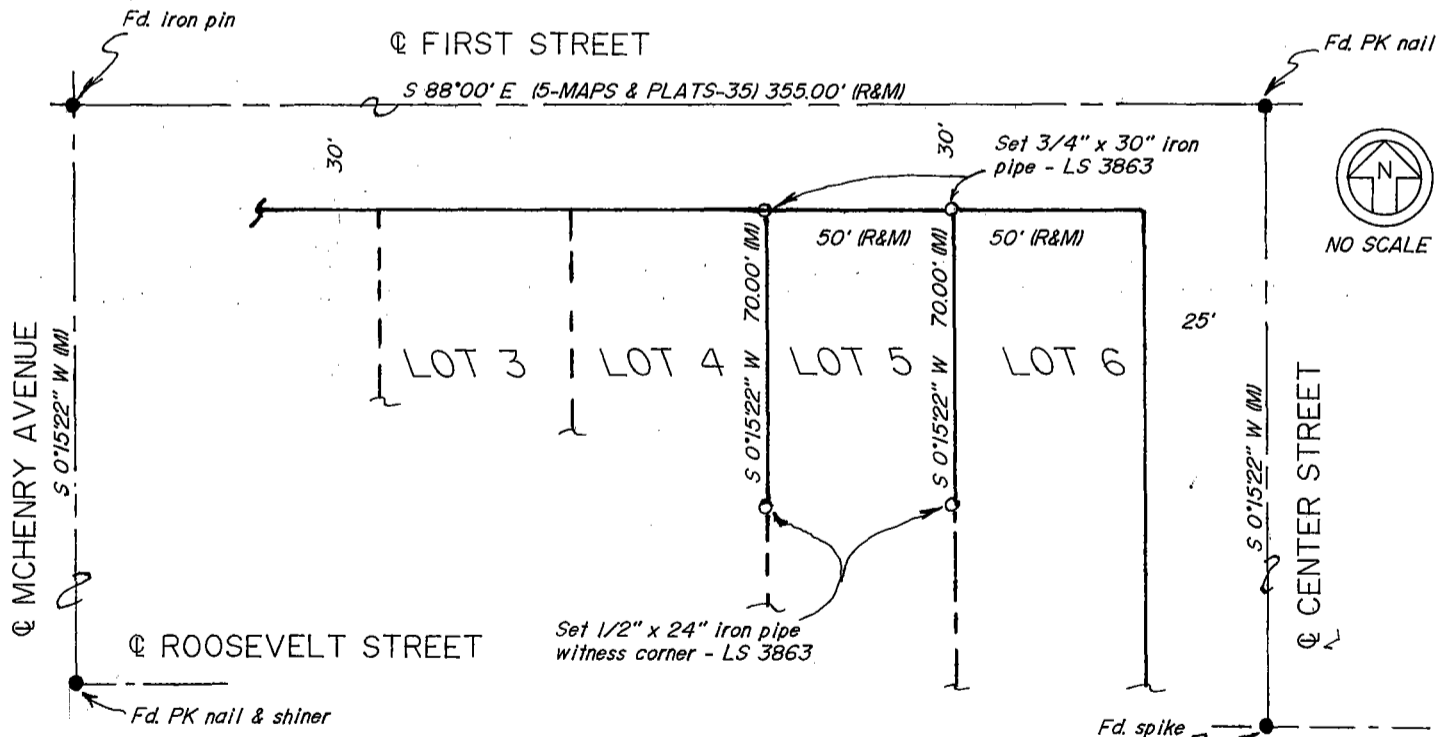
PHYSICAL DESCRIPTION OF MONUMENTS REBUILT OR PERPETUATED

Set 3/4" iron pipes at the northeast and northwest corners of Lot 5 in Block 1 of the LINDSTROM ADDITION TO ESCALON as per map recorded in Volume 5 of Maps at Page 35, San Joaquin County Records. Set 1/2" iron pipes as 70.00' witness corners as shown below.

CALIFORNIA COORDINATE SYSTEM ORDER: FIRST SECOND THIRD
STATIONS USED: NGS (USC & GS) STATE COUNTY OTHER STATION _____ STATION _____
ZONE _____ ELEVATION _____ NORTHINGS (Y) _____ EASTINGS (X) _____

(Fold)

SKETCH: (Include reference tie or witness points, remarks and topo of area)

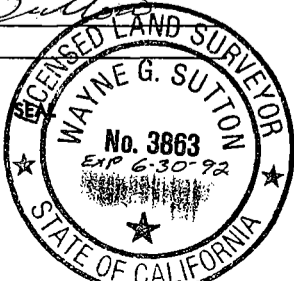


SURVEYOR'S CERTIFICATE

THIS CORNER RECORD WAS PREPARED BY ME OR UNDER MY DIRECTION IN CONFORMANCE WITH THE LAND SURVEYORS ACT ON September 1 19 91

SIGNED: Wayne G. Sutton

L.S. or R.C.E. No.: LS 3863



COUNTY SURVEYOR'S CERTIFICATE

THE CORNER RECORD WAS RECEIVED Sept. 4, 19 91 AND EXAMINED AND FILED Sept. 10, 19 91

BY: Robert Debrauer
TITLE: Chief Deputy County Surveyor

DOCUMENT No. CR-91-003

STATEMENT ON BACK OF SHEET YES NO