

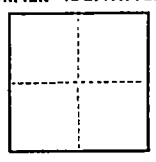
CORNER RECORD

COUNTY OF SAN JOAQUIN T. _____ R. _____ MERIDIAN SECTION 31, C.M. WEBER GRANT CALIFORNIA

CORNER TYPE: GOV'T. CORNER MEANDER RANCHO CONTROL OTHER

CORNER IDENTIFICATION — DATE OF VISIT _____ 19____

LOT 7,
BLOCK 3
PARKVIEW
MAP & PLATS VOL. 7, Pg. 9
SAN JOAQUIN CO. RECORDS



CORNER — LEFT AS FOUND FOUND AND TAGGED REESTABLISHED OBLITERATED CORNER REBUILT

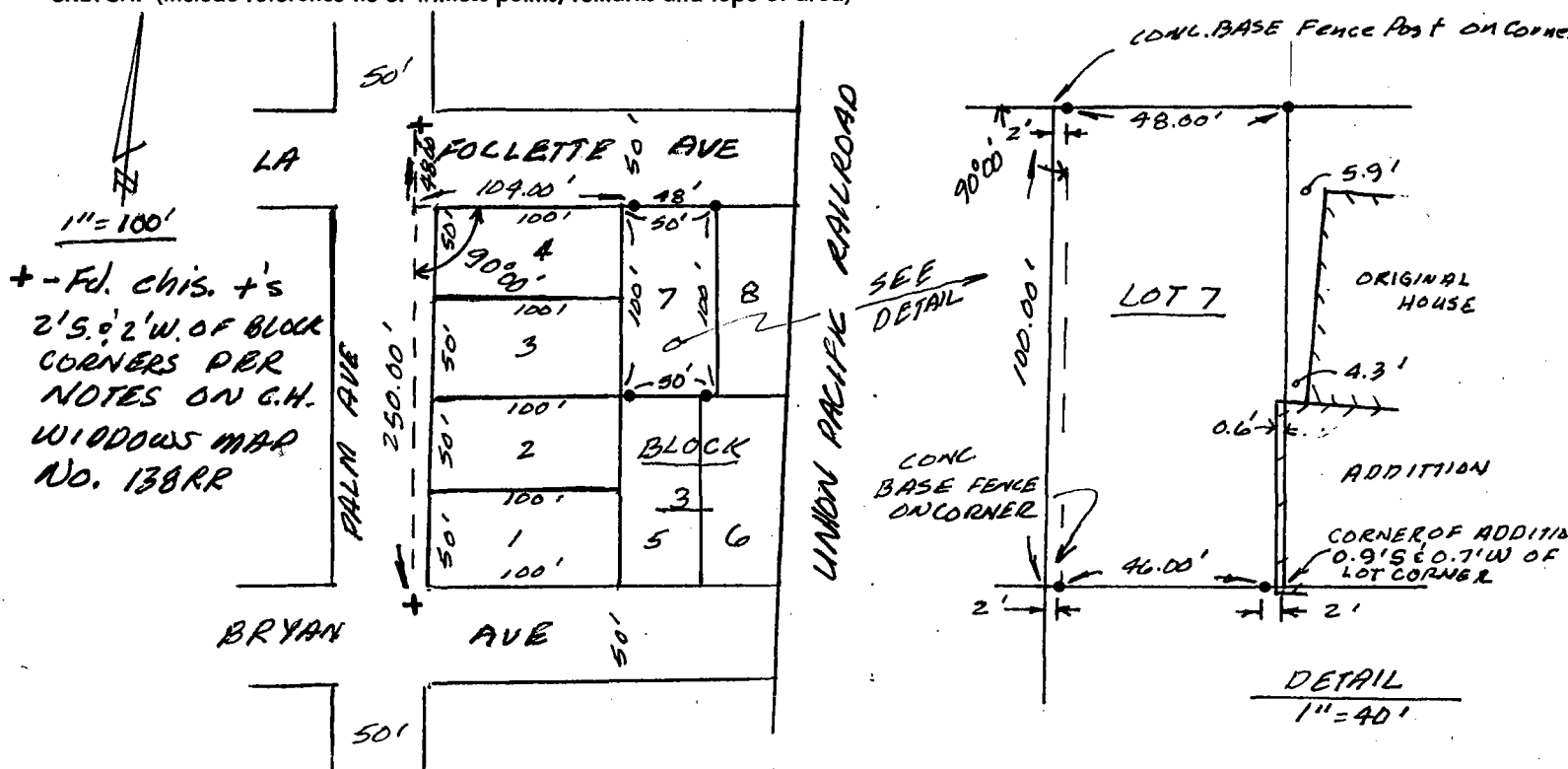
PHYSICAL DESCRIPTION OF CORNER FOUND; EVIDENCE AND METHOD USED TO IDENTIFY OR REESTABLISH
NO CORNER'S FOUND, RESET PER SKETCH BELOW

PHYSICAL DESCRIPTION OF MONUMENTS REBUILT OR PERPETUATED
MONUMENTS SET: 3/4" REBAR WITH PLASTIC CAPS ATTACHED AND STAMPED: L.S. 4334, SHOWN THUS: —●—

CALIFORNIA COORDINATE SYSTEM ORDER: FIRST SECOND THIRD
STATIONS USED: NGS (USC & GS) STATE COUNTY OTHER STATION _____ STATION _____
ZONE _____ ELEVATION _____ NORTHINGS (Y) _____ EASTINGS (X) _____

(Fold)

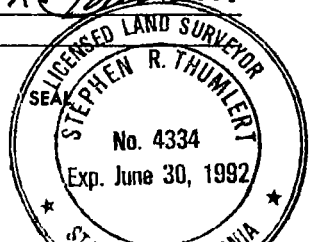
SKETCH: (Include reference tie or witness points, remarks and topo of area)



SURVEYOR'S CERTIFICATE

THIS CORNER RECORD WAS PREPARED BY ME OR UNDER MY DIRECTION IN CONFORMANCE WITH THE LAND SURVEYORS ACT ON June 28 1991

SIGNED: Stephen R. Thumliert
L.S. or R.C.E. No.: 4334



COUNTY SURVEYOR'S CERTIFICATE

THE CORNER RECORD WAS RECEIVED July 10, 1991 AND EXAMINED AND FILED July 15, 1991

BY: Robert D. Schrammek
TITLE: Chief Deputy County Surveyor

DOCUMENT No. CR-91-002

STATEMENT ON BACK OF SHEET YES NO