



# WELCOME!

We hope you enjoy your visit to San Joaquin County Parks. Here's a few tips to make your visit more enjoyable.

All picnic shelters are furnished with water, BBQ grills and electricity (except the Poppy picnic area). Reservations for rental facilities and campgrounds may be made up to a year in advance to secure desired date and must be paid in full at the time of booking. Rental fees do not include parking, processing fees, possible cleaning/damage deposit or security. Hours may vary. Fees are subject to change.

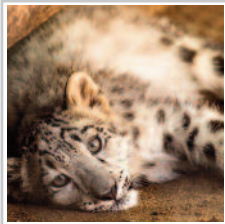
Reservations can be made by phone Monday through Friday, 8 a.m. to 4:30 p.m. by calling (209) 953-8800 or 331-7400 or visit the office, located at Micke Grove Park in Lodi.

Go to [www.sjparks.com](http://www.sjparks.com) for current rates, fees and operating hours. Parking fees apply at regional parks.

## Micke Grove Regional Park

11793 N. Micke Grove Rd., Lodi, CA 95240

A gift from Lodi farmer turned philanthropist William G. Micke, this 132-acre park remains one of the most popular attractions in San Joaquin County. It features:



- Micke Grove Zoo ([www.mgzoo.com](http://www.mgzoo.com))
- Japanese Garden with Tea Pavilion & Koi Pond
- Sydney C. Wortley Lake
- San Joaquin County Historical Museum
- Fun Town amusement rides
- Rental facilities including outdoor picnic shelters and Memorial Auditorium
- An 18-hole disc golf course, waterplay features, softball fields and playgrounds
- Picnic tables, BBQ grills and horseshoe pits

### Rental Facilities

- Memorial Building (Cap. 300)
- Japanese Garden (Cap. 175)

### Picnic Shelters & Areas

- Delta Shelter (Cap. 600)
- Camanche Shelter (Cap. 350)
- San Joaquin Shelter (Cap. 350)
- Mokelumne Shelter (Cap. 200)

- Stanislaus Shelter (Cap. 170)
- Middle River Shelter (Cap. 150)
- Pixley Shelter (Cap. 150)
- Bear Creek Shelter (Cap. 100)
- Calaveras Shelter (Cap. 50)

## Oak Grove Regional Park

4520 W. Eight Mile Rd., Stockton, CA 95209

Located near Stockton's Spanos Park West, this 180-acre park situated in a beautiful oak-forest setting features several amenities:



- Oak Grove Lake
- Oak Grove Nature Center
- Two nature trails
- Rental facilities including the indoor Boat House plus outdoor picnic shelters
- Two 18-hole disc golf courses, seasonal paddleboat rentals and horseshoe pits
- Children's playgrounds, youth campground, picnic tables and BBQ grills

### Rental Facilities

- Outdoor Amphitheater (Cap. 400)
- Boat House (Cap. 50, includes indoor seating for 32)
- Youth Campground (Cap. 150)
- Oaks Pavilion (Cap. 500)
- Poplar Shelter (Cap. 150)
- Alder Shelter (Cap. 50)
- Sycamore Shelter (Cap. 50)
- Willow Shelter (Cap. 50)
- Poppy Picnic Area (Cap. 30)

## Dos Reis Regional Park

890 W. Dos Reis Rd., Lathrop, CA 95330



Tucked in along the San Joaquin River, Dos Reis features 26 R.V. campsites with full hook-ups and shower facilities. Tent camping is offered from 12 noon Friday through 8 a.m. Monday and holidays. Boat launching is available, along with a day-use area complete with picnic tables, barbecues, horseshoe pits and a children's play area.

## Westgate Landing Regional Park

15799 N. Glasscock Rd., Lodi, CA 95240



Located along the Mokelumne River, Westgate Landing offers 14 R.V./tent campsites (no hook-ups available), a fishing pier, overnight boat docking (no boat launching), day-use picnic sites and ½ mile of river frontage.

## Harmony Grove Church

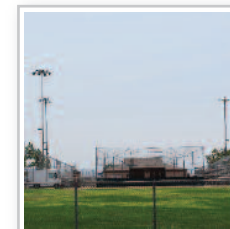
11455 E. Locke Rd., Lockeford, CA 95237



Built in 1859, this historic church has standard seating for 80 and features beautiful wood pews, glass arch windows and old-world charm. A popular setting for small weddings.

## Regional Sports Complex

7171 S. Highway 99, Stockton, CA 95206



The Regional Sports Complex offers a four-field softball complex (complete with lights, a public address system and score board), four soccer fields, concession stands and picnic shelter.

## Mossdale Crossing Regional Park

19091 S. Manthey Rd., Lathrop, CA 95330



Located between Tracy and Manteca, this park has a large, two-lane boat ramp offering access to Delta waterways, shaded picnic areas, restroom facilities and plenty of boat trailer parking.

## Stillman Magee Regional Park

23801 N. Mackville Rd., Clements, CA 95227



Offering public access to the Mokelumne River near Clements, Stillman Magee offers water rafting, swimming, picnic tables, horse trails, picnic tables, barbecues and fishing at the river's edge. RV and tent camping areas have recently been added.