



## **Attached/Detached Patio Cover**

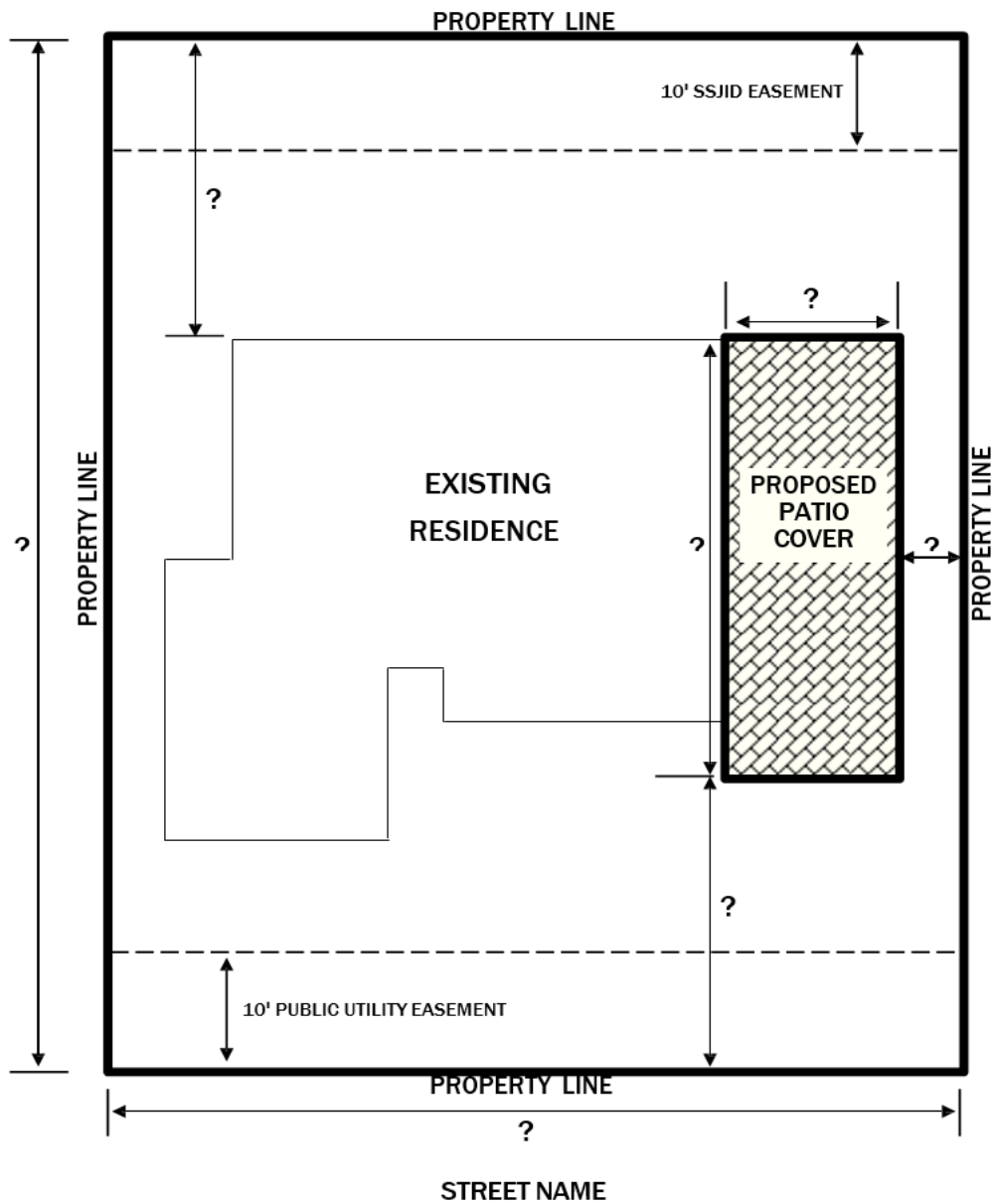
### **SUBMITTAL REQUIREMENTS FOR COVERED PATIOS**



*Refer to the drawings and information in this handout for help in preparing your submittal.*

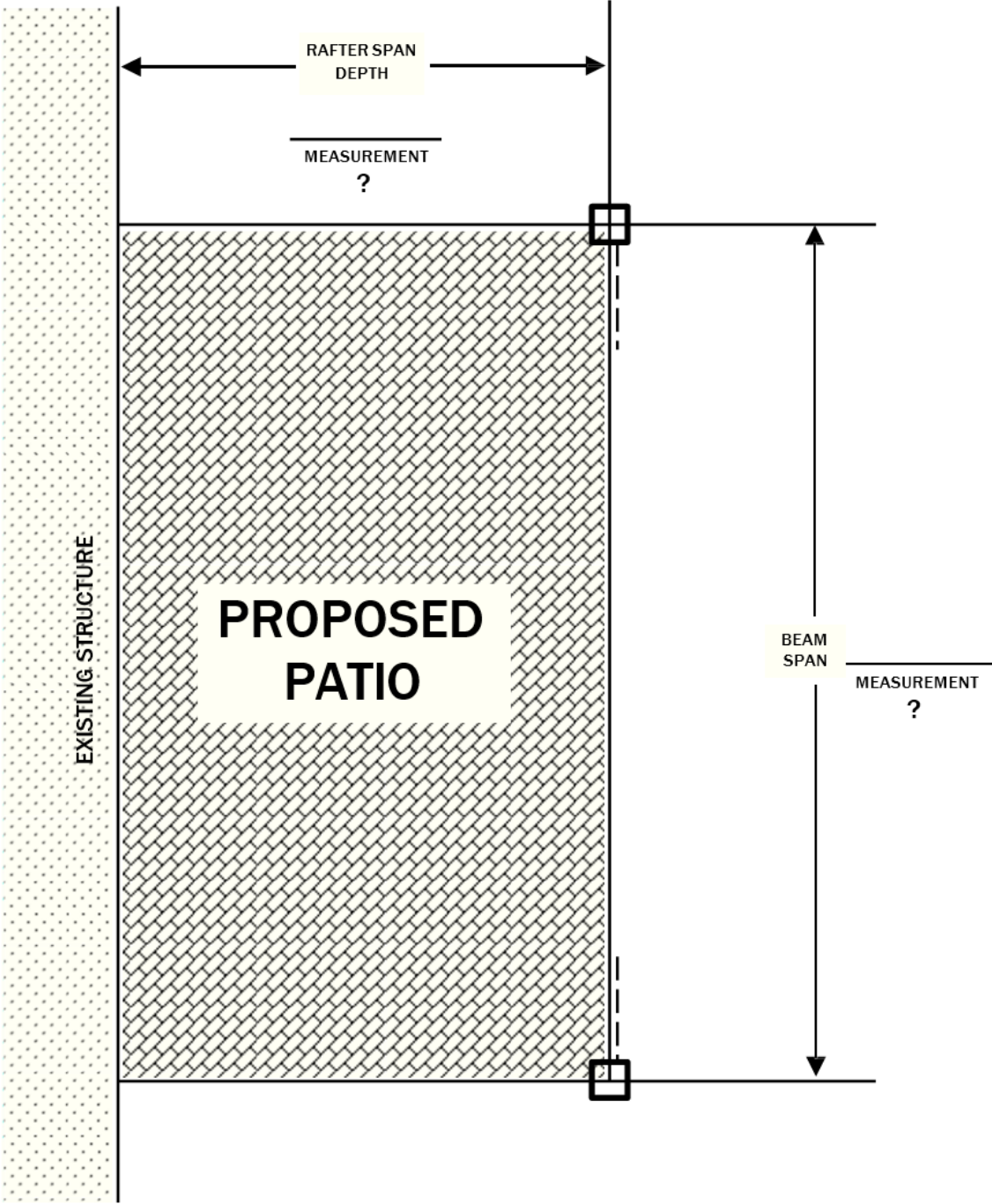
- 1. SITE PLAN** (see page 2) shall show:
  - a.** Lot dimensions and easements
  - b.** Existing structures (existing residence, pool, etc.) and the proposed patio structure(s) and their dimensions, including square feet of each.
  - c.** Distance between the proposed patio and property lines
  - d.** Distance between the proposed patio and existing structures on the property
- 2. ARCHITECTURAL, STRUCTURAL and DETAIL SHEETS** (see pages 5, 8 and 9) shall show:
  - a.** Foundation plan, scaled
  - b.** Framing plan, scaled, shall show size of headers (beams), size and spacing of posts, roof rafter size and spacing, attachments to walls, roof sheathing, type of roofing, and roof pitch or slope.
  - c.** Elevations, scaled.
  - d.** Electrical, if applicable. Location of lighting fixtures, ceiling fixtures, switches and receptacles.

## SAMPLE SITE PLAN

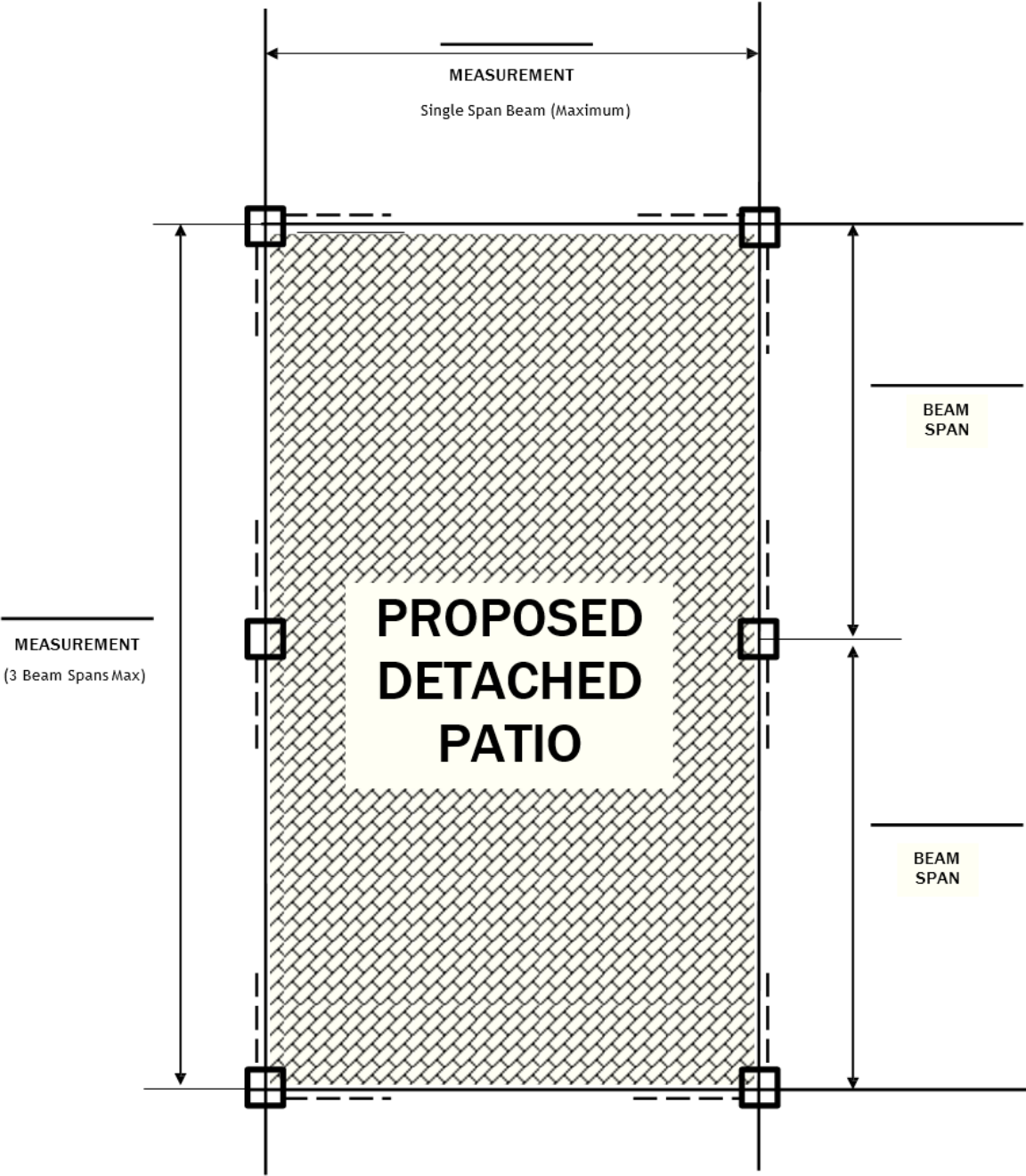


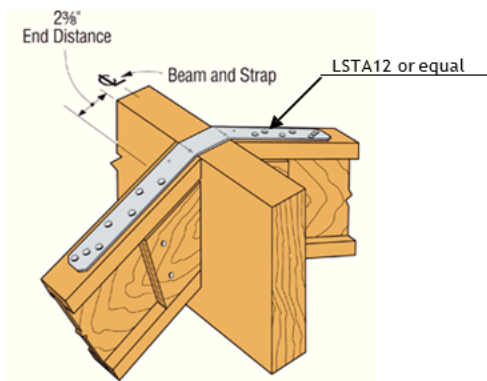
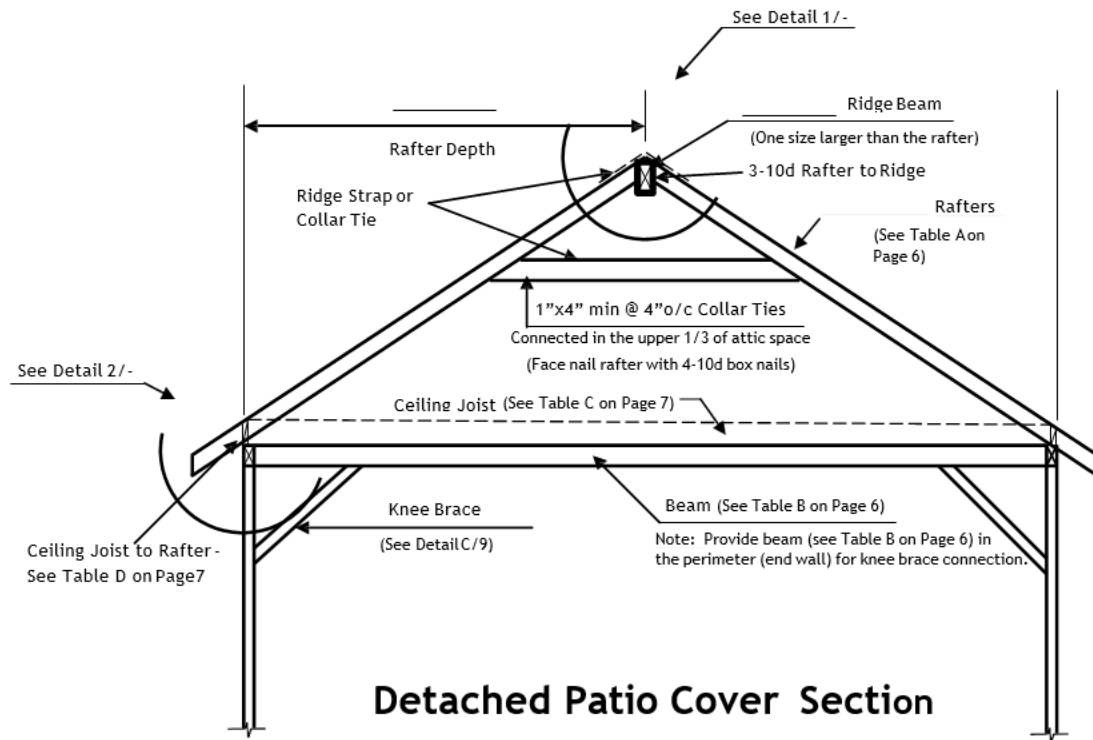
- 1) Show lot dimensions and total square footage of all covered areas.
- 2) Check with the Planning Division for building setback requirements.
- 3) Check with Public Works for location of any utility easements.

**SAMPLE FLOORPLAN**

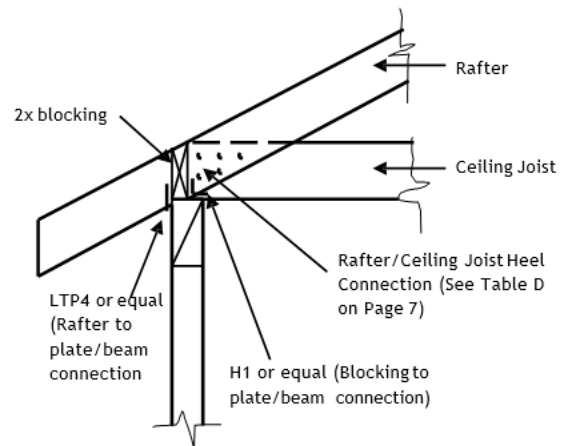


SAMPLE FLOORPLAN





**Detail 1**



**Detail 2**

**TABLE A: Allowable Spans For Rafters**

SIZE *	SPACING	SPAN
2" x 4"	12"	9' - 10"
	16"	8' - 11"
	24"	7' - 10"
2" x 6"	12"	15' - 6"
	16"	14' - 1"
	24"	11' - 11"
2" x 8"	12"	20' - 10"
	16"	18' - 5"
	24"	15' - 1"
2" x 10"	12"	Span exceeds 26' in length
	16"	23' - 6"
	24"	18' - 5"
2" x 12"	12"	Span exceeds 26' in length
	16"	26' - 0"
	24"	21' - 4"

**TABLE B: Allowable Spans for Beams**

SIZE *	10' Rafter Span Depth	15' Rafter Span Depth	20' Rafter Span Depth	25' Rafter Span Depth
(2) 2" x 6"	7' - 8"	6' - 7"	5' - 10"	5' - 4"
(2) 2" x 8"	9' - 8"	8' - 4"	7' - 5"	6' - 9"
(2) 2" x 10"	11' - 10"	10' - 2"	9' - 0"	8' - 3"
(2) 2" x 12"	13' - 9"	11' - 9"	10' - 6"	9' - 6"
4" x 4"	5' - 8"	4' - 10"	4' - 4"	3' - 11"
4" x 6"	8' - 3"	7' - 1"	6' - 4"	5' - 9"
4" x 8"	10' - 11"	9' - 4"	8' - 4"	7' - 7"
4" x 10"	13' - 4"	11' - 5"	10' - 2"	9' - 3"
4" x 12"	15' - 7"	13' - 4"	11' - 10"	10' - 10"
4" x 14"	17' - 6"	15' - 0"	13' - 4"	12' - 1"

**TABLE C: Allowable Spans For Ceiling Joists**

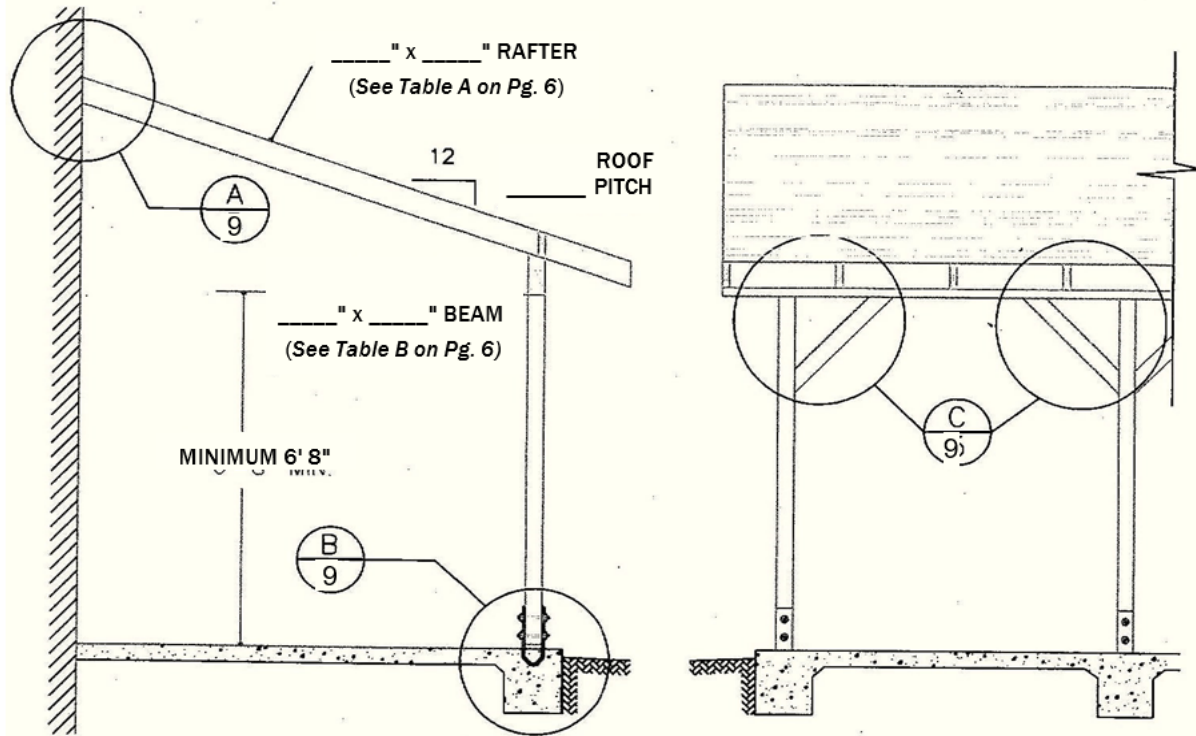
SIZE *	SPACING	SPAN
2" x 4"	12"	9' - 10"
	16"	8' - 11"
	24"	7' - 3"
2" x 6"	12"	15' - 0"
	16"	13' - 0"
	24"	10' - 8"
2" x 8"	12"	19' - 1"
	16"	16' - 6"
	24"	13' - 6"
2" x 10"	12"	23' - 3"
	16"	20' - 2"
	24"	13' - 6"
2" x 12"	12"	26' - 7"
	16"	23' - 0"
	24"	21' - 4"

**TABLE D: Rafter/Ceiling Joist Heel Connections**

RAFTER SLOPE	RAFTER SPACING	ROOF SPAN (FEET) *			
		12	20	28	36
3:12	12"	4	6	8	10
	16"	5	8	10	13
	24"	7	11	15	19
4:12	12"	3	5	6	8
	16"	4	6	8	10
	24"	5	8	12	15
5:12	12"	3	4	5	6
	16"	3	5	6	8
	24"	4	7	9	12

\*Required number of 16d common nails

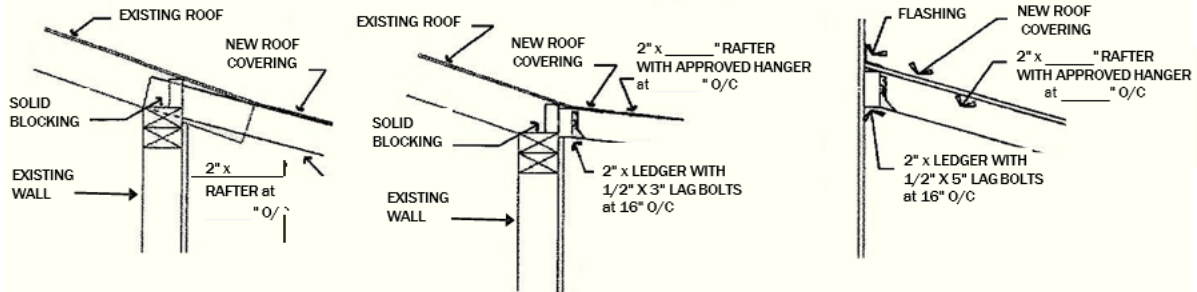
## REQUIRED DETAILS



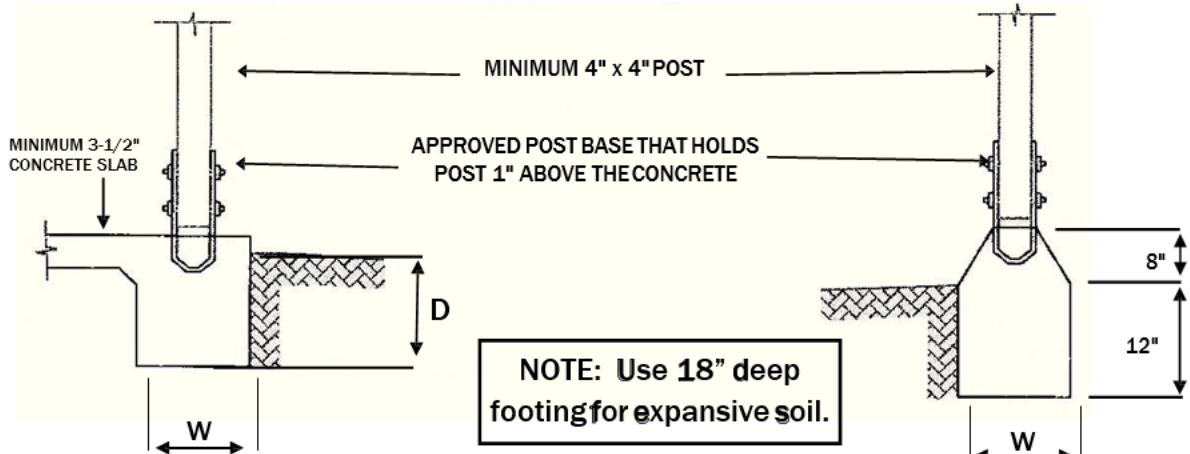
## ROOF COVERING SPECIFICATIONS

1. The minimum roof pitch for asphalt shingles is 4:12; however, asphalt shingles may be installed at a pitch between 2:12 to less than 4:12 if two layers of Type 15 felt applied shingle-fashion are used and the shingles are self-sealing. 2016 CBC Sect. 1507.2.8/ 2016 CRC Table 905.1.1(2)
2. Plywood or particle board must be CC exterior or better and rated for the span being used. Nailing shall be a minimum of 8d at 6" O.C. on the edges and 12" O.C. on the field.
3. For roof pitches below 2:12, a low-sloped roofing system approved by the Building Official shall be used.
4. The details on this sheet are not meant to be used for concrete tile roof coverings.

ROOF COVERING: \_\_\_\_\_  
(SEE NOTES ON PAGE 8)



**DETAIL A**

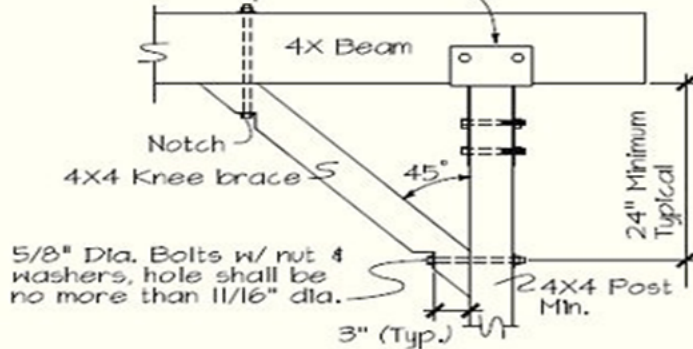


12" W x 12" Deep Cont. Ftg. — UP TO 2200#  
12" W x 18" Deep Cont. Ftg. — UP TO 3200#  
18" W x 18" Deep Cont. Ftg. — UP TO 4900#

**DETAIL B**

12" x 12" - UP TO 1000#  
18" x 18" - UP TO 2250#  
24" x 24" - UP TO 4000#

Approved Column Cap, or T- Strap  
both sides, or post cap installed per  
manufacturer's specifications



**DETAIL C**