

FOR MORE INFORMATION CONTACT:

Department of Public Works
Solid Waste Division
(209) 468-3066

Office of the Agricultural
Commissioner
(209) 953-6000

OTHER RESOURCES:

PG&E Offers Rebates & Incentives
For more info: (800) 468-4743
Energy Savings (800) 933-9555
Residential: www.pge.com/rebates
Business: www.pge.com/businessrebates
Multifamily: www.pge.com/multifamily

SJ Valley Air Offers
Grants & Incentives
(209) 557-6400
www.valleyair.org/grants/

PESTICIDE CONTAINER RECYCLING IS PROUDLY SPONSORED BY:

San Joaquin County
Board of Supervisors &
The Communities of San Joaquin County

**Working Together Today for
A Greener Tomorrow**



**RECYCLE
USED OIL**

LOCATIONS OFFERING FREE
USED OIL COLLECTION
FOR SMALL AG BUSINESSES

Kludt Oil
1126 E. Pine Street
Lodi, CA 95240
(209) 368-0634

Next Level Parts, Inc. -
Carquest Auto Parts
1730 Jackson Avenue
Escalon, CA 95320
(209) 838-3518

Call for Instructions & Transportation Variances.

The Ag Oil Recycling Program is a partnership between the Communities of San Joaquin County and the California Department of Resources Recycling and Recovery (CalRecycle).



**PESTICIDE CONTAINER
RECYCLING
PROGRAM**

2024



- FREE SERVICE
- SAVE MONEY
- CONSERVE RESOURCES
- PROTECT THE LAND AND WATER

SAN JOAQUIN

DEPARTMENT OF PUBLIC WORKS | SOLID WASTE DIVISION

www.SJGreycle.org

2024

FREE COLLECTION EVENT LOCATIONS & SCHEDULES

Collection events are from 8:00 a.m. to 12:00 p.m.

***Schedule is subject to change due to weather, manpower, and unforeseen operational circumstances.**

North County Recycling Center

17720 E. Harney Lane

Lodi, CA 95240

(209) 468-3066

**TRUCKS LARGER THAN 33 FT. MUST PROVIDE * NOTIFICATION PRIOR TO EVENT DATE *
Call: (209) 468-3066**

Jan 11 | Mar 14 | May 9 | July 11 | Sept 12 | Nov 14

Tracy Materials Recovery Facility

30703 S. MacArthur Drive

Tracy, CA 95377

(209) 832-2355

Feb 14 | April 10 | June 12 | Aug 14 | Oct 9 | Dec 11

ACCEPTABLE CONTAINER REQUIREMENTS

SAN JOAQUIN COUNTY BUSINESSES/RESIDENTS ONLY

LOAD TRANSPORTATION: All loads must be secured and tarped or covered.

ACCEPTABLE MATERIAL: Clean HDPE #2 agricultural containers are FREE of charge. All other materials may be subject to a fee.

TYPE: Non-refillable HDPE #2 agricultural containers, ONLY! EPA registered for agricultural products.



SIZES: Up to 55 gallon capacity drums.

HDPE

DRUMS: Must be cut into quarters.

CLEANING: Triple or pressure rinse before delivery to event. Staining is acceptable; caked-on residue is not. Puncturing container is recommended.

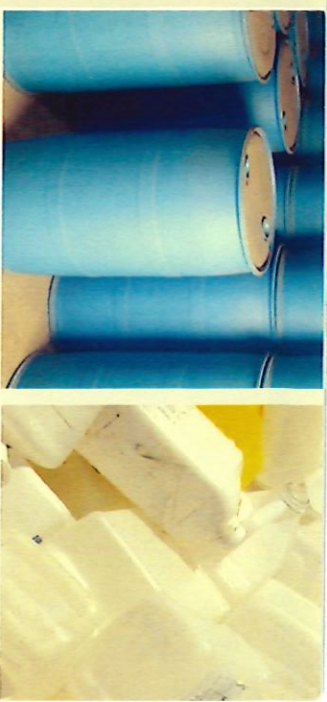
PARTS: Remove all instruction booklets, plastic bags and labels. Caps, lids, metal handles, rubber linings, plastic seals and bungs will not be accepted. These items, when triple rinsed, may be placed in the trash.

INSPECTION: Containers will be officially certified by an inspector from the Agricultural Commissioner's Office as meeting the recycling requirements listed above.

UNLOADING: Containers must be off-loaded by customer into a collection bin at event.

NOTICE

Containers not meeting the above-stated requirements, or those that once held motor oil, fuel, or antifreeze, will be refused and may cause the load to be rejected in its entirety. If contamination is detected post-delivery, San Joaquin County will contact the person or entity that made delivery of prohibited waste. The contaminants must then be removed from the premises by the deliverer within 48 hours from the time of notification and must be disposed of as prescribed by state and federal laws. Proof of proper disposal (documents and/or manifests) will be required and shall be provided to San Joaquin County Public Works, Solid Waste Division. If not safely and lawfully removed within the 48 hour period, San Joaquin County will contract with a hazardous waste hauler for removal and legal disposal. The person or entity that made delivery shall be solely responsible for all costs associated with the handling and disposal of prohibited materials.



DISPOSAL PROCEDURES

On Scheduled FREE Recycling Days:

1. Follow Acceptable Container Requirements.
2. Properly secure loads and tarp or cover.
3. A self-certification form stating the containers are clean can be completed in advance. Forms are available at the Agricultural Commissioner's Office.
4. Containers will be officially certified during the event by an inspector from the Agricultural Commissioner's Office.
5. No fees will be charged for clean HDPE #2 agricultural containers. If materials other than HDPE #2 are included in the load, a fee will be charged for the disposal of these items.
6. Off-load containers into collection bins as instructed.
7. Participants that abandon unacceptable materials may be banned from future events.

On an Unscheduled Day:

1. Follow Acceptable Container Requirements.
2. Have containers inspected and certified by an inspector from the Agricultural Commissioner's Office before they are taken to an authorized disposal site. Forms are available at the Agricultural Commissioner's Office:

Stockton: (209) 953-6000
Lodi: (209) 331-7287
Simmis Station: (209) 468-5542
3. Transport secured load of containers tarped or covered with certification form to the disposal site. Normal fees will apply.
4. Off-load containers as instructed.