

2012 Agricultural Report SAN JOAQUIN COUNTY



Leading the State...

SAN JOAQUIN COUNTY LEADS THE STATE

Consistently, San Joaquin County leads the state in the production value of apples, asparagus, cherries, grain corn and walnuts. In 2012, these five crops generated \$833,452,000. This figure represents 29% of the County's total agricultural value.

APPLES

San Joaquin County is the largest producer, packer and exporter of apples in California. As compared to the other leading crops, apples are a relative newcomer to the County's crop mix. Apples first appeared in the County's Agricultural Report in 1974. The apple acreage reported that year was 91 acres. Apple acreage peaked in 2005 with 5,880 acres and it is now holding steady at 3,610 acres. The County's average production value for apples is close to \$50 million, which is 42% of the state's production value. The majority of the County's apples are grown in the Linden and Thornton areas of the County.

ASPARAGUS

Even though acreage has declined over the past few years, asparagus remains as one of the County's hallmark crops. The County's asparagus crop was king throughout much of the last century peaking at approximately 55,000 acres in the 1950s and representing nearly half of the County's vegetable production value. Due to worldwide competition and rising labor costs, asparagus is now down to approximately 6,300 acres. Nonetheless, the County's average production value for asparagus is 49% of the state's total value and amounts to a little more than \$36 million annually. Asparagus is primarily grown in the Delta region of the County.

CHERRIES

San Joaquin County is world renowned for its cherry crop. The County exports over 25,400 tons of fresh-packed cherries to over 50 foreign countries. The top five export destinations are: 1) Canada, 9,500 tons; 2) Japan, 7,000 tons; 3) Korea, 3,000 tons; 4) Taiwan, 1,300 tons; and 5) China, 1,100 tons. On average, the County produces approximately 45% of the state's cherry crop. The majority of the cherries in California are grown and packed in the County and are found in the Linden/Lodi/Stockton areas.

GRAIN CORN

There are many types of corn but grain corn is the most commonly produced with over 75 million acres grown in the United States each year. Unlike sweet corn that is eaten fresh, grain corn is dried and processed. Most of the grain corn produced is used in livestock feed. The balance is processed into ingredients for many food items and industrial purposes. Corn for grain is mainly produced in the Delta area of the County. The soil of the Delta is rich in nutrients, holds water readily and with an abundant water supply, the Delta area is very conducive to corn production. The value of the County's grain corn crop averages a little more than \$56 million or 34% of the state's production value.

WALNUTS

Over the past five years, the value of the County's walnut crop has increased by more than 3 ½ times. This rapid increase in walnut value is largely due to increased acreage and a strong export market. In addition to the County's traditional walnut export markets, emerging markets such as China, India, and Turkey have helped fuel the recent rapid increase in exports. Walnuts are grown in the Linden/Stockton area of the County and areas south of Stockton. The County accounts for approximately 20% of California's walnut production value.

**SAN JOAQUIN COUNTY
AGRICULTURAL COMMISSIONER'S OFFICE**

2012 ANNUAL CROP REPORT

Scott Hudson
Agricultural Commissioner / Sealer

Compiled by
Rick Schwieger & Anna Brown

BOARD OF SUPERVISORS

Carlos Villapudua	District 1
Frank L. Ruhstaller	District 2
Steve J. Bestolarides	District 3
Ken Vogel, Chairman	District 4
Bob Elliott, Vice-Chairman	District 5

Rosa Lee
Interim County Administrator

**AGRICULTURAL COMMISSIONER/SEALER
SCOTT HUDSON**

**ASSISTANT AGRICULTURAL COMMISSIONER/SEALER
GARY STOCKEL**

**Martin Brockman
Barbara Huecksteadt
Don McCoon
Tom Reed**

**Nancy Barger
Colleen Bednarek
Anna Brown
Humberto Castro
Tom Dawson
Tom Doud
Raung Long
Vanze Lum
Rand Medina
Kim Martin
Maria Jochimsen
Robert Pelletier
Rod Saiki
Rick Schwieger
Jack Snyder
Ted Viss
Thomas Watkins
Sue Williamson**

Ferdinand Pura

**Annette Aina
Jo Aring-Tengonciang
Jamise Clyburn
Rachel Dawson
Carol Giuffre
Share Hawkins
Hiromi Hernandez
Terry King
Laura Rocha
Kim Delucchi**

**Deputy Agricultural Commissioner
Deputy Agricultural Commissioner
Deputy Agricultural Commissioner
Deputy Agricultural Commissioner**

**Senior Agricultural Biologist, Lodi
Senior Agricultural Biologist
Agricultural Biologist I
Senior Agricultural Biologist, Simms Station
Senior Agricultural Biologist, Simms Station
Senior Agricultural Biologist
Senior Agricultural Biologist, Lodi
Agricultural Biologist I, Lodi
Senior Agricultural Biologist
Agricultural Biologist I
Agricultural Biologist II, Simms Station
Senior Agricultural Biologist
Agricultural Biologist II
Agricultural Biologist I
Agricultural Biologist I
Senior Agricultural Biologist
Senior Agricultural Biologist
Senior Agricultural Biologist**

Department Information Systems Analyst II

**Administrative Secretary
Senior Office Assistant, Lodi
Senior Office Assistant
Senior Office Assistant
Senior Office Assistant
Accounting Technician I
Office Assistant Specialist
Accounting Technician II
Senior Office Assistant, Simms Station
Office Assistant**

All staff are based in Stockton unless otherwise noted.



SAN JOAQUIN COUNTY

OFFICE OF THE

AGRICULTURAL COMMISSIONER

MAIN OFFICE
2101 E. EARHART AVENUE, Suite 100
STOCKTON, CALIFORNIA 95206
PHONE: (209)953-6000 FAX: (209)953-6022

SCOTT HUDSON
AGRICULTURAL COMMISSIONER
SEALER OF WEIGHTS AND MEASURES

GARY STOCKEL
ASST. AGRICULTURAL COMMISSIONER
ASST. SEALER OF WEIGHTS AND MEASURES

LODI OFFICE
210 N. SACRAMENTO ST.
(209) 331-7287

SIMMS STATION – RIPON
17620 E. HWY 120
(209) 838-2276

MS. KAREN ROSS, SECRETARY
CALIFORNIA DEPARTMENT OF FOOD AND AGRICULTURE
AND
THE HONORABLE BOARD OF SUPERVISORS
SAN JOAQUIN COUNTY

Dear Secretary and Board Members:

In accordance with Section 2279 of the California Food and Agricultural Code, I am pleased to present the seventy-ninth annual report of agricultural production in San Joaquin County.

The gross value of agricultural production for 2012 is estimated at another all-time high of \$2,869,472,000. This is an increase of 28.18% from the 2011 estimated production value of \$2,238,688,000. The following are the 2012 values for each crop category, as well as, the percentage change over the 2011 values:

- Field Crops: \$329,973,000 (+7.4%)
- Vegetable Crops: \$265,568,000 (-10.1%)
- Seed Crops: \$3,562,000 (-29.7%)
- Nursery Products: \$87,957,000 (+13.7%)
- Livestock & Poultry: \$97,151,000 (-5.0%)
- Livestock & Poultry Products: \$423,279,000 (-10.2%)
- Apiary Products: \$21,610,000 (+56.6%)
- Fruit & Nut Crops: \$1,640,372,000 (+71.5%)

2012 provided excellent growth in agriculture for San Joaquin County. Increases in almond and grape acreages and yields accounted for significant growth for each commodity. Following two below average years, cherries have shown increases in both yields and values. Decreases in the number of cattle and in milk production have resulted in losses for those commodities.

The values shown are estimates based on the most common method of sale for the individual commodity, except for fresh fruits and vegetables where the value is based on the F.O.B. packed price at the shipping point. The figures contained in this report are gross values rather than net returns to the grower.

I wish to express my sincere appreciation to all who assisted my Agricultural Biologists and Deputies by furnishing the necessary information that made this report possible.

Respectfully submitted

Scott Hudson
Agricultural Commissioner/Sealer



FIELD CROPS

Grain corn prices increased \$33.00 per ton while silage corn and silage other, including green chop, saw significant acreage increases.

CROP	YEAR	PRODUCTION				GROSS VALUE		
		ACRES	PER ACRE	TOTAL	UNIT	PER UNIT	SUBTOTAL	TOTAL
BEANS, DRY, ALL	2012	6,600	1.17	7,730	TON	\$639.00		\$4,938,000
	2011	4,000	1.16	4,630	TON	\$998.00		\$4,622,000
LIMA	2012	1,400	1.43	2,000	TON	\$1,285.00	\$2,570,000	
	2011	2,800	1.20	3,360	TON	\$1,003.00	\$3,370,000	
BEANS, OTHER*	2012	5,150	1.11	5,730	TON	\$1,152.00	\$2,368,000	
	2011	1,220	1.04	1,270	TON	\$1,000.00	\$1,252,000	
CORN, GRAIN	2012	60,600	4.82	292,000	TON	\$239.00		\$69,788,000
	2011	63,000	5.20	328,000	TON	\$206.00		\$67,568,000
HAY, ALL	2012	63,700	6.50	414,000	TON	\$216.00		\$89,602,000
	2011	62,700	5.69	357,000	TON	\$251.00		\$89,577,000
ALFALFA	2012	57,100	6.77	387,000	TON	\$220.00	\$85,140,000	
	2011	53,400	6.24	333,000	TON	\$255.00	\$84,915,000	
OTHER	2012	6,600	4.00	26,400	TON	\$169.00	\$4,462,000	
	2011	9,300	3.08	28,600	TON	\$163.00	\$4,662,000	
PASTURE & RANGE	2012	134,500			ACRE	\$40.00		\$5,393,000
	2011	134,500			ACRE	\$45.00		\$5,993,000
IRRIGATED	2012	14,500			ACRE	\$165.00	\$2,393,000	
	2011	14,500			ACRE	\$165.00	\$2,393,000	
OTHER	2012	120,000			ACRE	\$25.00	\$3,000,000	
	2011	120,000			ACRE	\$30.00	\$3,600,000	
RICE	2012	6,010	4.10	24,600	TON	\$326.00		\$8,020,000
	2011	5,410	3.99	21,600	TON	\$363.00		\$7,841,000
SAFFLOWER	2012	5,600	1.25	7,000	TON	\$525.00		\$3,680,000
	2011	7,170	2.00	14,330	TON	\$500.00		\$7,165,000
SILAGE, CORN	2012	52,300	30.80	1,611,000	TON	\$45.00		\$72,495,000
	2011	45,100	31.61	1,426,000	TON	\$44.00		\$62,744,000
SILAGE, OTHER INCLUDES GREEN CHOP	2012	109,000	9.60	1,047,000	TON	\$42.00		\$43,974,000
	2011	91,600	6.54	599,000	TON	\$34.00		\$20,366,000
WHEAT	2012	29,100	3.05	88,600	TON	\$226.00		\$20,031,000
	2011	37,500	2.90	108,700	TON	\$206.00		\$22,385,000
OTHER	2012	43,000						\$12,052,000
	2011	80,600						\$18,975,000
TOTAL	2012	508,000						\$329,973,000
	2011	532,000						\$307,236,000

NUMBERS MAY NOT COMPUTE EXACTLY DUE TO ROUNDING

*BEANS OTHER WILL NOW INCLUDE BLACK EYE, KIDNEY, GARBANZO, AND ALL OTHER BEANS NOT LISTED



Seed Crop

Seed production in the County continues to show a downward trend in 2012.

CROP	YEAR	PRODUCTION				GROSS VALUE	
		ACRES	YIELD	TOTAL	UNIT	PER UNIT	TOTAL
BEANS, OTHER	2012	295	21.40	6,300	CWT	\$47.00	\$296,000
	2011	44	23.00	1,000	CWT	\$46.00	\$55,000
MISCELLANEOUS	2012	880					\$3,266,000
	2011	514					\$5,014,000*
TOTAL	2012	1,180					\$3,562,000
	2011	558					\$5,069,000

NUMBERS MAY NOT COMPUTE EXACTLY DUE TO ROUNDING

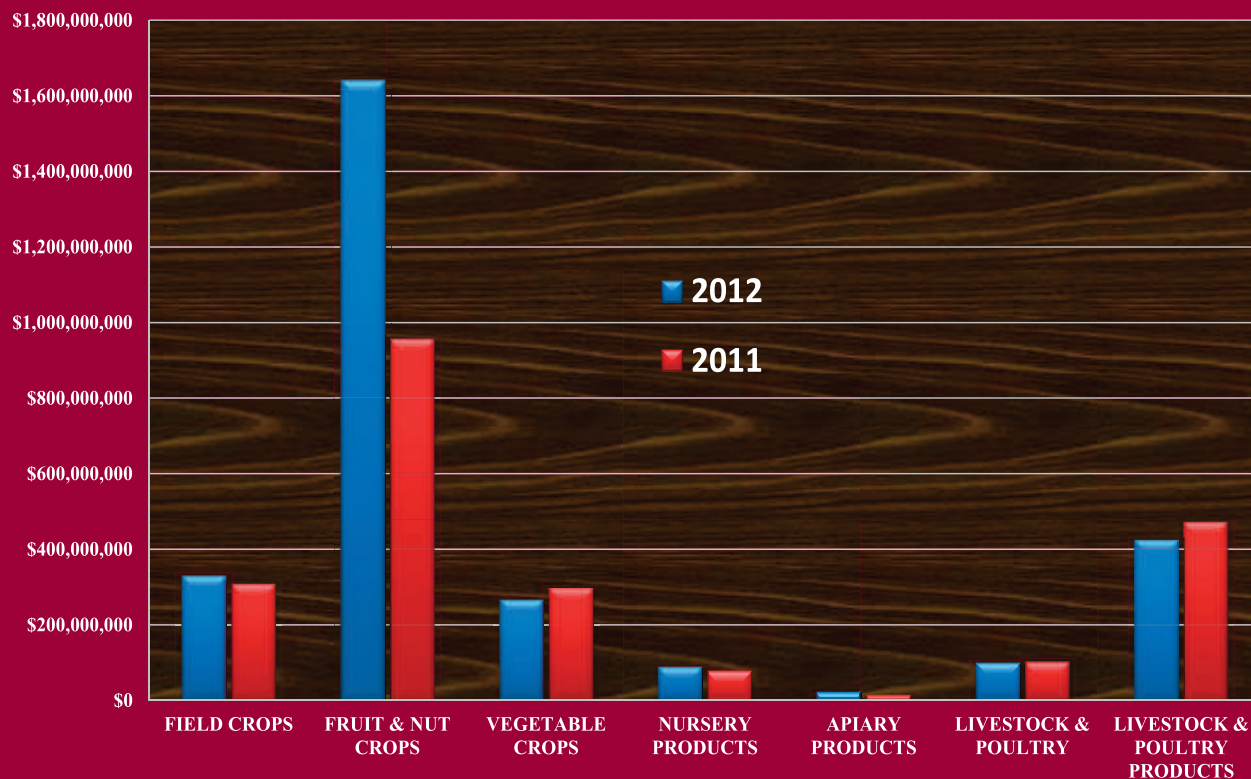
KIDNEY BEANS INCLUDED IN BEANS OTHER

VEGETABLES SEEDS INCLUDED IN MISCELLANEOUS

* MISCELLANEOUS DOUBLE REPORTED IN 2011

PERCENTAGE OF EACH CATEGORY TO TOTAL

COMPARISON OF VALUES FOR EACH CROP CATEGORY





FRUIT AND NUT CROPS

Wine grape acreage, yields and values showed significant increases from 2011, resulting in grapes being the number one crop in 2012.

CROP	YEAR	PRODUCTION				GROSS VALUE		
		ACRES	PER ACRE	TOTAL	UNIT	PER UNIT	SUBTOTAL	TOTAL
ALMOND, MEATS	2012	56,100	1.23	69,000	TON	\$4,354.00		\$300,426,000
	2011	48,800	1.03	50,200	TON	\$3,740.00		\$187,748,000
ALMOND, HULLS	2012			155,000	TON	\$145.00		\$22,519,000
	2011			113,000	TON	\$124.00		\$14,012,000
APPLES, ALL	2012	3,610	21.00	75,800	TON	\$503.00		\$45,157,000
	2011	3,670	23.49	86,153	TON	\$496.00		\$51,390,000
FRESH	2012			55,300	TON	\$705.00	\$39,016,000	
	2011			62,390	TON	\$665.00	\$41,489,000	
PROCESSING	2012			20,500	TON	\$300.00	\$6,141,000	
	2011			23,763	TON	\$416.00	\$9,901,000	
APRICOTS	2012	856	12.00	7,600	TON	\$398.00		\$3,025,000
	2011	694	12.00	8,300	TON	\$450.00		\$3,735,000
BLUEBERRIES	2012	1,320	4.20	5,550	TON	\$3,720.00		\$20,639,000
	2011	1,190	4.35	5,160	TON	\$4,671.00		\$24,102,000
CHERRIES, ALL	2012	20,660	3.08	63,800	TON	\$3,534.00		\$225,416,000
	2011	19,534	1.43	28,000	TON	\$3,185.00		\$89,175,000
FRESH	2012			56,600	TON	\$3,888.00	\$220,061,000	
	2011			21,000	TON	\$4,111.00	\$86,331,000	
PROCESSING	2012			10,000	TON	\$524.00	\$5,355,000	
	2011			7,040	TON	\$404.00	\$2,844,000	
GRAPES, ALL	2012	110,300	8.09	892,000	TON	\$616.00		\$549,054,000
	2011	93,300	5.61	523,000	TON	\$548.00		\$286,728,000
TABLE, CRUSHED	2012	805	8.50	6,840	TON	\$325.00	\$2,223,000	
	2011	280	5.00	1,400	TON	\$229.00	\$321,000	
WINE, ALL	2012	109,500	8.08	885,000	TON	\$618.00	\$546,830,000	
	2011	93,100	5.61	522,000	TON	\$549.00	\$286,407,000	
FRESH	2012			7,920	TON	\$1,112.00	\$8,807,000	
	2011			4,410	TON	\$300.00	\$1,323,000	
CRUSHED	2012			885,000	TON	\$608.00	\$538,080,000	
	2011			518,000	TON	\$551.00	\$285,418,000	

NUMBERS MAY NOT COMPUTE EXACTLY DUE TO ROUNDING



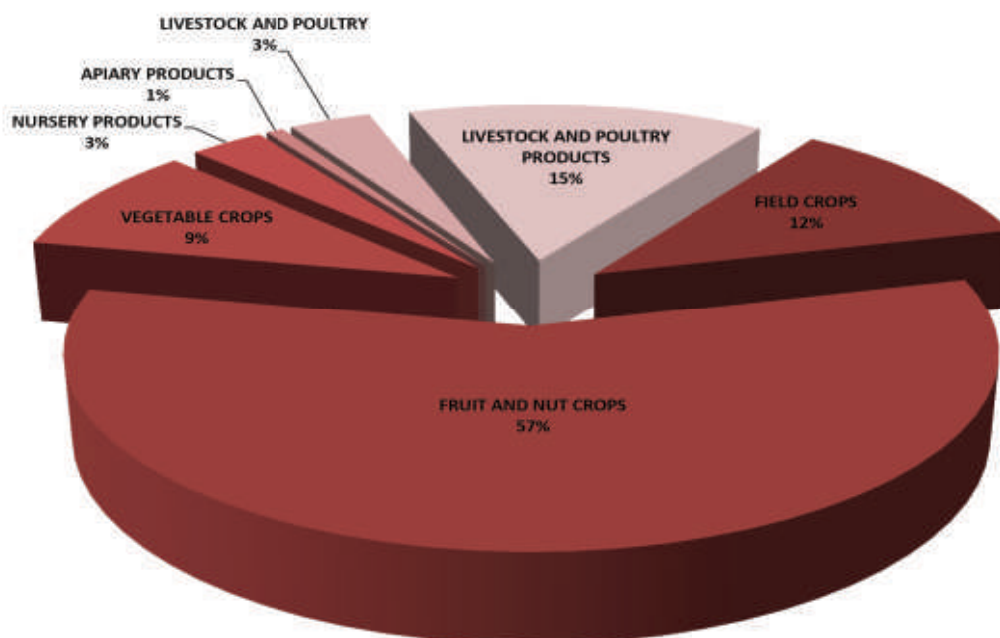
FRUIT AND NUTS CROPS

Almonds and walnuts continue to show growth in acreage, yields and values.

CROP	YEAR	PRODUCTION				GROSS VALUE		
		ACRES	PER ACRE	TOTAL	UNIT	PER UNIT	SUBTOTAL	TOTAL
OLIVES, PROCESSING	2012	4,440	4.25	19,000	TON	\$627.00		\$11,913,000
	2011	4,163	3.54	15,000	TON	\$532.00		\$7,980,000
PEACHES, ALL	2012	2,070	15.50	32,000	TON	\$293.00		\$9,406,000
	2011	1,940	22.37	43,400	TON	\$268.00		\$11,623,000
CLINGSTONE	2012	830	17.00	14,000	TON	\$316.00	\$4,456,000	
	2011	780	16.60	12,900	TON	\$291.00	\$3,754,000	
FREESTONE	2012	1,240	14.50	18,000	TON	\$275.00	\$4,950,000	
	2011	1,160	26.33	30,500	TON	\$258.00	\$7,869,000	
PEARS	2012	436	17.00	7,400	TON	\$295.00		\$2,183,000
	2011	325	10.00	3,300	TON	\$351.00		\$1,158,000
WALNUTS, ENGLISH	2012	57,800	2.75	159,000	TON	\$2,874.00		\$456,966,000
	2011	53,000	2.07	109,700	TON	\$2,542.00		\$278,857,000
MISCELLANEOUS	2012	770						\$3,946,000
	2011	1,030						\$6,240,000
BIOMASS	2012							\$1,635,000
	2011							\$1,654,133
TOTAL	2012	253,000						\$1,640,372,000
	2011	222,000						\$956,422,000

NUMBERS MAY NOT COMPUTE EXACTLY DUE TO ROUNDING

PERCENTAGE OF EACH CATEGORY TO TOTAL





VEGETABLE CROPS

Asparagus and melons showed good increases but overall Vegetable Crop values dropped due to decreases in sweet corn, potatoes, peppers, pumpkins and onions.

	YEAR	PRODUCTION				PER UNIT	SUBTOTAL	TOTAL
		ACRES	PER ACRE	TOTAL	UNIT			
ASPARAGUS	2012	6,320	1.97	12,500	TON	\$2,890.00		\$36,125,000
	2011	6,400	1.68	10,800	TON	\$2,930.00		\$31,644,000
CORN, SWEET	2012	2,560	7.70	19,700	TON	\$408.00		\$8,038,000
	2011	4,890	7.70	37,700	TON	\$501.00		\$18,888,000
CUCUMBERS	2012	2,410	9.00	21,700	TON	\$182.00		\$3,949,000
	2011	2,390	8.30	19,900	TON	\$183.00		\$3,642,000
MELONS, ALL	2012	2,530	40.40	102,000	TON	\$405.00		\$41,351,000
	2011	2,110	41.23	87,000	TON	\$275.00		\$23,931,000
WATERMELON	2012	2,290	42.13	96,500	TON	\$405.00	\$39,083,000	
	2011	2,080	41.50	86,300	TON	\$275.00	\$23,733,000	
OTHER	2012	240	23.63	5,670	TON	\$400.00	\$2,268,000	
	2011	30	22.00	660	TON	\$300.00	\$198,000	
ONIONS, DRY	2012	1,820	25.00	45,500	TON	\$300.00		\$13,650,000
	2011	2,880	25.24	72,700	TON	\$210.00		\$15,267,000
PEPPERS	2012	1,030	19.01	19,600	TON	\$529.00		\$10,359,000
	2011	1,630	24.00	39,100	TON	\$400.00		\$15,640,000
POTATOES	2012	3,600	18.85	68,100	TON	\$360.00		\$24,516,000
	2011	3,200	19.10	61,700	TON	\$780.00		\$48,126,000
PUMPKINS	2012	3,120	17.50	54,600	TON	\$300.00		\$16,380,000
	2011	3,280	18.00	59,000	TON	\$320.00		\$18,880,000
TOMATOES, ALL	2012	30,200	38.44	1,161,000	TON	\$88.00		\$102,632,000
	2011	32,300	36.25	1,171,000	TON	\$92.00		\$107,844,000
SHIPPING	2012	3,880	14.54	56,000	TON	\$412.00	\$23,072,000	
	2011	4,960	13.12	65,000	TON	\$400.00	\$26,000,000	
PROCESSING	2012	26,300	42.00	1,105,000	TON	\$72.00	\$79,560,000	
	2011	27,300	40.51	1,106,000	TON	\$74.00	\$81,844,000	
MISCELLANEOUS VEGETABLES	2012	1,720						\$8,568,000
	2011	3,580						\$11,576,000
TOTAL	2012	55,300						\$265,568,000
	2011	62,700						\$295,438,000

NUMBERS MAY NOT COMPUTE EXACTLY DUE TO ROUNDING



NURSERY AND APIARY PRODUCTS

Nursery products continue to show steady growth. The number and price of hives for pollination continues to increase annually.

NURSERY PRODUCTS

ITEM	YEAR	QUANTITY SOLD	UNIT	GROSS VALUE TOTAL
GRAPEVINES, STRAWBERRY PLANTS, FRUIT & NUT TREES	2012	115,111,000	PLANT	\$12,404,000
	2011	99,812,000	PLANT	\$11,714,000
VEGETABLE PLANTS	2012	359,552,000	PLANT	\$14,921,000
	2011	400,294,000	PLANT	\$13,955,000
FLOWERING POTTED PLANTS	2012	1,062,000	EACH	\$2,511,000
	2011	598,000	EACH	\$2,840,000
FOLIAGE PLANTS	2012	659,000	EACH	\$3,134,000
	2011	704,000	EACH	\$3,129,000
BEDDING PLANTS	2012	244,807,000	PLANT	\$13,331,000
	2011	230,669,000	PLANT	\$11,418,000
WOODY ORNAMENTALS	2012	7,035,000	EACH	\$27,527,000
	2011	6,281,000	EACH	\$22,669,000
BULBS, RHIZOMES, TURF, CACTUS, CHRISTMAS TREES, ETC.	2012			\$14,129,000
	2011			\$11,645,000
TOTAL	2012			\$87,957,000
	2011			\$77,370,000

NUMBERS MAY NOT COMPUTE EXACTLY DUE TO ROUNDING

APIARY PRODUCTS

ITEM	YEAR	PRODUCTION	UNIT	PER UNIT	GROSS VALUE TOTAL
HONEY	2012	108,000	LBS	\$2.05	\$221,000
	2011	108,000	LBS	\$1.56	\$168,000
POLLINATION	2012	152,400	HIVE	\$139.00	\$21,244,000
	2011	114,300	HIVE	\$109.00	\$12,415,000
OTHER APIARY*	2012				\$145,000
	2011				\$1,218,000
TOTAL	2012				\$21,610,000
	2011				\$13,801,000

NUMBERS MAY NOT COMPUTE EXACTLY DUE TO ROUNDING

*OTHER APIARY INCLUDES POLLEN, BEES, QUEENS, NUCLEUS COLONIES & BEESWAX



LIVESTOCK AND POULTRY

Decreases in the number of cattle, along with reductions in milk production, resulted in lower Livestock and Poultry values.

ITEM	YEAR	NO. HEAD	LIVE WEIGHT	UNIT	GROSS VALUE	
					PER UNIT	TOTAL
CATTLE & CALVES	2012	107,000	782,000	CWT	\$86.00	\$66,987,000
	2011	119,700	827,000	CWT	\$86.00	\$71,479,000
SHEEP & LAMBS	2012	17,365	23,000	CWT	\$149.00	\$3,437,000
	2011	13,874	18,000	CWT	\$185.00	\$3,333,000
BROILERS	2012	1,668,000	9,601,700	LBS	\$0.67	\$3,614,000
	2011	1,718,000	9,964,400	LBS	\$0.64	\$3,624,422
TURKEYS	2012	601,000	20,549,000	LBS	\$0.88	\$18,083,000
	2011	558,000	19,579,000	LBS	\$0.83	\$16,325,000
OTHER LIVESTOCK**	2012					\$5,030,000
	2011					\$7,476,000 *
TOTAL	2012					\$97,151,000
	2011					\$102,237,400

**OTHER LIVESTOCK INCLUDES HOGS, GOATS, SQUAB, DUCKS, AND OTHER FOWL

*CORRECTED VALUES FOR "OTHER LIVESTOCK" 2011

LIVESTOCK AND POULTRY PRODUCTS

ITEM	YEAR	PRODUCTION	UNIT	PER UNIT	GROSS VALUE	
					SUBTOTAL	TOTAL
MILK, ALL *	2012	23,771,000	CWT	\$17.00		\$404,109,000
	2011	24,461,000	CWT	\$19.00		\$452,880,000
WOOL	2012	62,000	LBS	\$1.80		\$112,000
	2011	32,000	LBS	\$1.75		\$57,000
EGGS, CHICKEN	2012	20,047,000	DOZ	\$0.84		\$16,771,000
	2011	19,380,000	DOZ	\$0.82		\$15,848,000
MANURE	2012	457,000	TON	\$5.00		\$2,287,000
	2011	491,000	TON	\$7.68		\$2,454,000
TOTAL	2012					\$423,279,000
	2011					\$471,239,000

NUMBERS MAY NOT COMPUTE EXACTLY DUE TO ROUNDING

*PREVIOUS REPORTS SHOWED MANUFACTURING AND PROCESSING MILK SEPARATELY

Top 5 Crops

Fun Facts and Trivia



CORN

- One bushel of corn weighs 56 pounds and will sweeten 400 cans of soft drinks.
- An ear of corn has 16 rows of kernels, average 600 kernels per ear with one corn silk per kernel.
- Ethanol, a renewable biofuel made from corn, is currently blended into more than 80 percent of the nation's fuel supply.



ASPARAGUS

- In August 1900 the first commercial shipment of canned asparagus was sent east in twenty railcars by the Hickmont Cannery on Bouldin Island.
- In 1925 two stern-wheeled riverboats, the Delta King and Delta Queen, initiated bulk shipments of canned asparagus from Stockton to Sacramento and then on to the bay area.
- In 1984, over 23, 259 acres of asparagus were harvested in San Joaquin County generating \$28,017,000 in revenue.



APPLES

- San Joaquin County is the largest producer, packer and exporter of apples in California and grows the largest amount of Gala, Fuji and Pink Lady varieties in California.
- 36 apples are required to make one gallon of cider.
- Apples originated in Central Asia and man has been eating them since at least 6500 BC.



WALNUTS

- The early English merchant mariners transported and traded walnuts throughout the world's ancient ports becoming known as the "English Walnut". Interestingly, England has never grown walnuts commercially.
- California's first commercial planting of walnuts was in 1867 near Santa Barbara. Seventy years later, in a historical horticultural move, the Central Valley production began.
- Franciscan priests brought walnuts to California in the late 1700's, and today California walnuts account for 99% of U.S and 75% of the world's production.



CHERRIES

- In an average crop year, one tree will produce 800 cherries.
- Cherries belong to the rose family as do almonds, peaches, apricots and plums.
- Sweet cherries were first brought to North America in 1629 by British Colonists and later to California by Spanish missionaries.

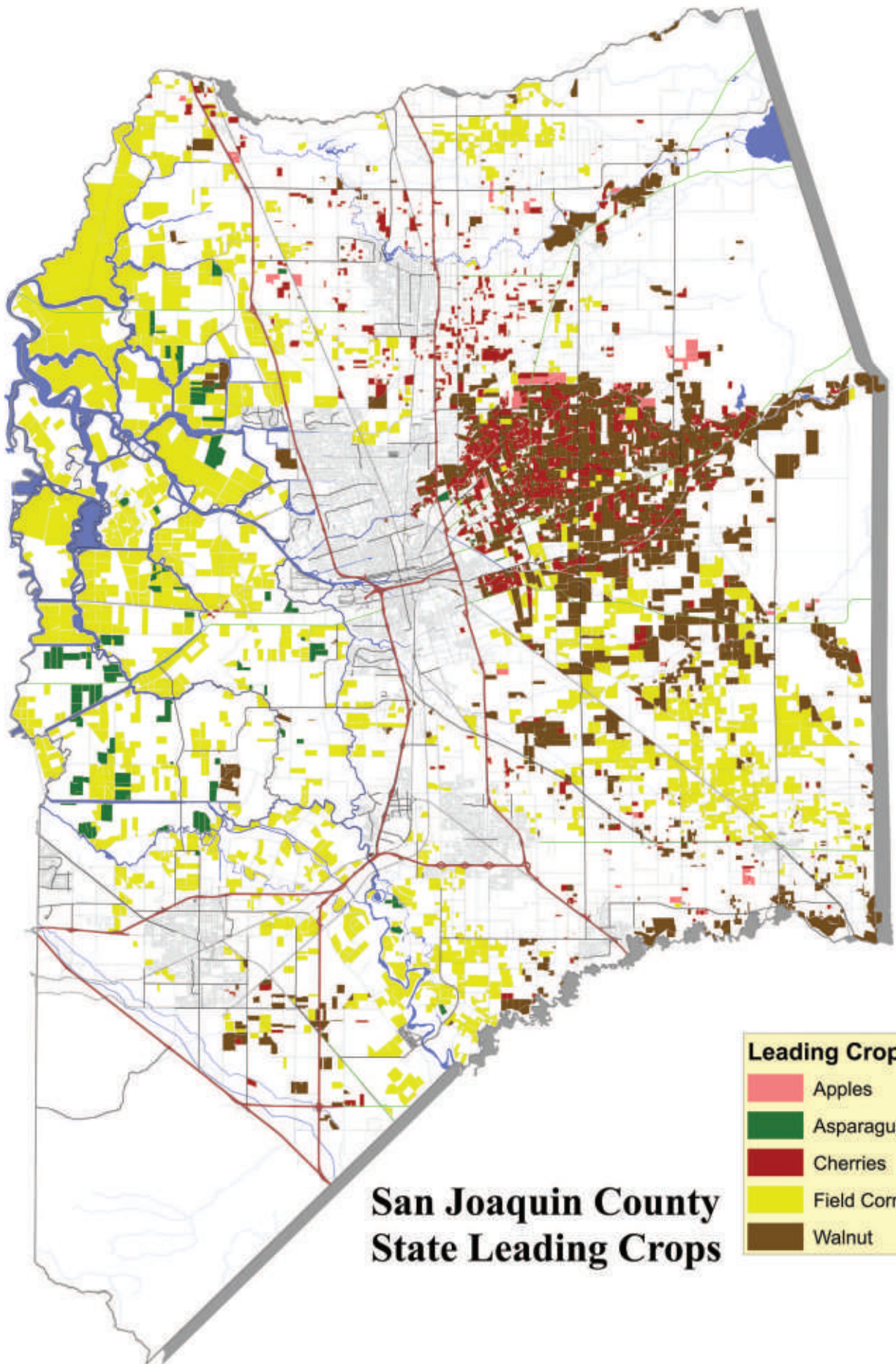
TOP TEN CROPS

2011

1. Milk - \$453M
2. Grapes - \$287M
3. Walnuts - \$279M
4. Almonds - \$188M
5. Tomatoes - \$108M
6. Hay - \$90M
7. Cherries - \$89M
8. Cattle and Calves - \$71M
9. Grain Corn - \$68M
10. Silage Corn - \$63M

2012

1. Grapes - \$549M ↑
2. Walnuts - \$457M ↑
3. Milk - \$404M ↓
4. Almonds - \$300M
5. Cherries - \$225M ↑
6. Tomatoes - \$103M ↓
7. Hay - \$90M ↓
8. Silage Corn - \$72M ↑
9. Grain Corn - \$70M ↑
10. Cattle, Calves - \$67M ↓





Pest / Detection and Sustainable Agriculture



Protection of our agricultural resources is of paramount importance for the Agricultural Commissioner's office. To protect our crops from non-native insects, a year round trapping program monitors for invasive pests. To maintain this program, the County employs 28 seasonal pest detection surveyors. These individuals are responsible for the placement, monitoring and identification of suspect pests from over 29,300 placed traps throughout the County. The Pest Exclusion unit has four full time and two part-time biologists as well as a Plant Detection dog. Responsibilities include daily inspections of arriving plant material at postal and parcel facilities, nurseries and private residences. Thousands of inspections are performed annually to keep the County free of non-native pests.

Here are some of the traps you might see around the county:



Jackson traps are a simple but effective means to trap a number of insects of concern, including the Oriental Fruit Fly, Mediterranean Fruit Fly, Melon Fruit Fly, and Light Brown Apple Moth (LBAM). A lure or bait specific to the insect of interest is placed in the trap, along with a sticky cardboard insert. During

2012, county trappers found several LBAM using these traps. No fruit flies of concern were detected.



Red delta-shaped traps, like the one pictured to the left, are deployed specifically to monitor for presence of the European Grapevine Moth (EGVM), a serious invasive pest of grapes. During the 2012 EGVM detection season, over 5,000 traps were placed in the County and monitored by 10 trappers every 2 weeks from March through October. EGVM was not detected in 2012.



The European Gypsy Moth has been established in the eastern US since the mid 1800's, but has so far been prevented from becoming established in California. Trappers deploy a green delta trap with a pheromone strip to attract male moths. In 2012, 246 Gypsy Moth traps were monitored throughout the county and none were found.

Yellow panel traps are primarily used for detection of the Asian Citrus Psyllid (ACP) and the Glassy-Winged Sharpshooter (GWSS). Both insects carry devastating plant diseases; ACP spreads Huanglongbing, or Citrus Greening Disease, and GWSS spreads Pierce's Disease in grapes. ACP was first found in California in 2008. This is the twelfth year the County has had a GWSS prevention program. The GWSS unit monitors over 3,000 detection traps and inspected over 2,200 incoming plant shipments in 2012.

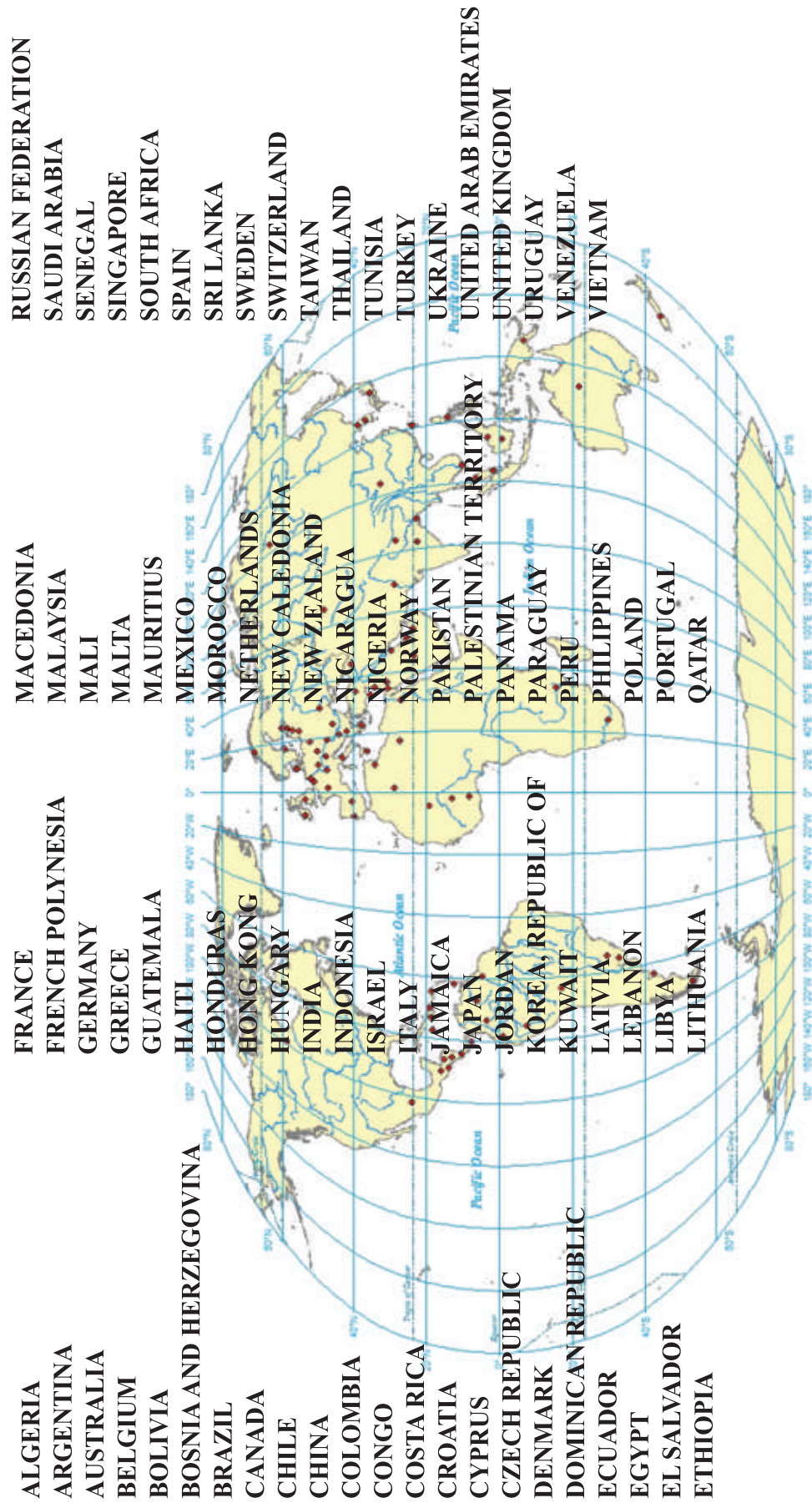


Bell shaped glass traps, known as McPhail traps, hold a water and yeast mixture which attracts flies such as the Caribbean Fruit Fly and Mexican Fruit Fly. These two species are capable of damaging most of the fruits and vegetables grown in California. Trappers choose trap location carefully for maximum effectiveness, and check the traps weekly.

Japanese Beetles, an established fruit, vegetable, ornamental, and turf pest east of the Mississippi, has thus far successfully been prevented from building up a population in California. Our county placed and monitored 251 traps in 2012 and had no finds.



San Joaquin County Trading Partners 2012



General San Joaquin County Information

County Seat:	Stockton		
County Population (2010 Census):	685,306		
Population per Square Mile:	489		
Incorporated Cities (7):	Escalon, Lathrop, Lodi, Manteca, Ripon, Stockton, Tracy		
Land Area (Square Miles):	1,400		
Land Area in Farms (Acres-2007):	737,503		
Total Cropland (Acres-2007):	492,032		
Irrigated Cropland (Acres- 2007):	453,980		
Number of Farms (2007):	3,624		
Average Size of Farms (Acres-2007):	204		
Agricultural Work Force (Monthly Average-2007):	23,037		
Lowest Elevation in County (Delta Area):	12’ Below Sea Level		
Highest Elevation in County (Southwest Hills):	3065’ Above Sea Level		
Length of County (North to South):	75 Miles		
Length of County (East to West):	65 Miles		
Average January Temperature (F)	46		
Average July Temperature (F)	76		
Average Annual Rainfall:			
North County:	16 Inches	South County:	14 Inches
East County:	12 Inches	West County:	9 Inches

A SPECIAL "THANK YOU"

The San Joaquin County Agricultural Commissioner's Office expresses its appreciation to the



and



for their contributions to the 2012 Crop Report. We would also like to thank the San Joaquin County Cooperative Extension for their assistance. Without their support the publication of this report would not be possible.

AGRICULTURAL COMMISSIONER'S OFFICE
SAN JOAQUIN COUNTY
2101 East Earhart Avenue, Suite 100
Stockton, CA 95206

