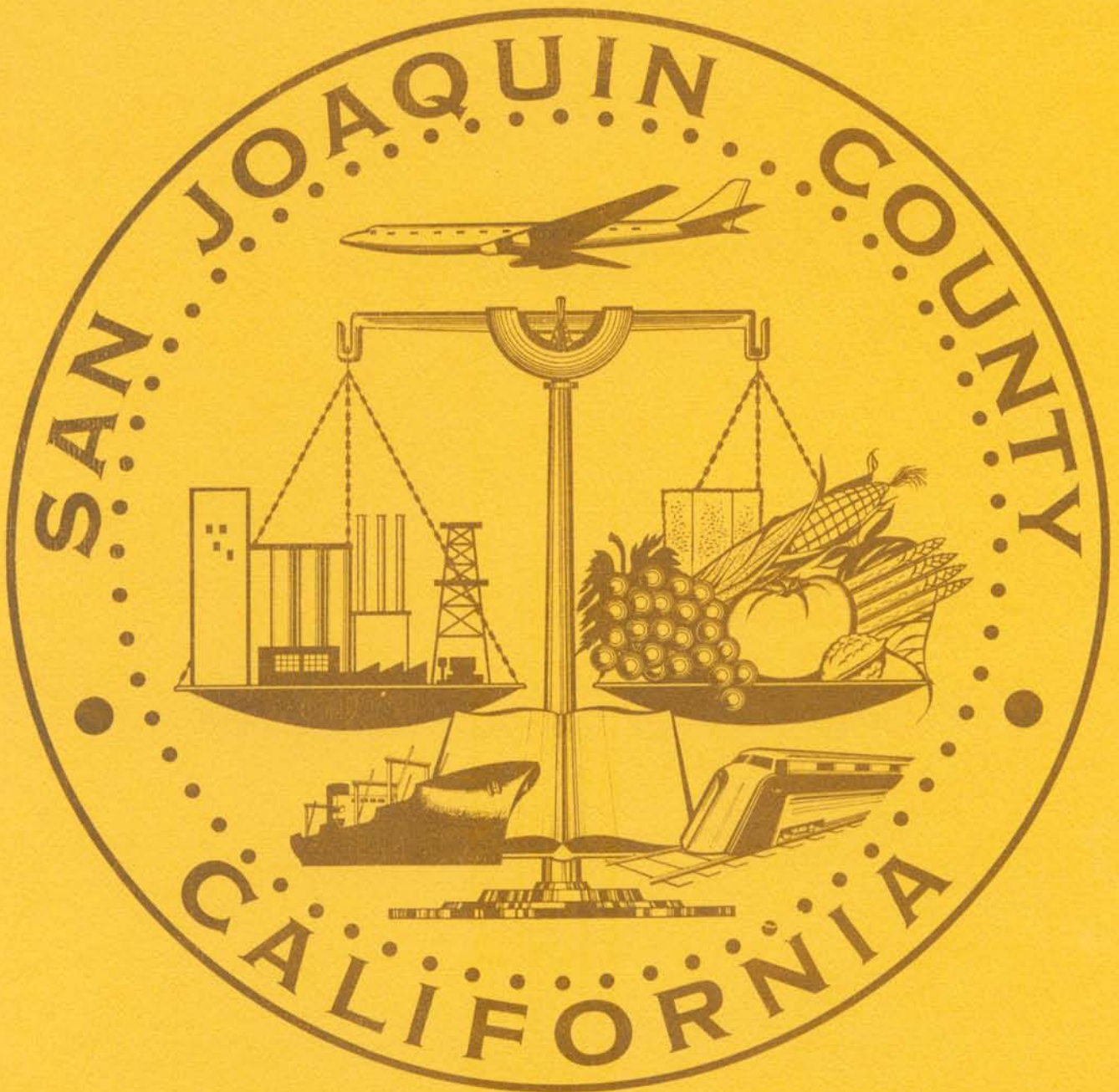


1968



AGRICULTURAL REPORT

San Joaquin County Department of Agriculture



RICHARD E. DEVOL
AGRICULTURAL COMMISSIONER

SAN JOAQUIN COUNTY

Department of Agriculture

1868 EAST HAZELTON AVENUE
STOCKTON, CALIFORNIA 95201

P. O. BOX 1809 - PHONE 944-2693

LODI OFFICE
210 N. SACRAMENTO ST.

MANTECA OFFICE
392 S. MOFFATT BLVD.

TRACY OFFICE
503 E. 10TH STREET

ESCALON OFFICE
1540 ROOSEVELT ST.

TO THE STATE DIRECTOR OF AGRICULTURE
AND
THE HONORABLE BOARD OF SUPERVISORS

Gentlemen:

In accordance with Section 2279 of the California Agricultural Code, I am pleased to present the thirty-fifth annual report of agricultural production in the County of San Joaquin.

Values are based on the most common method of sale for the individual commodity, except fresh market fruit and vegetables, whose value is based on packed price F.O.B. shipping point.

Figures presented in this report do not reflect NET income to farmers but only the GROSS value of agriculture production.

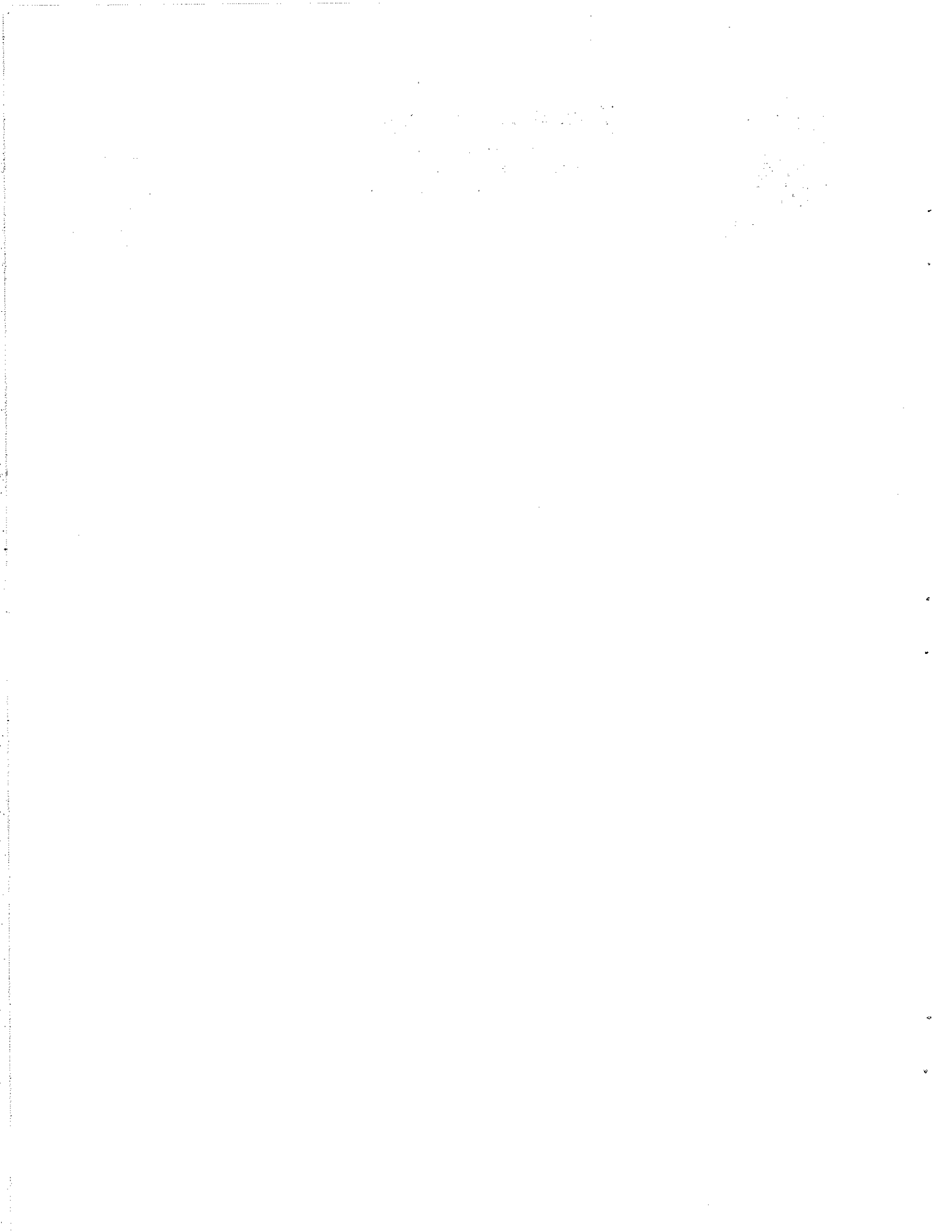
Farmer costs have steadily risen while the value of farm products have not kept up with this trend. Only through increased production from improved farming practices has the farmer been able to survive the "Cost Price Squeeze".

The gross value of agriculture products for 1968 was \$248,975,845., an increase of \$13,711,376. over the year 1967. This increase in value is mainly due to increased value in Vegetable and Fruit & Nut crops.

I wish to express my sincere appreciation to all who have assisted my inspectors and deputies by furnishing necessary information to them which has made the compilation of this report possible.

Respectfully submitted,

Richard E. DeVol
Agricultural Commissioner



S A N J O A Q U I N C O U N T Y

DEPARTMENT OF AGRICULTURE

RICHARD E. DEVOL
Agricultural Commissioner

1968 ANNUAL CROP REPORT

Compiled by

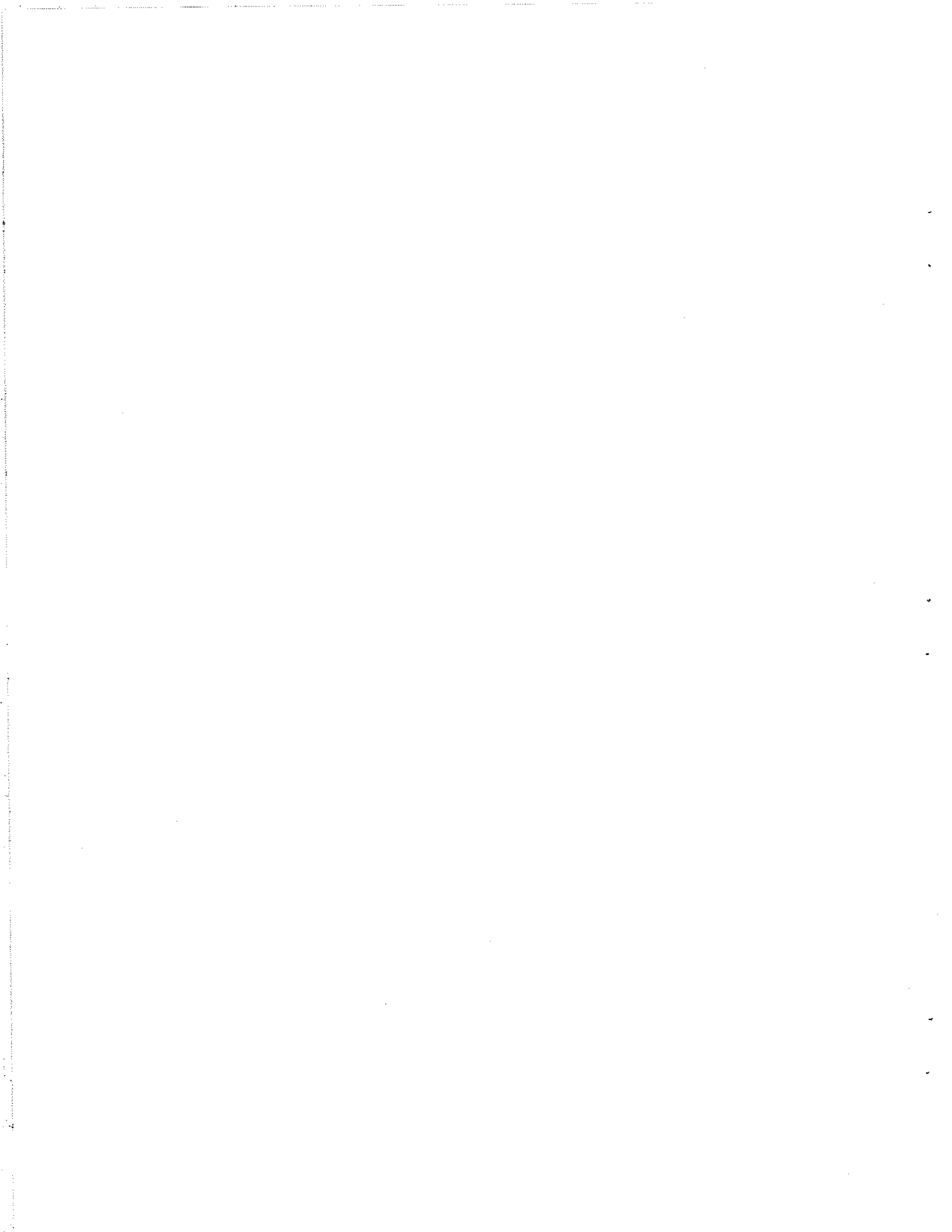
GEORGE J. STIPE
Deputy Agricultural Commissioner

B O A R D O F S U P E R V I S O R S

CARMEN PERINO	District 1
CLIFFORD C. WISDOM	District 2
GARY A. WILER	District 3
VERNON F. LEHMAN, Chairman	District 4
FRANK L. HOYT	District 5

COUNTY ADMINISTRATOR

CHARLES P. KENYON



PERSONNEL

STOCKTON OFFICE

1868 E. Hazelton Avenue

944-2693

Richard E. DeVol	Agricultural Commissioner
Erwin B. Eby	Assistant Commissioner
Walton A. Bauer	Deputy Commissioner
George J. Stipe	Deputy Commissioner
Marvin J. Switzenberg	Deputy Commissioner
John L. Joos	Entomologist
Arthur V. Moretto	Nematologist
Robert A. Croce	Calaveras District
David C. Frieders	Plant Quarantine, Seed
Kenneth W. Jones	Linden District
R. Dale Odneal	Standardization, Plant Quarantine
John R. Solari	Island District
David A. Thompson	French Camp District
Norman L. Gerber	Inspector's Aide

ESCALON OFFICE

1540 Roosevelt Street

838-2276

MANTECA OFFICE

392 S. Moffat Boulevard

823-3221

Joseph F. Silva	Deputy Commissioner
Allen L. Bugbee	Escalon District
Wilbur F. Cook	Ripon District
William E. Long	Manteca District

LODI OFFICE

210 N. Sacramento Street

368-2757

Leslie G. Todd	Deputy Commissioner
Jack B. Gianelli	Terminus District
Ray A. Mahoney	Victor District
Frank H. Newhall	Lockeford/Clements District
Paul Switzenberg	Thornton District

TRACY OFFICE

503 E. 10th Street

835-5903

Wilfred A. McDaniel	Deputy Commissioner
Merion W. Duren	Tracy District
Mark G. Huffaker	Tracy District

SHOP, WEED & RODENT CONTROL

CLERICAL STAFF

Richard Raney	Clinton C. McCarty	Melanie Asher	Marjorie Peery
Elwyn Arnold	Frank Ramalho	Ethel Kenney	Louise Pulliam
Walter A. Beck	Archie J. Shields		
Herbert W. Callen	Jerald T. Tarwater		
Donald E. Fehling	Richard Wengert		
Merle D. Worthen			

SAN JOAQUIN COUNTY 1968
 AGRICULTURAL COMMISSIONER'S REPORT
 FIELD CROPS: ACREAGE, PRODUCTION, AND VALUE, 1968 & 1967

Crop	Year	Harvested Acreage	Production		Unit	Value	
			Per Acre	Total		Per Unit	Total
Barley	1968	50,300	1.70	85,500	Ton	\$ 44.00	\$ 3,762,000
	1967	56,300	1.50	84,400		47.50	4,009,000

Planting on irrigated ground proceeded in a normal fashion. Because of lack of rainfall dry land plantings were delayed somewhat. Cool weather the latter part of 1967 retarded growth; however, warm rains the middle of January were beneficial and growth was normal. By mid-February, spraying for weed control started. Barley started to head out by the first of April. Lack of rains necessitated some irrigation and dry land grains suffered. Harvest started the latter part of May and was nearly completed by the end of July. Barley acreage was down this year but yield of irrigated grain was very good. Dry land grain was lighter in yield and weight.

Beans, Dry Total	1968	14,230	22.65	322,300	Cwt.	9.66	3,113,000
	1967	8,635	17.09	147,530		13.94	2,056,100
Blackeye	1968	3,830	21.20	81,200	Cwt.	7.25	589,000
	1967	2,860	16.15	46,200		12.50	577,000
Kidney	1968	4,100	17.10	70,100	Cwt.	15.60	1,094,000
	1967	2,480	15.90	39,400		14.00	551,600
Lima	1968	5,900	28.00	165,000	Cwt.	8.30	1,370,000
	1967	2,780	19.50	54,200		15.25	827,000
Others	1968	400	15.00	6,000	Cwt.	10.00	60,000
	1967	515	15.00	7,730		13.00	100,500

There was a considerable increase in acreage this year. Planting started about the first of May and continued into July. Summer growth was somewhat slower than normal because of cool weather. The usual insect and mite problems occurred. Harvest started by the first of October and yields were exceptionally good. There was difficulty harvesting some late fields because of rain.

Corn	1968	33,300	3.15	104,900	Ton	52.00	5,455,000
	1967	35,200	3.20	112,600		47.40	5,337,000

Planting started by mid-April. Growth was satisfactory although retarded somewhat by the cool summer. Cutworms and wireworms caused some problems in May and mites were a problem in August. Spraying for weed control had started by the middle of May. Harvest started in September and was virtually all harvested by the end of November. Acreage, yields, and prices were about the same as previous years.

Hay, Total	1968	88,600	5.67	502,600	Ton	26.37	13,253,600
	1967	90,820	5.43	493,490		28.43	14,030,000
Alfalfa	1968	66,500	6.80	452,200	Ton	27.00	12,209,000
	1967	67,600	6.60	446,200		29.00	12,940,000

FIELD CROPS: ACREAGE, PRODUCTION, AND VALUE, 1968 & 1967 cont'd

Crop	Year	Harvested Acreage	Production		Unit	Value	
			Per Acre	Total		Per Unit	Total
Hay cont'd							
Grain	1968	14,200	3.00	42,600	Ton	\$ 21.00	\$ 894,600
	1967	11,400	3.15	35,900		23.30	836,500
Wild	1968	1,500	2.00	3,000	Ton	18.00	54,000
	1967	2,020	2.00	4,040		20.00	80,800
Straw	1968	6,400	.75	4,800	Ton	20.00	96,000
	1967	9,800	.75	7,350		23.50	172,700

Acres, yields, and prices were near normal. Alfalfa growth started in late February. By the end of March, the first cutting was underway. Rain, the first of April, caused some damage. Weevils were a problem in late March; worms and aphid were a problem in September. A heavy rain storm in the southern part of the county, the last of August, caused some damage in that area. Grain hay harvest started the latter part of March and continued until the first part of May.

Oats	1968	2,900	.53	1,540	Ton	55.00	84,700
	1967	2,145	.75	1,610		55.00	88,600

Yields were poor again this year but price remained good. Growing conditions were the same as barley.

Pasture & Range, Total	1968	365,900			Acre	17.26	6,317,000
	1967	367,520				18.17	6,678,000
Irrigated	1968	93,600			Acre	55.00	5,148,000
	1967	95,000				55.00	5,225,000
Range	1968	145,000			Acre	5.00	725,000
	1967	145,000				7.00	1,015,000
Sudan	1968	2,300			Acre	30.00	69,000
	1967	2,520				25.00	63,000
Stubble	1968	125,000			Acre	3.00	375,000
	1967	125,000				3.00	375,000

Water was plentiful and growth of irrigated pastures about normal. Acreage is down, as more land is being planted to row crops. Rains during the middle of January, and mild weather, were beneficial to range pastures. The end of January was cold and dry, but by the middle of February the range forage was rapidly improving. By late April, the soil had dried and the plants started to mature. By the middle of June the range was dry and brown. The first rains of October started the renewal cycle. Pastures were green again, by mid-November.

Rice	1968	8,550	2.60	22,200	Ton	97.00	2,150,000
	1967	6,900	2.68	18,500		95.00	1,758,000

Acreage is up due to an increase in allotment. The cool summer temperature did effect the yield in some fields. Yield is down a little, with price showing a slight increase. Most acreage was treated for weed control. Harvest started about the first of October. Late fields had difficulty with harvest because of rains.

FIELD CROPS: ACREAGE, PRODUCTION, AND VALUE, 1968 & 1967 cont'd

Crop	Year	Harvested Acreage	Production		Unit	Value	
			Per Acre	Total		Per Unit	Total
Safflower	1968	5,300	1.40	7,400	Ton	\$ 82.50	\$ 610,500
	1967	9,510	1.30	12,400		90.00	1,116,000

There was considerable decrease in acreage this year. Planting began around the first of March and bloom about the first of May. Harvest began the latter part of August. Yield was normal but price depressed.

Silage, Corn	1968	8,700	22.00	191,400	Ton	7.60	1,455,000
	1967	9,110	21.00	191,300		9.50	1,817,000

Acreage and yield were near normal, however price was considerably lower. Plantings started the latter part of May and continued into July. Harvest of early planted fields started the middle of August. A few late fields were harvested the first part of November.

Sorghum, Grain	1968	22,700	2.75	62,400	Ton	46.00	2,870,000
	1967	26,200	2.50	65,500		46.25	3,029,000

Planting started the middle of April and continued into late July. Harvest started in September, with some acreage still unharvested in December. There was difficulty harvesting late fields because of rains, and much grain had to be dried.

Sugar Beets	1968	20,200	25.70	520,000	Ton	13.70	7,124,000
	1967	17,500	20.00	350,000		12.85	4,498,000

Harvest of over-wintered sugar beets started the first of March, but was stopped by rains and did not resume until the end of March, continuing until the end of May. Planting of this years crop started the middle of April. Harvest started the early part of September and continued active until the middle of November, when rains put a temporary halt to the harvest; from then on harvest was intermittent, as weather permitted, on into December. Acreage, yield, and price were all up this year.

Sunflowers	1968	5,380	.87	4,680	Ton	200.00	936,000
	1967	5,000	1.26	6,300		165.00	1,040,000

This specialty crop is grown primarily in the Island district of the Delta. Yield was poor this year, but price exceptionally good.

Wheat	1968	8,200	1.80	14,800	Ton	47.00	695,600
	1967	7,700	1.60	12,300		50.50	621,000

Wheat acreage was up, with increased yields per acre. Quality was not the best, and price was slightly lower than last year.

TOTAL	1968	634,260					\$ 47,826,400
	1967	642,540					46,077,700

FIELD CROPS: ACREAGE, PRODUCTION, AND VALUE, 1968 & 1967 cont'd

Crop	Year	Harvested Acreage	Production		Per Unit	Value	
			Per Acre	Total		Per Unit	Total
Feed Grain Program		1968					
Corn		1,997 1,855	Planted..price support Diverted..payment			\$	61,559 45,231
Grain Sorghum		747 284	Planted..price support Diverted..payment				19,947 10,495
Barley		0	XXXXXX				0
Wheat		2,254 0	Planted..price support XXXXXX				199,676 0
Crop Land Adjustment*		368					5,212
Land Under Soil Bank		<u>3,368</u>					<u>41,645</u>
TOTAL		10,873				\$	383,765
Feed Grain Program		1967					
Corn		1,065 50				\$	30,482 2,169
Grain Sorghum		177 163					4,322 9,685
Barley		0					0
Wheat		2,391 0					178,518 0
Crop Land Adjustment*		415					5,963
Land Under Soil Bank		<u>3,368</u>					<u>47,067</u>
TOTAL		7,629				\$	278,206
GRAND TOTAL	1968	645,133				\$	48,210,165
	1967	650,169					46,355,906

* Added this year

SAN JOAQUIN COUNTY 1968
 AGRICULTURAL COMMISSIONER'S REPORT
 VEGETABLE CROPS: ACREAGE, PRODUCTION, AND VALUE, 1968 & 1967

Crop	Year	Harvested Acreage	Production		Unit	Value	
			Per Acre	Total		Per Unit	Total
Asparagus	1968	28,800	1.73	49,900	Ton	\$ 356.91	\$ 17,810,000
Total	1967	31,100	1.46	45,400		319.67	14,513,000
Fresh	1968		.57	16,300	Ton	400.00	6,520,000
	1967		.39	12,100		360.00	4,356,000
Processing	1968		1.16	33,600	Ton	336.00	11,290,000
	1967		1.07	33,300		305.00	10,157,000

Growers started working their asparagus beds the first part of February. The first asparagus was harvested the latter part of February and moved quite rapidly until the middle of March, when rain, winds, and frosts, slowed harvest activities. By the end of March some diversion to the processor had occurred. Again in April, scattered frosts nipped some fields. Early May saw most production going to the processor. By the end of June, most fields were allowed to go to fern. Yield was one of the highest on record, quality was generally good as well as price.

Beans, Snap	1968*	5,400	2.00	10,800	Ton	97.00	1,048,000
	1967	2,480	2.40	5,950		90.00	536,000

The bulk of the plantings went to the processor this year. There was very little acreage harvested for seed. Yields were good, but grading for quality was quite strict, and there was a heavy dockage. This reduced the yield considerably.

Cabbage	1968	30	13.00	390	Ton	54.00	21,100
	1967	47	15.00	700		54.00	37,800
Carrots	1968	480	17.00	8,200	Ton	90.00	738,000
	1967	640	15.00	9,600		100.00	960,000

Price was good this year, although not up to last years price. Production was better than average. There was quite a drop in acreage this year.

Cauliflower	1968	320	4.00	1,280	Ton	165.00	211,200
	1967	180	4.50	810		170.00	138,000

Most of the cauliflower crop was raised for the freezer. Harvest started the first part of October and continued until the end of the year. Several sprayings were necessary this year to control looper. There was a good increase in acreage; both yield and price were down slightly.

Corn, Sweet	1968	100	225.00	22,500	46#)	2.80	63,000
	1967	110	200.00	22,000	pkg)	2.00	44,000

Acreage was about the same as last year. Both yield and price were higher.

* Includes processing lima beans

VEGETABLE CROPS: ACREAGE, PRODUCTION, AND VALUE, 1968 & 1967 cont'd

Crop	Year	Harvested Acreage	Production		Unit	Value	
			Per Acre	Total		Per Unit	Total
Cucumbers	1968*	1,610	11.70	18,800	Ton	\$ 83.80	\$ 1,575,000
	1967	1,550	13.00	20,200		72.10	1,456,000

Labor for hand picking was again short this year, as growers experienced labor problems. Both quality and price were better than last year. Acreage showed a slight increase, production was down a little.

Lettuce, head	1968	665	350.00	232,800	43#)	1.75	407,400
	1967	454	533.00	242,000	pkg)	1.81	438,000

Acreage increased 50% this year. Quality was excellent; tip burn, slime, and worms were at a minimum. Harvest started the first of October and progressed steadily until the first of November, when market conditions became very unstable. Harvest continued throughout November at a reduced rate, as market conditions warranted. By the first of December, harvest was completed.

Melons, Total	1968	1,850	11.24	20,790	Ton	32.81	682,100
	1967	2,251	11.73	26,393		25.63	676,400
Cantaloupe	1968	100	6.90	690	Ton	54.50	37,600
	1967	371	5.50	2,040		79.00	161,000
Casaba	1968	400	8.50	3,400	Ton	29.00	98,600
	1967	413	12.00	4,960		19.00	94,200
Cranshaw	1968	90	10.00	900	Ton	115.00	103,500
	1967	107	9.28	993		53.55	53,200
Watermelon	1968	1,260	12.50	15,800	Ton	28.00	442,400
	1967	1,360	13.50	18,400		20.00	368,000

All melons enjoyed good growing conditions this year. Melons were of good quality, with demand favorable.

Onions, dry Total	1968	1,890	834.39	1,577,000	50#)	1.59	2,501,000
	1967	2,330	863.52	2,012,000	sack)	1.46	2,939,000
Early	1968	1,400	855.00	1,197,000		1.55	1,855,000
	1967	1,880	855.00	1,607,000		1.35	2,169,000
Late	1968	490	775.00	380,000		1.70	646,000
	1967	450	900.00	405,000		1.90	770,000

It is becoming quite difficult to distinguish between early and late onions, as harvest is continuous once it has started. The first onions were harvested for local markets the latter part of April; however, it was late May before harvest got underway in earnest. Harvest continued until late September. Quality was only fair, there was considerable neck rot and many onions broke down in shipment.

* Statistics supplied by California Crop & Livestock Report Service

VEGETABLE CROPS: ACREAGE, PRODUCTION, AND VALUE, 1968 & 1967 cont'd

Crop	Year	Harvested Acreage	Production		Unit	Value	
			Per Acre	Total		Per Unit	Total
Peppers	1968	1,100	12.00	13,200	Ton	\$ 85.00	\$ 1,122,000
	1967	813	12.20	9,920		80.25	796,000

Acreage increased for peppers this year. Yield and price were about average. Transplanting was underway in late April, with harvest starting the middle of August, continuing into December. Peppers went for fresh market, processing, and for seed. Aphids were a serious pest in 1968.

Potatoes	1968	3,820	315.00	1,203,000	Cwt.	2.30	2,767,000
	1967	3,580	230.00	823,000		2.80	2,304,000

Planting started the last of March. Spring frosts burned back some acreage, most of which recovered; otherwise, the growing season was normal. Yield and quality were good. Early prices were poor, however, the market firmed and later sales showed a good return.

Pumpkins	1968	715	27.50	19,700	Ton	15.00	295,000
	1967	810	15.00	12,200		14.00	171,000
Squash	1968	290	11.00	3,200	Ton	33.75	108,000
	1967	360	13.50	4,900		25.00	123,000

Demand was much improved this year for squash and pumpkins. Quality was good and prices firm. The cooler growing season seemed beneficial to these crops.

Sweet Potatoes	1968	250	150.00	37,500	40#)	3.00	112,000
	1967	320	375.00	120,000	ctn)	1.25	150,000

Acreage in San Joaquin County continues to decline; disease, varieties grown, and soil conditions, all contribute. Yields and quality were only fair.

Tomatoes, Total	1968	51,700	21.15	1,093,500	Ton	40.47	44,256,000
	1967	49,200	19.92	980,000		42.40	41,552,000
Shipping	1968			52,500	Ton	145.00	7,613,000
	1967			34,000		137.00	4,658,000
Processing	1968			1,041,000	Ton	35.20	36,643,000
	1967			946,000		39.00	36,894,000

The first direct seeding started the last of February. Transplanting was underway by late March. By the first of May, most tomatoes had been planted; however, a few late tomatoes were planted the first part of June. Green tomato harvest for fresh market started the last of July. Processing tomato harvest started the first of August. Harvesting was completed by the first of November. The green tomato grower did well on early and late tomatoes. The mid-season greens were only fair. Processing tomatoes had good quality and yield.

VEGETABLE CROPS: ACREAGE, PRODUCTION, AND VALUE, 1968 & 1967 cont'd

Crop	Year	Harvested Acreage	Production Per Acre	Total Unit	Value	
					Per Unit	Total
Beets, Green	1968*	640				\$ 161,000
Peas, Spinach	1967	525				90,000
Truck Garden	1968	2,700				2,500,000
	1967	2,200				2,400,000
TOTAL	1968	102,360				\$ 76,377,800
	1967	98,950				69,324,200

* Beet & Pea statistics supplied by California Crop & Livestock Reporting Service

SAN JOAQUIN COUNTY 1968
 AGRICULTURAL COMMISSIONER'S REPORT
 FRUIT AND NUT CROPS: ACREAGE, PRODUCTION, AND VALUE, 1968 & 1967

Crop	Year	Production			Value		
		Harvested Acreage	Acre	Total	Unit	Per Unit	Total
Almonds	1968	18,934	.58	11,000	Ton	\$ 580.00	\$ 6,380,000
	1967	14,534	1.00	14,500		600.00	8,700,000
Almond Hulls*	1968			5,000	Ton	10.00	50,000
	1967			7,500		10.00	75,000

The almond crop was lighter this year, partly due to the short blooming period. Bees were not able to do an adequate job of pollination. Pink bud stage occurred prior to mid-February. Hail, the latter part of March, knocked some small nuts to the ground. A cloudburst the latter part of August went through part of the Tracy area, and many nuts which had already been knocked, were literally washed away. A sizeable new acreage came into production this year. New plantings continue to add to the non-bearing acreage. Pest conditions remained about the same as in the past.

Apricots	1968*	2,474	8.73	21,600	Ton	155.00	3,348,000
	1967	2,646	6.70	17,700		130.00	2,301,000

Yield and price were excellent this year. There were no particular problems during the growing season. Adequate spray programs kept worms and brown rot in check.

Bushberries	1968	(added to misc.)			Ton		
	1967	68	3.66	249		280.00	69,700
Cherries, Total	1968	8,295	2.39	19,860	Ton	540.94	10,743,000
	1967	7,873	1.95	15,330		592.31	9,080,000
Fresh Market	1968			11,000	Ton	735.00	8,085,000
	1967			8,680		755.00	6,553,000
Processing	1968*			8,860	Ton	300.00	2,658,000
	1967			6,650		380.00	2,527,000

Cherries started to bloom the first part of March. By the end of April, harvest had started. Brown rot gave some trouble following rains the middle of May. Some orchards were not harvested due to the high percentage of doubles; doubles also caused additional labor costs, due to sorting of the fruit.

* Production figures supplied by California Crop & Livestock Reporting Service

FRUIT AND NUT CROPS: ACREAGE, PRODUCTION, AND VALUE, 1968 & 1967 cont'd

Crop	Year	Harvested Acreage	Production		Unit	Value	
			Per Acre	Total		Per Unit	Total
Grapes, All Total	1968	45,817	5.58	255,601	Ton	\$ 80.48	\$ 20,572,400
	1967	45,900	6.53	299,581		66.11	19,805,300
Table, All Total	1968	23,382	5.84	136,501	Ton	76.77	10,479,400
	1967	23,500	7.51	176,381		61.51	10,849,300
Tokay, Total	1968	22,275	5.86	130,460	Ton	78.13	10,193,000
	1967	22,400	7.35	164,631		62.59	10,304,000
Fresh	1968			2,520,000	26#) pkg)	2.30	5,796,000
	1967			1,587,000		2.90	4,602,000
Crushed	1968			97,700	Ton	45.00	4,397,000
	1967			144,000		39.60	5,702,000
Other Table, Total	1968	1,107	5.46	6,041	Ton	47.41	286,400
	1967	1,100	10.68	11,750		46.41	545,300
Fresh	1968			26,200	26#) pkg)	2.00	52,400
	1967			42,300		2.30	97,300
Crushed	1968			5,700	Ton	41.00	234,000
	1967			11,200		40.00	448,000
Wine Varieties Total	1968	22,435	5.31	119,100	Ton	84.74	10,093,000
	1967	22,400	5.50	123,200		72.69	8,956,000
Fresh	1968			23,100	Ton	146.00	3,373,000
	1967			21,200		153.00	3,244,000
Crushed	1968			96,000	Ton	70.00	6,720,000
	1967			102,000		56.00	5,712,000

A general frost on March 20th, damaged spurs with well swollen buds; also, shoots up to one inch long. This cold snap nipped up to 20% of the buds and shoots. Again on April 18th, a frost severely hit several thousand acres. Replacement shoots were for the most part, unfruitful. Quality and sugar at harvest time were good, but yields were down.

Nectarines	1968	106	6.50	689	Ton	260.00	179,000
	1967	112	3.50	390		267.00	104,000

Production and quality were very good this year. Price was about the same as last year.

Olives	1968	210	3.70	777	Ton	330.00	256,000
	1967	210	.50	105		450.00	47,300

Due to the heavy bloom and excellent set, yield was well above average. Quality was excellent and the price good.

FRUIT AND NUT CROPS: ACREAGE, PRODUCTION, AND VALUE, 1968 & 1967 cont'd

Crop	Year	Harvested Acreage	Production		Unit	Value	
			Per Acre	Total		Per Unit	Total
Peaches, All Total	1968	7,694	9.83	75,640	Ton	\$ 79.50	\$ 6,013,000
	1967	7,410	9.35	69,280		83.50	5,785,000
Clingstone Processing	1968*	7,137	9.04	64,500	Ton	76.00	4,902,000
	1967	6,850	9.00	61,700		83.00	5,121,000
Freestone Total	1968	557	20.00	11,140	Ton	99.77	1,111,000
	1967	560	13.54	7,580		87.60	664,000
Fresh	1968			153,000	24#)	2.55	390,000
	1967			73,400	pkg)	2.65	195,000
Processing	1968*			9,300	Ton	77.50	721,000
	1967			6,700		70.00	469,000

Freestone peaches had a very good season with price and yield above average. Quality was very good. Clingstone peaches were of good quality with yield about the same as last year. Pest problems were about average. Frost on April 18th did some damage. Again this year, all peach and nectarine orchards were surveyed for the virus disease, Yellow Leaf Roll. The incident of this disease was about three times higher than 1967.

Pears, Fresh & Processing	1968*	996	4.22	4,200	Ton	121.00	508,000
	1967	850	1.45	1,200		180.00	216,000

Pears were much better this year, however, frost on April 18th did considerable damage in the Linden area.

Plums, Fresh & Processing	1968*	625	1.85	1,160	Ton	270.00	313,000
	1967	627	1.46	914		315.00	288,000

Bloom started the last of February, by the second week of March, plums had reached the petal fall stage and started to leaf out. Even with a heavy drop of small fruit, there was still some thinning done the middle of May. Harvest started the first week in June and continued until the middle of August. Production was a little better than last year, but price was decidedly lower.

Strawberries, Total	1968	134	7.40	992	Ton	378.43	375,400
	1967	150	4.13	620		407.26	252,500
Fresh	1968			456	Ton	400.00	182,400
	1967			90		605.00	54,500
Processing	1968			536	Ton	360.00	193,000
	1967			530		374.00	198,000

Harvest started in mid-April and continued until the last of June. Quality was good throughout the season. Production was very good with a little more than half of the crop going to the processors. Price was less than last year, especially for fresh market berries.

* Production figures supplied by California Crop & Livestock Reporting Service, Processing & Fresh Market Combined Freestone Peach Assn.

FRUIT AND NUT CROPS: ACREAGE, PRODUCTION, AND VALUE, 1968 & 1967 cont'd

Crop	Year	Harvested Acreage	Production Per Acre	Total	Unit	Value	
						Per Unit	Total
Walnuts, English	1968*	20,999	.66	13,900	Ton	\$ 700.00	\$ 9,730,000
	1967	20,250	.75	15,200		570.00	8,664,000
Walnuts, Black	1968	500	.50	250	Ton	50.00	12,500
	1967	535	.50	268		50.00	13,400

The frost on April 18th, blackened many young shoots in the Linden and Lodi areas. New shoots were produced which were fruitful, producing a normal crop. There were 750 acres of young orchard which came into bearing this year. The lighter production of these young trees lowered the overall yield per acre. Aphid and Husk Fly required their usual control measures. Nut quality was good and price set an all time record high.

Misc. (apples,	1968	550					264,000
figs, oranges,	1967	550					220,000
chestnuts, pecans, persimmons, prunes, bushberries)							

TOTAL	1968	107,334					\$ 58,744,300
	1967	101,715					55,621,200

* Production figures supplied by California Crop & Livestock Reporting Service

SAN JOAQUIN COUNTY 1968
 AGRICULTURAL COMMISSIONER'S REPORT
 SEED CROPS: ACREAGE, PRODUCTION, AND VALUE, 1968 & 1967

Crop	Year	Harvested Acreage	Production		Unit	Value	
			Per Acre	Total		Per Unit	Total
Alfalfa	1968	73	650.	47,500	Lb.	\$.40	\$ 19,000
	1967	145	400.	58,000		.45	26,100
Asparagus	1968			9,800	Lb.	2.50	24,500
	1967			7,000		2.00	14,000
Barley	1968	2,864	2,400.	6,874,000	Lb.	.025	172,000
	1967	3,000	3,500.	10,500,000		.025	263,000
Beans, Certified Seed							
Dark Red	1968	1,800	16.	28,800	Cwt.	16.50	475,000
Kidney	1967	2,100	13.3	28,000		17.50	490,000
Light Red Kidney	1968	4,200	17.	71,400	Cwt.	17.00	1,214,000
	1967	3,600	16.	57,600		17.50	1,008,000
White	1968	160	20.	3,200	Cwt.	10.00	32,000
	1967	142	17.	2,400		15.00	36,000
Blackeye	1968	230	15.	3,450	Cwt.	8.00	27,600
	1967	66	13.2	870		12.50	10,875
Snap Beans	1968	10	24.	240	Cwt.	18.00	4,320
	1967	1,500	12.75	19,100		18.50	353,000
Others	1968	85	15.	1,300	Cwt.	10.00	13,000
	1967	40	15.	600		13.00	7,800
Clover	1968	540	450.	243,000	Lb.	.74	180,000
	1967	310	400.	124,000		.55	68,200
Oats	1968	1,233	1,500.	1,850,000	Lb.	.026	48,100
	1967	530	1,500.	795,000		.027	21,500
Ornamental Seed	1968	240	315.	75,600	Lb.	1.35	102,000
	1967	175	225.	39,400		1.40	55,200
Potatoes	1968	1,400	295.	413,000	Cwt.	4.00	1,652,000
	1967	1,460	270.	394,000		4.00	1,576,000
Sudan	1968	330	1,500.	495,000	Lb.	.065	32,200
	1967	415	2,500.	1,038,000		.06	62,300
Vegetable Seed	1968	761	233.	177,000	Lb.	2.13	377,000
	1967	340	175.	59,500		1.65	98,200
Wheat	1968	538	3,000.	1,614,000	Lb.	.030	48,400
	1967	155	3,500.	543,000		.030	16,300
TOTAL	1968	14,464					\$ 4,421,120
	1967	13,978					4,106,475

SAN JOAQUIN COUNTY 1968
 AGRICULTURAL COMMISSIONER'S REPORT
 NURSERY PRODUCTS: PRODUCTION AREA, SALES AND VALUES, 1968 & 1967

Item	Year	Production Area		Quantity sold by Producers	Unit	Value		
		House sq.ft.	Field Acres			Per Unit	Total	
Nursery Crops								
Deciduous Fruit & Nut Trees*	1968		27.0	540,000	Plant	\$1.20	\$648,000	
	1967		31.5	621,000		1.15	714,000	
Grape Vines	1968		10.0	185,000	Plant	.18	33,300	
	1967		27.0	499,500		.18	89,900	
Vegetable Plants								
field grown, Total	1968			132,100,000	Plant		820,200	
	1967			112,425,000			535,600	
Asparagus	1968			51,300,000		.01	513,000	
	1967			33,750,000		.01	337,500	
Celery	1968			300,000		.009	2,700	
	1967			400,000		.009	3,600	
Onions	1968			60,000,000		.001	60,000	
	1967			65,000,000		.001	65,000	
Peppers	1968			10,500,000		.009	94,500	
	1967			3,275,000		.009	29,500	
Tomatoes	1968			10,000,000		.015	150,000	
	1967			10,000,000		.01	100,000	
Ornamental Trees & Shrubs**	1968		27.5	560,000	Plant	1.10	616,000	
	1967		27.0	574,000		1.10	631,000	
Bedding Plants	1968	29,000		45,000	Flat	2.35	105,750	
	1967	30,500		50,000		2.29	114,500	
Herbaceous Perennials	1968	185,000		2,170,000	Plant	.29	629,300	
	1967	145,000		1,772,500		.29	514,000	
Indoor Decorative Plants	1968	97,200		155,500	Plant	1.48	230,140	
	1967	92,000		147,200		1.50	221,000	
Cacti & Succulents	1968	26,000		52,000	Plant	.35	18,200	
	1967	21,000		85,000		.20	17,000	
Bulbs, Rhizomes, Roots, etc.	1968		6.0	24,000	Each	1.35	32,400	
	1967		6.5	12,000		1.00	12,000	
Propagative Materials, pits, budwood, cuttings, etc.	1968			800,000	Each	.07	56,000	
	1967			750,000		.07	52,500	
Cut flowers & decoratives, lilacs	1968		8.0		Acre	100.00	800	
	1967		6.0			98.00	588	
TOTAL	1968						\$ 3,190,090	
	1967						2,902,088	

* Includes small fruit plants
 ** Includes rose plants

SAN JOAQUIN COUNTY 1968
 AGRICULTURAL COMMISSIONER'S REPORT
 LIVESTOCK AND POULTRY: PRODUCTION AND VALUE, 1968 & 1967

Item	Year	Production		Unit	Value	
		No. Head	Total Liveweight		Per Unit	Total
Cattle and Calves	1968	55,800	341,200	Cwt.	\$ 22.66	\$ 7,732,000
	1967	51,900	324,000		21.90	7,096,000
Sheep and Lambs	1968	77,900	76,000	Cwt.	20.44	1,554,000
	1967	93,600	84,000		19.50	1,638,000
Hogs and Pigs	1968	24,200	52,000	Cwt.	19.90	1,035,000
	1967	25,800	55,400		20.15	1,116,000
Broilers & Fryers	1968	2,466,000	8,631,000	Lb.	.17	1,467,000
	1967	4,579,000	16,027,000		.16	2,564,000
Other Chickens	1968	1,523,000	8,377,000	Lb.	.10	838,000
	1967	1,542,000	8,481,000		.10	848,000
Turkeys	1968	123,600	2,472,000	Lb.	.22	544,000
	1967	150,000	3,200,000		.165	528,000
Miscellaneous: Pheasant, Squab, Duck, etc.	1968	54,000		Each	2.00	108,000
	1967	50,000			2.00	100,000
TOTAL	1968	XXX				\$ 13,278,000
	1967	XXX				13,890,000

Broiler and fryer production showed a substantial decrease in 1968. Many smaller producers went out of business due to the narrow margin of profit and increased cost of production. Competition from southern and midwestern states has also contributed to this decline in local production.

APIARY PRODUCTS: PRODUCTION AND VALUE, 1968 & 1967

Crop	Year	Production		Unit	Per Unit	Total
		Total				
Honey	1968	290,000		Lb.	\$.12	\$ 34,800
	1967	812,000			.12	97,400
Beeswax	1968	2,610		Lb.	.60	1,570
	1967	12,800			.56	7,200
Pollination	1968	29,400		Colony	6.60	194,000
	1967	31,000			7.20	223,000
TOTAL	1968	XXXX				\$ 230,370
	1967	XXXX				327,600

California's honey crop was down 46 percent, the lowest since 1959. Our County's honey and beeswax production decreased sharply due to adverse weather; reducing yields in many of our honey producing crops. Many of these crops dried quickly, producing short flows. Weather and crop conditions also reduced the supply of strong colonies for crop pollination. Pesticides were responsible for some losses of bee colonies.

SAN JOAQUIN COUNTY 1968
 AGRICULTURAL COMMISSIONER'S REPORT
 LIVESTOCK AND POULTRY PRODUCTS: PRODUCTION & VALUE, 1968 & 1967

Item	Year	Production	Unit	Per Unit	Total
Milk, Total	1968	5,523,000	Cwt.	\$	\$ 25,794,000
	1967	5,326,000			23,945,000
Market	1968	4,769,000	Cwt.	4.77	22,748,000
	1967*	4,293,000		4.62	19,834,000
Manufacturing	1968	754,000	Cwt.	4.04	3,046,000
	1967*	1,033,000		3.98	4,111,000
Wool**	1968	674,000	Lb.	.67	452,000
	1967	731,000		.65	475,000
Eggs, Chicken Market	1968	67,696,000	Doz.	.270	18,278,000
	1967	66,607,000		.275	18,317,000
TOTAL	1968	XXXX			\$ 44,524,000
	1967	XXXX			42,737,000

The number of wool producing sheep in San Joaquin County has decreased. Many smaller wool growers have gone out of business. This is a trend of agriculture when volume is necessary to make a profit.

JANUARY 1 INVENTORIES OF LIVESTOCK & POULTRY, 1968 & 1967
 IN NUMBER OF HEAD

Item	January 1, 1968	January 1, 1967
Cattle & Calves, All	178,600	181,900*
Milk Cows 2 years and over	53,700	53,600*
Sheep and Lambs, All	40,000	33,100
Hogs and Pigs	8,700	10,200*
Hens & Pullets of laying age	3,385,000	3,330,000

* Revised

** Value includes government payment

SAN JOAQUIN COUNTY 1968
 AGRICULTURAL COMMISSIONER'S REPORT
 PERMANENT CROPS

Crop & Variety	Bearing Acreage	Non-Bearing Acreage	Crop & Variety	Bearing Acreage	Non-Bearing Acreage
ALMONDS			GRAPES (Raisin)		
Capareil	1.6	21.9	Muscat	23.3	0
Davey	719.6	10.4	Thompson Seedless	646.7	8.1
Drake	132.2	0	TOTAL	670.0	8.1
IXL	49.7	0	GRAPES (Table)		
Jordanolo	510.1	14.6	Almeria	11.5	0
Merced	874.6	544.3	Black Prince	47.6	0
Mission	4,405.1	716.2	Cardinal	139.3	0
Ne Plus Ultra	731.9	273.3	Cornichon	34.9	0
Nonpareil	9,951.2	2,822.5	Emperor	69.2	0
Peerless	1,492.5	46.4	Lady Fingers	8.0	0
Thompson	2.1	142.9	Malaga	25.0	0
Other	64.1	16.9	Ribier	73.6	2.0
TOTAL	18,934.7	4,609.4	Tokay	22,274.5	283.7
APPLES			Other	28.1	0
Delicious	4.9	23.7	TOTAL	22,711.7	285.7
Golden Delicious	4.7	17.4	GRAPES (Wine)		
White Astrachan	6.7	0	Alicante-Bouschet	1,384.0	12.3
Other	11.3	.3	Black Malvoisie	33.0	0
TOTAL	27.6	41.4	Burger	551.6	78.8
APRICOTS			Carignane	7,160.0	378.0
Blenheim	1,404.7	119.0	Chenin blanc	41.4	12.0
Tilton	1,059.2	444.5	Colombar	20.9	0
Other	10.4	68.0	French Columbard	142.8	0
TOTAL	2,474.3	631.5	Grenache	2,732.0	106.8
CHERRIES			Golden Chasselas	36.6	5.0
Bing	5,660.5	564.6	Gray Riesling	45.1	59.7
Black Tartarian	469.9	12.2	Mataro	10.0	0
Burbank	10.9	0	Mission	1,392.0	24.3
Burlat	73.4	99.1	Palomino	609.6	0
Chapman	75.4	0	Petite Sirah	358.1	0
Jubilee #2615	12.3	0	Pinot St. George	43.8	63.3
Lambert	299.2	8.4	Rootstock	0	41.3
Mahaleb Seedlings	3.4	191.2	Royalty	27.1	0
Morrow	24.0	0	Ruby Cabernet	77.3	17.4
Moreau	5.8	7.9	Salvador	116.0	0
Republican	15.9	0	Sauvignon blanc	10.0	0
Royal Ann	1,471.2	41.1	Semillon	36.2	0
Van	104.8	2.8	Valdepenas	258.7	4.0
Other	68.0	4.1	Zinfandel	7,167.1	588.6
TOTAL	8,294.7	931.4	Other White	0	0
CHESTNUTS (ALL)			Other Dark	181.8	19.8
CITRUS (ALL)	3.0	0	TOTAL	22,435.1	1,411.3
FIGS			NECTARINES		
FIGS	5.5	0	LeGrand	74.0	0
			Rose	6.0	0
			Sun Grand	18.0	0
			Other	8.2	0
			TOTAL	106.2	0

SAN JOAQUIN COUNTY 1968
 AGRICULTURAL COMMISSIONER'S REPORT
 PERMANENT CROPS cont'd

Crop & Variety	Bearing Acreage	Non-Bearing Acreage	Crop & Variety	Bearing Acreage	Non-Bearing Acreage
OLIVES			PEARS		
Ascolano	14.6	0	Bartlett	981.8	176.4
Manzanillo	110.4	20.0	Other	14.5	8.0
Mission	51.3	2.2	TOTAL	996.3	184.4
Olbonga	27.8	0			
Sevillanos	6.2	0	PRUNES (ALL)	74.0	33.0
TOTAL	210.3	22.2			
PEACHES-CLINGSTONE			PLUMS		
Andora	62.0	14.0	Ace	5.5	0
Carolyn	340.0	235.4	Duarte	35.8	0
Carson	142.3	101.9	El Dorado	83.3	0
Corona	182.6	21.4	Laroda	80.3	0
Cortez	359.9	0	Nubiana	29.0	0
DIX 606	762.2	77.3	President	6.3	0
Fortuna	264.7	1.9	Queen Ann	11.4	0
Gaume	723.0	116.6	Santa Rosa	189.5	1.5
Gomes	425.7	15.8	Santa Rosa, Late	9.0	0
Halford	1,755.5	279.3	Satsuma	29.1	0
Loadel	50.4	106.6	Seedlings	8.5	0
Paloro	425.3	38.6	Sugar	17.1	0
Peak	57.2	16.0	Tragedy	110.1	8.2
Shasta	37.7	0	Other	10.3	0
Sierra	48.2	0	TOTAL	625.2	9.7
Sims	17.7	8.1			
Stanford	48.4	1.0	WALNUTS-BLACK (ALL)	500.0	1,000.0
Starn	331.5	129.4			
Sullivan, Carol	94.1	0	WALNUTS-ENGLISH		
Sutter	28.7	0	Ashley	51.8	205.2
Vivian	398.6	11.2	Concord	27.0	0
Wiser	255.5	86.7	Eureka	6,256.4	498.5
Zolezzi	124.9	7.3	Franquette	3,555.0	28.3
Other	200.6	230.2	Grove	85.1	0
TOTAL	7,136.7	1,498.7	Hartley	3,708.6	630.7
PEACHES-FREESTONE			Hybrid	31.8	128.9
Alamar	14.9	0	Mayette	550.2	7.0
Early Elberta	31.1	.9	Nuggett	97.5	27.7
Elberta	372.1	37.5	Payne	6,272.7	691.4
Hale, J. H.	19.2	0	Placentia	3.1	0
La Fiesta	5.0	0	Waterloo	284.0	6.4
Lovel	8.0	0	#4949	40.4	19.4
Redhaven	18.8	0	Other	35.5	54.0
Rio Oso Gem	48.7	9.1	TOTAL	20,999.1	2,297.5
Other	39.2	4.7			
TOTAL	557.0	52.2	FINAL TOTAL ACRES		
PECANS (ALL)	.9	0		106,786.3	13,016.5

SAN JOAQUIN COUNTY 1968
AGRICULTURAL COMMISSIONER'S REPORT

SUMMARY

Item	1968	1967
Field Crops	\$ 48,210,165	\$ 46,355,906*
Vegetable Crops	76,377,800	69,324,200
Fruit & Nut Crops	58,744,300	55,621,200
Seed Crops	4,421,120	4,106,475
Nursery Products	3,190,090	2,902,088
Livestock & Poultry	13,278,000	13,890,000
Apiary Products	230,370	327,600
Livestock & Poultry Products	44,524,000	42,737,000*
TOTAL	\$ 248,975,845	\$ 235,264,469*

SAN JOAQUIN COUNTY'S TEN LEADING CROPS

<u>1968</u>			<u>1967</u>		
Crop	Acreage	Value	Crop	Acreage	Value
Tomatoes	51,700	\$ 44,256,000	Tomatoes	49,200	\$ 41,552,000
Milk	5,523,000 cwt.	25,794,000	Milk	5,326,000* cwt.	23,945,000*
Grapes	45,818	20,572,400	Grapes	45,900	19,805,300
Eggs	67,696,000 doz.	18,278,000	Eggs	66,607,000 doz.	18,317,000
Asparagus	28,800	17,810,000	Asparagus	31,100	14,513,000
Alfalfa	66,500	12,209,000	Alfalfa	67,600	12,940,000
Cherries	8,295	10,743,000	Cherries	7,873	9,080,000
Walnuts	21,499	9,742,500	Almonds	14,534	8,700,000
Beef	341,200 cwt.	7,732,000	Walnuts	20,785*	8,677,400*
Sugar Beets	20,200	7,124,000	Beef	324,000 cwt.	7,096,000
TOTAL		\$ 174,260,900			\$ 164,625,700*

* Revised

