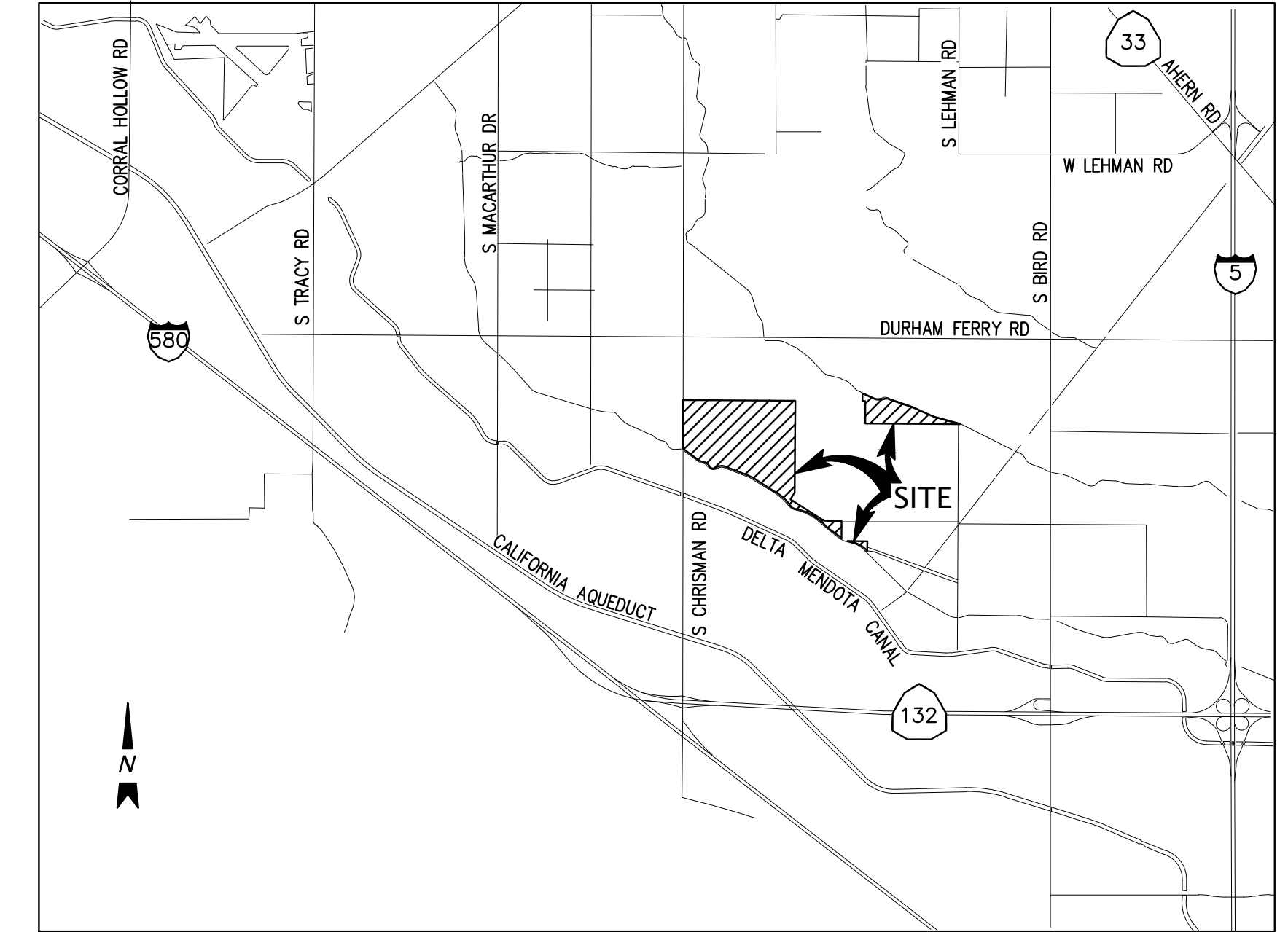


PRELIMINARY GRADING AND UTILITY PLANS FOR PACIFIC GATEWAY SAN JOAQUIN COUNTY, CALIFORNIA

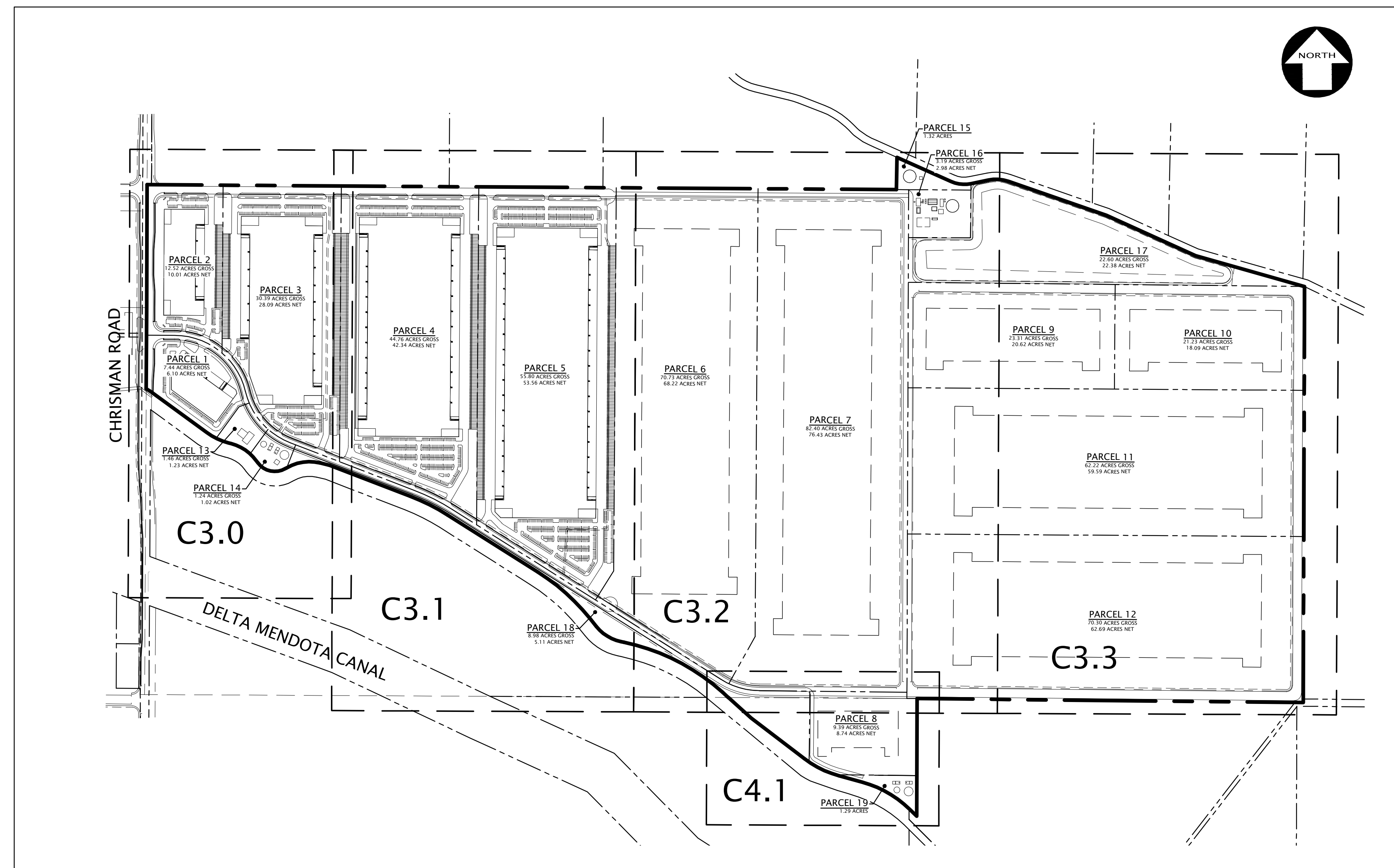


VICINITY MAP

NOT TO SCALE

SHEET INDEX

SHEET	DESCRIPTION
CIVIL	
C1.0	COVER SHEET AND KEY MAP
C2.0	TOPOGRAPHIC SURVEY
C2.1	PHASING MAP
C3.0	GRADING AND UTILITY PLAN
C3.1	GRADING AND UTILITY PLAN
C3.2	GRADING AND UTILITY PLAN
C3.3	GRADING AND UTILITY PLAN
C4.0	PRIMARY POTABLE WATER FACILITY
C4.1	SECONDARY POTABLE WATER FACILITY
C4.2	RECYCLED WATER & SEWER TREATMENT FACILITIES
C4.3	RETENTION BASIN



GRADING AND UTILITY PLAN SHEET KEY MAP

1" = 500'

BENCHMARK:

FOUND 3 1/2 INCH BRASS DISK, NGS BENCHMARK, SOUTHEAST OF THE NORTHWEST END OF THE NORTH CONCRETE ABUTMENT WINGWALL OF THE ROAD BRIDGE SPANNING THE CALIFORNIA AQUEDUCT.

BASIS OF BEARINGS:

THE BEARING OF NORTH 00° 31' 20" EAST TAKEN ON THE MONUMENT LINE OF MAC ARTHUR AS SHOWN ON THAT CERTAIN PARCEL MAP FILED FOR RECORD ON DECEMBER 24, 2007, IN BOOK 24 OF PARCEL MAPS AT PAGE 155, OFFICIAL RECORDS OF SAN JOAQUIN COUNTY WAS TAKEN AS THE BASIS FOR ALL BEARINGS SHOWN HEREON.

NO.	BY	NO.	REVISION



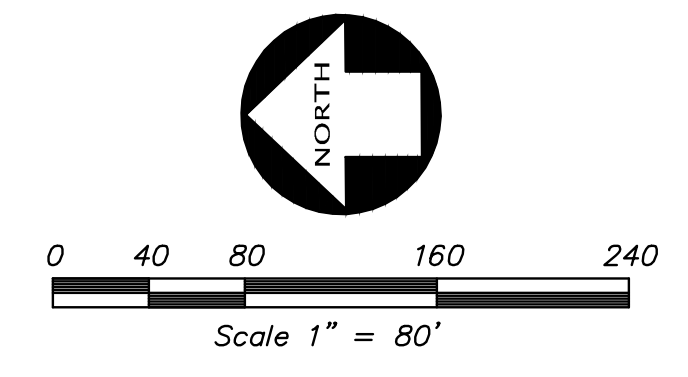
KIER+WRIGHT
2850 Collier Canyon Road
Livermore, California 94551
Phone (925) 245-9788
www.kierwright.com

CALIFORNIA
SAN JOAQUIN COUNTY,
PACIFIC GATEWAY
COVER SHEET AND KEY MAP
PRELIMINARY GRADING AND UTILITY PLANS
FOR

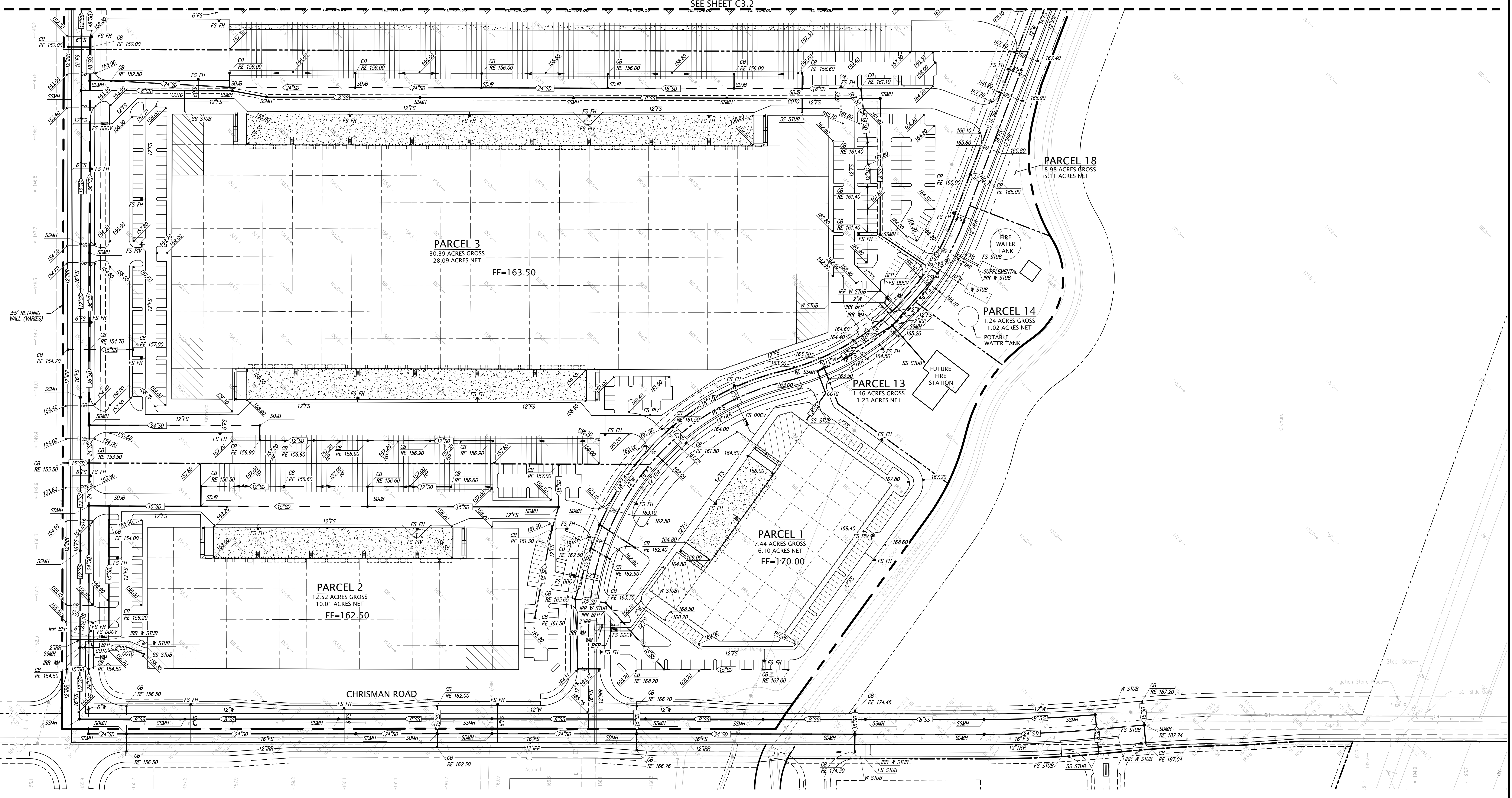
DATE	JANUARY, 2023
SCALE	AS SHOWN
DESIGNER	CR
DRAWN BY	VB
JOB NO.	A21619-5
SHEET	C1.0
OF	11 SHEETS



Know what's below.
Call before you dig.



SEE SHEET C3.2



BY		NO.		REVISION					
NO.	BY	NO.	BY	NO.	BY	NO.	BY	NO.	BY

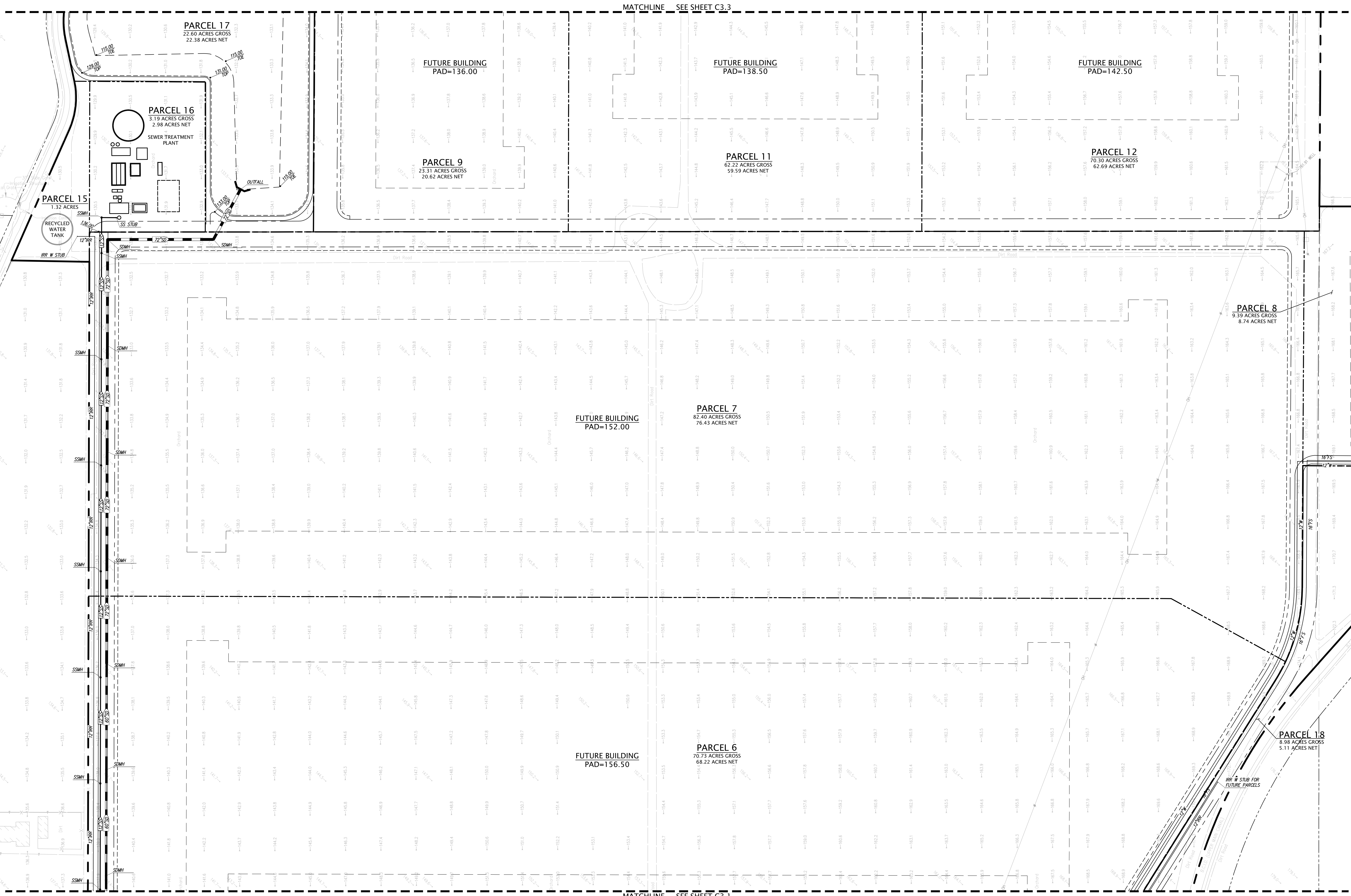
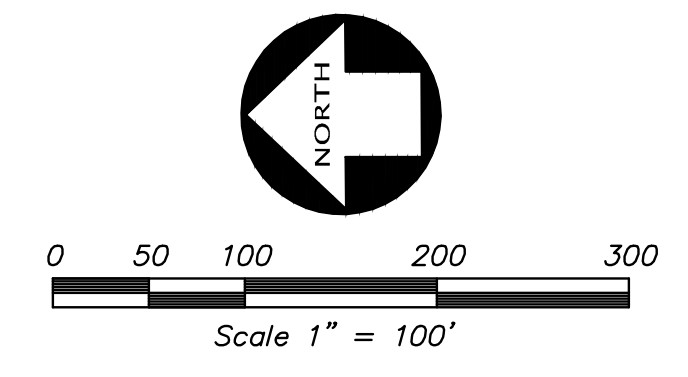
KIER+WRIGHT
 2850 Collier Canyon Road
 Livermore, California 94551
 Phone: (925) 245-8788
 www.kierwright.com

GRADING AND UTILITY PLAN
 PRELIMINARY GRADING AND UTILITY PLANS
 FOR
PACIFIC GATEWAY

SAN JOAQUIN COUNTY, CALIFORNIA

DATE	JANUARY, 2023
SCALE	AS SHOWN
DESIGNER	CR
DRAWN BY	VB
JOB NO.	A21619-5
SHEET	C3.0
OF	11 SHEETS

Z:\2023\A21619-5\DWG\UTILITIES\UTILITIES\UTILITY MAP\A21619-5-TM-CP-UP.dwg 1-12-23 01:50:48 PM auburo



Z:\2020\A21619-5\DWG\UTILITIES\REVITATIVE_MAPS\A21619-5-TM-CP-UP.dwg, 1-12-23, 01:51:26 PM, Smburg

DATE	JANUARY, 2023
SCALE	AS SHOWN
DESIGNER	CR
DRAWN BY	VB
JOB NO.	A21619-5
SHEET	C3.2
OF	11 SHEETS

NO.	BY	NO.	REVISION

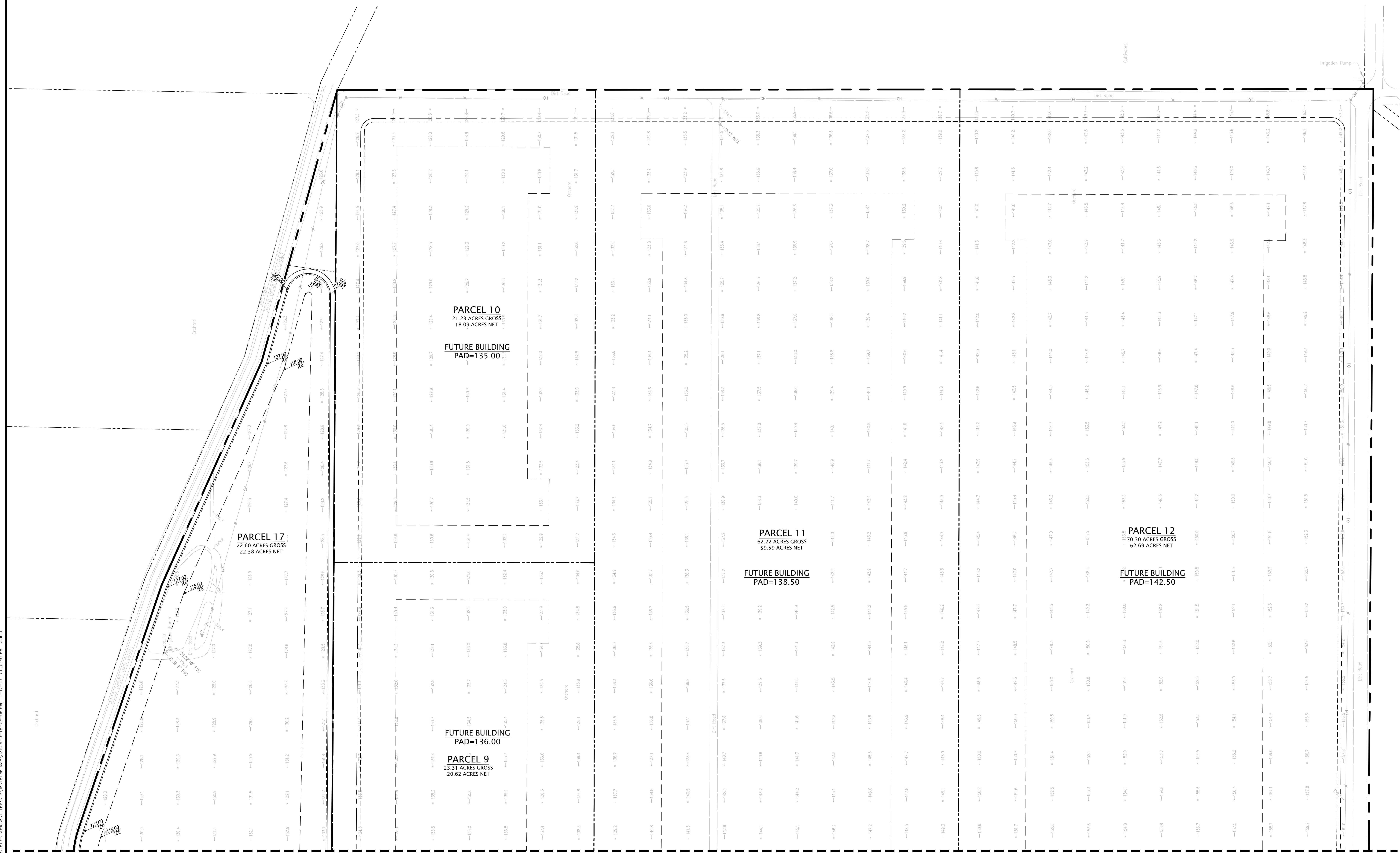
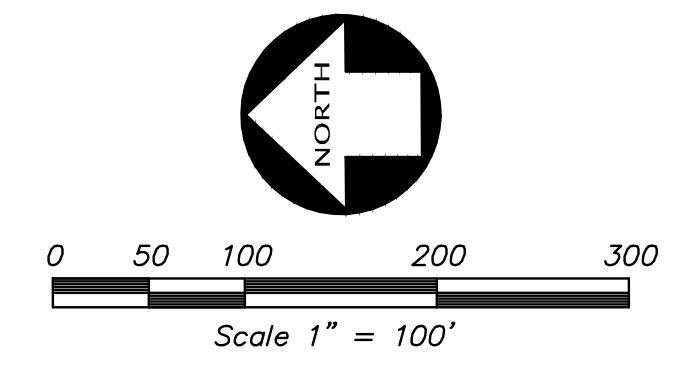
KIER+WRIGHT
 REGISTERED PROFESSIONAL ENGINEER
 No. 53447
 CIVIL
 STATE OF CALIFORNIA

2850 Collier Canyon Road
 Livermore, California 94551
 Phone (925) 245-8788
 www.kierwright.com

SAN JOAQUIN COUNTY, CALIFORNIA

**GRADING AND UTILITY PLAN
 PRELIMINARY GRADING AND UTILITY PLANS
 FOR
 PACIFIC GATEWAY**

Z:\2020\21618-3\WORK\UTILITIES\UTILITIES MAP\21618-5-TM-GP-UP.dwg 1-12-23 01:51:40 PM Sauris



DATE	JANUARY, 2023
SCALE	AS SHOWN
DESIGNER	CR
DRAWN BY	VB
JOB NO.	A21619-5
SHEET	C3.3
OF	11 SHEETS

GRADING AND UTILITY PLAN
PRELIMINARY GRADING AND UTILITY PLANS
 FOR
PACIFIC GATEWAY

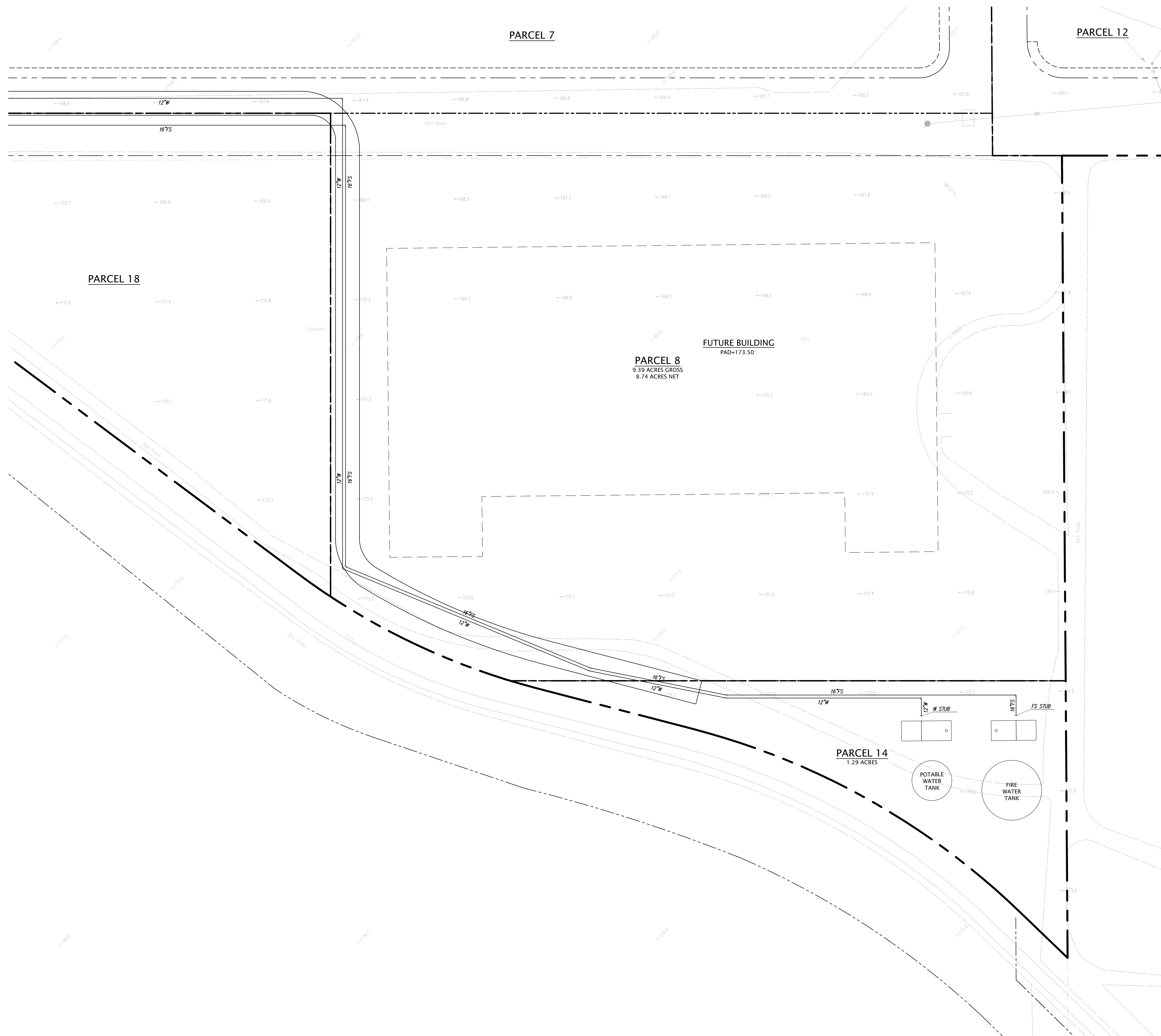
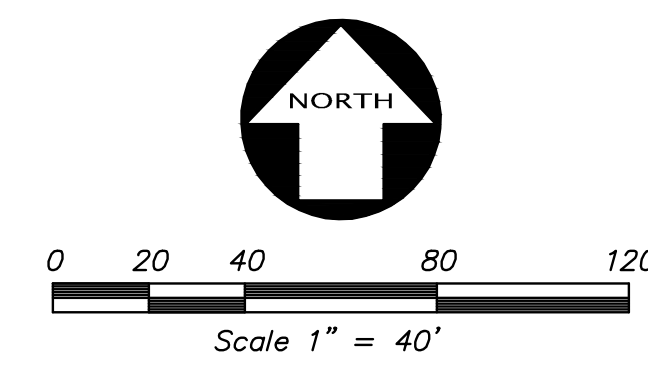
SAN JOAQUIN COUNTY, CALIFORNIA



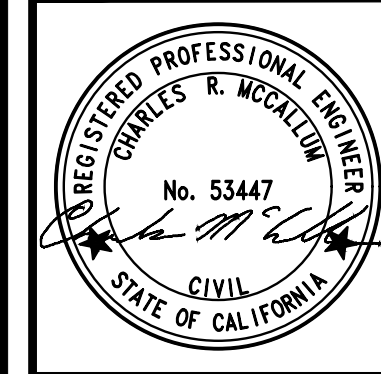
KIER+WRIGHT
 2850 Collier Canyon Road
 Livermore, California 94551
 Phone (925) 245-8788
 www.kierwright.com



NO.	REVISION	BY	NO.	REVISION



NO.	BY	REVISION

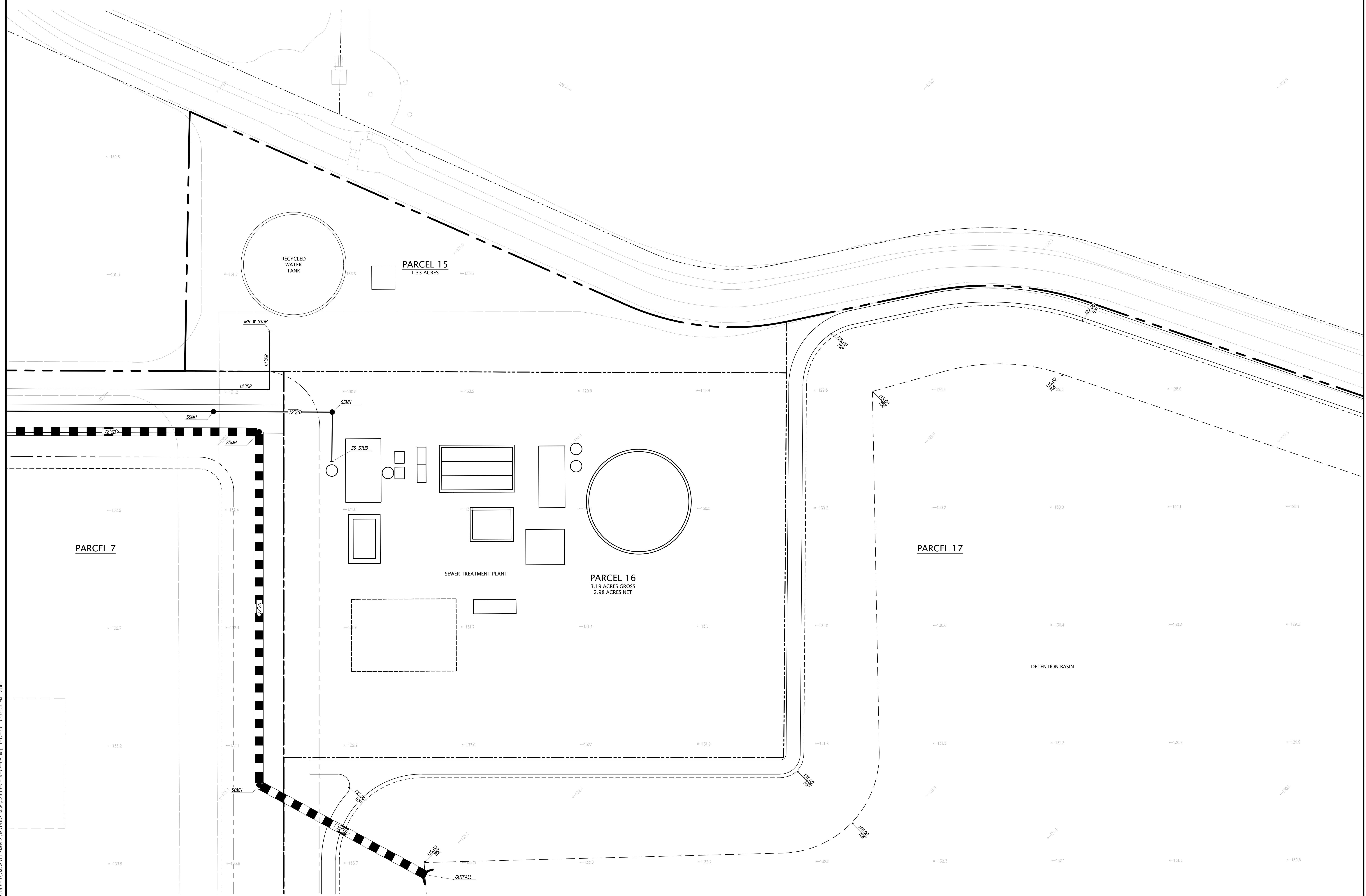
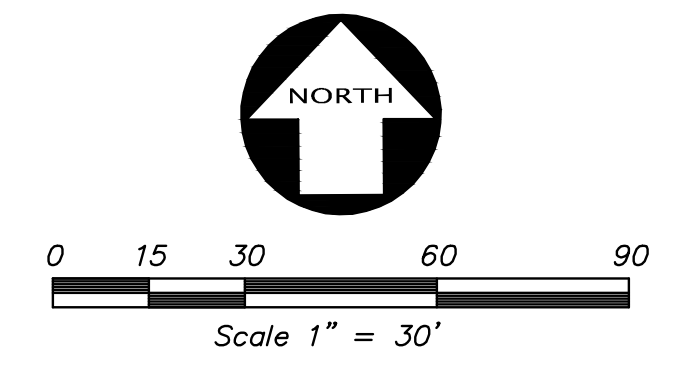


KIER+WRIGHT
 2850 Collier Canyon Road
 Livermore, California 94551
 Phone (925) 245-8788
 www.kierwright.com

**SECONDARY POTABLE WATER FACILITY
 PRELIMINARY GRADING AND UTILITY PLANS
 FOR
 PACIFIC GATEWAY**
 SAN JOAQUIN COUNTY, CALIFORNIA

DATE	JANUARY, 2023
SCALE	AS SHOWN
DESIGNER	CR
DRAWN BY	VB
JOB NO.	A21619-5
SHEET	C4.1
OF	11 SHEETS

Z:\2023\A21619-5\DWG\UTILITIES\TENTATIVE_MAPS\A21619-5-TM-C4-UP.dwg 1-12-23 01:52:11 PM sbanda



Z:\2023\A21619-5\DWG\UTILITIES\RELEVANT MAPS\A21619-5-TM-GP-UP.dwg, 1-12-23, 01:52:25 PM, aburda

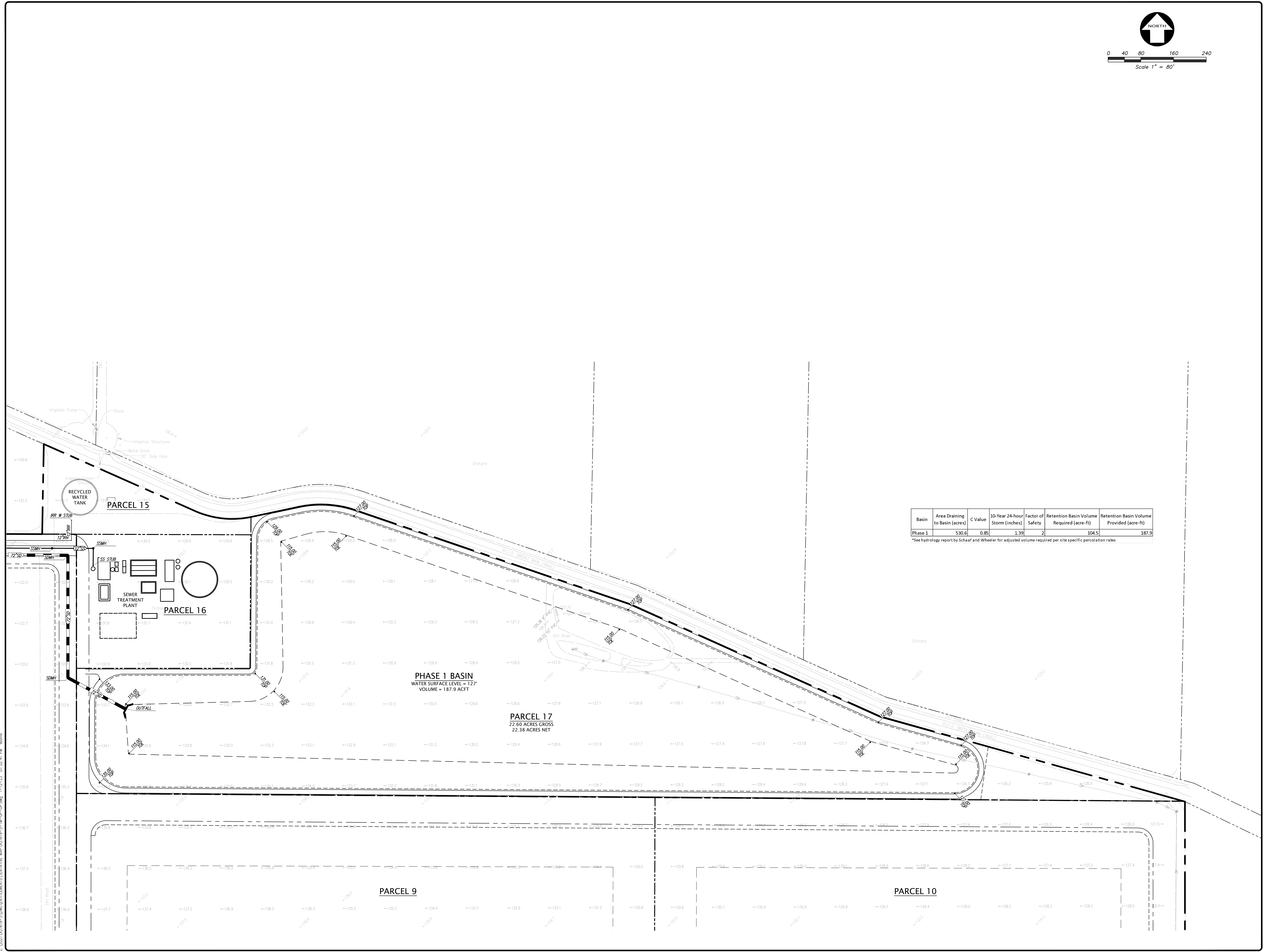
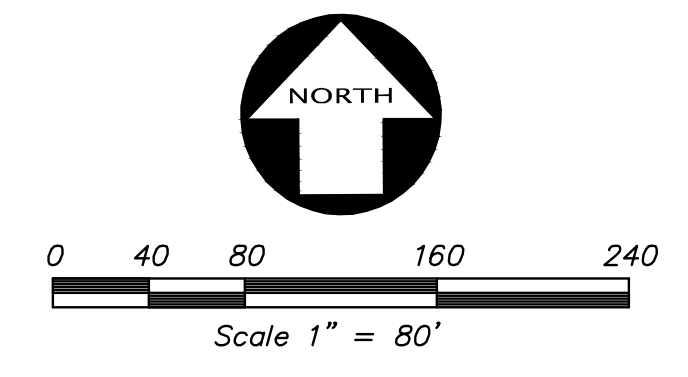
DATE	JANUARY, 2023
SCALE	AS SHOWN
DESIGNER	CR
DRAWN BY	VB
JOB NO.	A21619-5
SHEET	C4.2
OF	11 SHEETS

REVISION	NO.	BY

REGISTERED PROFESSIONAL ENGINEER
CORPUS R. WICKHAM
No. 53447
CIVIL
STATE OF CALIFORNIA

KIER+WRIGHT	2850 Collier Canyon Road Livermore, California 94551 Phone (925) 245-8788 www.kierwright.com
--------------------	---

RECYCLED WATER & SEWER TREATMENT FACILITIES PRELIMINARY GRADING AND UTILITY PLANS FOR PACIFIC GATEWAY	SAN JOAQUIN COUNTY, CALIFORNIA
--	-----------------------------------



Basin	Area Draining to Basin (acres)	C Value	10-Year 24-hour Storm (inches)	Factor of Safety	Retention Basin Volume Required (acre-ft)	Retention Basin Volume Provided (acre-ft)
Phase 1	530.6	0.85	1.39	2	104.5	187.9

*See hydrology report by Schaaf and Wheeler for adjusted volume required per site specific percolation rates

Z:\2023\A21619-5\DWG\UTILITIES\RETENTION BASIN\A21619-5-TM-GP-UP.dwg 1-12-23 01:52:41 PM sbanda

NO.	BY	NO.	BY	NO.	BY	NO.	BY
2850 Collier Canyon Road Livermore, California 94551 Phone (925) 245-8788 www.kierwright.com							
RETENTION BASIN PRELIMINARY GRADING AND UTILITY PLANS FOR PACIFIC GATEWAY							
SAN JOAQUIN COUNTY, CALIFORNIA							
DATE	JANUARY, 2023						
SCALE	AS SHOWN						
DESIGNER	CR						
DRAWN BY	VB						
JOB NO.	A21619-5						
SHEET	C4.3						
OF	11 SHEETS						