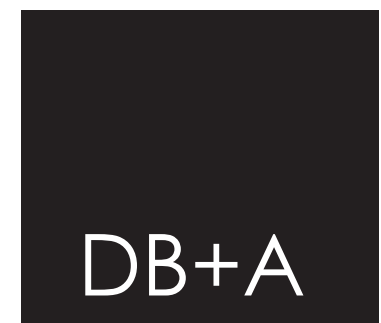


**Legend**

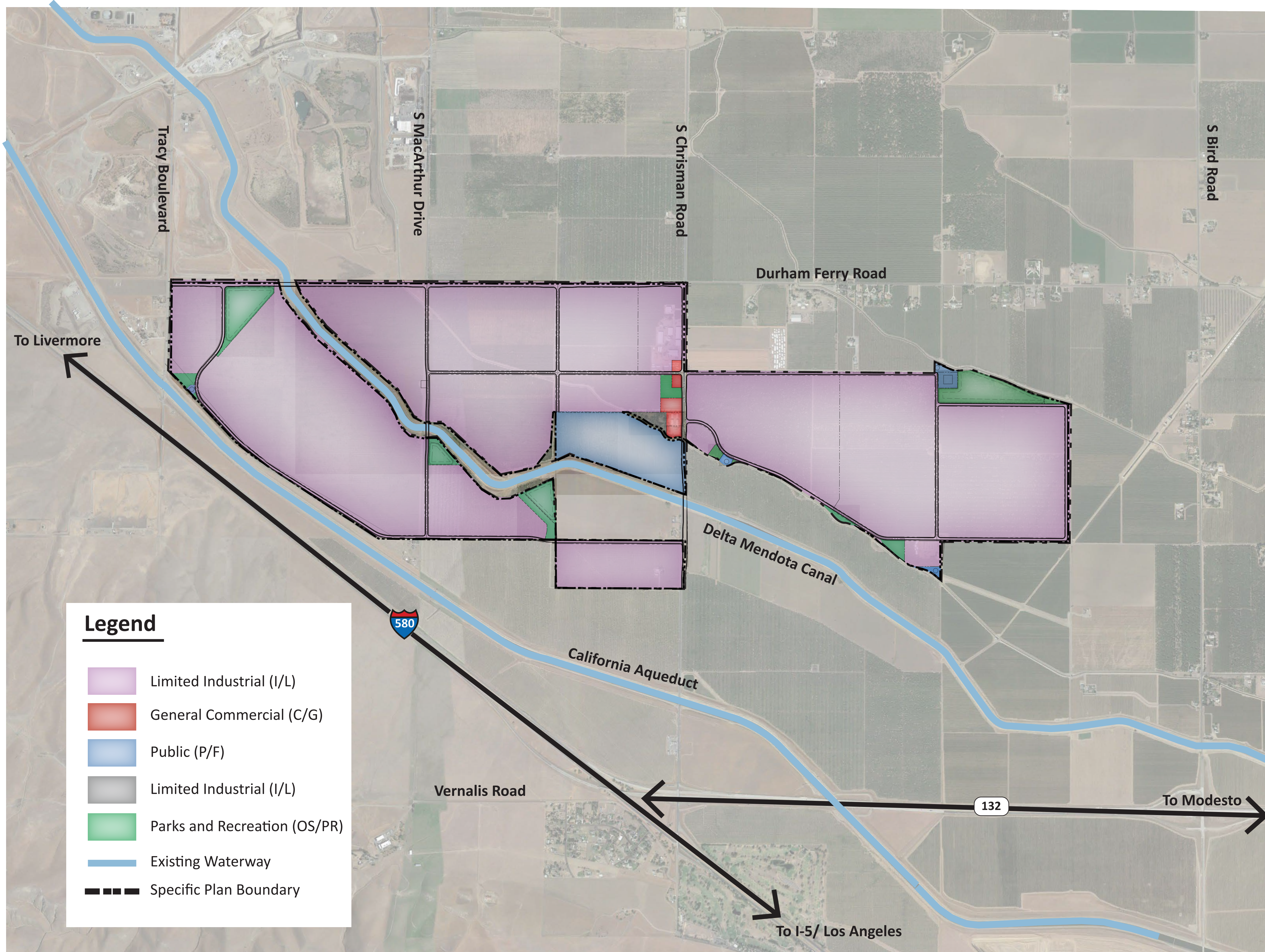
- General Agricultural (A/G)
- Resource Conservation (OS/RC)
- Existing Waterway
- Specific Plan Boundary

DBA # 2202



DAVID BABCOCK + ASSOCIATES  
ARCHITECTURE LANDSCAPE PLANNING  
3581 MT. DIABLO BLVD., SUITE 235  
LAFAYETTE, CALIFORNIA 94549  
T: 925.283.5070





**Legend**

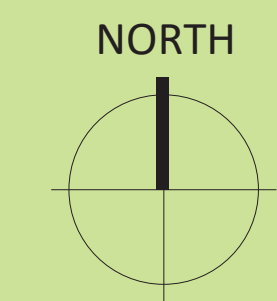
- Limited Industrial (I/L)
- General Commercial (C/G)
- Public (P/F)
- Limited Industrial (I/L)
- Parks and Recreation (OS/PR)
- Existing Waterway
- Specific Plan Boundary

DBA # 2202

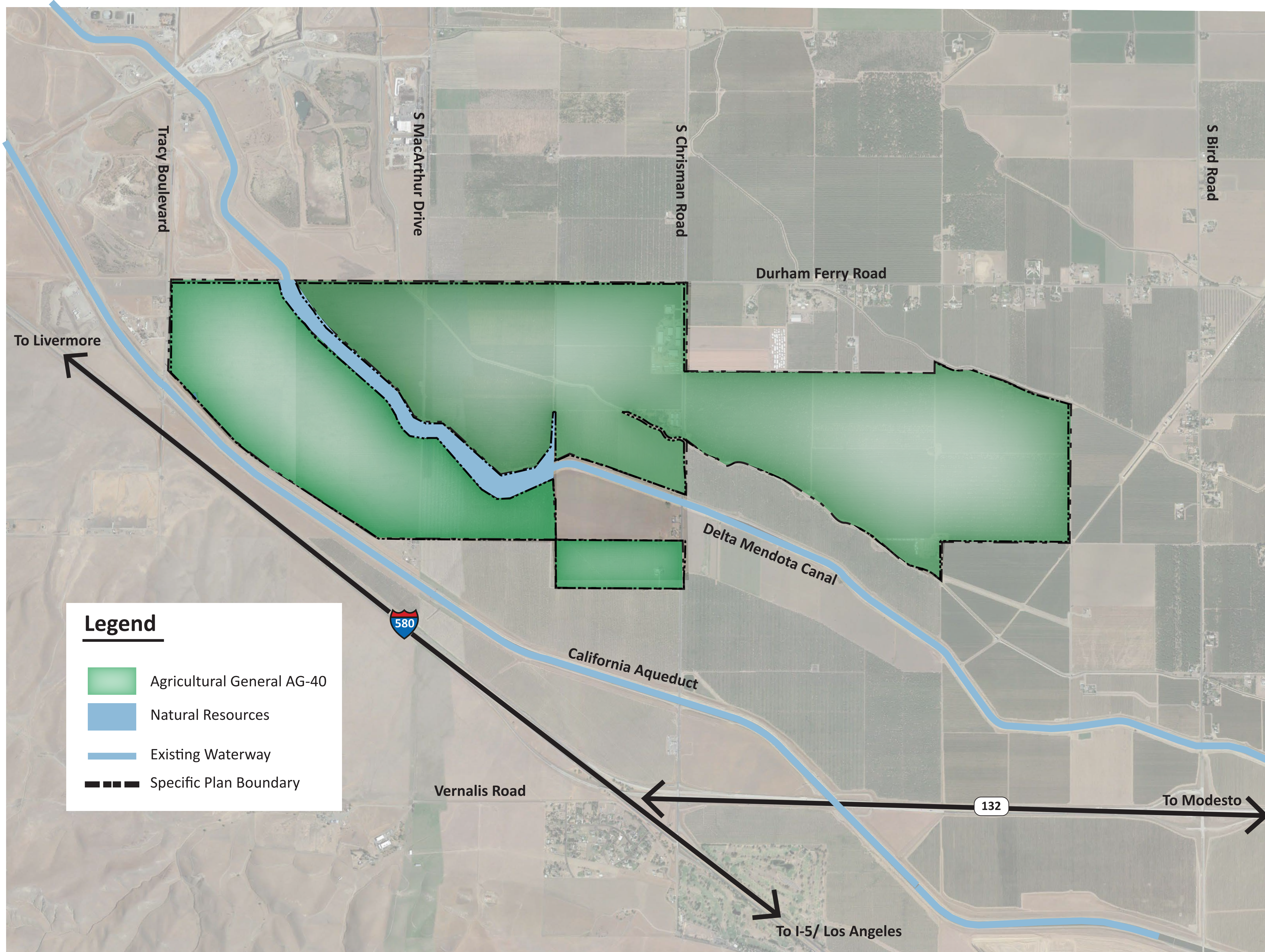


DAVID BABCOCK + ASSOCIATES  
ARCHITECTURE LANDSCAPE PLANNING  
3581 MT. DIABLO BLVD., SUITE 235  
LAFAYETTE, CALIFORNIA 94549  
T: 925.283.5070

NOT TO SCALE  
JANUARY 11, 2023







**Legend**

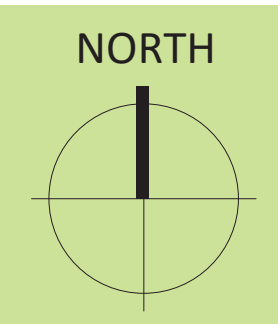
- Agricultural General AG-40
- Natural Resources
- Existing Waterway
- Specific Plan Boundary

DBA # 2202

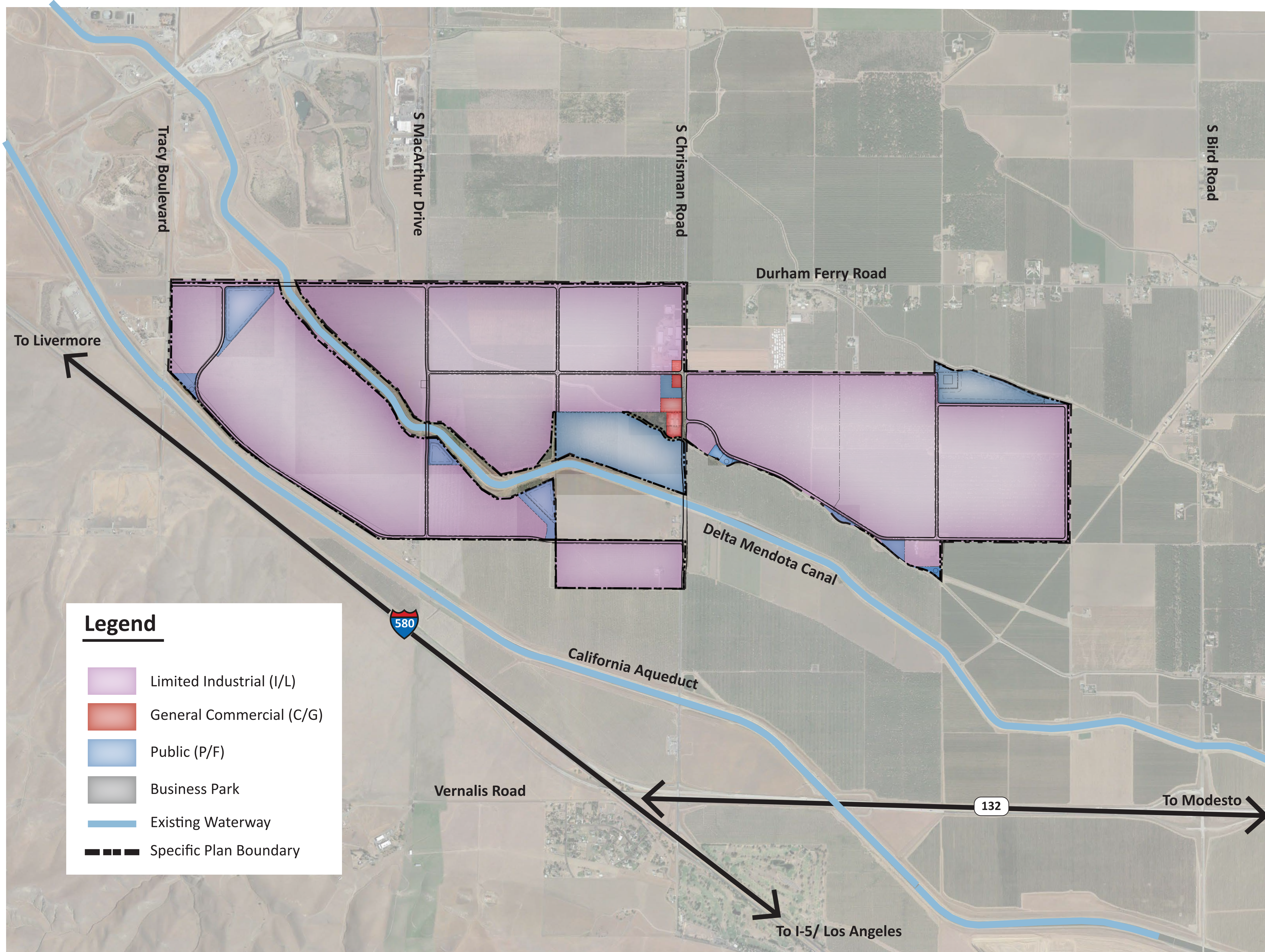


DAVID BABCOCK + ASSOCIATES  
ARCHITECTURE LANDSCAPE PLANNING  
3581 MT. DIABLO BLVD., SUITE 235  
LAFAYETTE, CALIFORNIA 94549  
T: 925.283.5070

NOT TO SCALE  
JANUARY 11, 2023



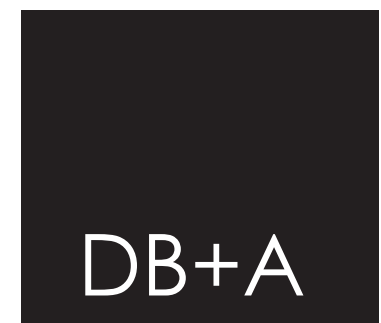




**Legend**

- Limited Industrial (I/L)
- General Commercial (C/G)
- Public (P/F)
- Business Park
- Existing Waterway
- Specific Plan Boundary

DBA # 2202



DAVID BABCOCK + ASSOCIATES  
ARCHITECTURE LANDSCAPE PLANNING  
3581 MT. DIABLO BLVD., SUITE 235  
LAFAYETTE, CALIFORNIA 94549  
T: 925.283.5070