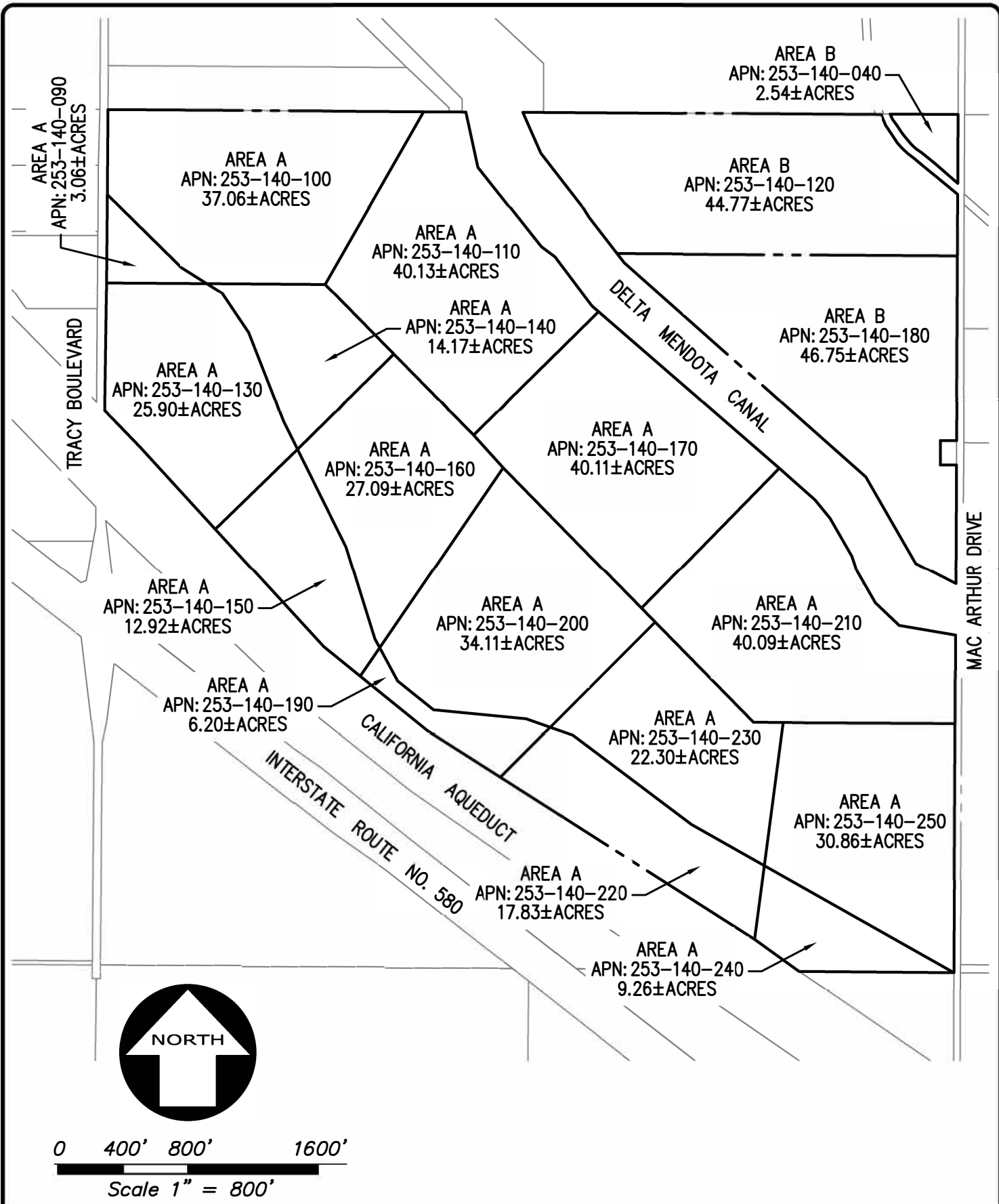


Pacific Gateway
Master APN & Property Owner List
(Acreages Rounded)
January 16, 2023

<u>District</u>	<u>Area</u>	<u>APN</u>	<u>Owner</u>	<u>ACREAGE</u>
West	A	253-140-009	Pinderjit S. Sandhu	3.06
West	A	253-140-010	Pinderjit S. Sandhu	37.06
West	A	253-140-011	Pinderjit S. Sandhu	40.13
West	A	253-140-013	Pinderjit S. Sandhu	25.9
West	A	253-140-014	Pinderjit S. Sandhu	14.17
West	A	253-140-015	Pinderjit S. Sandhu	12.92
West	A	253-140-016	Pinderjit S. Sandhu	27.09
West	A	253-140-017	Pinderjit S. Sandhu	40.11
West	A	253-140-019	Pinderjit S. Sandhu	6.2
West	A	253-140-020	Pinderjit S. Sandhu	34.11
West	A	253-140-021	Pinderjit S. Sandhu	40.09
West	A	253-140-022	Pinderjit S. Sandhu	17.83
West	A	253-140-023	Pinderjit S. Sandhu	22.3
West	A	253-140-024	Pinderjit S. Sandhu	9.26
West	A	253-140-025	Pinderjit S. Sandhu	30.86
West	A	253-190-021	Pinderjit S. Sandhu	39.91
West	A	253-190-022	Pinderjit S. Sandhu	<u>39.98</u>
		TOTAL		440.98
Central	B	253-140-004	Ramandeep K. Sandhu	2.54
Central	B	253-140-012	Ramandeep K. Sandhu	44.77
Central	B	253-140-018	Ramandeep K. Sandhu	46.75
Central	B	253-190-012	Amanjit Sandhu	39.4
Central	B	253-190-013	Amanjit Sandhu	39.81
Central	B	253-190-014	Amanjit Sandhu	38.92
Central	B	253-190-015	Amanjit Sandhu	39.78
Central	B	253-190-016	Amanjit Sandhu	37.84
Central	B	253-190-017	Pinderjit S. Sandhu	39.76
Central	B	253-190-018	Amanjit Sandhu	39.79
Central	B	253-190-019	Pinderjit S. Sandhu	37.94
Central	B	253-190-020	Pinderjit S. Sandhu	<u>50.26</u>
		TOTAL		457.56
University	C	253-190-005	Branden/Kaitlen Mendes	<u>7.65</u>
		TOTAL		7.65
University	D	253-190-004	Ramandeep K. Sandhu	<u>66.05</u>
		TOTAL		66.05
East	E	253-250-037	Karnail and Ranbir Sandu 2012 Trust	39.54
East	E	253-250-038	Karnail and Ranbir Sandu 2012 Trust	39.53
East	E	253-250-039	Karnail and Ranbir Sandu 2012 Trust	39.95
East	E	253-250-040	Karnail and Ranbir Sandu 2012 Trust	40
East	E	253-250-041	Karnail and Ranbir Sandu 2012 Trust	40
East	E	253-250-042	Karnail and Ranbir Sandu 2012 Trust	40
East	E	253-250-043	Karnail and Ranbir Sandu 2012 Trust	40
East	E	253-250-044	Karnail and Ranbir Sandu 2012 Trust	40.05
East	E	253-250-045	Karnail and Ranbir Sandu 2012 Trust	197.68
East	E	253-260-003	Karnail and Ranbir Sandu 2012 Trust	<u>13.05</u>
		TOTAL		529.8
West	F	253-180-020	Gurvinder Musafar	<u>60.03</u>
		TOTAL		60.03
OVERALL PROPERTY GRAND TOTAL				1,562.07



KIER+WRIGHT

250 Cherry Lane, Suite 107, 208
Manteca, CA 95337

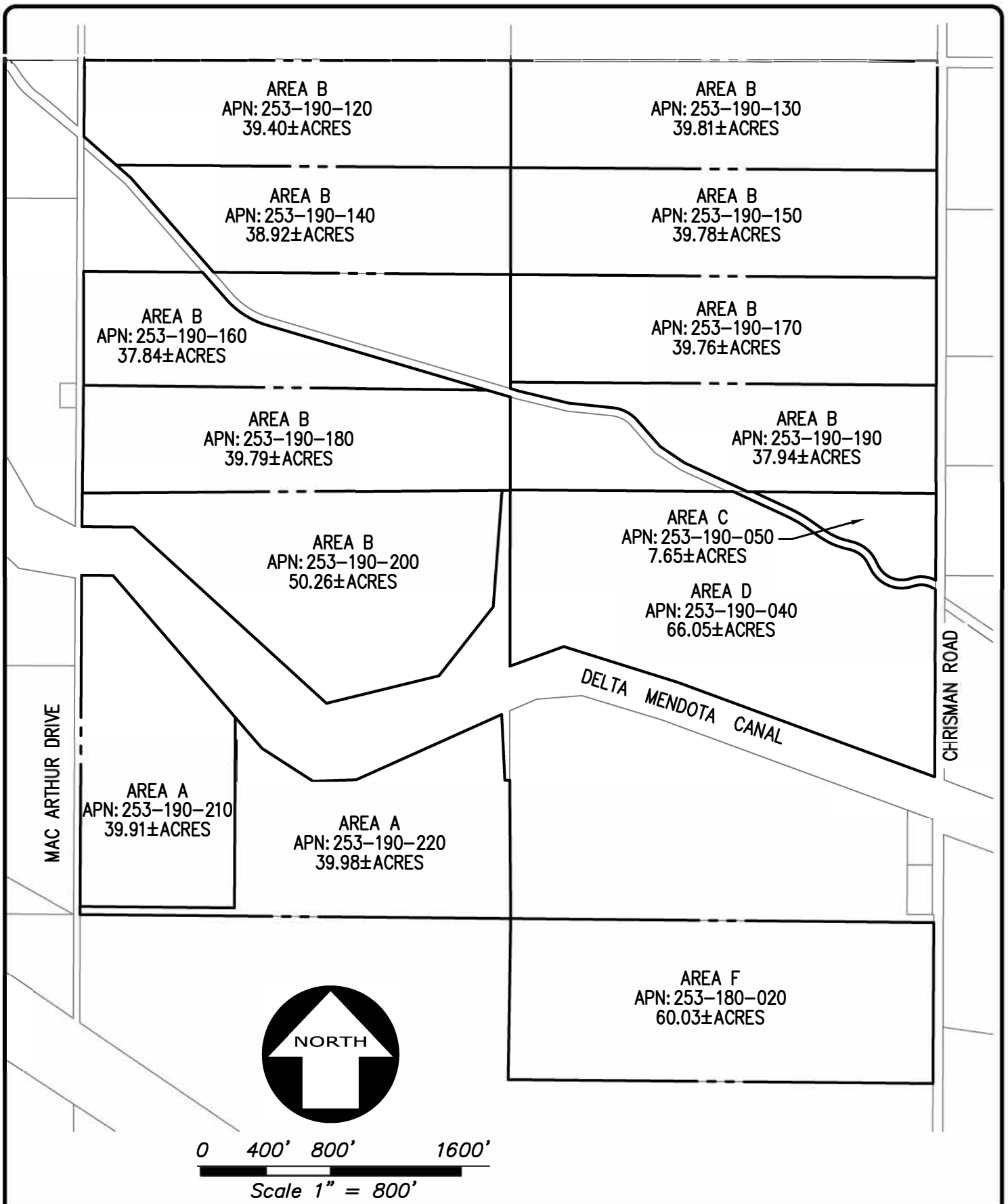
Phone: (209) 328-1123
www.kierwright.com

MASTER APN MAP
PACIFIC GATEWAY

TRACY

CALIFORNIA

DATE	JUNE 2, 2022
SCALE	1" = 800'
BY	JF
JOB NO.	A21619-1
SHEET	1 OF 3



KIER+WRIGHT

250 Cherry Lane, Suite 107, 208
Manteca, CA 95337

Phone: (209) 328-1123
www.kierwright.com

MASTER APN MAP
PACIFIC GATEWAY

TRACY

CALIFORNIA

DATE	JUNE 2, 2022
SCALE	1" = 800'
BY	JF
JOB NO.	A21619-1
SHEET	2 OF 3

CHRISMAN ROAD

DURHAM FERRY ROAD

AREA E
APN: 253-250-370
39.54±ACRES

AREA E
APN: 253-250-400
40.00±ACRES

AREA E
APN: 253-250-380
39.53±ACRES

AREA E
APN: 253-250-410
40.00±ACRES

AREA E
APN: 253-250-390
39.95±ACRES

AREA E
APN: 253-250-420
40.00±ACRES

AREA E
APN: 253-250-430
40.00±ACRES

AREA E
APN: 253-250-440
40.05±ACRES

AREA E
APN: 253-250-450
197.68±ACRES

DELTA MENDOTA CANAL

AREA E
APN: 253-260-030
13.05±ACRES



Scale 1" = 1200'



KIER+WRIGHT

250 Cherry Lane, Suite 107, 208
Manteca, CA 95337

Phone: (209) 328-1123
www.kierwright.com

MASTER APN MAP

PACIFIC GATEWAY

TRACY

CALIFORNIA

DATE	JUNE 2, 2022
SCALE	1" = 1200'
BY	JF
JOB NO.	A21619-1
SHEET	3 OF 3