

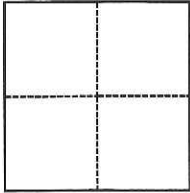
CORNER RECORD

Agency Index CR-17-241
Document Number _____

City of STOCKTON County of SAN JOAQUIN, California
Brief Legal Description North-West corner of lot 2 in block 9 according to vol.3 of M&P page 7

CORNER TYPE

COORDINATES (Optional)



- Government Corner Control
 Meander Property
 Rancho Other

N. _____ E. _____
 Elevation _____
 Units Metric U.S. Survey Foot
 Horizontal Datum _____
 Zone _____ Epoch Date _____
 Vertical Datum _____
 Complies with Public Resources Code §§8801-8819
 Complies with Public Resources Code §§8890-8902

Date of Survey August 4, 2010

PLS Act Ref.: 8765(d) 8771 8773 Other:
 Corner/
 Monument: Left as found Established Rebuilt Pre-Construction
 Found and tagged Reestablished Referenced Post-Construction

Narrative of corner identified and monument as found, set, reset, replaced, or removed:

See sheet #2 for description(s):

SURVEYOR'S STATEMENT

This Corner Record was prepared by me or under my direction in conformance with
the Professional Land Surveyors' Act on August 4, 2010

Signed [Signature] P.L.S. or R.C.E. No. PLS 8513



COUNTY SURVEYOR'S STATEMENT

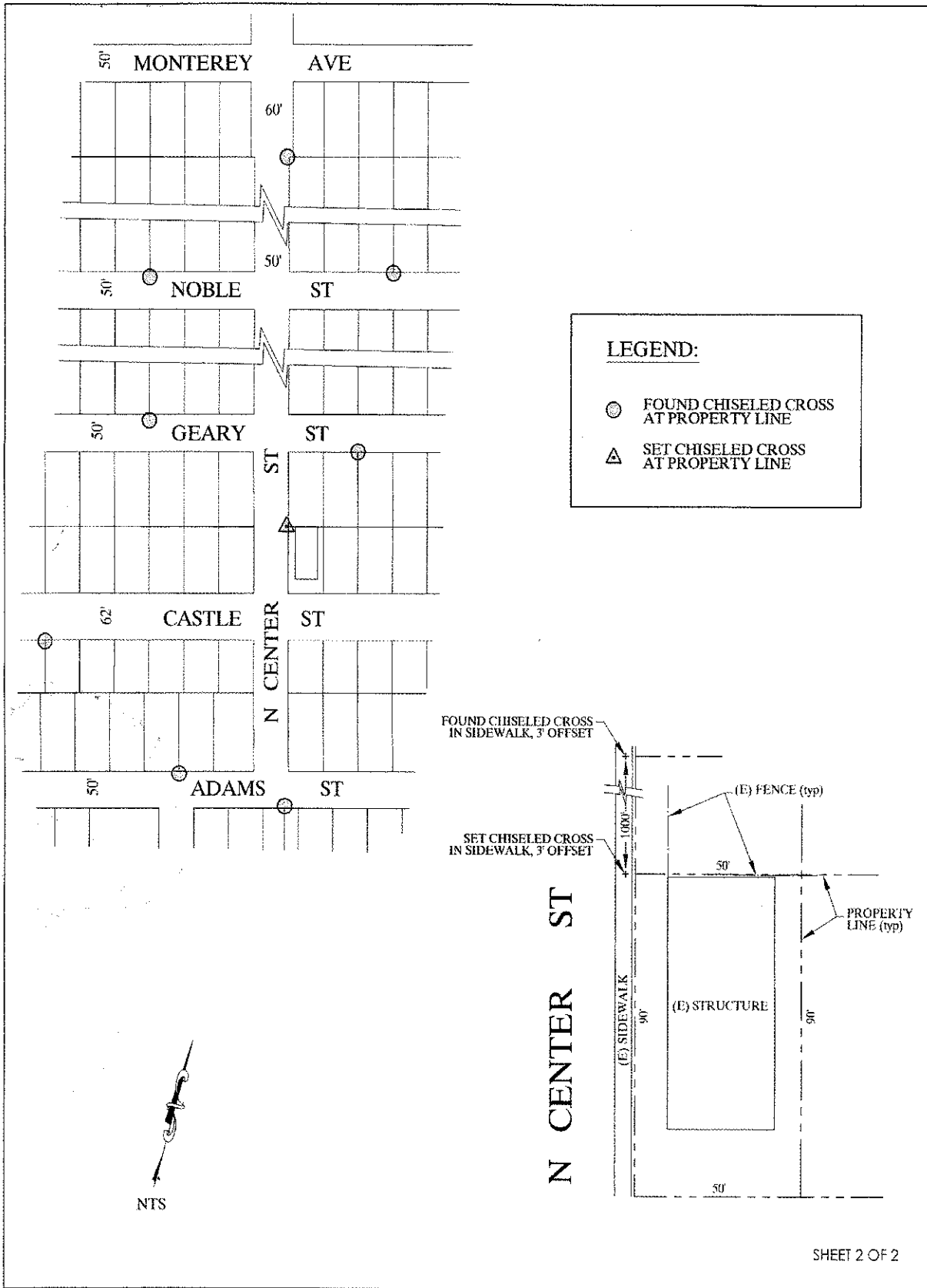
This Corner Record was received August 15, 2017
and examined and filed September 7, 2017

Signed Warren D. Smith P.L.S. or R.C.E. No. 4842

Title County Surveyor

County Surveyor's Comment





SHEET 2 OF 2