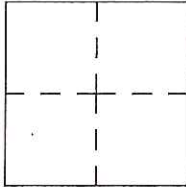


CORNER RECORD

Agency Index CR-17-222

Document Number _____

City of _____ County of San Joaquin, CaliforniaBrief Legal Description SEVENTH STREET @ ASH STREET
(Within Section 14, C.M. Weber Grant)**CORNER TYPE**Government Corner Control
Meander Property
Rancho Other Date of Survey July 28, 2017**COORDINATES (Optional)**

N. _____ E. _____

Elevation. _____

Units Metric U.S. Survey Foot

Horizontal Datum _____

Zone _____ Epoch Date _____

Vertical Datum _____

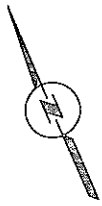
 Complies with Public Resources Code §§8801-8819 Complies with Public Resources Code §§8890-8902PLS Act Ref.: 8765(d) 8771 8773 Other:Corner/Monument: Left as found Established Rebuilt Pre-Construction Found and tagged Reestablished Referenced Post-Construction

Narrative of corner identified and monument as found, set, reset, replaced, or removed:

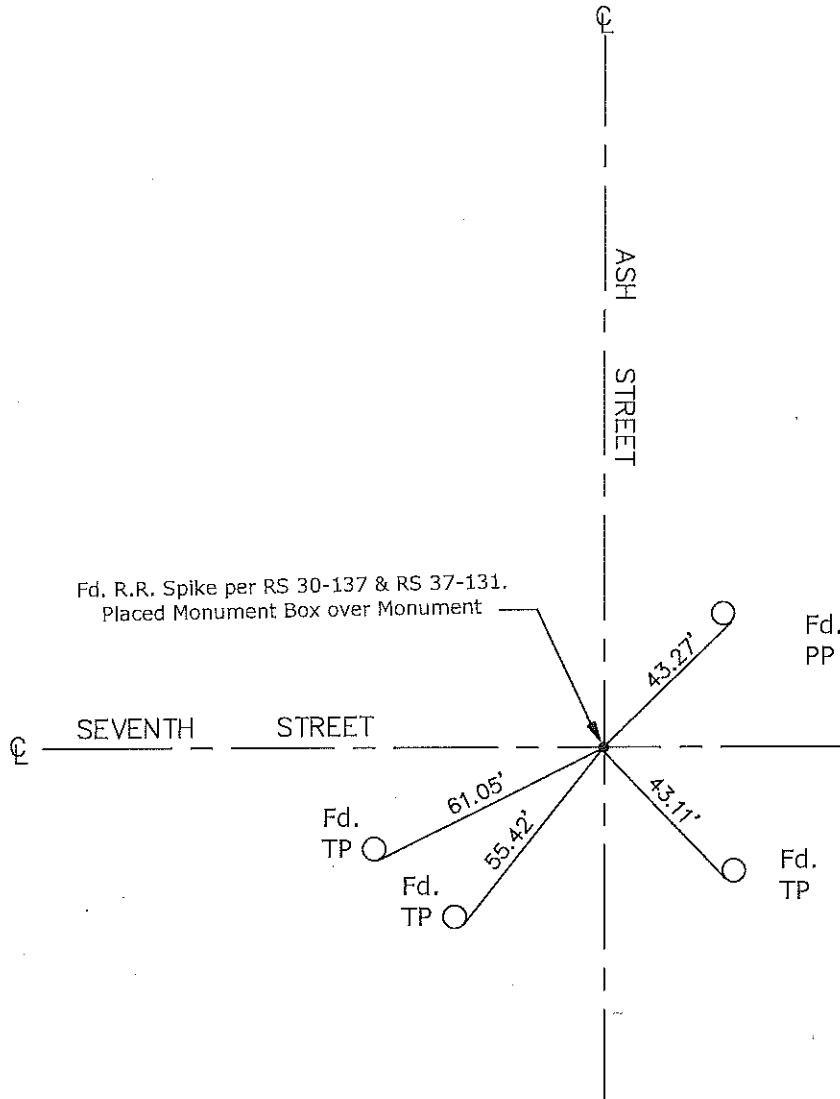
 See sheet #2 for description(s):**SURVEYOR'S STATEMENT**

This Corner Record was prepared by me or under my direction, in conformance with

the Professional Land Surveyor's Act on August 3, 2017Signed James E. Hart P.L.S. or R.C.E. No. 8657**COUNTY SURVEYOR'S STATEMENT**This Corner Record was received August 3, 2017and examined and filed August 11, 2017Signed Warren D. Smith P.L.S. or R.C.E. No. 4842Title County Surveyor**County Surveyor's Comment**



N.T.S.



CR=Corner Record
 FP=Fence Post
 JP=Joint Pole
 LP=Light Pole
 PP=Power Pole
 GP=Guy Pole
 SP=Service Pole
 TP=Telephone Pole
 S.F.N.=Searched Found Nothing
 N.T.S.=Not To Scale
 M&P=Maps & Plats
 PM=Parcel Map
 RS=Record of Survey
 FB=Field Book
 N=North
 DI=Drain Inlet
 TOC=Top of Curb

Set=Conc. Nail with Brass Washer Stamped
 "S.J. Co.", unless otherwise noted
 Fd.=Found Conc. Nail with Brass Washer Stamped
 "S.J. Co.", unless otherwise noted
 Note: Found Monuments are not tagged
 unless otherwise noted.

"No Attempt Was Made to Verify the Monument(s)"