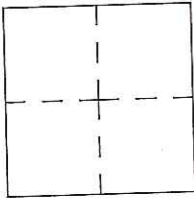


CORNER RECORD

Agency Index CR-17-199
Document Number _____

City of _____ County of San Joaquin, California

Brief Legal Description MCKINLEY AVENUE @ SIXTH STREET IN FRENCH CAMP
(Within Section 13, C.M. Weber Grant)



CORNER TYPE

Government Corner Control
Meander Property
Rancho Other

Date of Survey June 21, 2017

COORDINATES (Optional)

N. _____ E. _____

Elevation. _____

Units Metric U.S. Survey Foot

Horizontal Datum _____

Zone _____ Epoch Date _____

Vertical Datum _____

Complies with Public Resources Code §§8801-8819

Complies with Public Resources Code §§8890-8902

PLS Act Ref.: 8765(d) 8771 8773 Other:

Corner/
Monument: Left as found Established Rebuilt Pre-Construction
 Found and tagged Reestablished Referenced Post-Construction

Narrative of corner identified and monument as found, set, reset, replaced, or removed:
 See sheet #2 for description(s):

SURVEYOR'S STATEMENT

This Corner Record was prepared by me or under my direction in conformance with
the Professional Land Surveyor's Act on July 14, 2017

Signed James E. Hart P.L.S. or R.C.E. No. 8657



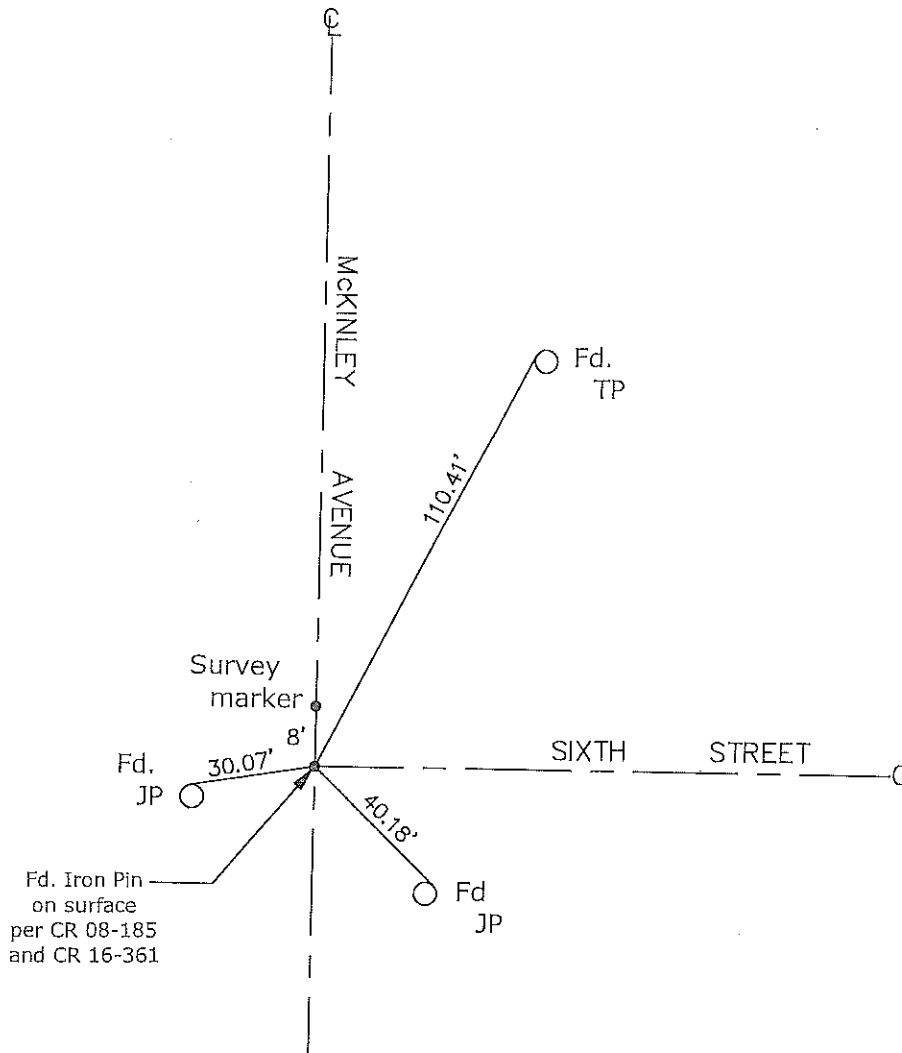
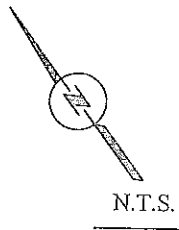
COUNTY SURVEYOR'S STATEMENT

This Corner Record was received July 24, 2017
and examined and filed August 8, 2017

Signed Warren D. Smith P.L.S. or R.C.E. No. 4842
Title County Surveyor

County Surveyor's Comment





- CR=Corner Record
- FP=Fence Post
- JP=Joint Pole
- LP=Light Pole
- PP=Power Pole
- GP=Guy Pole
- SP=Service Pole
- TP=Telephone Pole
- S.F.N.=Searched Found Nothing
- N.T.S.=Not To Scale
- M&P=Maps & Plats
- PM=Parcel Map
- RS=Record of Survey
- FB=Field Book
- N=North
- DI=Drain Inlet
- TOC=Top of Curb

Set=Conc. Nail with Brass Washer Stamped
 "S.J. Co.", unless otherwise noted
 Fd.=Found Conc. Nail with Brass Washer Stamped
 "S.J. Co.", unless otherwise noted
 Note: Found Monuments are not tagged
 unless otherwise noted.

"No Attempt Was Made to Verify the Monument(s)"